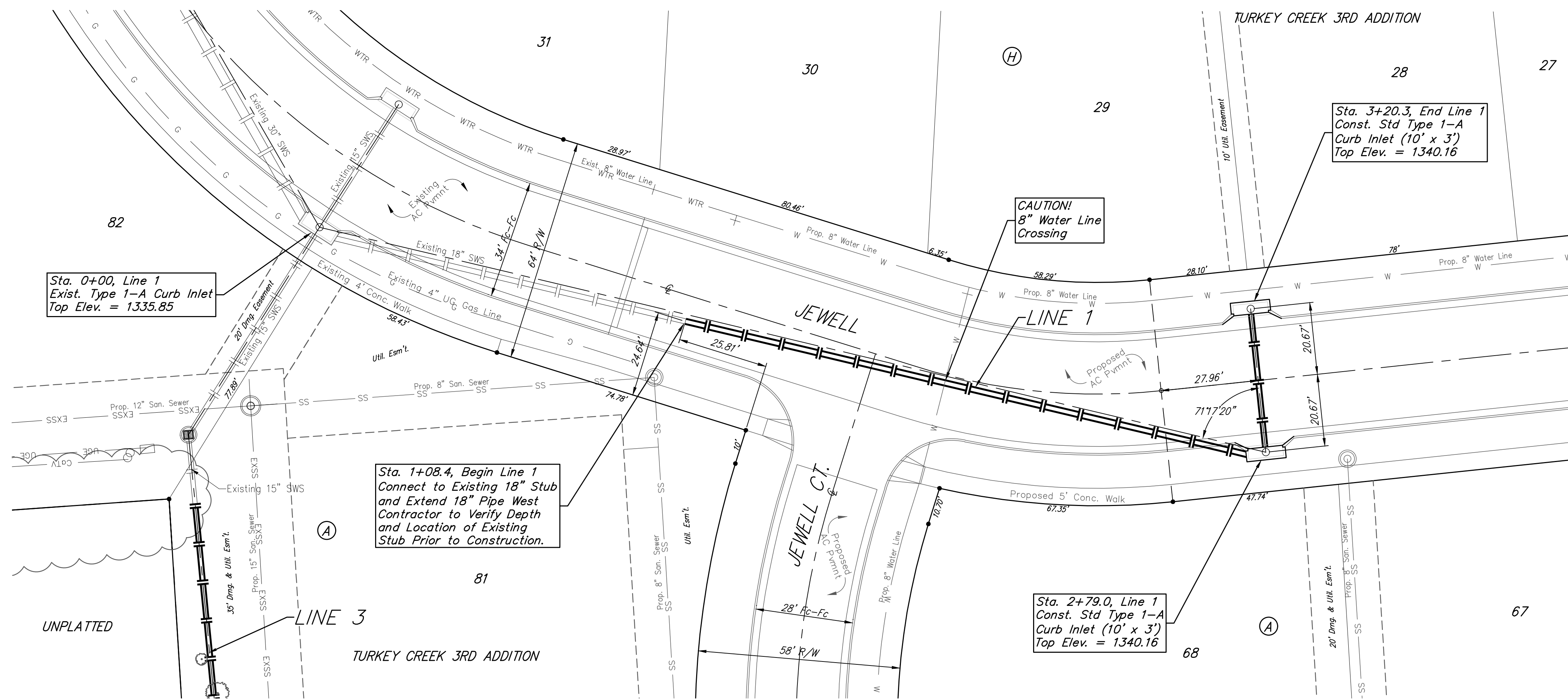


**BENCHMARKS:**

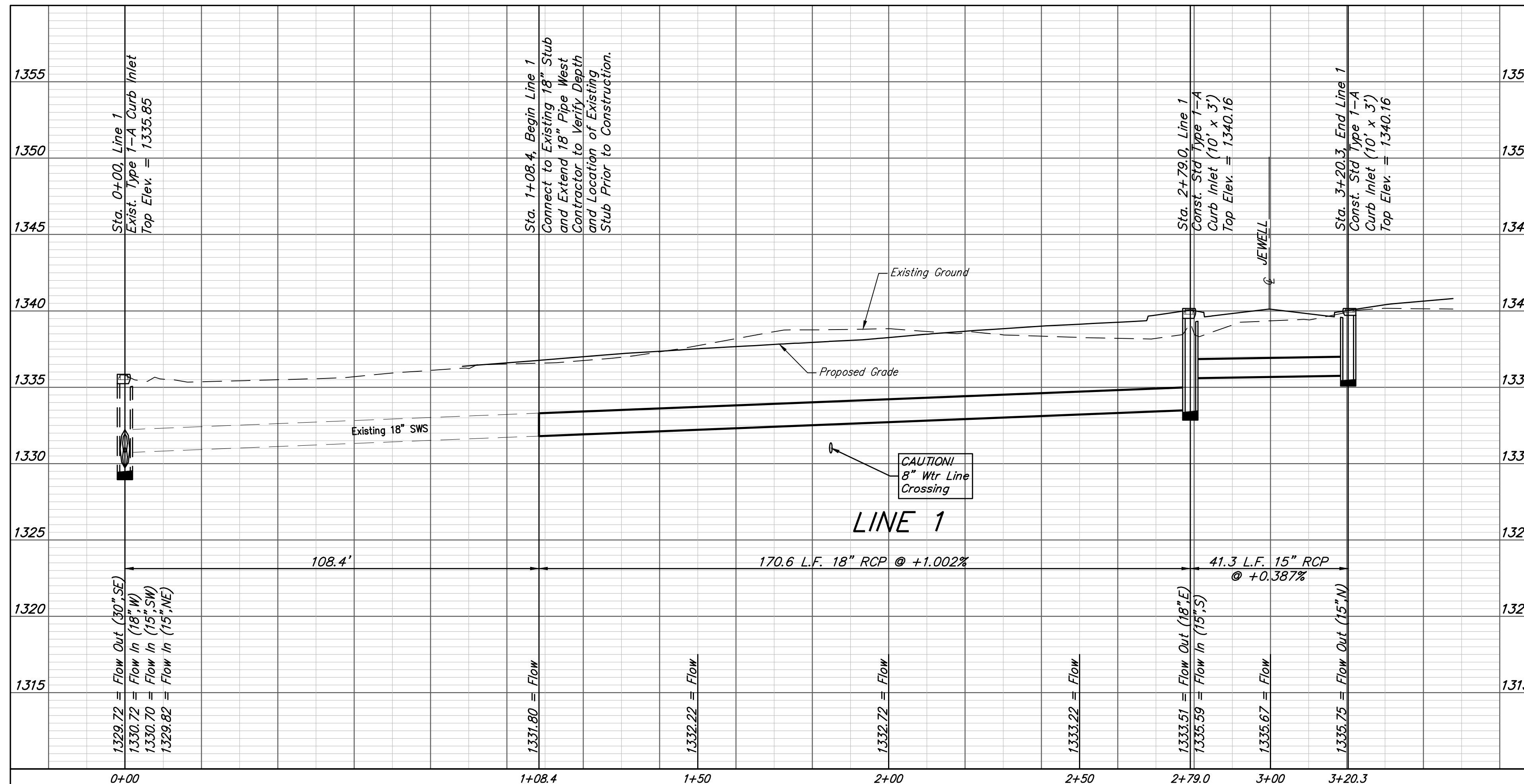
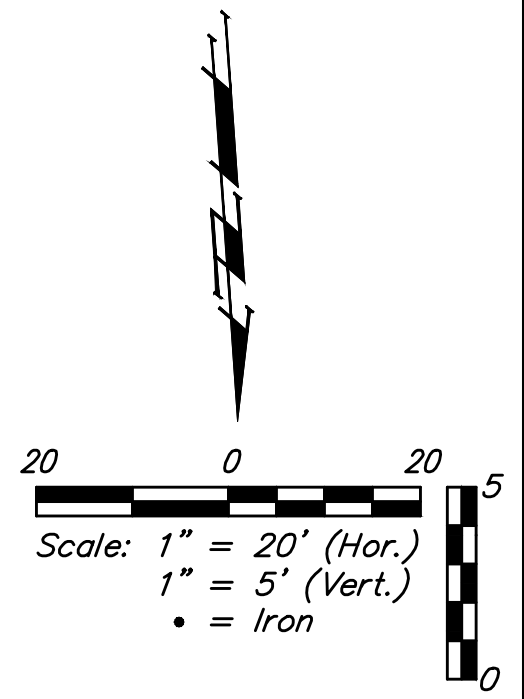
BM #1: "□" Cut in top of curb, south of SE corner of Lot 82, Block A, Turkey Creek 3rd Addition.  
Elev. = 1335.49 NGVD29

BM #2: "□" Cut on top of curb inlet, SW of the SE corner of Lot 81, Block A, Turkey Creek 3rd Addition.  
Elev. = 1335.95 NGVD29

BM #3: "□" Cut on top of yard inlet, 5' N & 43.5' E of the SE corner of Lot 28, Block H, Turkey Creek 3rd Addition.  
Elev. = 1335.95 NGVD29



The Contractor shall be required to backfill trench with sand from Sta. 1+08.4 to Sta. 3+20.3, Line 1. To be bid as "L.F. Fill, Sand, Flushed & Vibrated"



		Turkey Creek 3rd Addition - Phase 3B	
		<b>LINE 1</b>	
Storm Water Sewer Improvements		Baughman Company, P.A. 315 Ellis St. Wichita, KS 67211 P 316-262-7271 F 316-262-0149 ENGINEERING   SURVEYING   PLANNING   LANDSCAPE ARCHITECTURE	
PROJECT NUMBER 472-85232	DESIGN NBW	DRAWN JAK	DATE 4/25/18
REVISIONS:	SCALE Noted		
			<b>12 OF 31</b>