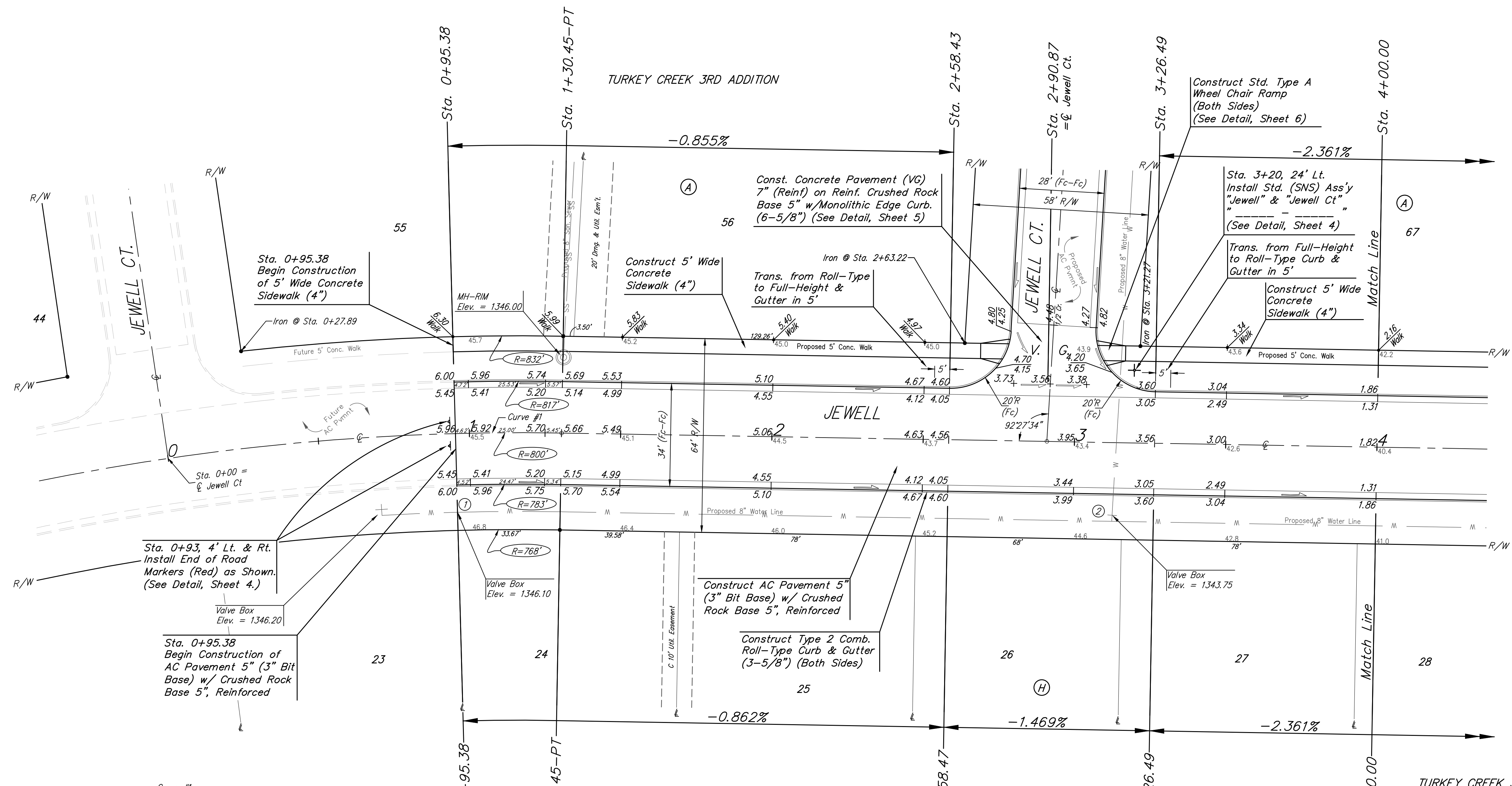
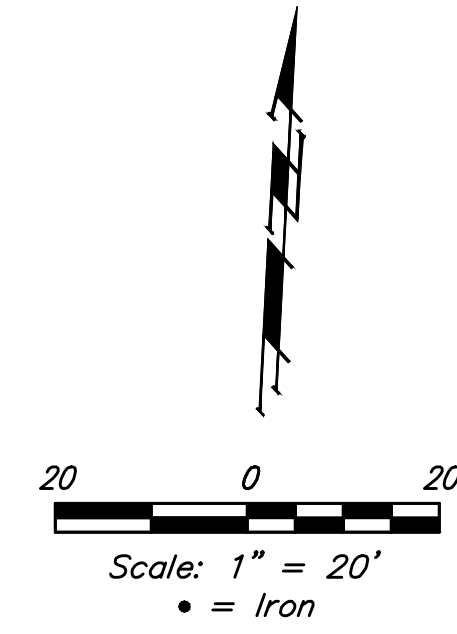


**BENCHMARKS:**

BM #1: "□" Cut in top of curb, south of SE corner of Lot 82, Block A, Turkey Creek 3rd Addition. Elev. = 1335.49 NGVD29

BM #2: "□" Cut on top of curb inlet, SW of the SE corner of Lot 81, Block A, Turkey Creek 3rd Addition. Elev. = 1335.95 NGVD29

BM #3: "□" Cut on top of yard inlet, 5' N & 43.5' E of the SE corner of Lot 28, Block H, Turkey Creek 3rd Addition. Elev. = 1335.95 NGVD29



Curve #1  
Curve Data Based on Centerline

Station	Arc	Face Chord Length		Defl.	Total Defl.
		8' Left	8' Right		
0+95.38	-	-	-	0'00'00"	0'00'00"
1+00.00	4.62'	4.76'	4.48'	0'09'56"	0'09'56"
1+25.00	25.00'	25.78'	24.22'	0'53'43"	1'03'39"
1+30.45	5.45'	5.62'	5.28'	0'11'43"	1'15'22"

VALVE LOCATION TABLE

VALVE NUMBER	BASELINE STATION	OFFSET DISTANCE	OFFSET DIRECTION
1	0+95.38	26'	Rt
2	3+12.89	24'	Rt
3	5+62.17	24'	Rt
4	6+58.27	26'	Rt

Roll type curb & gutter to be constructed on the pavement on this sheet. Top of curb elevation are given for full height curb.

		Turkey Creek 3rd Addition - Phase 3B	
		<b>JEWELL</b> Sta. 0+95.34 to Sta. 4+00	
Baughman Company, P.A. 315 Ellis St. Wichita, KS 67211 P 316-262-7271 F 316-262-0149 ENGINEERING   SURVEYING   PLANNING   LANDSCAPE ARCHITECTURE			
PROJECT NUMBER 472-85232	DESIGN NBW	DRAWN JAK	DATE 4/24/18
REVISIONS:	SCALE Noted SHEET		
			8 OF 31