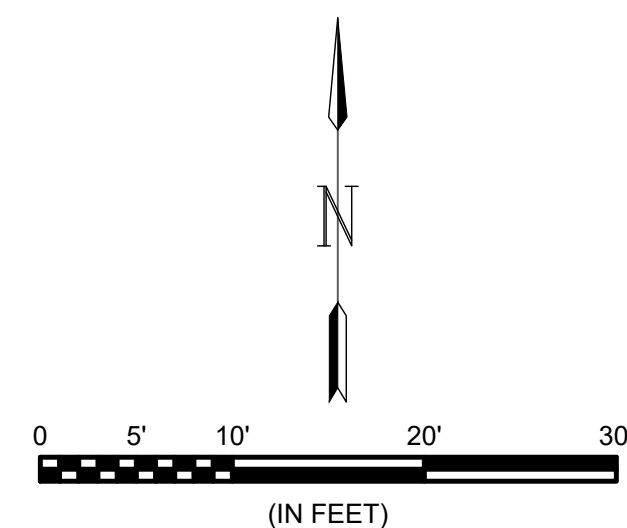




© 2018 GARVER, LLC
 THIS DOCUMENT, ALONG WITH THE IDEAS AND DESIGNS CONVEYED HEREIN, SHALL BE CONSIDERED INSTRUMENTS OF PROFESSIONAL SERVICE AND ARE PROPERTY OF GARVER, LLC. ANY USE, REPRODUCTION, OR DISTRIBUTION OF THIS DOCUMENT, ALONG WITH THE IDEAS AND DESIGN CONTAINED HEREIN, IS PROHIBITED UNLESS AUTHORIZED IN WRITING BY GARVER, LLC OR EXPLICITLY ALLOWED IN THE GOVERNING PROFESSIONAL SERVICES AGREEMENT FOR THIS WORK.

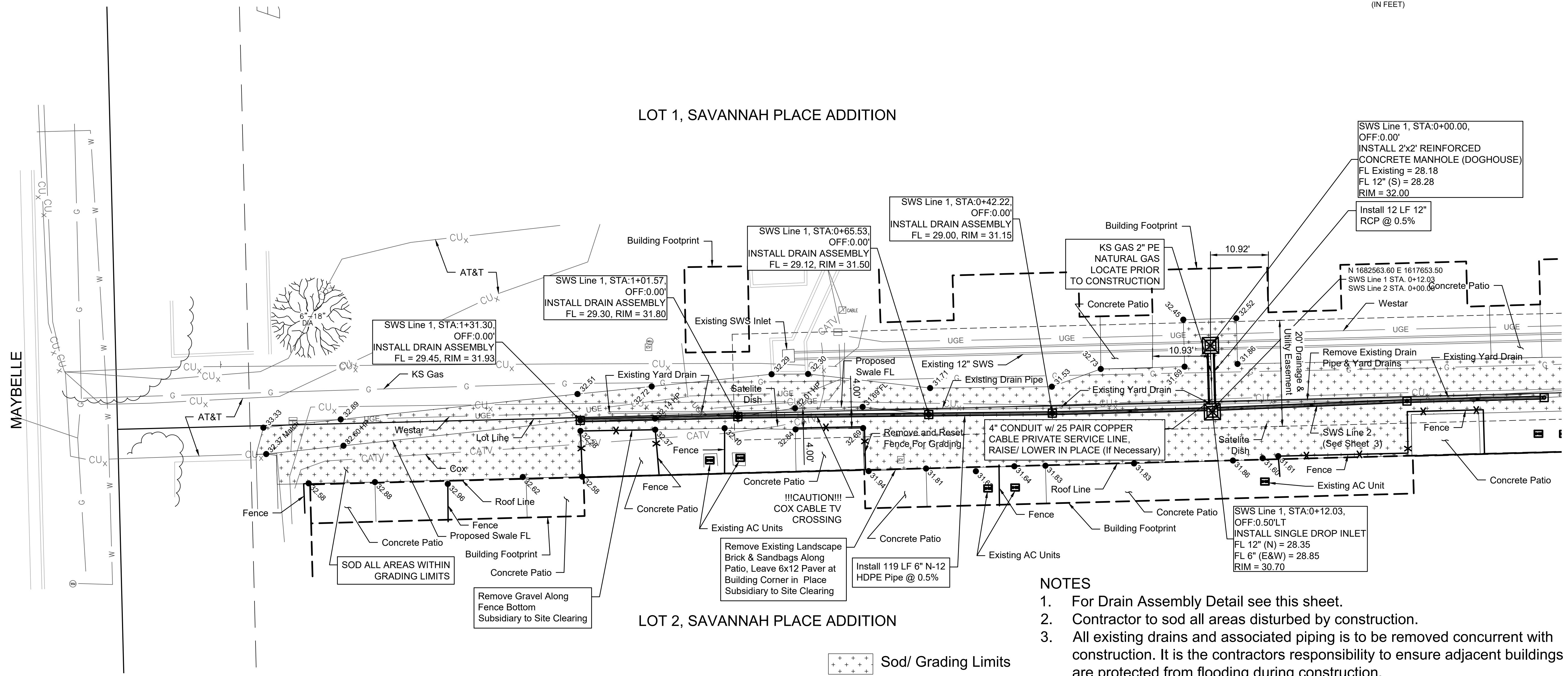


Digitally Signed 06/22/2018



LOT 1, SAVANNAH PLACE ADDITION

LOT 2, SAVANNAH PLACE ADDITION



MAYBELLE

SWS Line 1, STA:0+00.00, OFF:0.00'
 INSTALL 2'x2' REINFORCED CONCRETE MANHOLE (DOGHOUSE)
 FL Existing = 28.18
 FL 12" (S) = 28.28
 RIM = 32.00
 Install 12 LF 12" RCP @ 0.5%

SWS Line 1, STA:0+42.22, OFF:0.00'
 INSTALL DRAIN ASSEMBLY
 FL = 29.00, RIM = 31.15

SWS Line 1, STA:0+65.53, OFF:0.00'
 INSTALL DRAIN ASSEMBLY
 FL = 29.12, RIM = 31.50

SWS Line 1, STA:1+01.57, OFF:0.00'
 INSTALL DRAIN ASSEMBLY
 FL = 29.30, RIM = 31.80

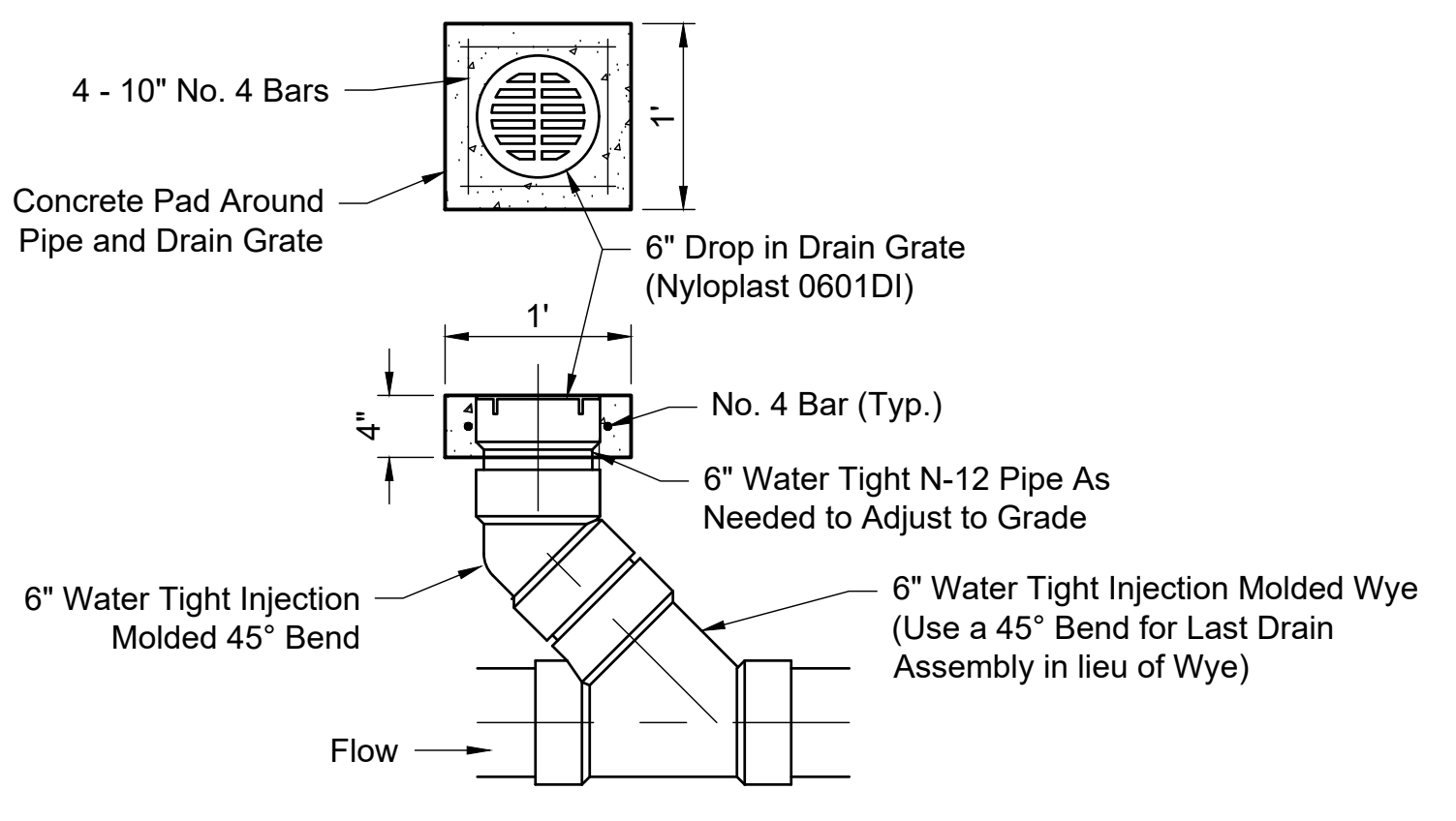
SWS Line 1, STA:1+31.30, OFF:0.00'
 INSTALL DRAIN ASSEMBLY
 FL = 29.45, RIM = 31.93

SWS Line 1, STA:0+12.03, OFF:0.50' LT
 INSTALL SINGLE DROP INLET
 FL 12" (N) = 28.35
 FL 6" (E&W) = 28.85
 RIM = 30.70

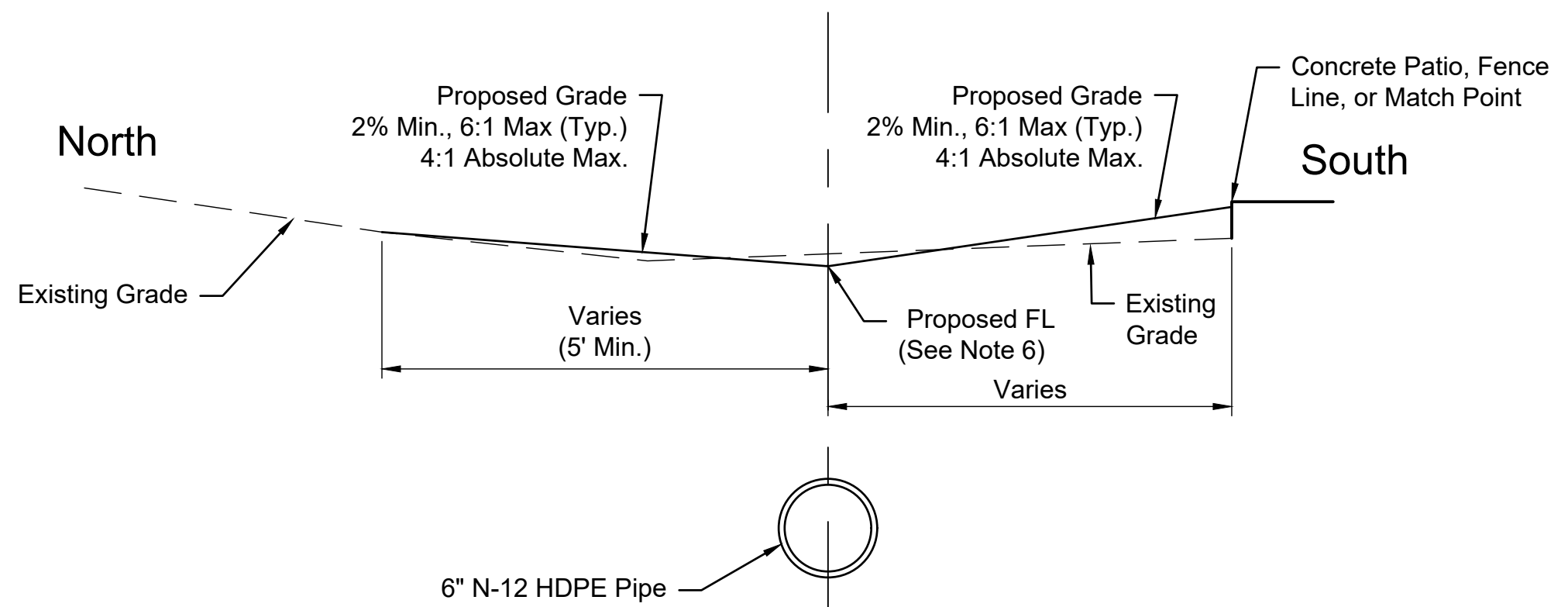
NOTES

1. For Drain Assembly Detail see this sheet.
2. Contractor to sod all areas disturbed by construction.
3. All existing drains and associated piping is to be removed concurrent with construction. It is the contractors responsibility to ensure adjacent buildings are protected from flooding during construction.
4. Contractor to restore all sprinkler systems disturbed by construction and adjust sprinkler heads to grade as needed. It is the contractors responsibility to document any existing sprinkler heads that are broken, un-operational or in disrepair prior to construction. (Subsidiary to Site Restoration)
5. All temporary spoil piles to be placed in areas where grading is to occur to minimize disruption to existing grades.
6. The flow line of the swale generally follows the proposed 6" pipe with the exception of Station 0+65 to 1+01
7. Contractor to expose the 2" PE gas line prior to construction. Contractor shall coordinate any potholing and raising/lowering of gas line with Adam Knolla of KS Gas, (316-832-3123). Contractor shall allow up to 3 days for raising/lowering of gas line by KS Gas (if necessary).
8. Contractor to expose the 25 pair copper cable in 4" conduit prior to construction and raise/lower in place (if necessary). This is a private service line owned by the property owner.

+++ Sod/ Grading Limits



DRAIN ASSEMBLY DETAIL



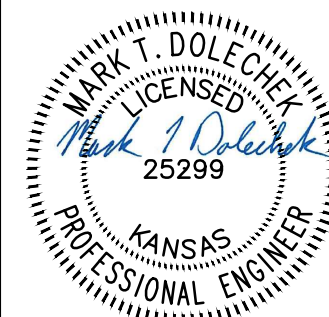
TYPICAL GRADING SECTION

File: L:\2018\18267010 - Savannah Place SWD\Drawings\C3D\Final Plans\SWS Plan.dwg Last Save: 6/15/2018 11:12 AM Last saved by: MTDolechek
 Last plotted by: Dolechek, Mark T. Plot Date: 6/22/2018 10:30 AM Plotter used: None

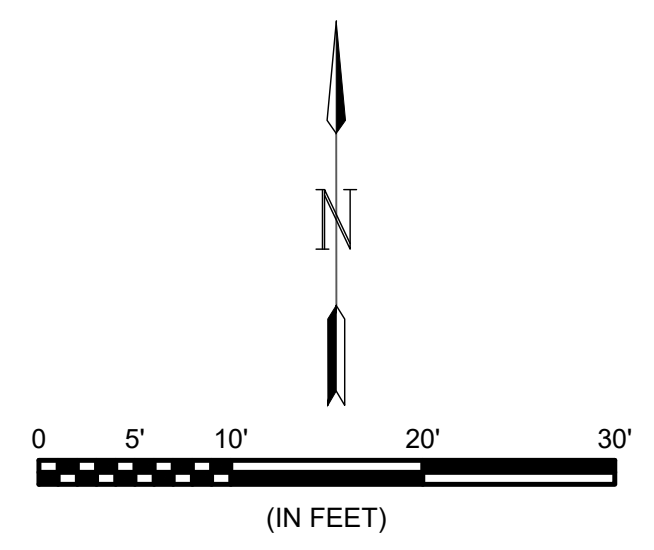
BY	
DESCRIPTION	
DATE	
REV.	
CITY OF WICHITA WICHITA, KANSAS	SAVANNAH PLACE SWS
SWS Line 1	
JOB NO.: 18267010 DATE: June 2018 DESIGNED BY: MTD DRAWN BY: MTD	
BAR IS ONE INCH ON ORIGINAL DRAWING IF NOT ONE INCH ON THIS SHEET, ADJUST SCALES ACCORDINGLY.	
DRAWING NUMBER	
SHEET NUMBER	2 OF 7



© 2018 GARVER, LLC
 THIS DOCUMENT, ALONG WITH THE IDEAS AND DESIGNS CONVEYED HEREIN, SHALL BE CONSIDERED INSTRUMENTS OF PROFESSIONAL SERVICE AND ARE PROPERTY OF GARVER, LLC. ANY USE, REPRODUCTION, OR DISTRIBUTION OF THIS DOCUMENT, ALONG WITH THE IDEAS AND DESIGN CONTAINED HEREIN, IS PROHIBITED UNLESS AUTHORIZED IN WRITING BY GARVER, LLC OR EXPLICITLY ALLOWED IN THE GOVERNING PROFESSIONAL SERVICES AGREEMENT FOR THIS WORK.

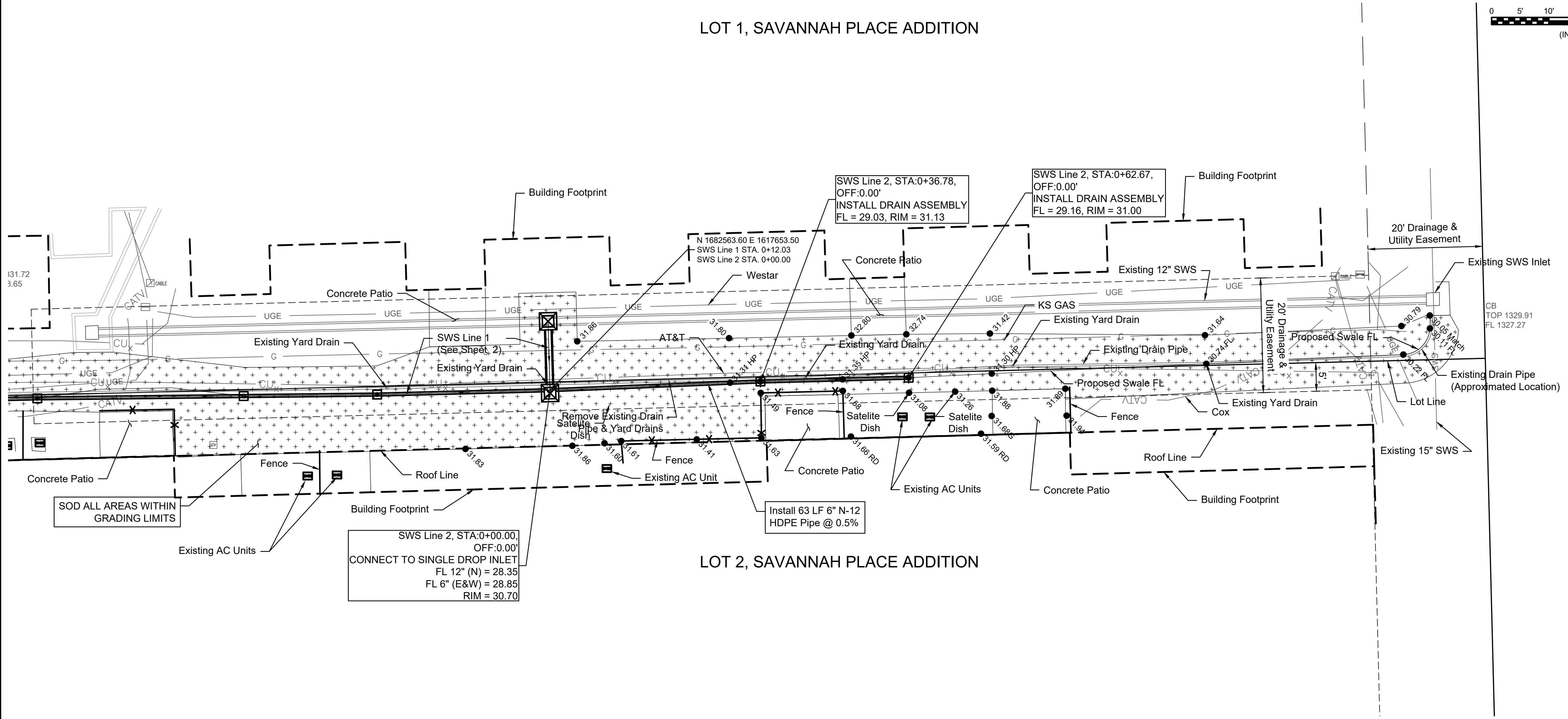


Digitally Signed 06/22/2018



LOT 1, SAVANNAH PLACE ADDITION

LOT 2, SAVANNAH PLACE ADDITION



Sod/ Grading Limits

NOTES

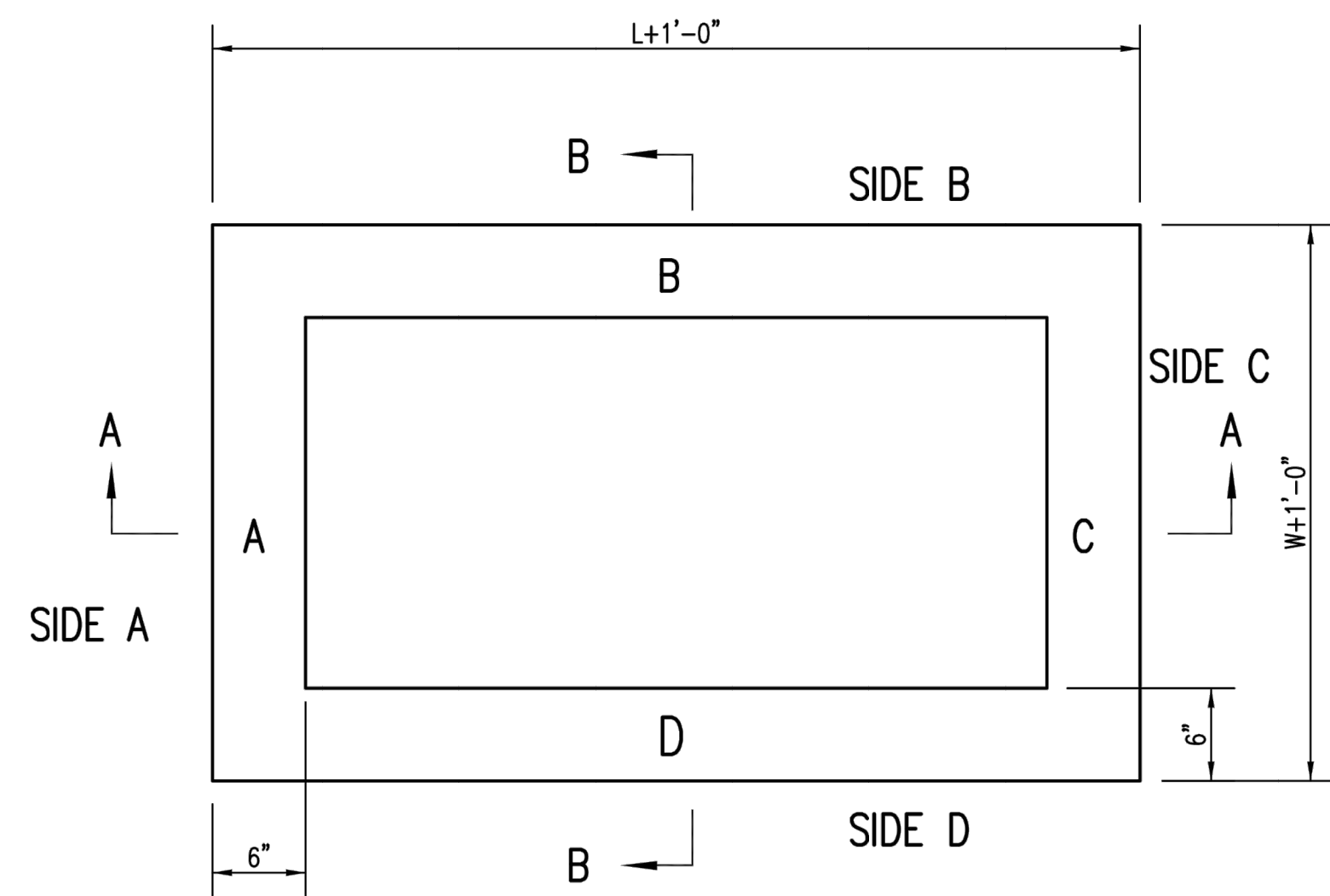
1. For Drain Assembly Detail see Sheet 2.
2. Contractor to sod all areas disturbed by construction.
3. All existing drains and associated piping is to be removed concurrent with construction. It is the contractors responsibility to ensure adjacent buildings are protected from flooding during construction.
4. Contractor to restore all sprinkler systems disturbed by construction and adjust sprinkler heads to grade as needed. It is the contractors responsibility to document any existing sprinkler heads that are broken, un-operational or in disrepair prior to construction. (Subsidiary to Site Restoration)
5. All temporary spoil piles to be placed in areas where grading is to occur to minimize disruption to existing grades.
6. The flow line of the swale generally follows the proposed 6" pipe with the exception of Station 0+65 to 1+01. For grading typical section see detail Sheet 2.

File: L:\2018\18267010 - Savannah Place SWD\Drawings\C3D\Final Plans\SWS Plan.dwg Last Save: 6/15/2018 11:12 AM Last saved by: MTDolechek
 Last plotted by: Dolechek, Mark T. Plot Date: 6/22/2018 10:30 AM Plotter used: None Plot Scale: 1:2.5849 Plot Date: 6/22/2018 10:30 AM

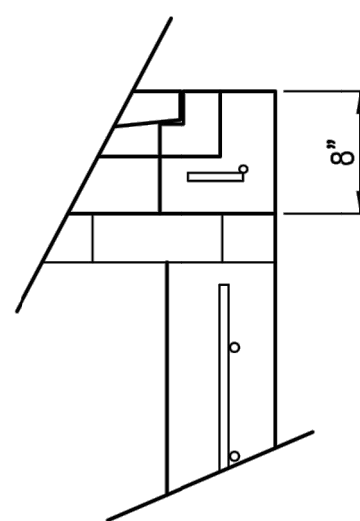
REV.	DATE	DESCRIPTION	BY

CITY OF WICHITA
 WICHITA, KANSAS
 SAVANNAH PLACE SWS

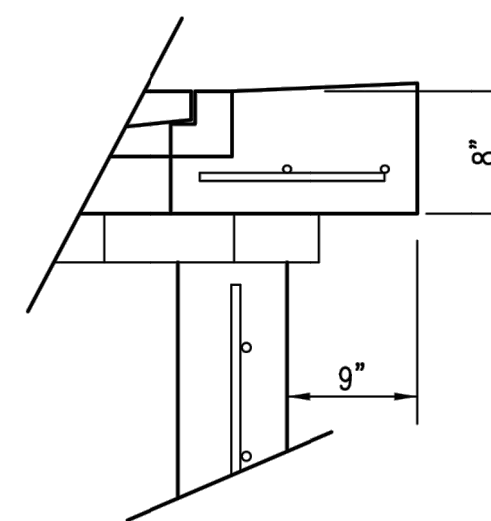
SWS Line 2
JOB NO.: 18267010 DATE: June 2018 DESIGNED BY: MTD DRAWN BY: MTD
BAR IS ONE INCH ON ORIGINAL DRAWING 0" = 1" (NOT ONE INCH ON THIS SHEET, ADJUST SCALES ACCORDINGLY.)
DRAWING NUMBER
SHEET NUMBER 3 OF 7



TOP VIEW

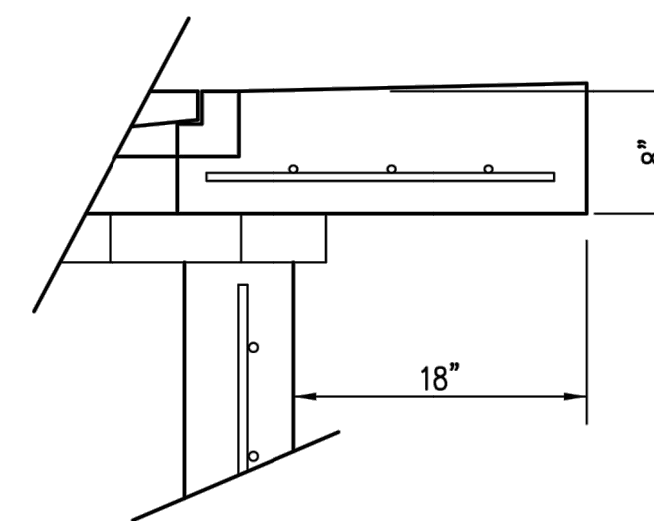


**FLUSH STYLE TOP
NO APRON**



9" APRON

* APRON TO EXTEND ON ALL 4 SIDES OF INLET.
DESIGNER TO DESIGNATE APRON SIZE.



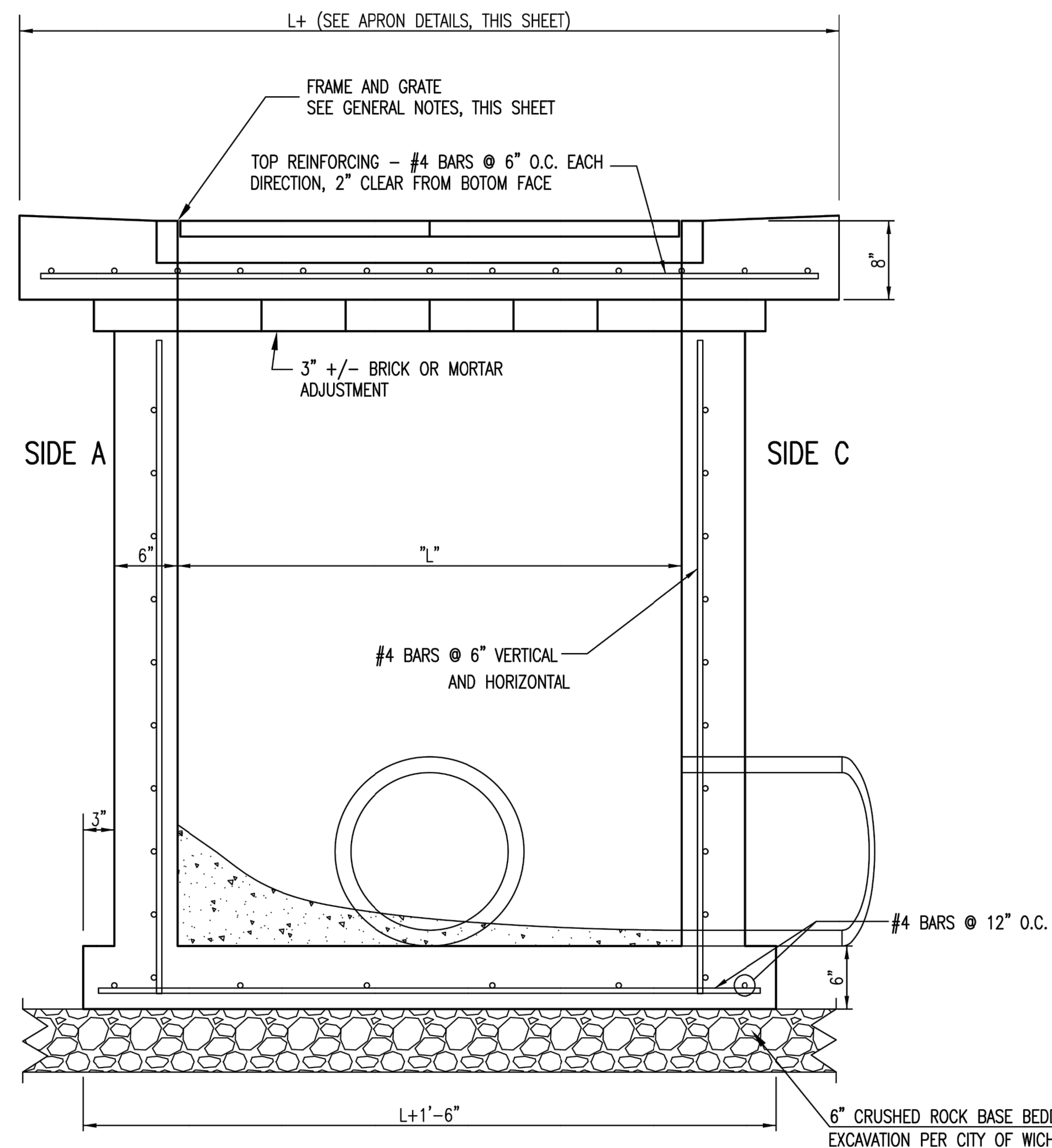
18" APRON

W=2' and L=2' for SINGLE DROP INLET
W=2' and L=4' for DOUBLE DROP INLET

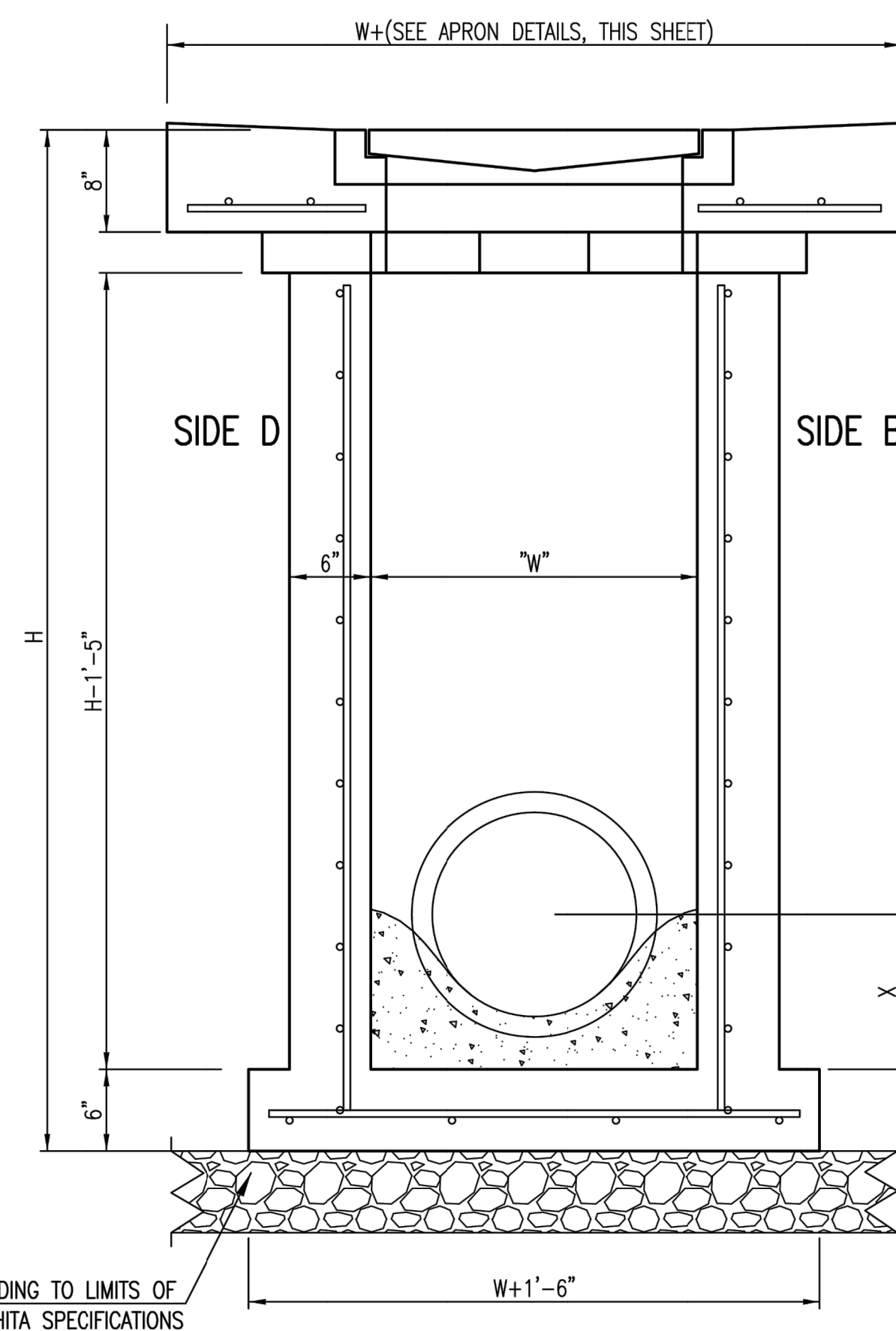
The structure(s) on this detail sheet are designed for HS-20 loading at these specific dimensions only. If larger dimensions are required, the ENGINEER shall provide a project specific structure design for approval by the City Engineer's office.

GENERAL NOTES

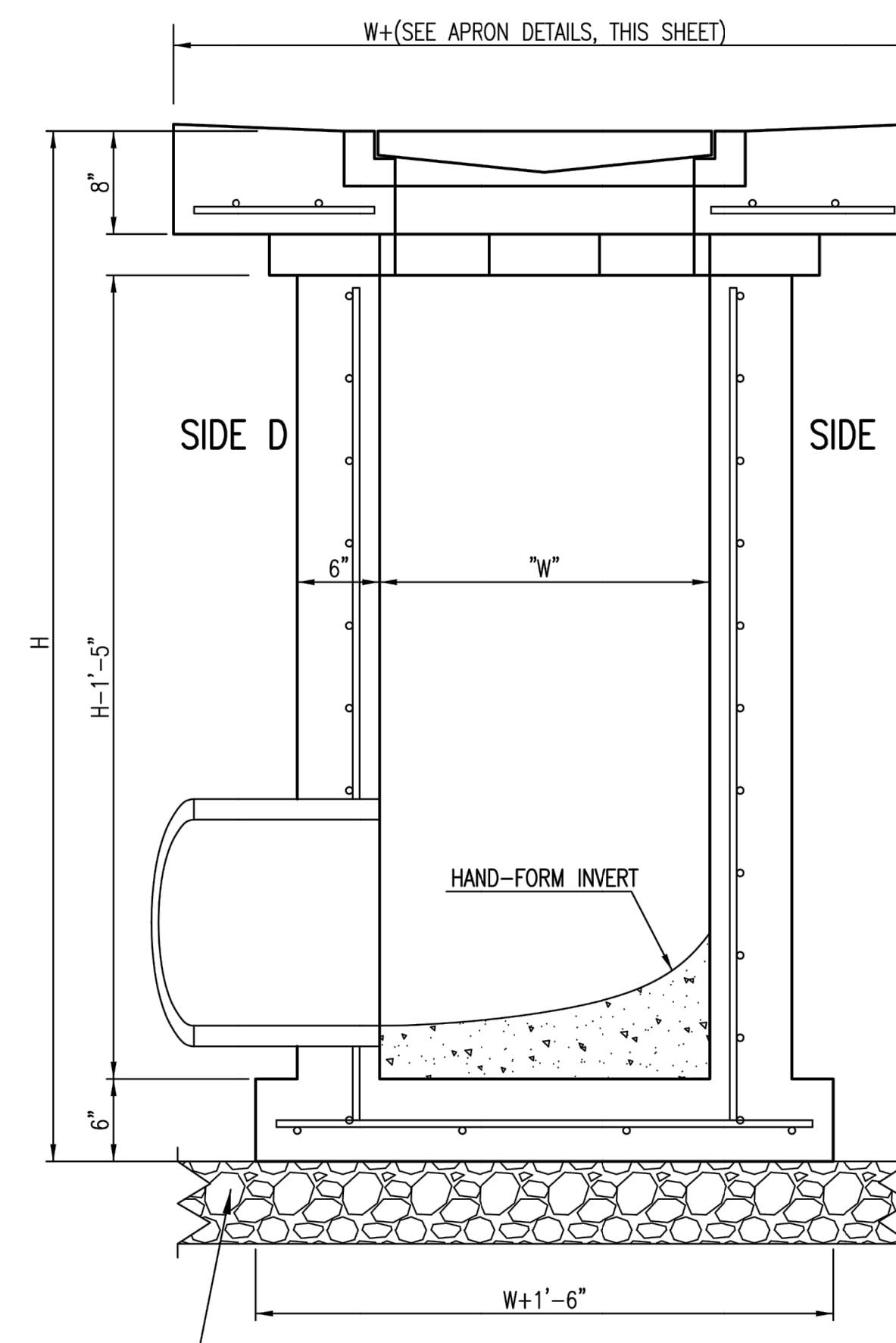
1. GRATE FRAME TO BE INSTALLED ON THIN MORTAR CUSHION TO INSURE FULL SUPPORT ALONG BRICK. CONCRETE USED FOR INLET CONSTRUCTION SHALL CONFORM TO CITY OF WICHITA SPECIFICATIONS FOR CONCRETE PAVEMENT MIX.
2. INLET INVERT SHALL BE SHAPED WITH 8 SACK SAND MIX CONCRETE TO CREATE FLOW CHANNELS AND TO INCREASE HYDRAULIC EFFICIENCY SUCH THAT THE INLET WILL BE SELF CLEANING BETWEEN ALL INLET AND/OR OUTLET PIPES.
3. THE ENDS OF ALL PIPES INSTALLED IN INLETS SHALL BE CUT OFF FLUSH WITH THE INSIDE FACE OF THE INLET WALL.
4. INLET FRAME AND GRATE TO BE DEETER #2433, EJIW #5391-Z1 OR APPROVED EQUAL FOR 2'x2' SINGLE DROP INLET AND DEETER #2434, EJIW #5391 Z3 OR APPROVED EQUAL FOR 2'x4' DOUBLE DROP INLET.
5. CONTRACTOR SHALL REMOVE LIFTING HOOKS AFTER INSTALLATION. RECESSES IN INLET WALL SHALL BE GROUTED FLUSH TO THE INLET WALL WITH HYDRAULIC CEMENT AFTER THE INLET IS IN PLACE. LIFTING HOLES THRU THE INLET WALL WILL NOT BE ACCEPTED.



SECTION "A-A"



**SECTION "B-B"
END OUTLET**

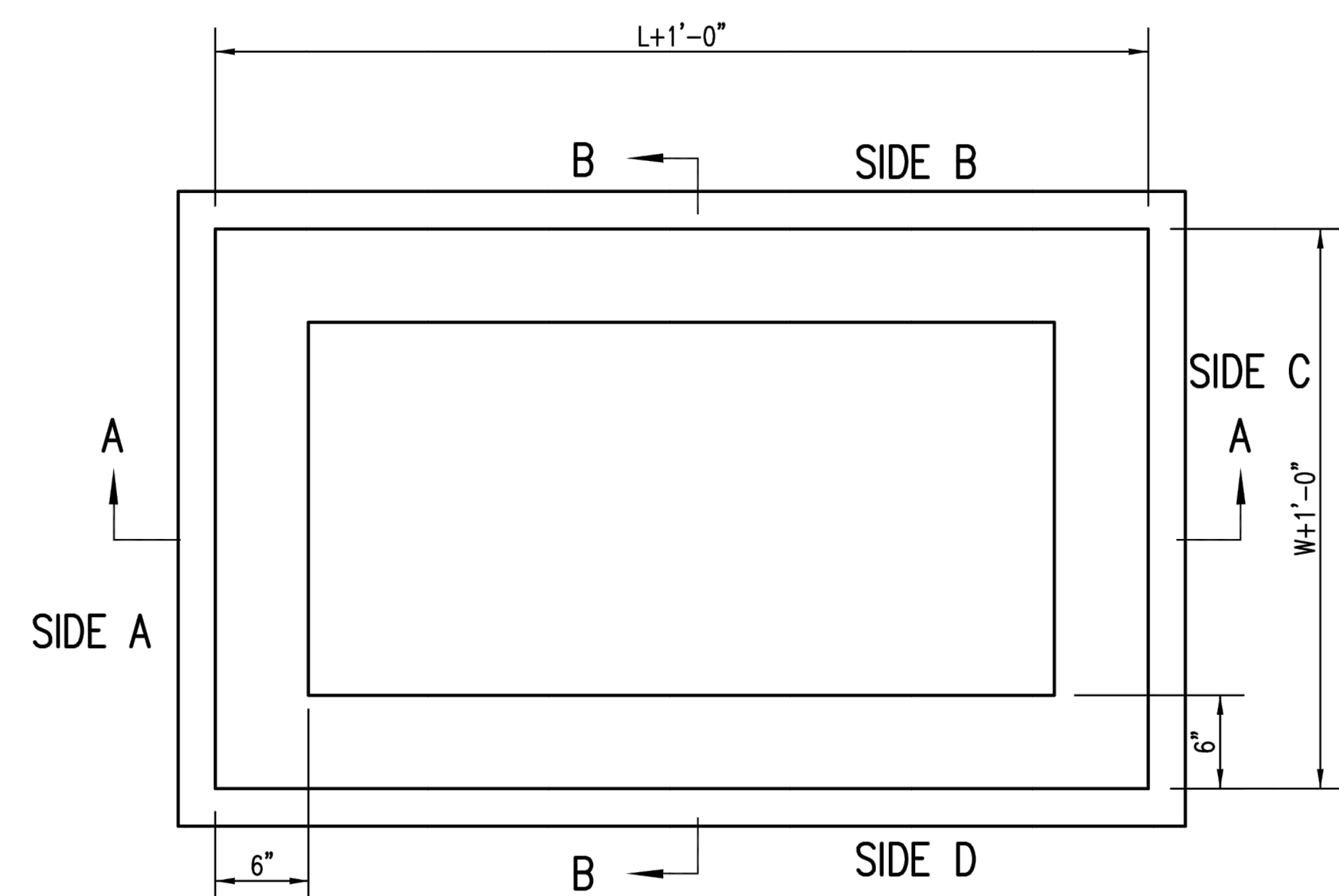


**SECTION "B-B"
SIDE OUTLET**



REVISED: MARCH 2015

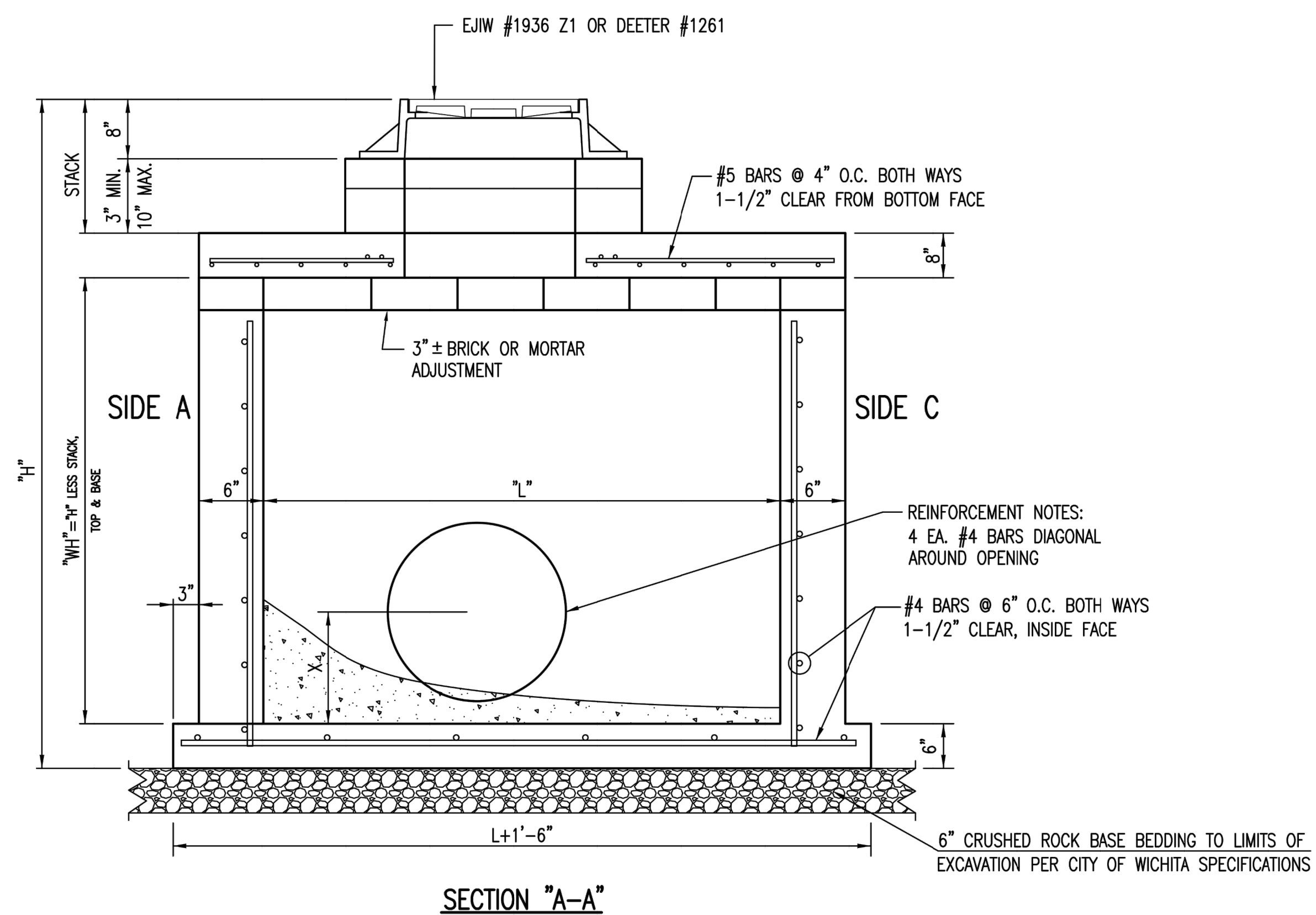
SINGLE/DOUBLE DROP INLET		
CITY ENGINEER GARY JANZEN, P.E.		
PROJECT NUMBER 468-85298	OCA NUMBER 751576	DATE
CITY ENGINEER'S OFFICE CITY HALL - SEVENTH FLOOR 455 NORTH MAIN STREET WICHITA, KANSAS 67202-1620 (316) 268-4501		SHEET 4 7



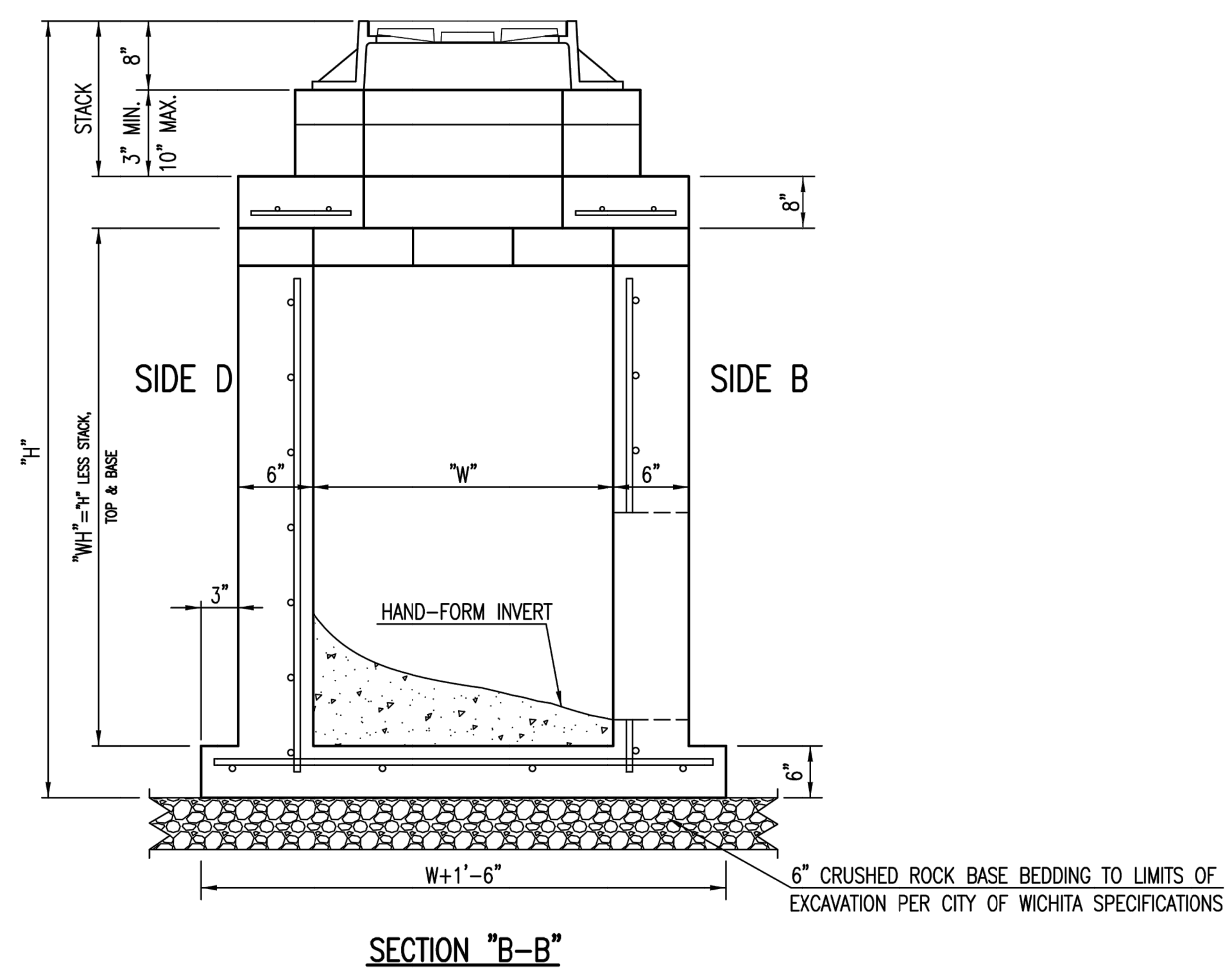
TOP VIEW

GENERAL NOTES

1. GRATE FRAME TO BE INSTALLED ON THIN MORTAR CUSHION TO INSURE FULL SUPPORT ALONG BRICK. CONCRETE USED FOR INLET CONSTRUCTION SHALL CONFORM TO CITY OF WICHITA SPECIFICATIONS FOR CONCRETE PAVEMENT MIX.
2. INLET INVERT SHALL BE SHAPED WITH 8 SACK SAND MIX CONCRETE TO CREATE FLOW CHANNELS AND TO INCREASE HYDRAULIC EFFICIENCY SUCH THAT THE INLET WILL BE SELF CLEANING BETWEEN ALL INLET AND/OR OUTLET PIPES.
3. THE ENDS OF ALL PIPES INSTALLED IN INLETS SHALL BE CUT OFF FLUSH WITH THE INSIDE FACE OF THE INLET WALL.
4. INLET FRAME AND GRATE TO BE DEETER #1261, EJIW #1936-Z1 OR APPROVED EQUAL, SEE SW-303.
5. CONTRACTOR SHALL REMOVE LIFTING HOOKS AFTER INSTALLATION. RECESSES IN MANHOLE WALL SHALL BE GROUTED FLUSH TO THE MANHOLE WALL WITH HYDRAULIC CEMENT AFTER THE MANHOLE IS IN PLACE. LIFTING HOLES THRU THE MANHOLE WALL WILL NOT BE ACCEPTED.



SECTION "A-A"

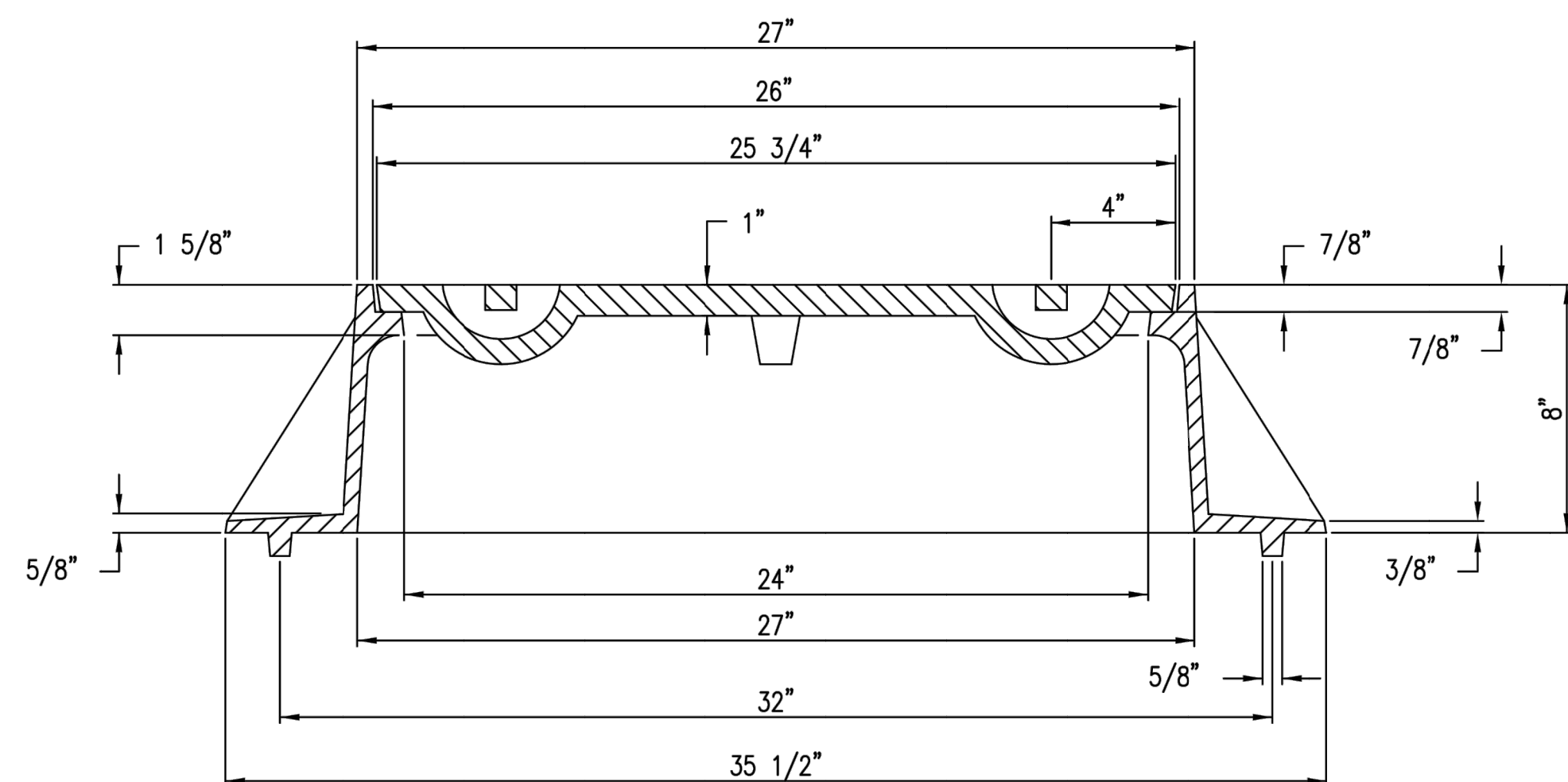
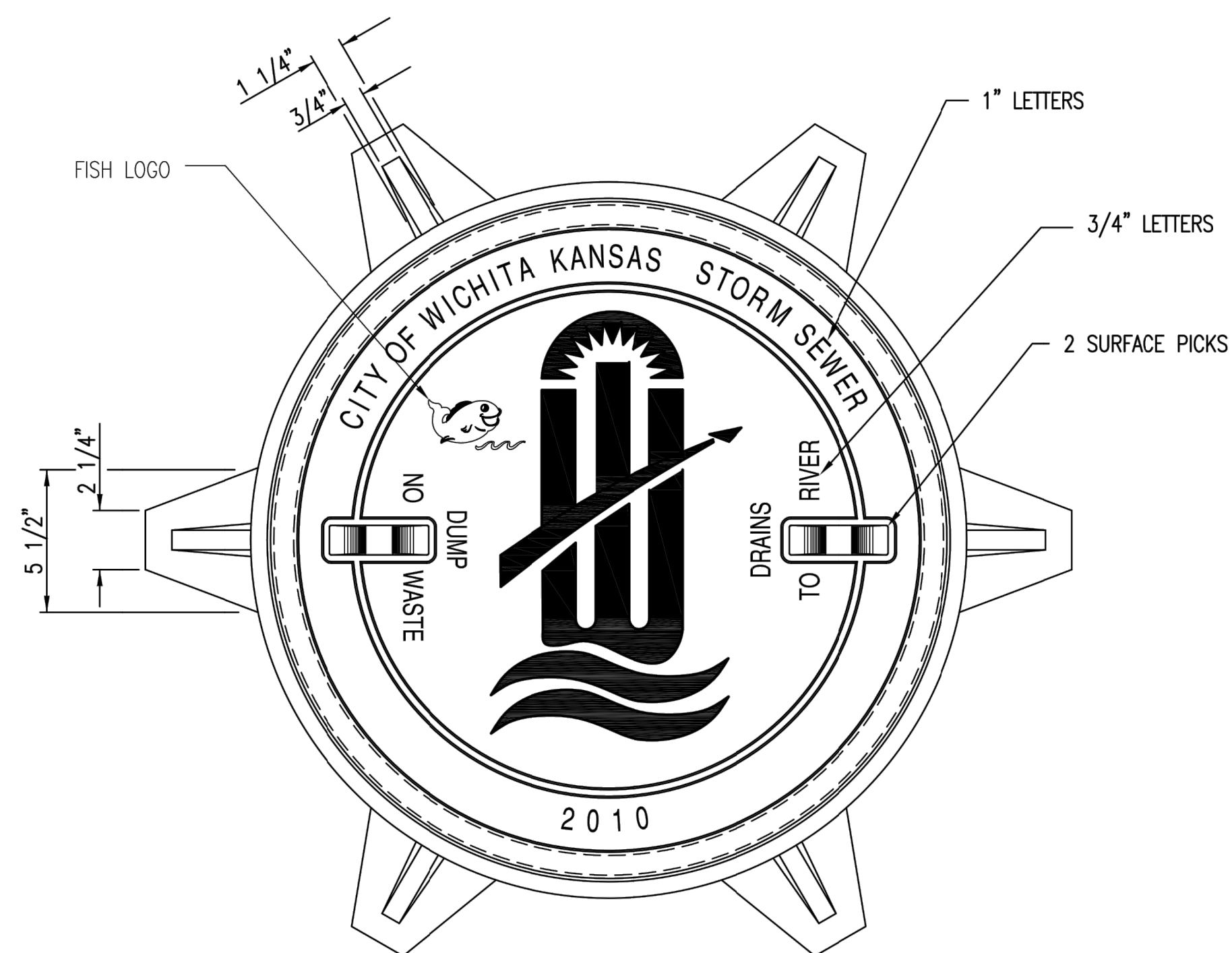
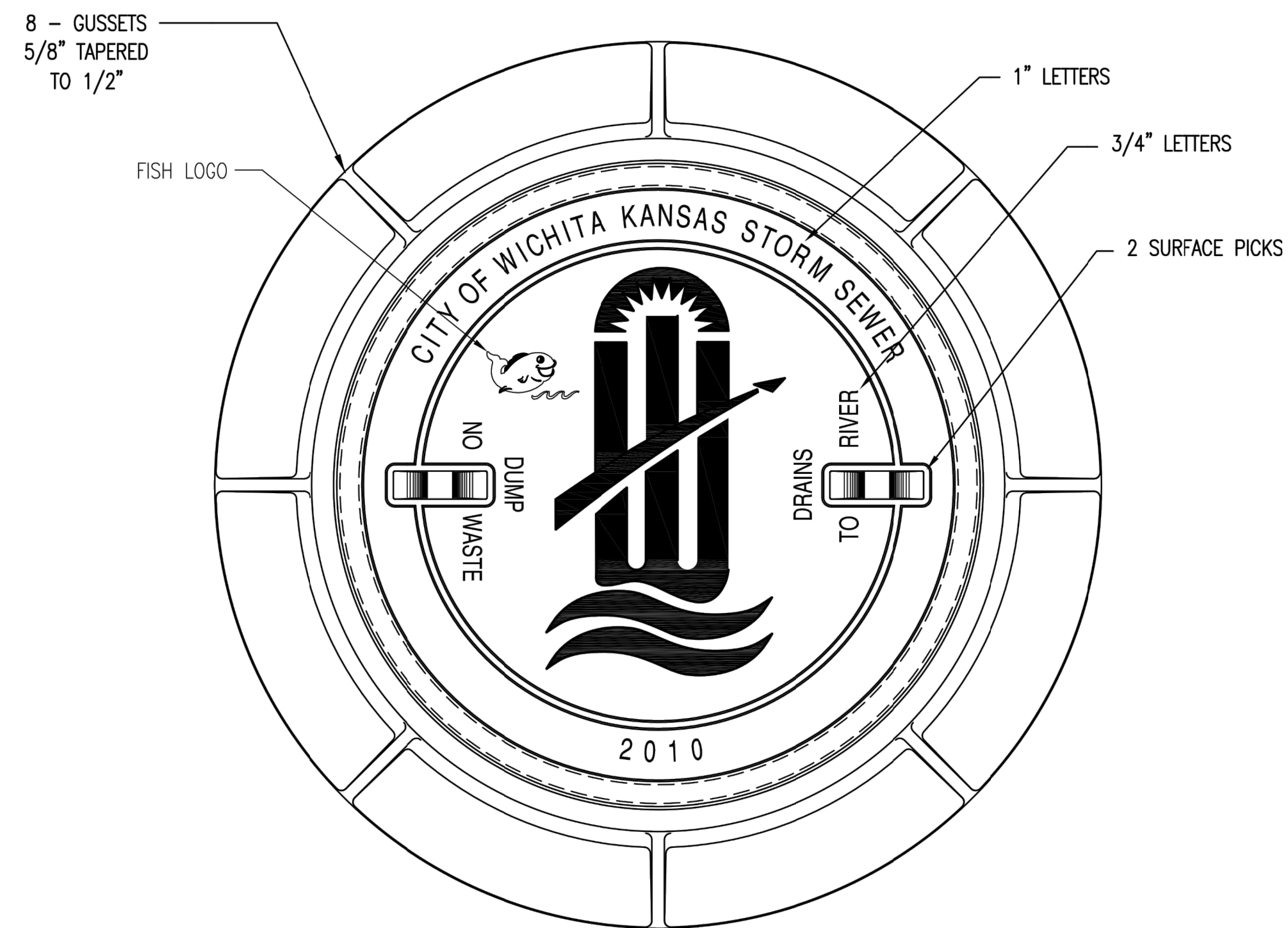


SECTION "B-B"



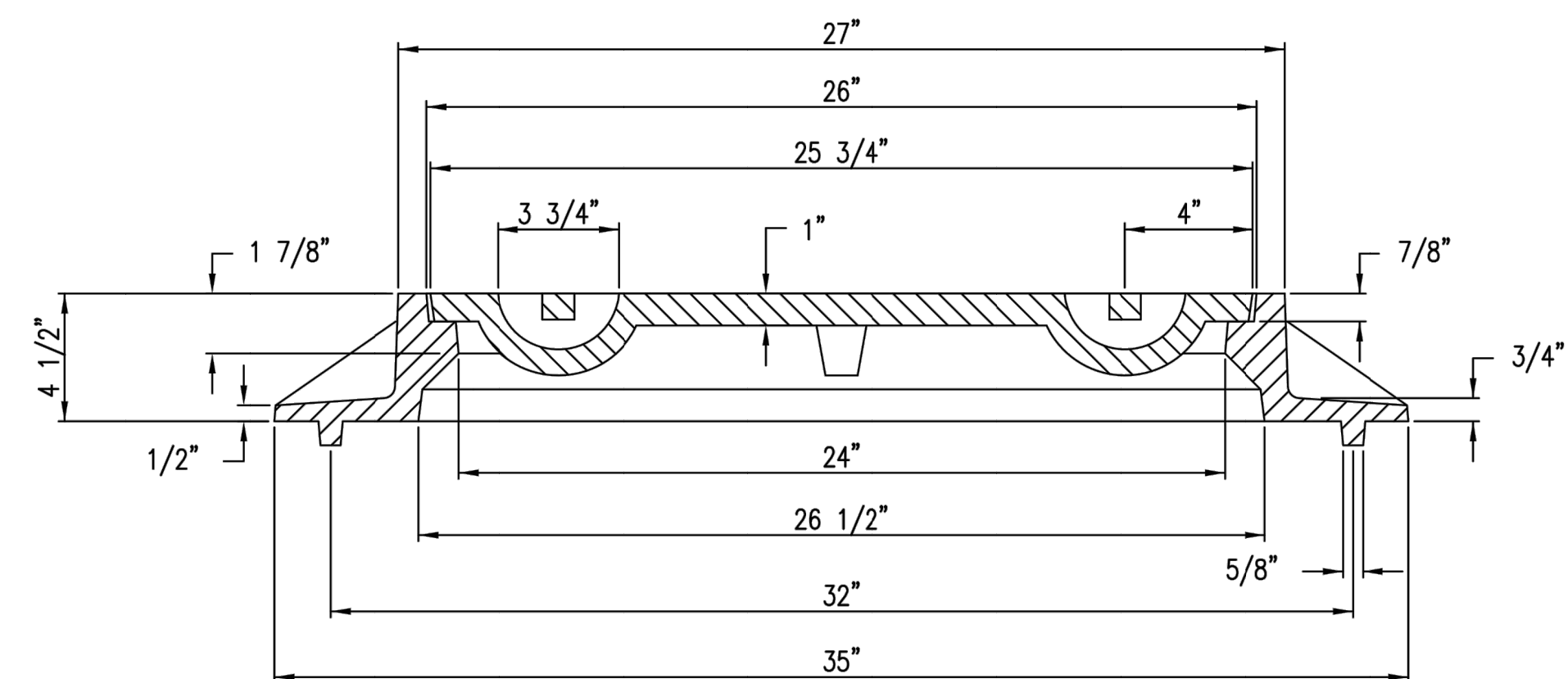
REINFORCED CONCRETE MANHOLE (STORM SEWER)		
CITY ENGINEER GARY JANZEN, P.E.		
PROJECT NUMBER 468-85298	OCA NUMBER 751576	DATE
CITY ENGINEER'S OFFICE CITY HALL - SEVENTH FLOOR 455 NORTH MAIN STREET WICHITA, KANSAS 67202-1620 (316) 268-4501		SHEET 5 7

REVISED: MARCH 2015



MANHOLE FRAME
 DEETER #1261 OR EJIW #1936-Z1

- NOTE:
- FURNISHED WITH MACHINED HORIZONTAL BEARING SURFACE.
 - COVER TO BE DEETER #1261 OR EJIW #1936A.



INLET FRAME
 DEETER #2014 OR EJIW #1936-Z4

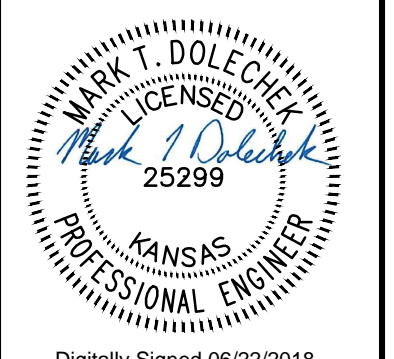
- NOTE:
- FURNISHED WITH MACHINED HORIZONTAL BEARING SURFACES.
 - NOT TO BE USED UNDER PAVEMENT.
 - COVER TO BE DEETER #1261 OR EJIW #1936A.



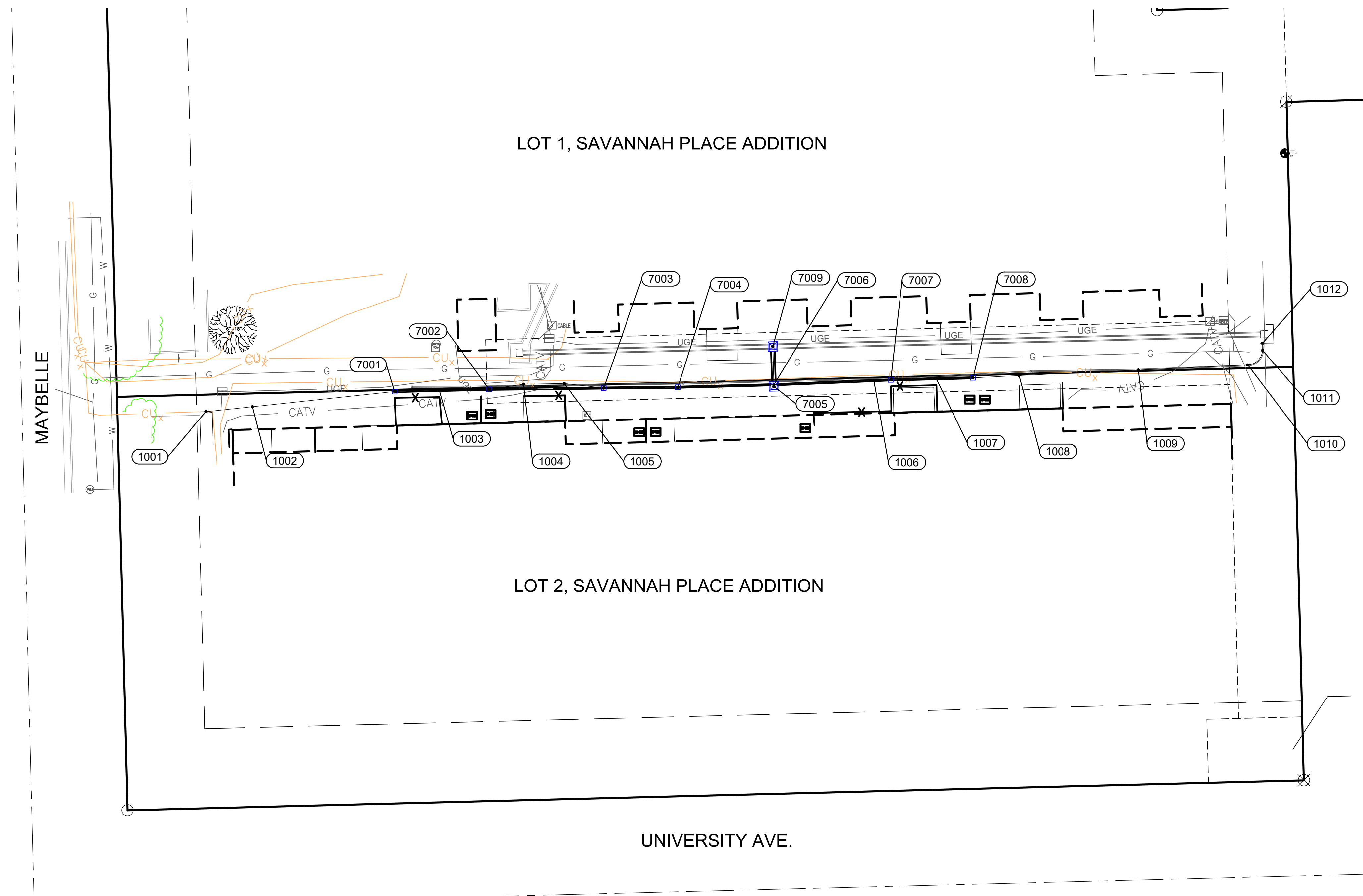
MANHOLE/INLET FRAME AND COVER (STORM SEWER)		
CITY ENGINEER GARY JANZEN, P.E.		
PROJECT NUMBER 468-85298	OCA NUMBER 751576	DATE 11/2010
CITY ENGINEER'S OFFICE CITY HALL - SEVENTH FLOOR 455 NORTH MAIN STREET WICHITA, KANSAS 67202-1620 (316) 268-4501		SHEET 6
		7



© 2018 GARVER, LLC
 THIS DOCUMENT, ALONG WITH THE IDEAS AND DESIGNS CONVEYED HEREIN, SHALL BE CONSIDERED INSTRUMENTS OF PROFESSIONAL SERVICE AND ARE PROPERTY OF GARVER, LLC. ANY USE, REPRODUCTION, OR DISTRIBUTION OF THIS DOCUMENT, ALONG WITH THE IDEAS AND DESIGN CONTAINED HEREIN, IS PROHIBITED UNLESS AUTHORIZED IN WRITING BY GARVER, LLC OR EXPLICITLY ALLOWED IN THE GOVERNING PROFESSIONAL SERVICES AGREEMENT FOR THIS WORK.



Digitally Signed 06/22/2018



Point #	Northing	Easting	Description	Station/Offset (If Applicable)
1001	1682555.12	1617474.99	Match Grade	
1002	1682556.69	1617489.58	High Point	
1003	1682561.81	1617548.34	High Point	SWS Line 1, STA:1+17.21, OFF:0.00'
1004	1682563.76	1617574.77	High Point & PI	SWS Line 1, STA:0+90.76, OFF:1.46'RT
1005	1682564.02	1617587.53	Swale FL PI	SWS Line 1, STA:0+78.00, OFF:1.58'RT
1006	1682564.90	1617684.94	High Point	SWS Line 2, STA:0+31.47, OFF:0.00'
1007	1682565.49	1617704.59	High Point	SWS Line 2, STA:0+51.12, OFF:0.00'LT
1008	1682566.49	1617730.65	High Point	
1009	1682568.20	1617768.11	Swale FL	
1010	1682569.81	1617802.51	Swale FL PC	
1011	1682574.38	1617807.16	Swale FL PT	
1012	1682576.64	1617807.13	Match Grade	

Point #	Northing	Easting	Description
7001	1682561.48	1617534.26	Drain Assembly
7002	1682562.18	1617563.98	Drain Assembly & PI
7003	1682562.58	1617600.01	Drain Assembly
7004	1682562.83	1617623.32	Drain Assembly & PI
7005	1682563.10	1617653.51	Drop Inlet
7006	1682563.60	1617653.50	PI
7007	1682565.12	1617690.25	Drain Assembly & PI
7008	1682565.78	1617716.13	Drain Assembly
7009	1682575.62	1617653.17	Manhole

REV.	DATE	DESCRIPTION	BY

CITY OF WICHITA
 WICHITA, KANSAS
 SAVANNAH PLACE SWS

Bubble Map

JOB NO.: 18267010
 DATE: June 2018
 DESIGNED BY: MTD
 DRAWN BY: MTD

BAR IS ONE INCH ON ORIGINAL DRAWING
 0 1" IF NOT ONE INCH ON THIS SHEET, ADJUST SCALES ACCORDINGLY.

DRAWING NUMBER

SHEET NUMBER **7** OF **7**

File: L:\2018\18267010 - Savannah Place SWS\Drawings\C3D\Final Plans\Bubble Map.dwg, Last Saved: 5/29/2018 11:39 AM, Last saved by: MTDolechek
 Last plotted by: Dolechek, Mark T., Plot Style: ---, Plot Scale: 1:2,584.9, Plot Date: 6/22/2018 10:30 AM, Plotter used: None