

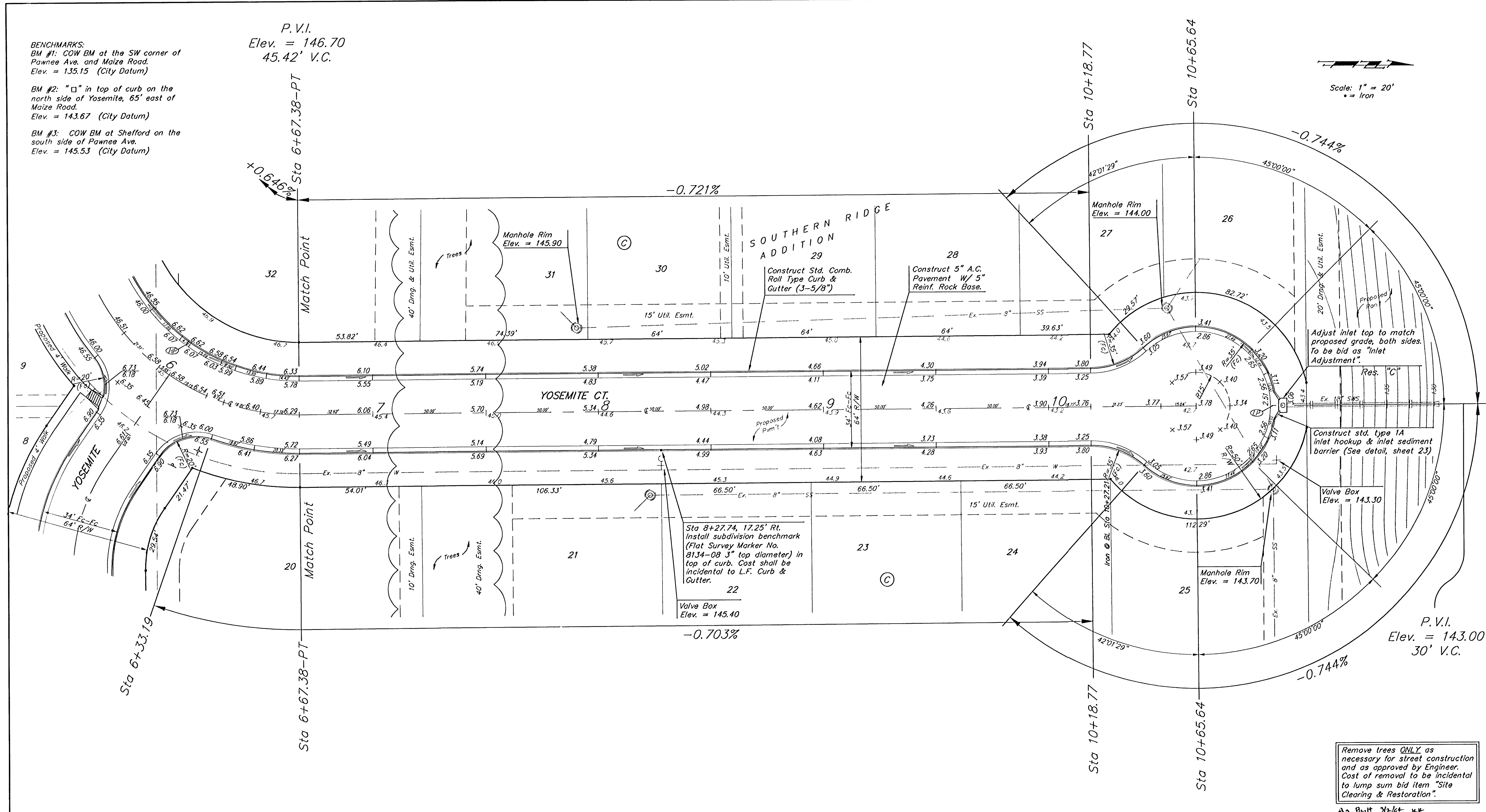
BENCHMARKS:
 BM #1: COW BM at the SW corner of Pawnee Ave. and Maize Road.
 Elev. = 135.15 (City Datum)

BM #2: "□" in top of curb on the north side of Yosemite, 65' east of Maize Road.
 Elev. = 143.67 (City Datum)

BM #3: COW BM at Shelford on the south side of Pawnee Ave.
 Elev. = 145.53 (City Datum)

P.V.I.
 Elev. = 146.70
 45.42' V.C.

Scale: 1" = 20'
 • = Iron



Sta 8+27.74, 17.25' Rt.
 Install subdivision benchmark
 (Flat Survey Marker No.
 8134-08 3" top diameter) in
 top of curb. Cost shall be
 incidental to L.F. Curb &
 Gutter.

Valve Box
 Elev. = 145.40

Adjust inlet top to match
 proposed grade, both sides.
 To be bid as "Inlet
 Adjustment".

Construct std. type 1A
 inlet hookup & inlet sediment
 barrier (See detail, sheet 23)

Valve Box
 Elev. = 143.30

P.V.I.
 Elev. = 143.00
 30' V.C.

Remove trees ONLY as
 necessary for street construction
 and as approved by Engineer.
 Cost of removal to be incidental
 to lump sum bid item "Site
 Clearing & Restoration".

NOTE: ROLL TYPE CURB & GUTTER TO
 BE CONSTRUCTED ON THE
 PAVEMENT SHOWN ON THIS SHEET.
 TOP OF CURB ELEVATIONS ARE
 GIVEN FOR FULL HEIGHT CURB.

SOUTHERN RIDGE ADDITION
YOSEMITE CT.
 STA 6+33.19 TO STA 10+65.64

BAUGHMAN COMPANY P.A.
 ENGINEERING, SURVEYING, & PLANNING
 318-262-7271 • 315 ELLIS • WICHITA, KANSAS 67211

PROJECT NUMBER
472-83881

DESIGN: NBW DRAWN: TMS APPROVED: DATE: 05/03 SCALE: Noted

SHEET
15
 OF
48

02-17-E464