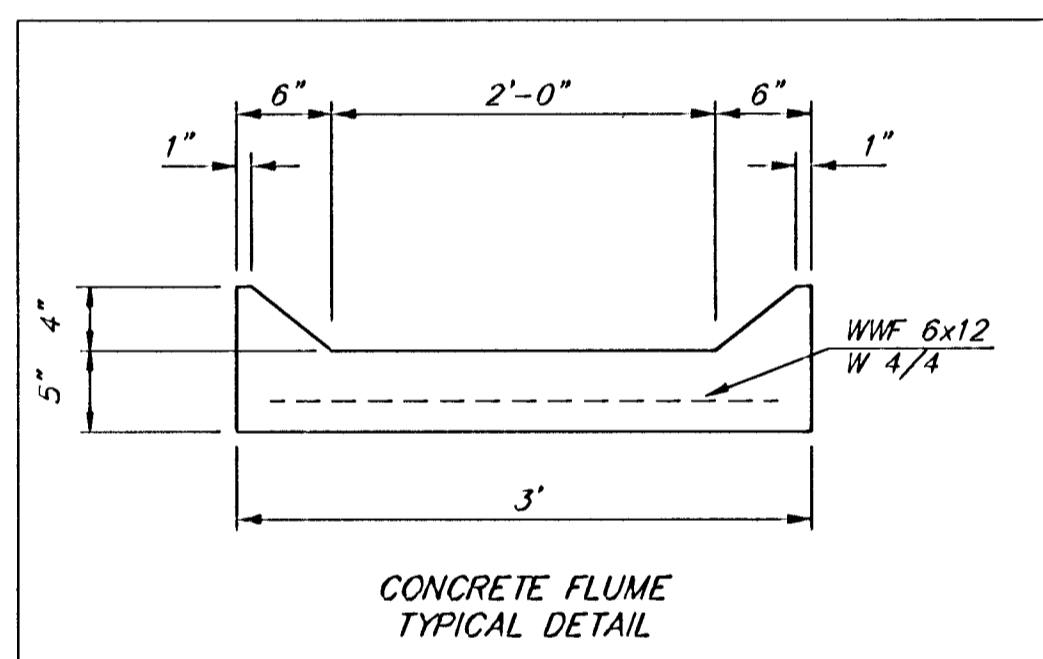
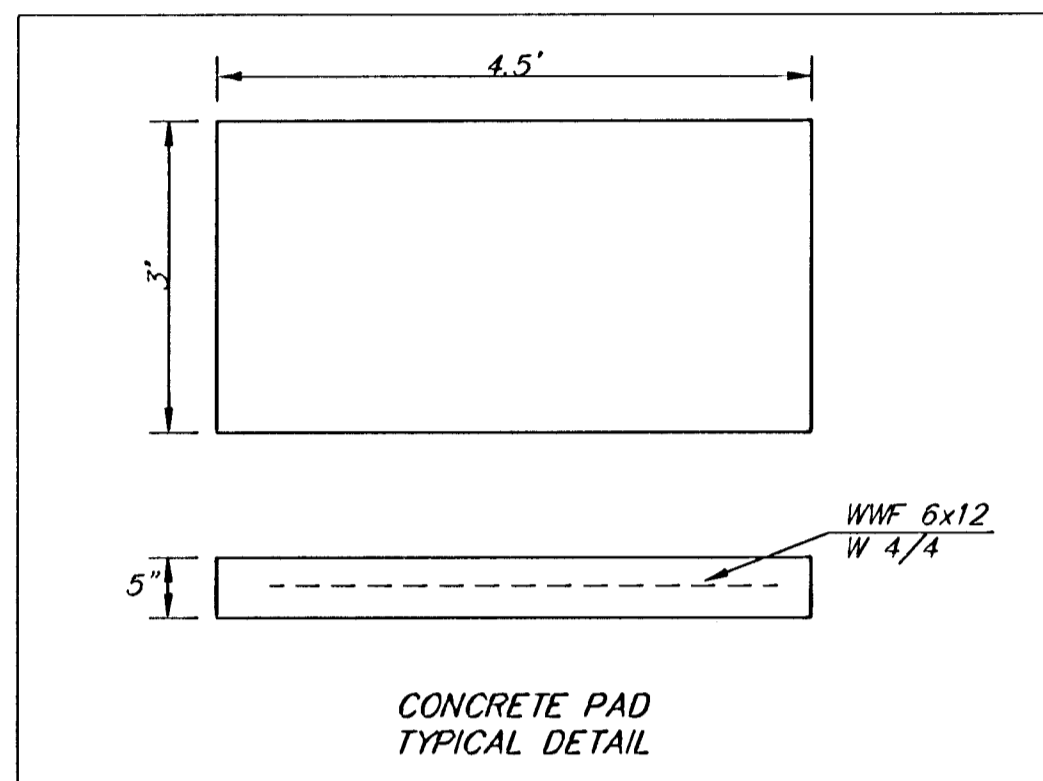


BENCHMARKS:
 BM #1: COW BM at the SW corner of Pawnee Ave. and Maize Road.
 Elev. = 135.15 (City Datum)

BM #2: "□" in top of curb on the north side of Yosemite, 65' east of Maize Road.
 Elev. = 143.67 (City Datum)

BM #3: COW BM at Shefford on the south side of Pawnee Ave.
 Elev. = 145.53 (City Datum)



Curve #14
 Curve Data Based on Centerline
 Rad. = 100' Delta = 37°03'02" Tangent = 33.51'
 Arc = 64.67' L.C. = 63.54' Def/Fl. = 17.19752 Min.

Station	Arc	FACE CHORD LENGTHS		Defl.	T. Defl.
		8' Lt.	8' Rt.		
4+12.98	-	-	-	0°00'00"	0°00'00"
4+25.00	12.02'	9.01'	15.01'	3°26'35"	3°26'35"
4+50.00	25.00'	18.70'	31.17'	7°09'41"	10°36'17"
4+57.26	7.26'	5.44'	9.07'	2°04'47"	12°41'04"
4+75.00	17.74'	13.29'	22.14'	5°04'54"	17°45'58"
4+77.65	2.65'	1.99'	3.31'	0°45'33"	18°31'31"

Curve #15
 Curve Data Based on Centerline
 Rad. = 117' Delta = 37°03'02" Tangent = 39.21'
 Arc = 75.66' L.C. = 74.35' Def/Fl. = 14.69094 Min.

Station	Arc	FACE CHORD LENGTHS		Defl.	T. Defl.
		8' Lt.	8' Rt.		
Q	-	-	-	0°00'00"	0°00'00"
R	26.15'	27.88'	62°41'0"	6°24'10"	6°24'10"
S	29.25'	31.17'	7°09'43"	13°33'52"	13°33'52"
T	20.26'	21.62'	4°57'38"	18°31'31"	18°31'31"

Curve #16
 Curve Data Based on Centerline
 Rad. = 115' Delta = 25°22'22" Tangent = 25.89'
 Arc = 50.94' L.C. = 50.51' Def/Fl. = 14.94274 Min.

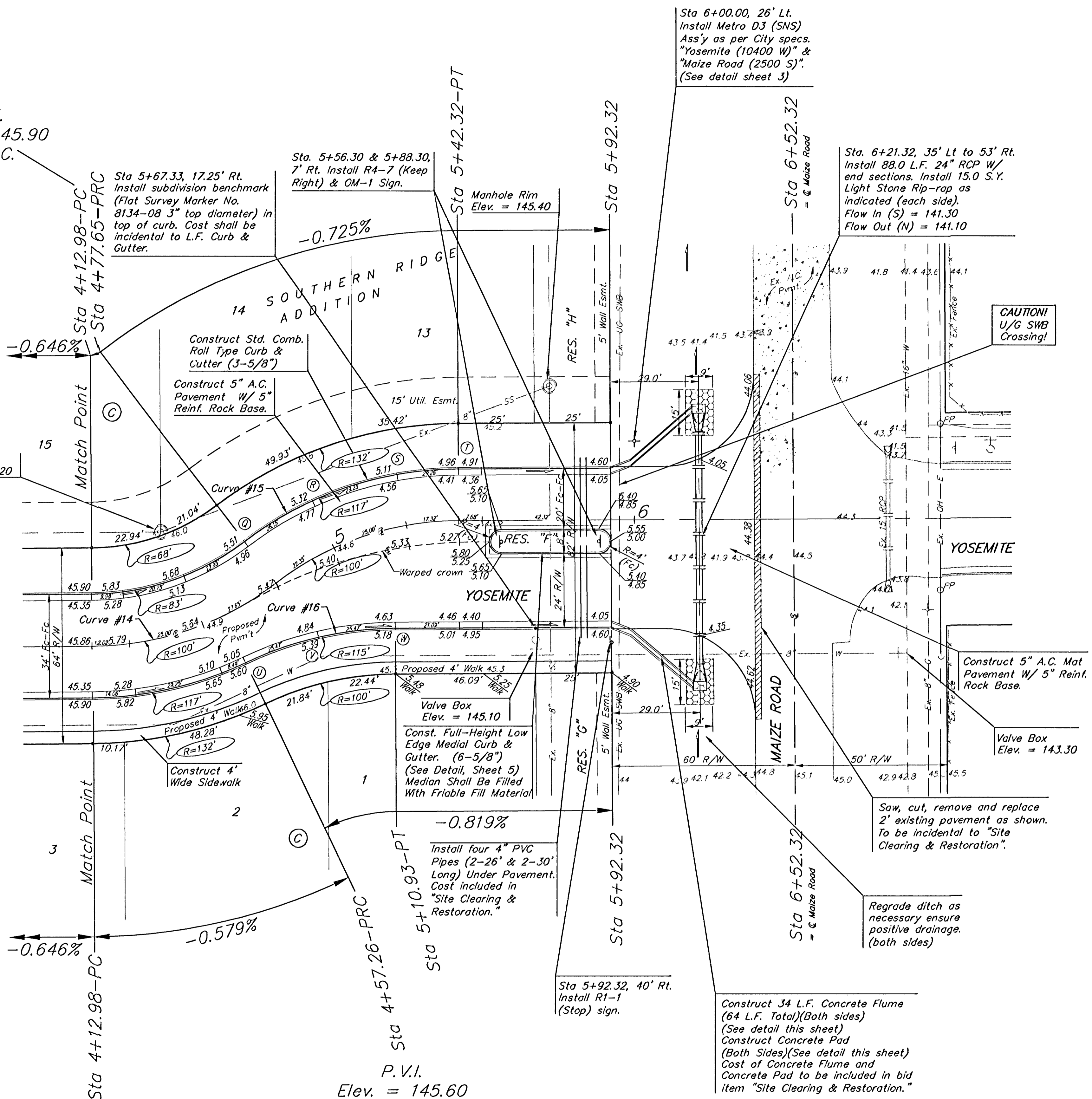
Station	Arc	FACE CHORD LENGTHS		Defl.	T. Defl.
		8' Lt.	8' Rt.		
U	-	-	-	0°00'00"	0°00'00"
V	25.47'	23.64'	6°20'35"	6°20'35"	6°20'35"
W	25.50'	23.67'	6°21'02"	12°41'38"	12°41'38"

P.V.I.
 Elev. = 145.90
 No V.C.

Manhole Rim
 Elev. = 146.20

Match Point

P.V.I.
 Elev. = 145.90
 No V.C.



Contractor shall install permanent seed and curlex erosion control mat over all disturbed areas in Maize Rd. R/W.

NOTE: ROLL TYPE CURB & GUTTER TO BE CONSTRUCTED ON THE PAVEMENT SHOWN ON THIS SHEET. TOP OF CURB ELEVATIONS ARE GIVEN FOR FULL HEIGHT CURB.

Scale: 1" = 20'
 • = Iron

A7 Built 7/16/11

SOUTHERN RIDGE ADDITION
YOSEMITE
 STA 4+12.98 TO STA 6+52.32

BAUGHMAN COMPANY P.A.
 ENGINEERING, SURVEYING, & PLANNING
 318-282-7271 • 318 ELLIS • WICHITA, KANSAS 67211

PROJECT NUMBER
472-03081

DESIGN NBW	DRAWN TMS	APPROVED	DATE 05/03	SCALE Noted	SHEET 17 OF 48
---------------	--------------	----------	---------------	----------------	-------------------------