

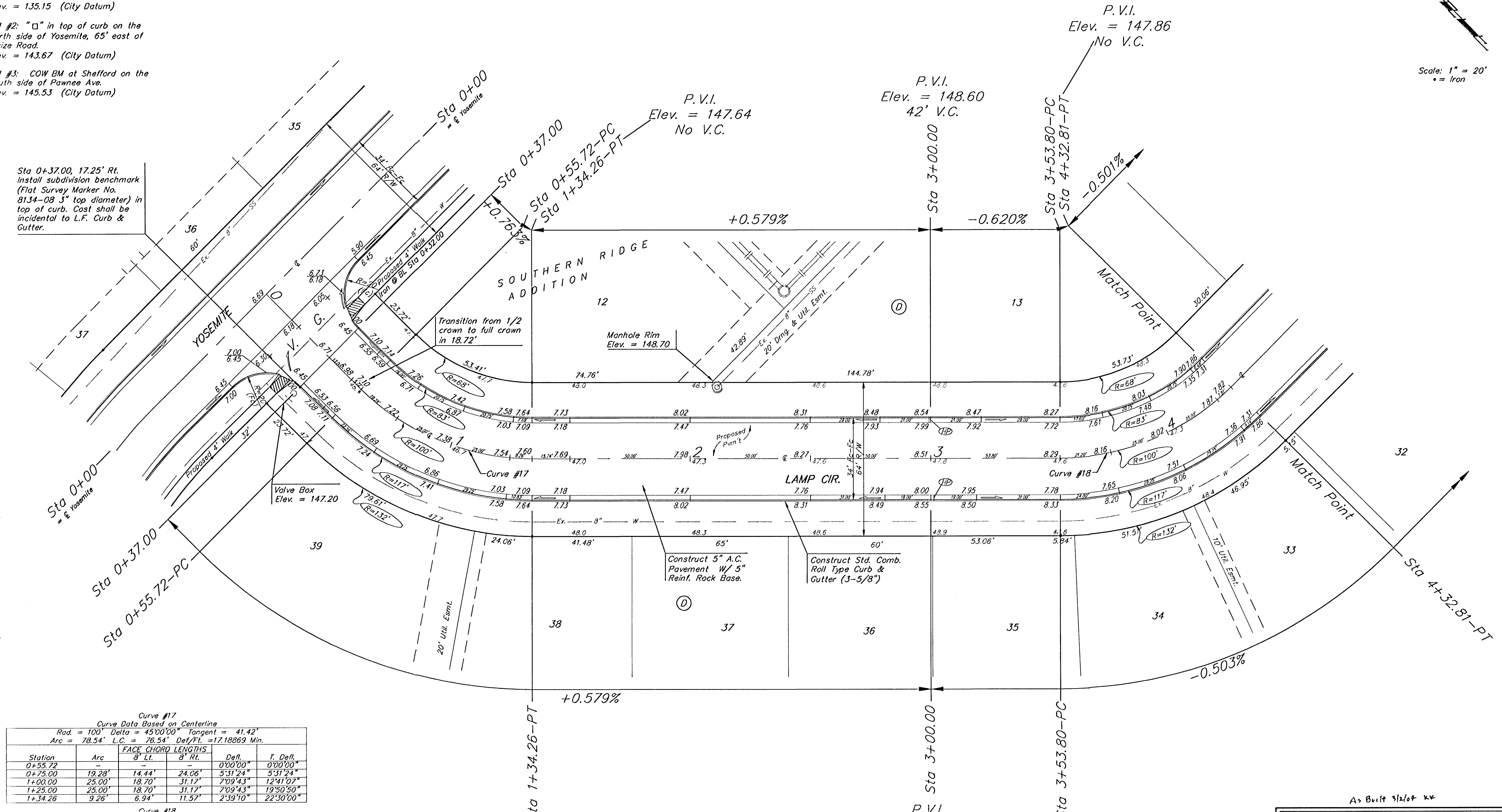
BENCHMARKS:
 BM #1: COW BM at the SW corner of Pawnee Ave. and Maize Road.
 Elev. = 135.15 (City Datum)

BM #2: "□" in top of curb on the north side of Yosemite, 65' east of Maize Road.
 Elev. = 143.67 (City Datum)

BM #3: COW BM at Shefford on the south side of Pawnee Ave.
 Elev. = 145.53 (City Datum)

Sta 0+37.00, 17.25' Rt. Install subdivision benchmark (Flat Survey Marker No. 8134-08 3" top diameter) in top of curb. Cost shall be incidental to L.F. Curb & Gutter.

Scale: 1" = 20'
 • = Iron



Curve #17
 Curve Data Based on Centerline
 Rad. = 100' Delta = 45°00'00" Tangent = 41.42'
 Arc = 78.54' L.C. = 76.54' Def/ft. = 17.18869 Min.

Station	Arc	FACE CHORD LENGTHS		Defl.	T. Defl.
		8' Lt.	8' Rt.		
0+55.72	-	-	-	0°00'00"	0°00'00"
0+75.00	19.28'	14.44'	24.06'	5°31'24"	5°31'24"
1+00.00	25.00'	18.70'	31.17'	7°09'43"	12°41'07"
1+25.00	25.00'	18.70'	31.17'	7°09'43"	19°50'50"
1+34.26	9.26'	6.94'	11.57'	2°39'10"	22°30'00"

Curve #18
 Curve Data Based on Centerline
 Rad. = 100' Delta = 45°16'14" Tangent = 41.70'
 Arc = 79.01' L.C. = 76.97' Def/ft. = 17.18918 Min.

Station	Arc	FACE CHORD LENGTHS		Defl.	T. Defl.
		8' Lt.	8' Rt.		
3+53.80	-	-	-	0°00'00"	0°00'00"
3+75.00	21.20'	15.87'	26.45'	6°04'24"	6°04'24"
4+00.00	25.00'	18.70'	31.17'	7°09'44"	13°14'08"
4+25.00	25.00'	18.70'	31.17'	7°09'44"	20°23'52"
4+32.81	7.81'	5.86'	9.76'	2°14'15"	22°38'07"

NOTE: ROLL TYPE CURB & GUTTER TO BE CONSTRUCTED ON THE PAVEMENT SHOWN ON THIS SHEET. TOP OF CURB ELEVATIONS ARE GIVEN FOR FULL HEIGHT CURB.

As Built 3/2/04 KY

SOUTHERN RIDGE ADDITION
LAMP CIR.
 STA 0+00 TO STA 4+32.81

BAUGHMAN COMPANY P.A.
 ENGINEERING, SURVEYING, & PLANNING
 316-282-7271 • 315 ELLIS • WICHITA, KANSAS 67211

PROJECT NUMBER
472-63881

DESIGN NBW	DRAWN TMS	APPROVED	DATE 05/03	SCALE Noted	SHEET 18
---------------	--------------	----------	---------------	----------------	--------------------

02-17-E462
 Storage 5/17/03