

GENERAL NOTES:

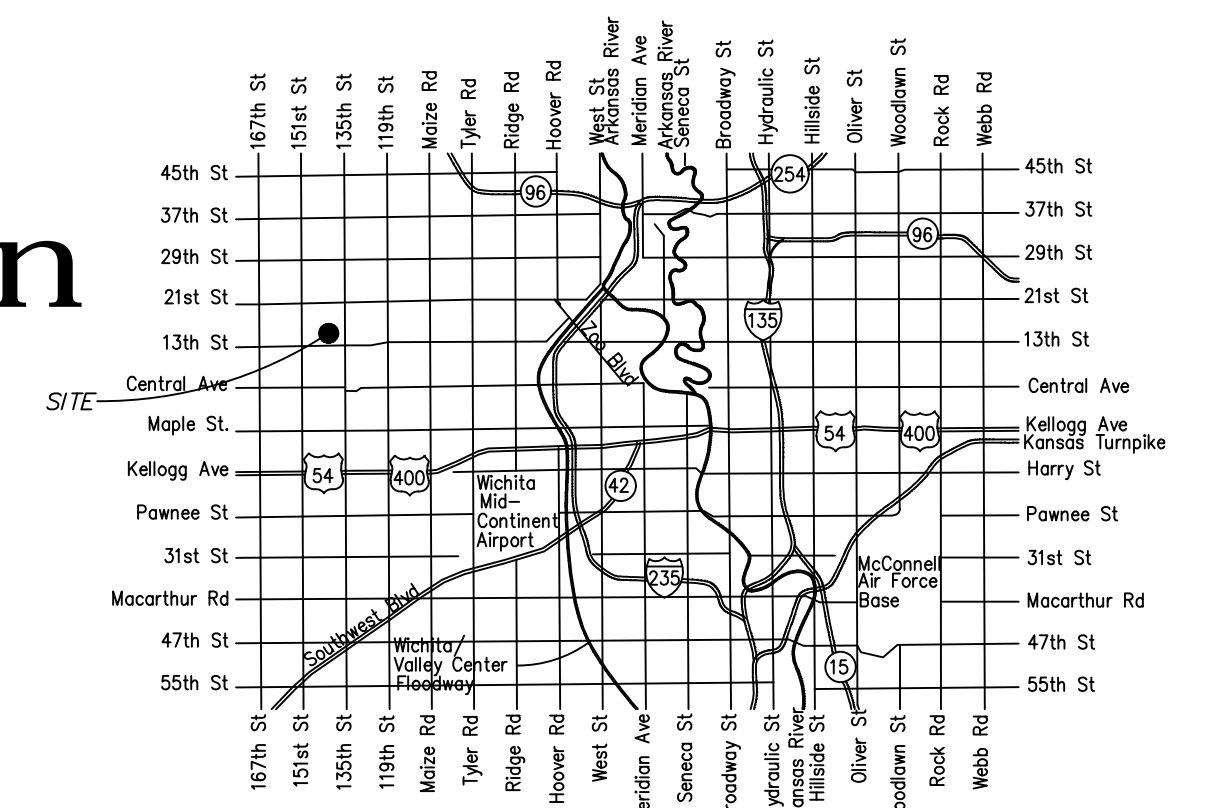
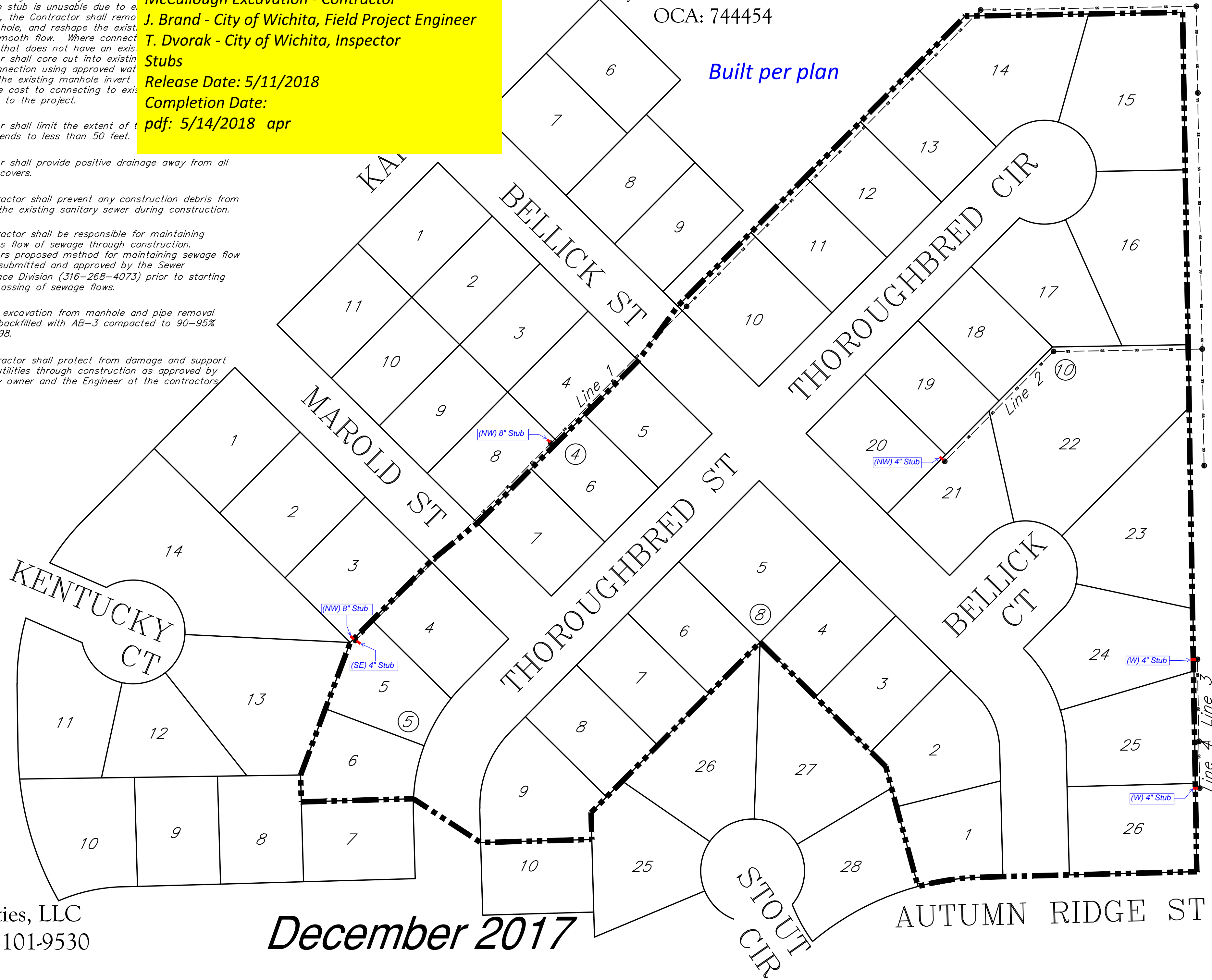
- The Contractor shall comply with all applicable safety regulations. All construction shall be completed following current City Standard Specifications and Special Provisions.
- Contractor will be required to provide notice to utility companies a minimum of seventy-two (72) hours prior to any excavation, as follows:
 Kansas One-Call 687-2470
 The Contractor must notify the following in case of an emergency:
 AT&T 1-800-246-8464
 Black Hills Energy 1-800-694-8989
 City of Wichita Water & Sewer 1-316-219-8921
 City of Wichita Stormwater 1-316-268-4090
 City of Wichita Traffic 1-316-268-4034
 Cox Communications 1-888-249-3530
 Kansas Gas Service 1-888-482-4950
 Westar Energy 1-800-544-4857
- Utility service lines, poles, etc. are to be adjusted as necessary by others prior to construction unless the plans specifically call for their adjustment by the Contractor or unless the plans specifically identify a utility to be adjusted by its owner during construction. Existing utilities and their location, as shown on the plans, represent the best information obtainable for design. The Contractor will be required to work around existing utilities within the right-of-way which do not conflict with proposed construction.
- Rubble from the removal of miscellaneous structures and excess excavation which is to be wasted shall be disposed of on sites to be provided by the Contractor. These sites shall be approved by the Engineer as to suitability, appearance and site location. Locations, in the opinion of the Engineer, that will leave an unsightly appearance will not be approved. All disposal sites must be approved by the Kansas Department of Health and Environment. Material either stockpiled or disposed of in a flood plain will require a Kansas State Board of Agriculture permit. Any material dumped in waters of the United States or wetlands is subject to U.S. Corps of Engineers permitting regulations. Any material buried or stockpiled beyond approved construction limits will require additional archaeological investigations unless buried in a previously approved borrow location.
- Trees and shrubs in public right-of-way which are in direct conflict with proposed new construction shall be removed by the Contractor with the City Engineer's approval. Trees and shrubs which are not in direct conflict with proposed new construction shall be saved and protected from damage.
- The Contractor shall give all property owners and/or tenants of developed property abutting the construction of this project a minimum of ten (10) days notice prior to start of construction.
- The Contractor shall be responsible for preserving property irons. The Contractor will be required to re-establish any property irons which are damaged or destroyed by his construction operations. Such irons shall be re-established by a licensed land surveyor in accordance with state laws.
- The Engineering Division shall field locate water valves one time during construction when requested by the Contractor. It shall be the Contractor's responsibility to preserve such field locations during the construction process. Water valves, valve boxes or fire hydrants damaged during construction shall be repaired by Contractor at his own expense. Valve boxes and water meters within the project limits shall be adjusted to match final grades by the contractor.
- The Contractor shall notify the inspecting engineer and Tom Mason at 316-268-4574 with the City of Wichita with the anticipated construction start date and notify them of project completion. Staking and inspection for this project will be the responsibility of the Contractor.
- If traffic will be impacted by construction, a traffic control plan must be submitted and approved by the City Traffic Engineer, Brian Coon at traffic@wichita.gov, before construction can begin. The Contractor shall be responsible for all traffic control measures to facilitate construction. All construction zone markings and signage shall conform to the latest version of the Manual on Uniform Traffic Control Devices (MUTCD) as published by the US Dept. of Transportation, Federal Highway Administration. All costs associated with construction markings and signage shall be the Contractors responsibility.
- All elevations shown are NAVD 88.
- All areas disturbed during construction that will not be under proposed pavement shall be restored to match existing conditions.

- Any sidewalk, drive approach, curb, or street pavement removed to construct project must have a pavement cut permit and be replaced by the City contractor. Permits can be obtained by calling 316-268-4501 or 316-268-4480.
- All applicable fees (tap, equity, in lieu of & main benefit) must be paid before any connections can be made on this project. Quotes can be obtained on fees by calling 316-268-4555.
- City Maintenance of sanitary sewer mains ends at last structure within the easement or right-of-way.
- All stubs and capped pipes shall be located with green plastic tape in the same manner as
- Connecting to Existing Manholes: Prior to laying sewer lines using existing manholes, the Contractor shall expose elevation, grade and alignment of existing manhole. Where the stub is unusable due to e alignment, the Contractor shall remove plug the hole, and reshape the exist provide smooth flow. Where connect manhole that does not have an exist Contractor shall core cut into exist make connection using approved wat reshape the existing manhole invert flow. The cost to connecting to exist incidental to the project.
- Contractor shall limit the extent of and weekends to less than 50 feet.
- Contractor shall provide positive drainage away from all manhole covers.
- The Contractor shall prevent any construction debris from entering the existing sanitary sewer during construction.
- The Contractor shall be responsible for maintaining continuous flow of sewage through construction. Contractors proposed method for maintaining sewage flow shall be submitted and approved by the Sewer Maintenance Division (316-268-4073) prior to starting and by-passing of sewage flows.
- Any over excavation from manhole and pipe removal shall be backfilled with AB-3 compacted to 90-95% ASTM D698.
- The Contractor shall protect from damage and support existing utilities through construction as approved by the utility owner and the Engineer at the contractors expense.

NOTE: Preliminary release 5/11/2018.
For connection purposes only.
McCullough Excavation - Contractor
J. Brand - City of Wichita, Field Project Engineer
T. Dvorak - City of Wichita, Inspector
Stubs
Release Date: 5/11/2018
Completion Date:
pdf: 5/14/2018 apr

Lateral 17, Main 4, SWI SANITARY SEWER Cheryl's Hollow Second Addition Lots 5-7 Block 4, Lots 4-6 Block 5, Lots 1-9 Block 8, Lots 10-26 Block 10 CITY OF WICHITA, KANSAS

Gary Janzen, P.E. City Engineer
 Project Number: 468-85233
 OCA: 744454



Vicinity Map

Sheet Index

1	Title Sheet
2	Control Map
3-5	Plan & Profile Line 1
6	Plan & Profile Line 2
7	Plan & Profile Line 3 & 4
8-9	Standard Sanitary Details
10	Erosion Control Plan
11-15	Erosion Control Details (attached or available on the City's website)
16	Copy of Plat

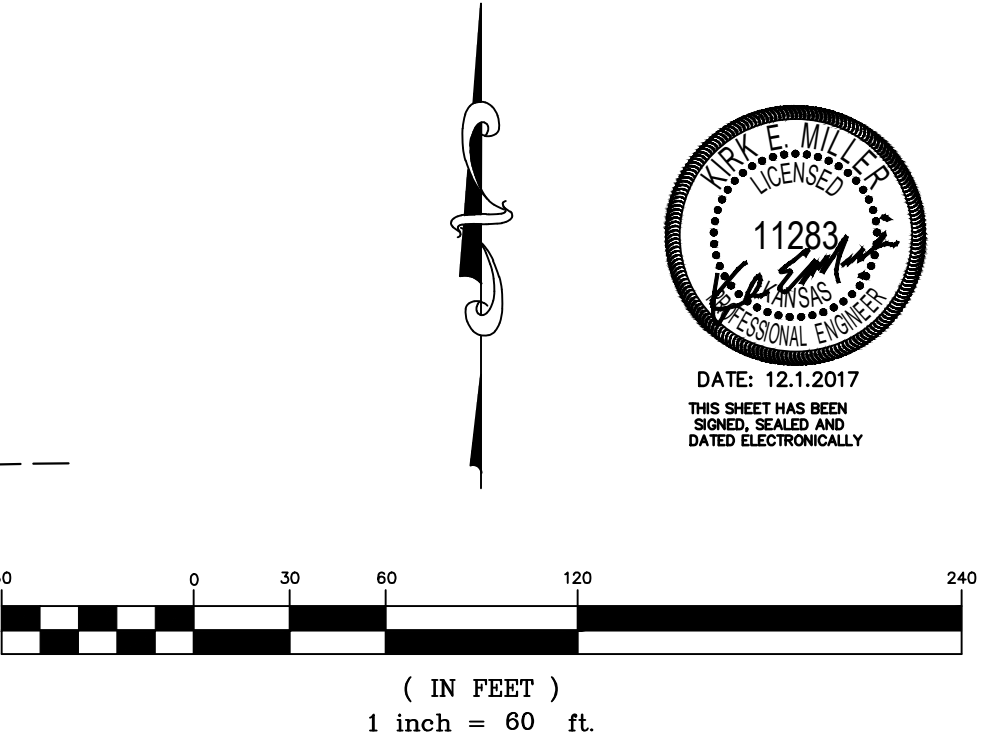
Benefit Districts:

Benefit Area

Benchmarks

BM#1:
Chiseled Square on the Top of Curb on the South Side of Autumn Ridge, 98' East of the East Line of Cheryl's Hollow 2nd Addition.
Elev. = 1364.26 NAVD88

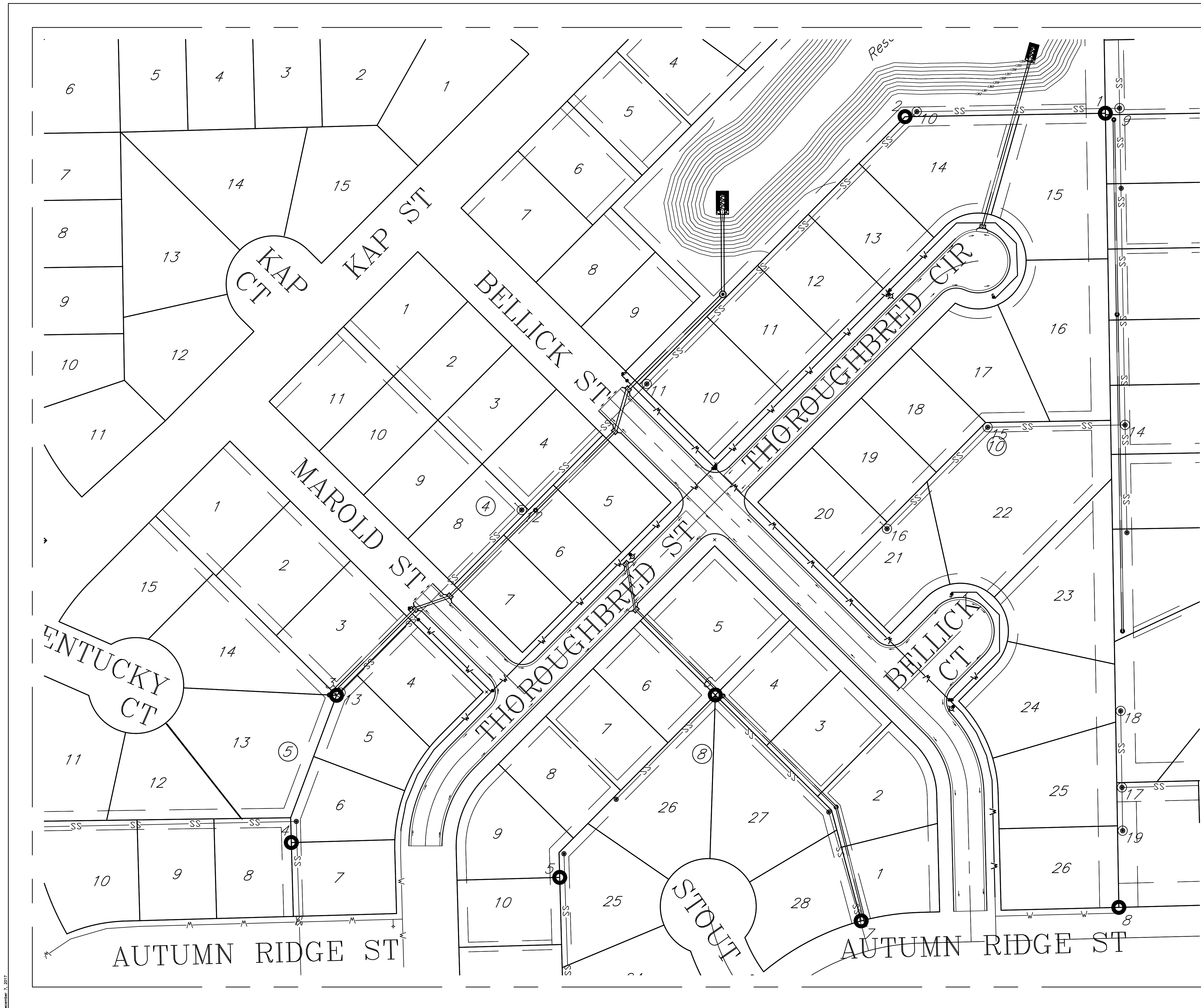
BM#2:
Chiseled Square on the Top of Curb at the West Curb Return at the Northeast Corner of Hunter's View and Stout.
Elev. = 1364.78 NAVD88



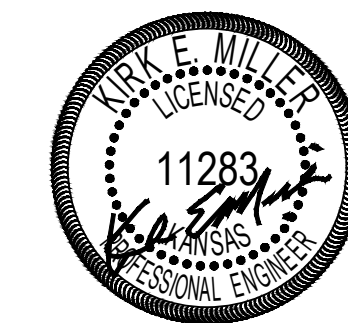
Developer: Progressive Opportunities, LLC
 4313 N. 119th St. W. Maize, KS 67101-9530

December 2017

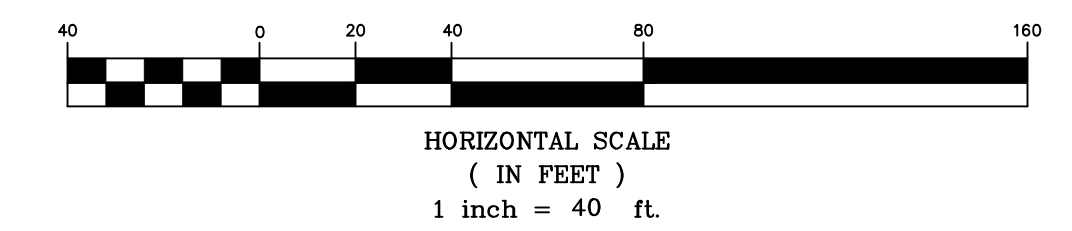
KEMILLER ENGINEERING PA
 117 E. Lewis, Wichita, KS 67202 (316)264-0242



Point #	Northing	Easting	Desc.
1	1695236.22	1600585.65	Control Point
2	1695232.67	1600377.00	Control Point
3	1694629.54	1599784.74	Control Point
4	1694476.11	1599737.61	Control Point
5	1694439.83	1599908.39	Control Point
6	1694629.85	1599863.31	Control Point
7	1694394.47	1599785.90	Control Point
8	1694408.57	1599738.10	Control Point
9	1645241.47	1600600.44	Sta 0+00.00 Line 1
10	1695237.94	1600392.78	Sta 2+11.26 Line 1
11	1694952.34	1600109.66	Sta 6+10.85 Line 1
12	1694820.59	1599979.05	Sta 7+95.85 Line 1
13	1694630.63	1599791.74	Sta 10+63.85 Line 1
14	1694911.38	1600606.13	Sta 0+00.00 Line 2
15	1694908.95	1600463.03	Sta 1+43.12 Line 2
16	1694803.16	1600358.15	Sta 2+92.09 Line 2
17	1694533.57	1600602.95	Sta 0+00.00 Line 3
18	1694613.29	1600601.57	Sta 0+79.73 Line 3
19	1694488.48	1600603.69	Sta 0+45.09 Line 4



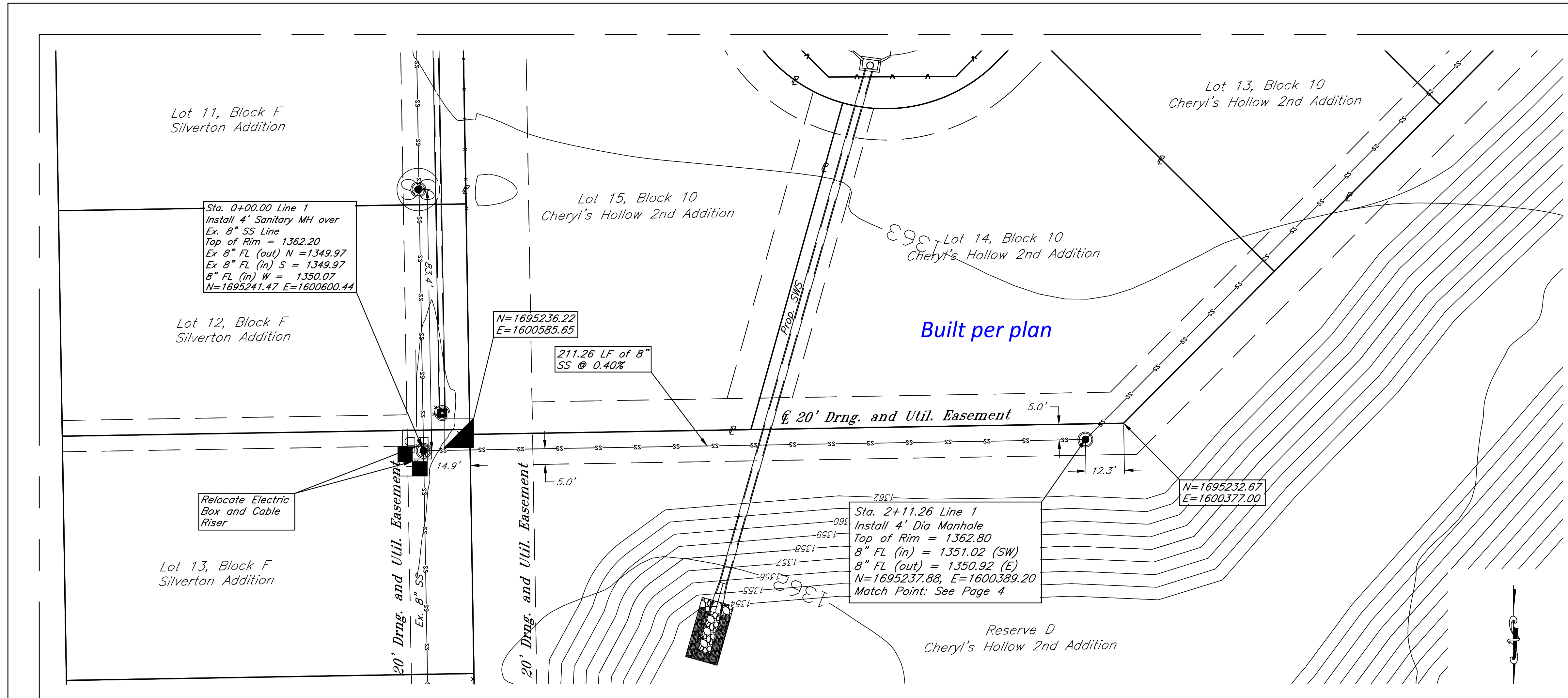
DATE: 12.1.2017
 THIS SHEET HAS BEEN
 SIGNED, SEALED AND
 DATED ELECTRONICALLY



Cheryl's Hollow 2nd Addition - Phase 2
Control Map
 Wichita, Kansas

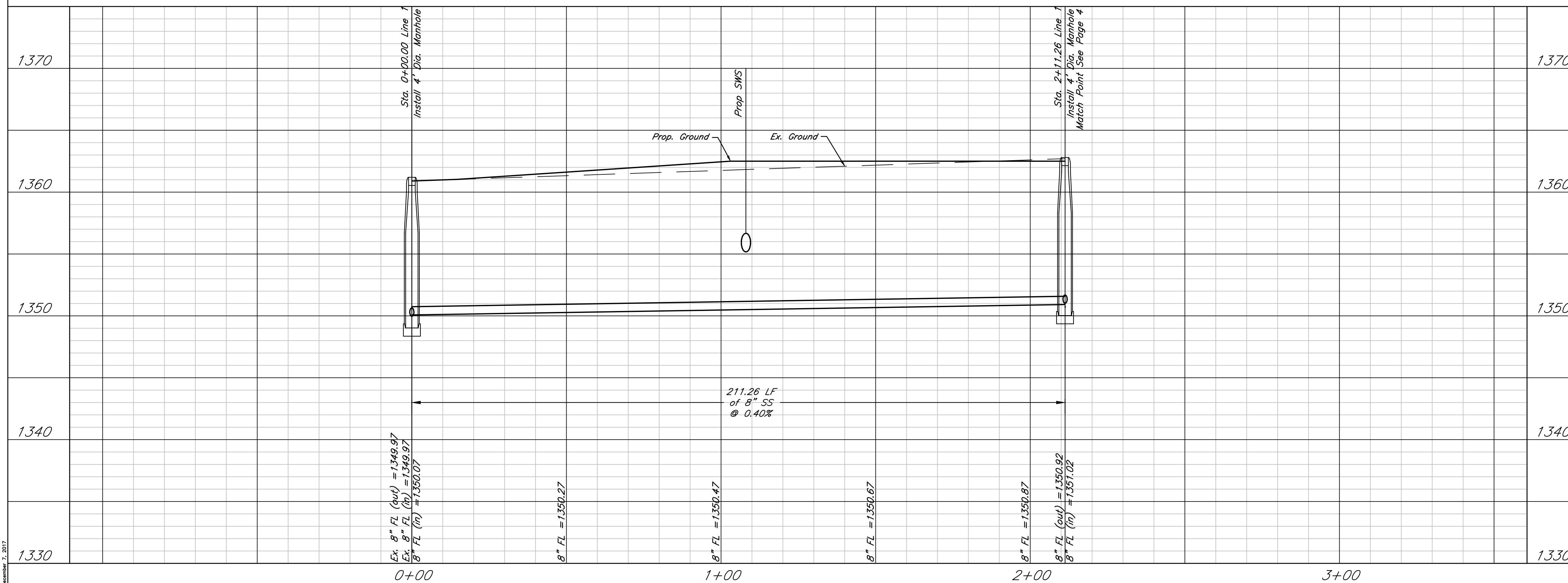
 117 E. Lewis, Wichita, KS 67202 (316)264-0242	PROJECT NUMBER			SHEET 2
	KEM NO. 17104	FILE	DATE 12/2017	
DESIGN KM	DRAWN AHS	REVISED		

December 7, 2017

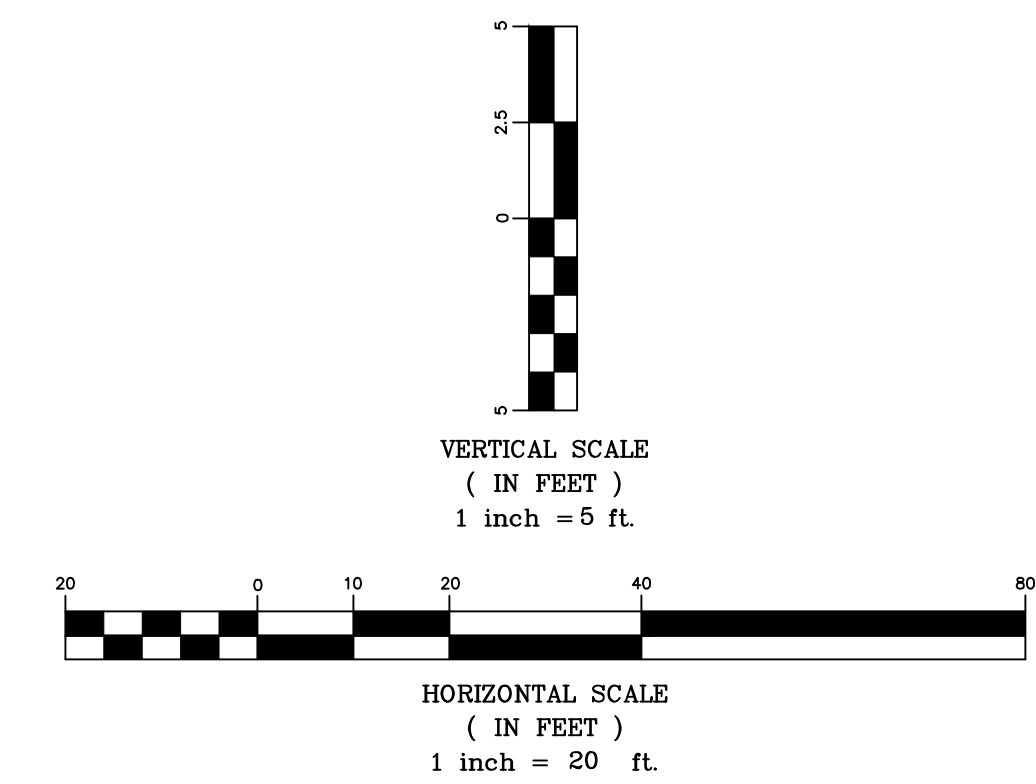


Note:

1. Coordinate with Property Owner Re-sod
2. Coordinate with Electric Company and telephone relocation to set sta 0+00.00 Manhole



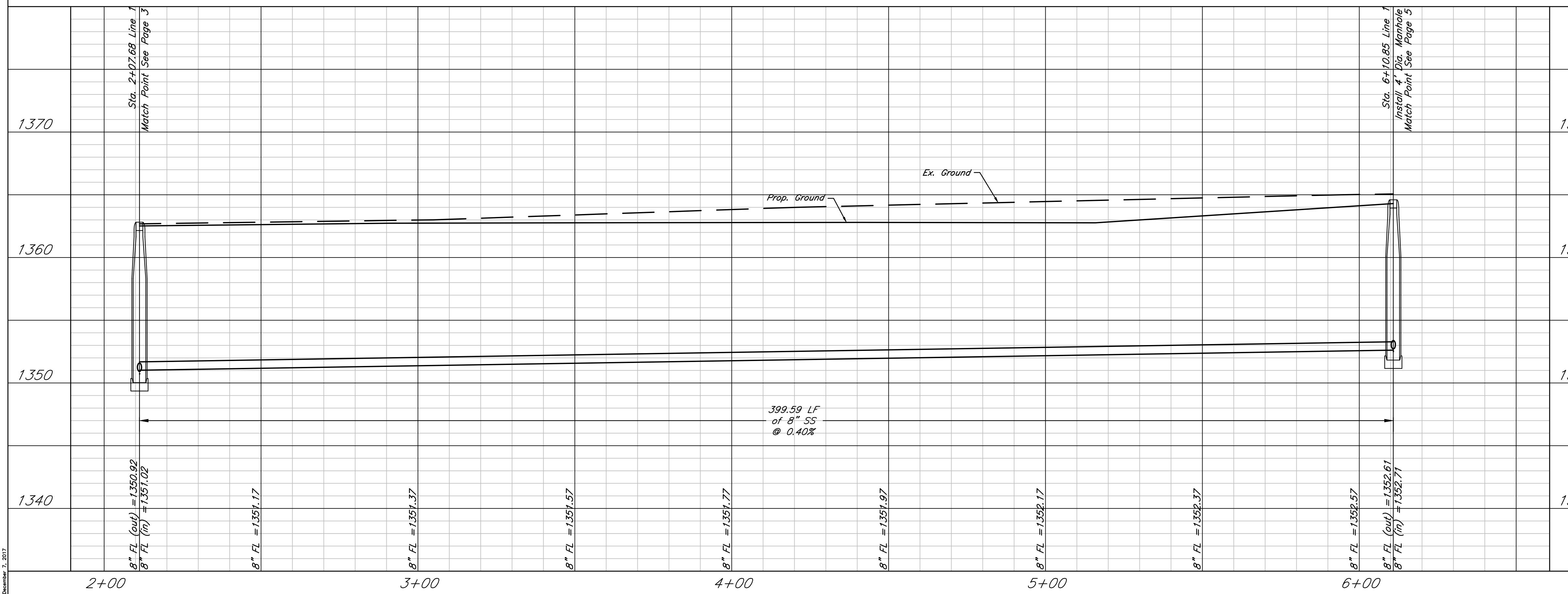
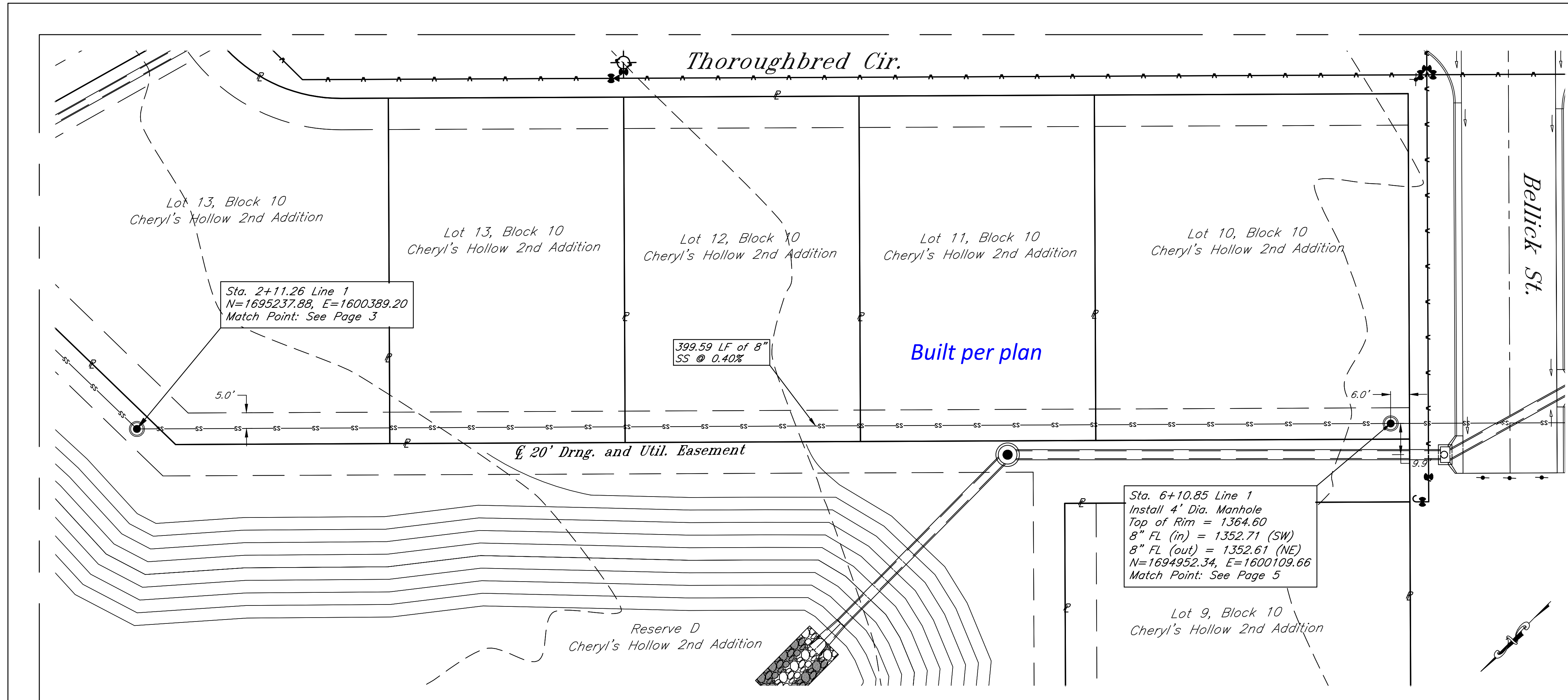
DATE: 12.7.2017
THIS SHEET HAS BEEN SIGNED, SEALED AND DATED ELECTRONICALLY



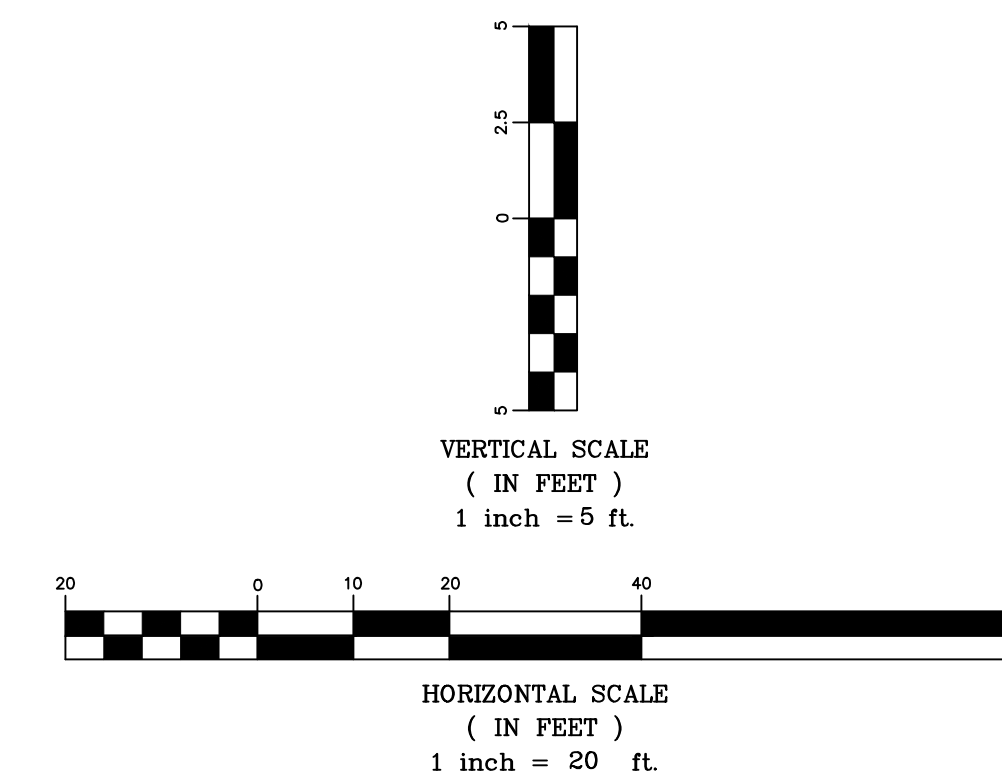
Cheryl's Hollow 2nd Addition - Phase 2
Sanitary Sewer, Line 1
Wichita, Kansas

	PROJECT NUMBER			SHEET 3
	KEM NO. 17104	FILE	DATE 12/2017	
DESIGN KM	DRAWN AHS	REVISED		

December 7, 2017

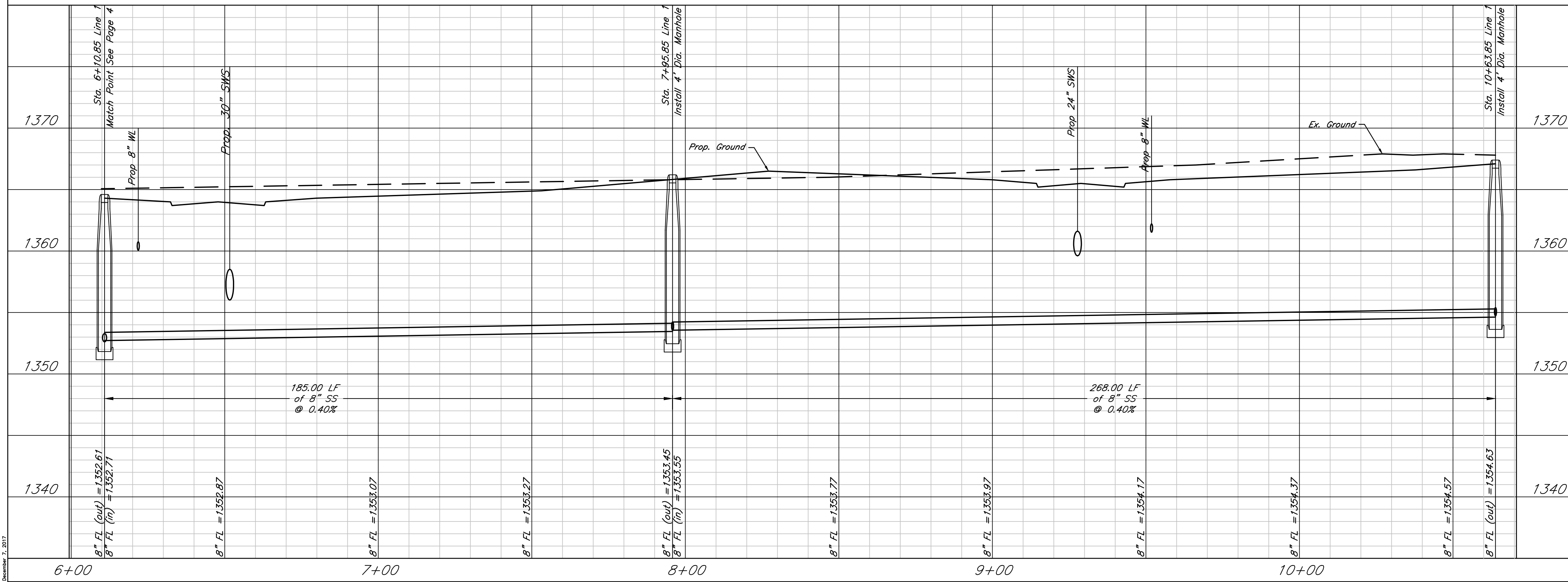
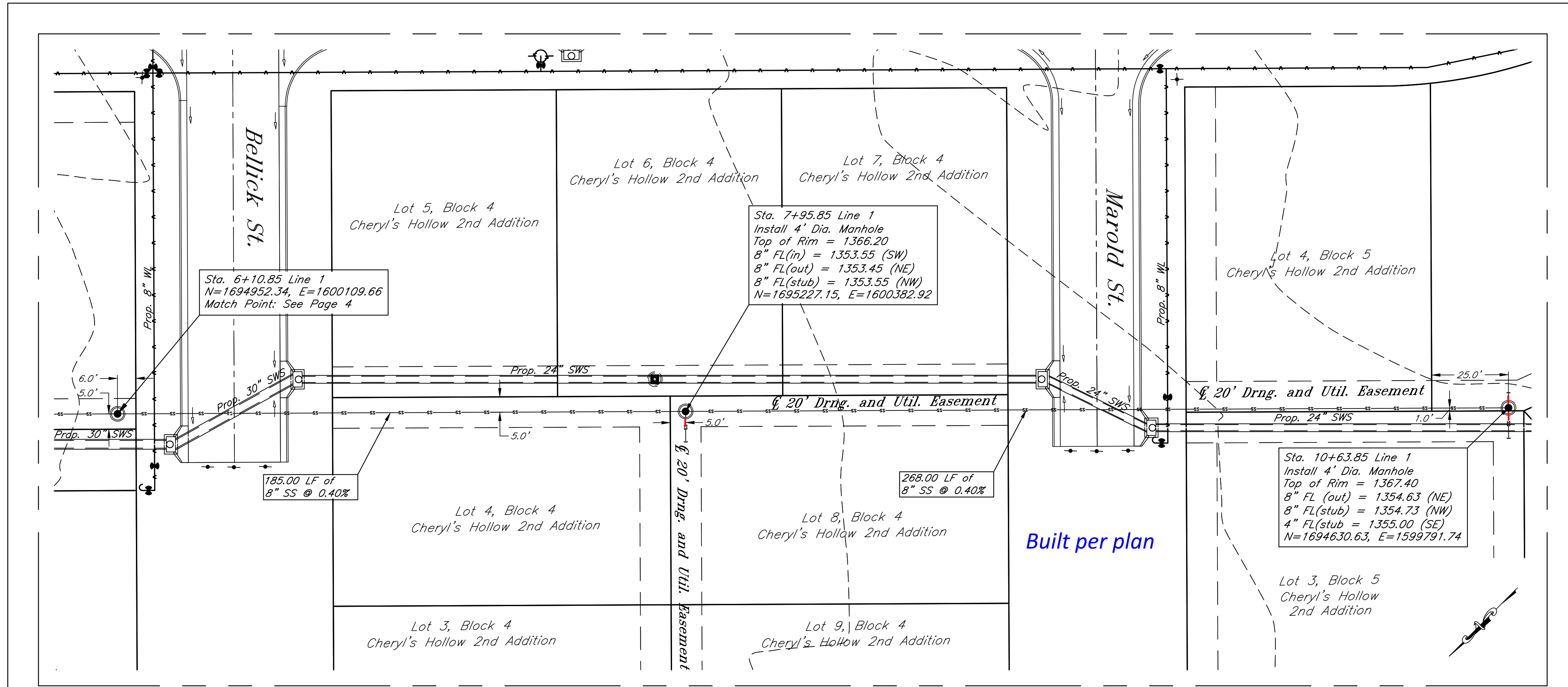


DATE: 12.7.2017
THIS SHEET HAS BEEN
SIGNED, SEALED AND
DATED ELECTRONICALLY

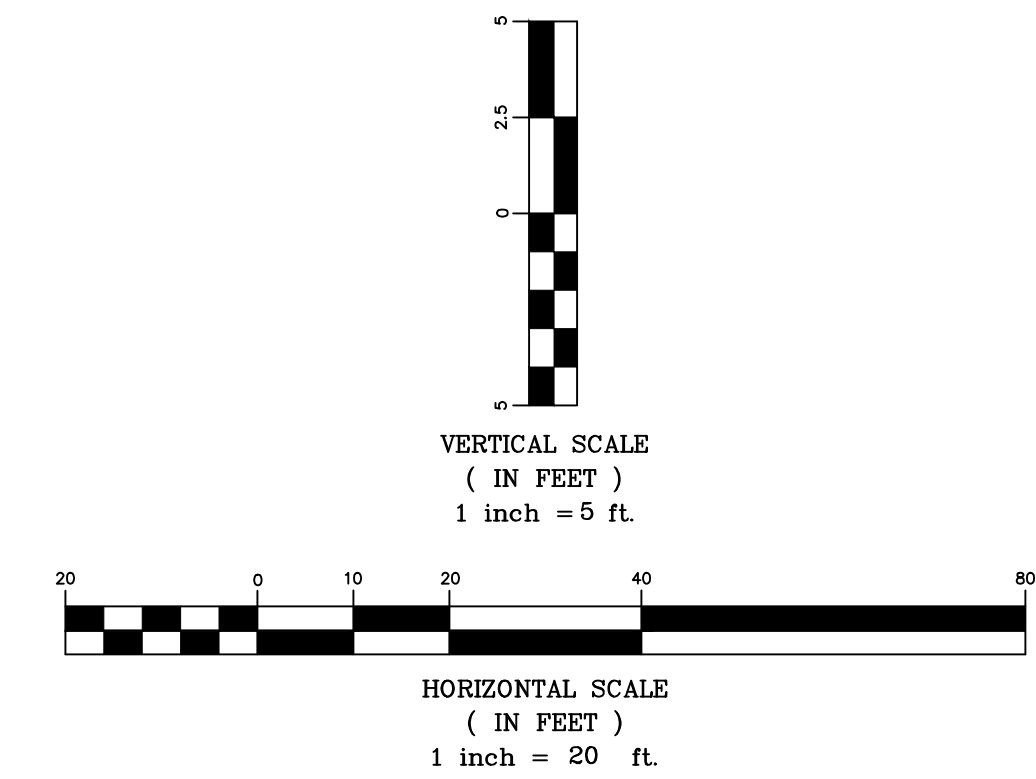


Cheryl's Hollow 2nd Addition - Phase 2
Sanitary Sewer, Line 1
Wichita, Kansas

 117 E. Lewis, Wichita, KS 67202 (316)264-0242	PROJECT NUMBER			
	KEM NO. 17104	FILE	DATE 12/2017	SHEET 4
DESIGN KM	DRAWN AHS	REVISED		



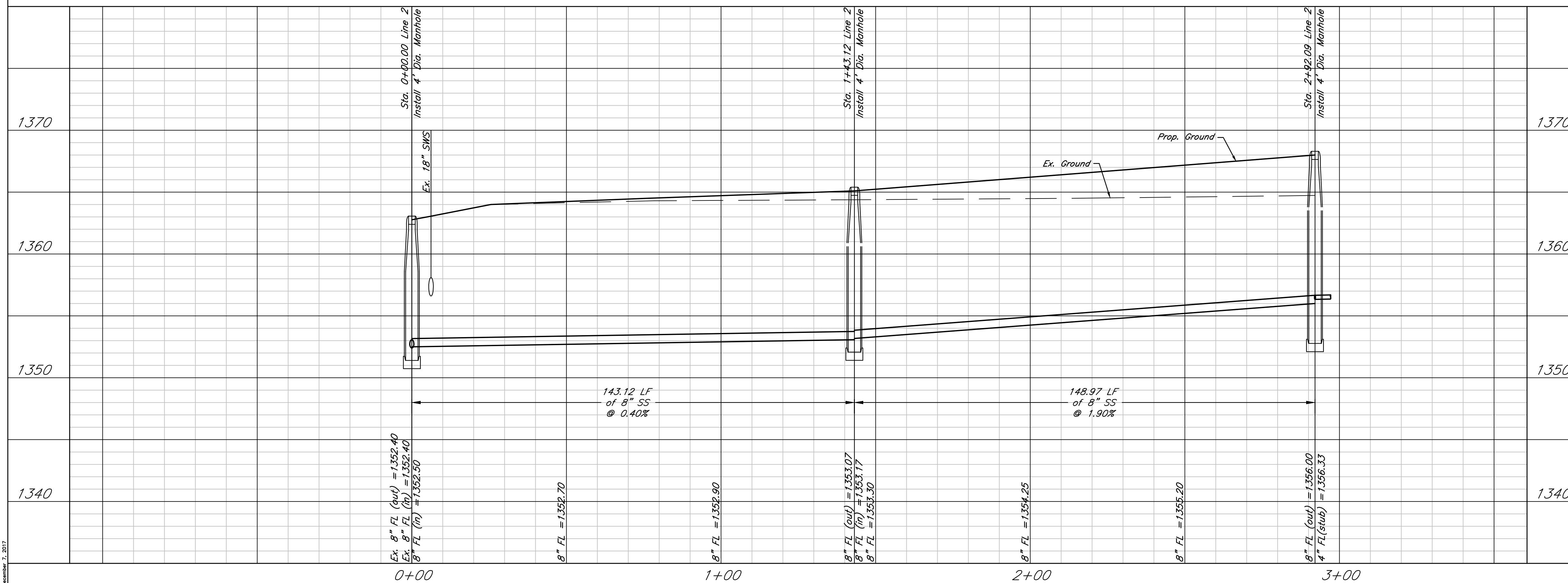
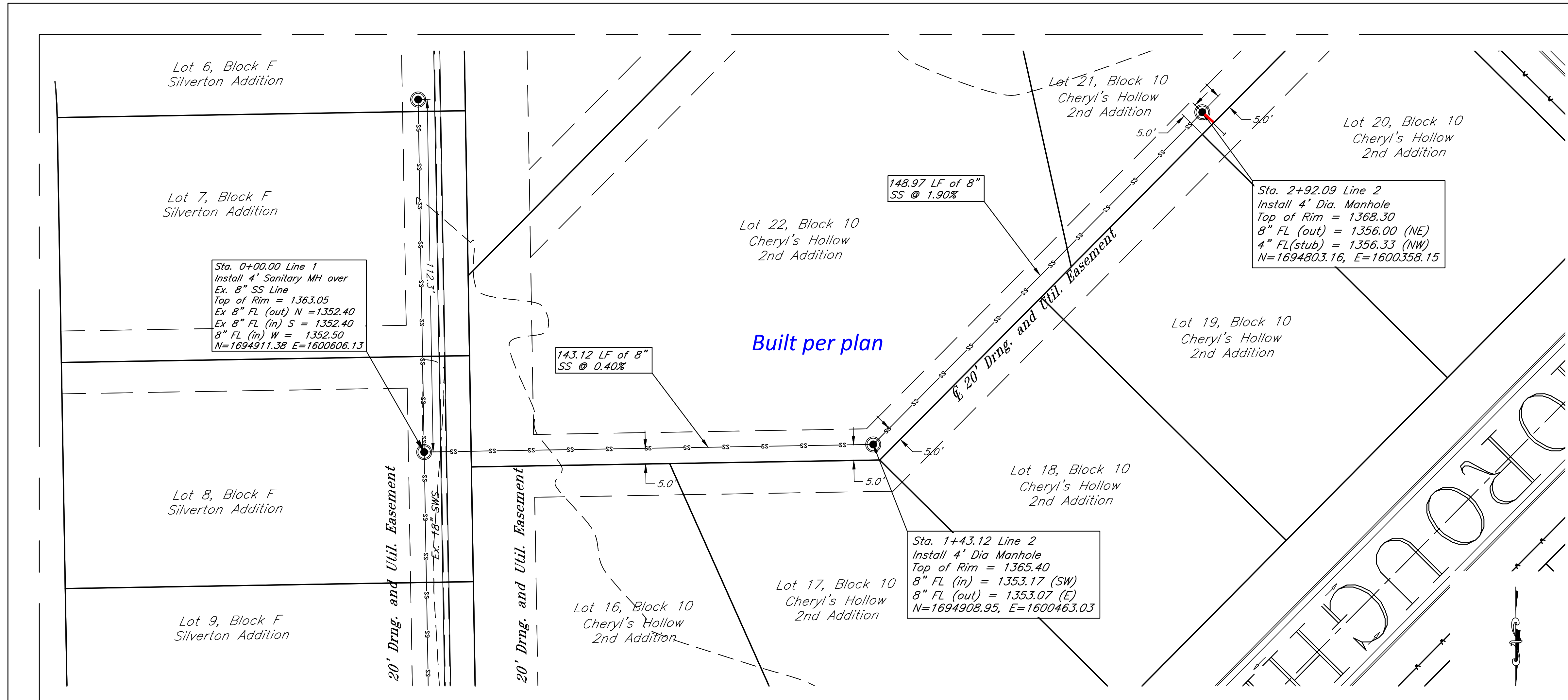
DATE: 12.7.2017
THIS SHEET HAS BEEN
SIGNED, SEALED AND
DATED ELECTRONICALLY



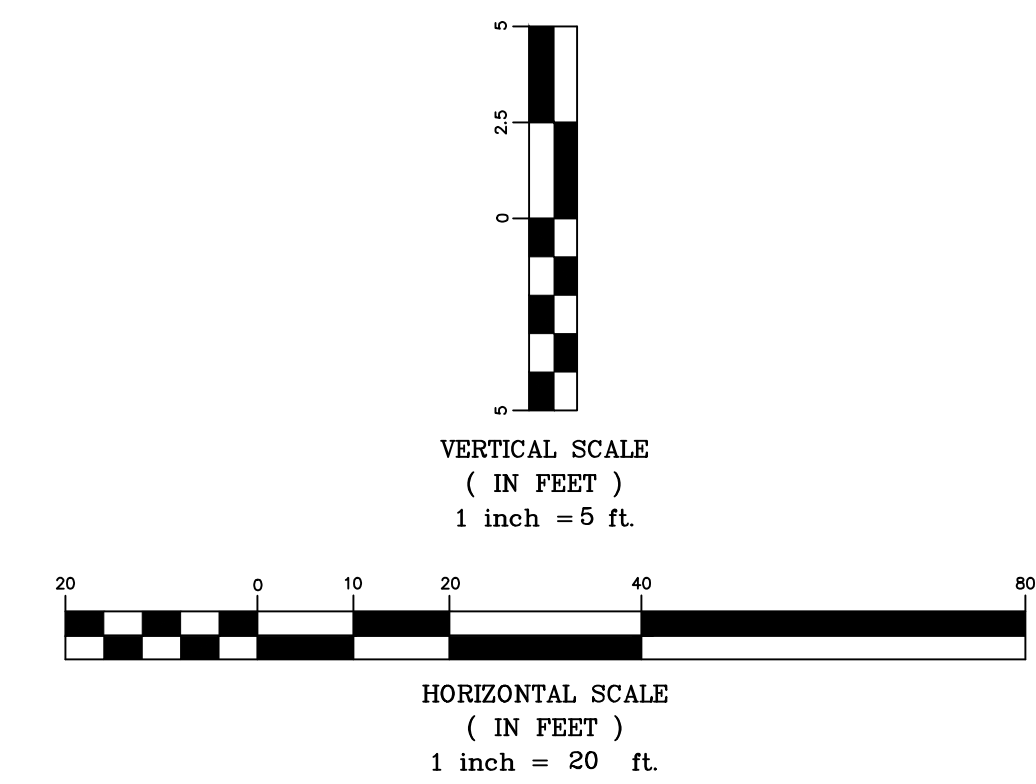
Cheryl's Hollow 2nd Addition - Phase 2
Sanitary Sewer, Line 1
Wichita, Kansas

	PROJECT NUMBER			
	KEM NO. 17104	FILE	DATE 12/2017	SHEET 5
DESIGN KM	DRAWN AHS	REVISED		

Note: Coordinate with Property Owner Re-sod



DATE: 12.7.2017
THIS SHEET HAS BEEN SIGNED, SEALED AND DATED ELECTRONICALLY

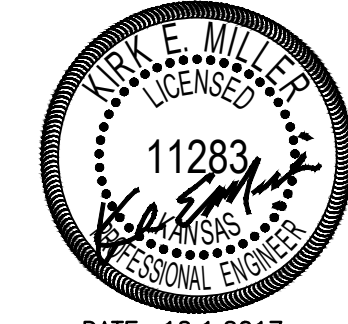
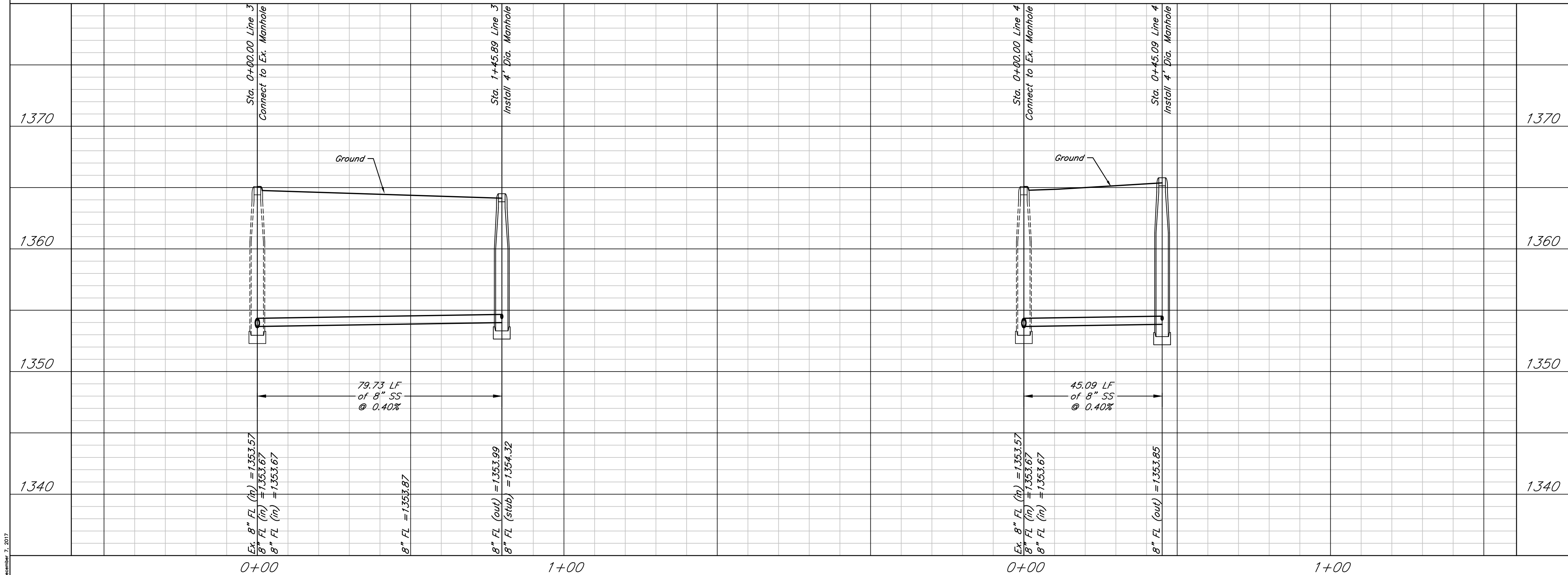
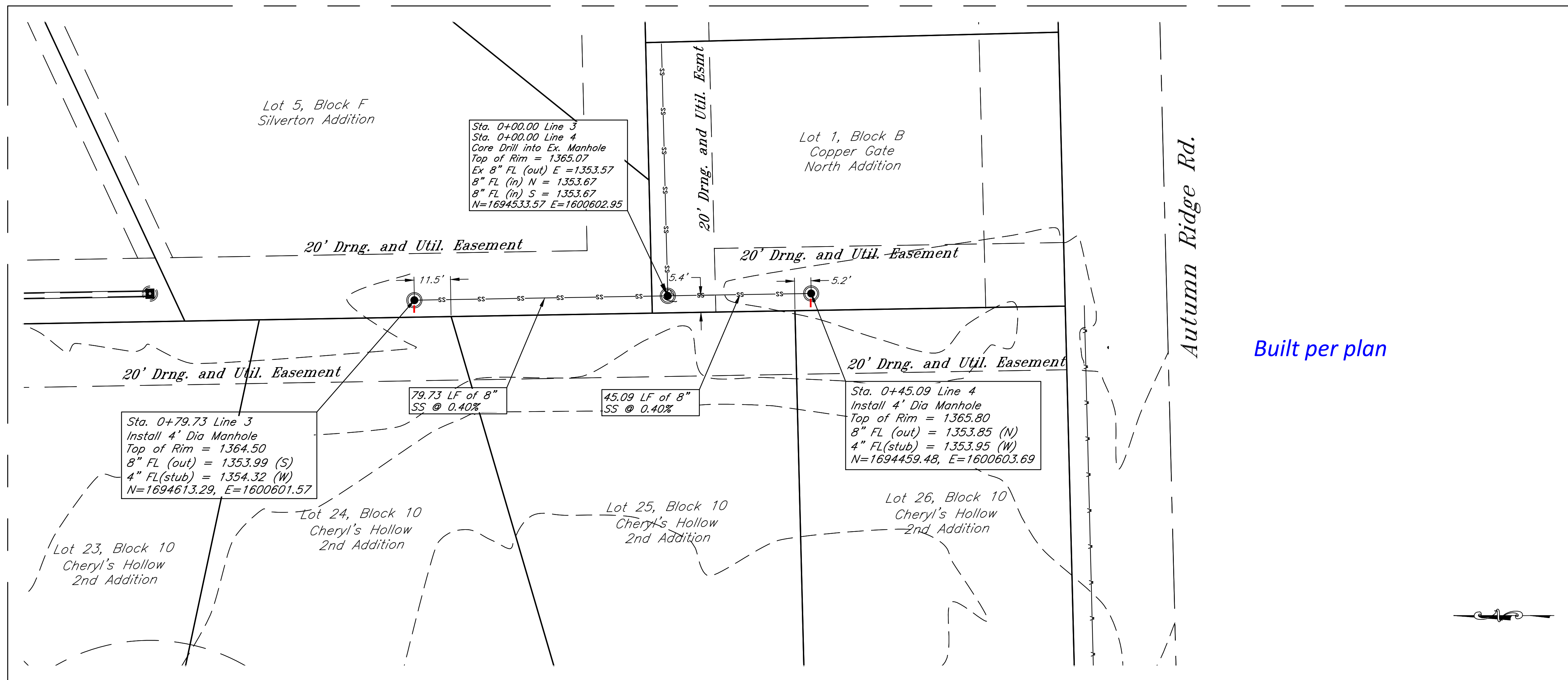


Cheryl's Hollow 2nd Addition - Phase 2
Sanitary Sewer, Line 2
Wichita, Kansas

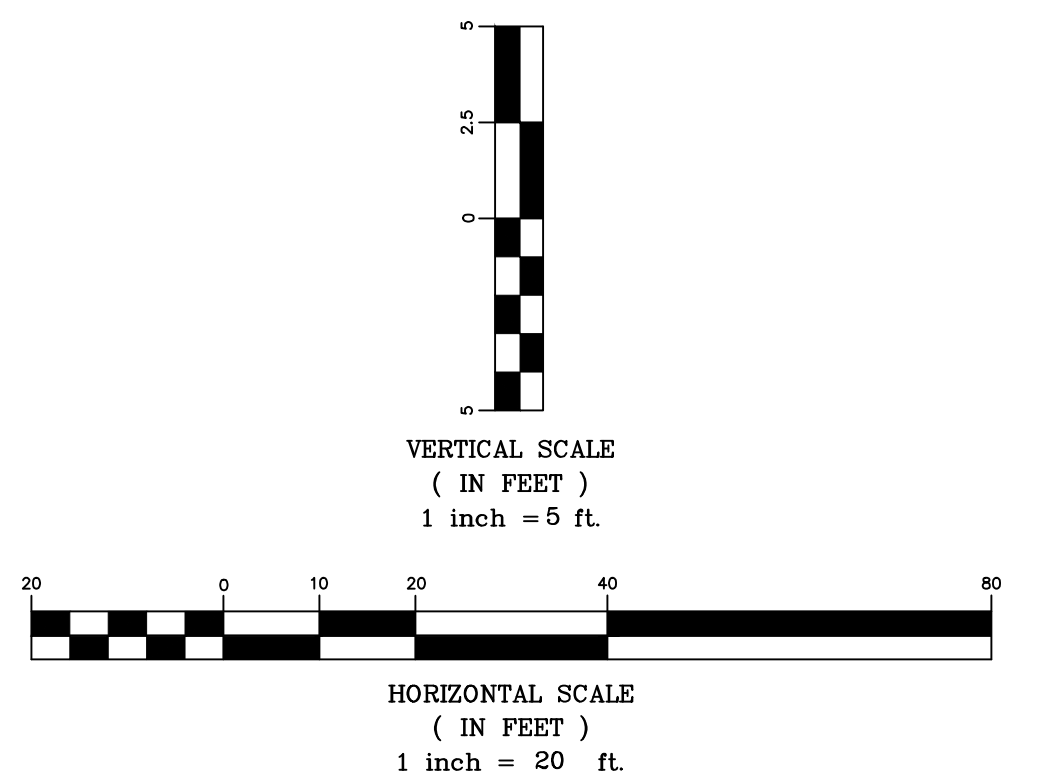
 117 E. Lewis, Wichita, KS 67202 (316)264-0242	PROJECT NUMBER			SHEET 6
	KEM NO. 17104	FILE	DATE 12/2017	
DESIGN KM	DRAWN AHS	REVISED		

December 7, 2017

Note: Coordinate with Property Owner Re-sod



DATE: 12.1.2017
THIS SHEET HAS BEEN SIGNED, SEALED AND DATED ELECTRONICALLY



Cheryl's Hollow 2nd Addition - Phase 2
Sanitary Sewer, Line 3 & 4
Wichita, Kansas

 117 E. Lewis, Wichita, KS 67202 (316)264-0242	PROJECT NUMBER			
	KEM NO. 17104	FILE	DATE 12/2017	SHEET 7
DESIGN KM	DRAWN AHS	REVISED		

December 7, 2017

