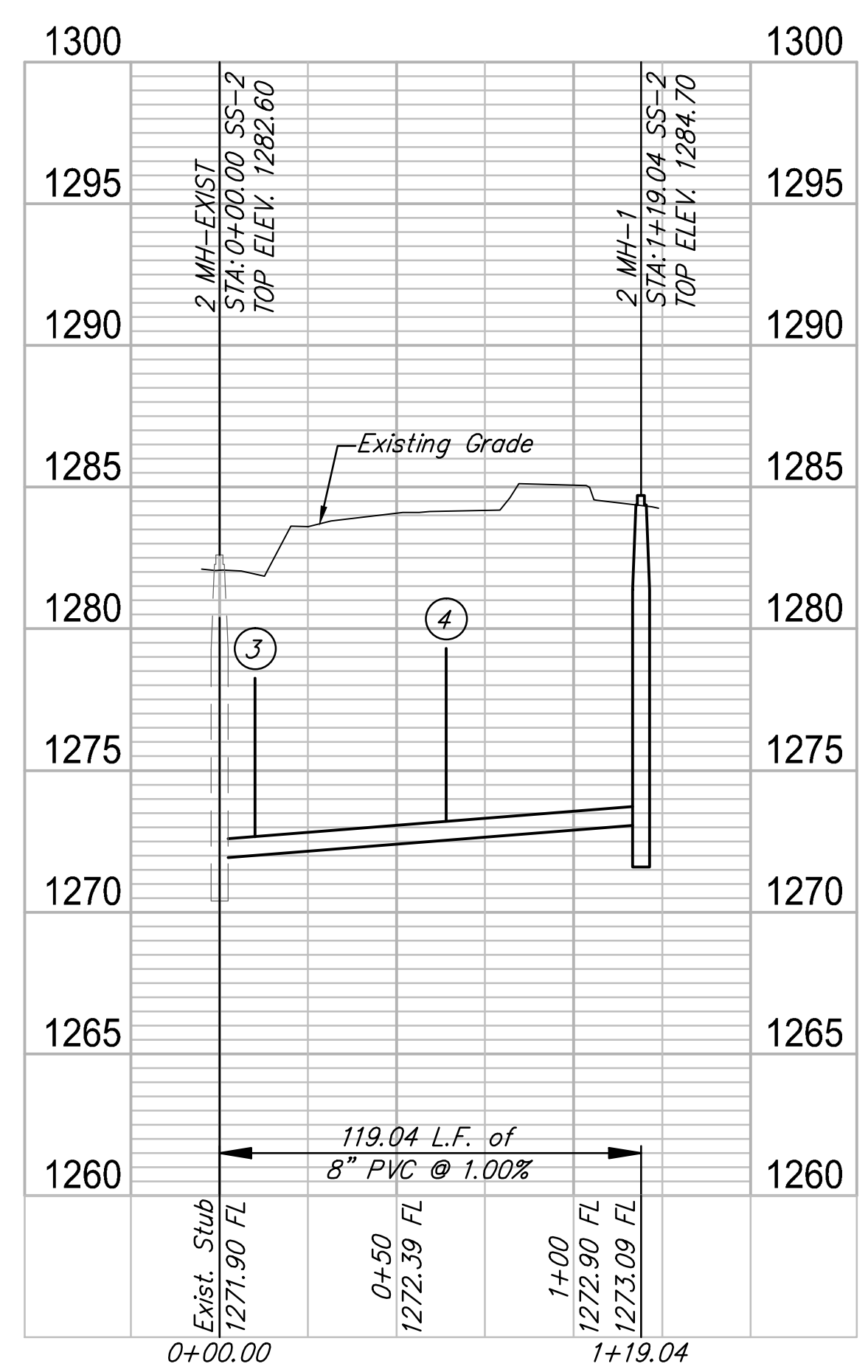
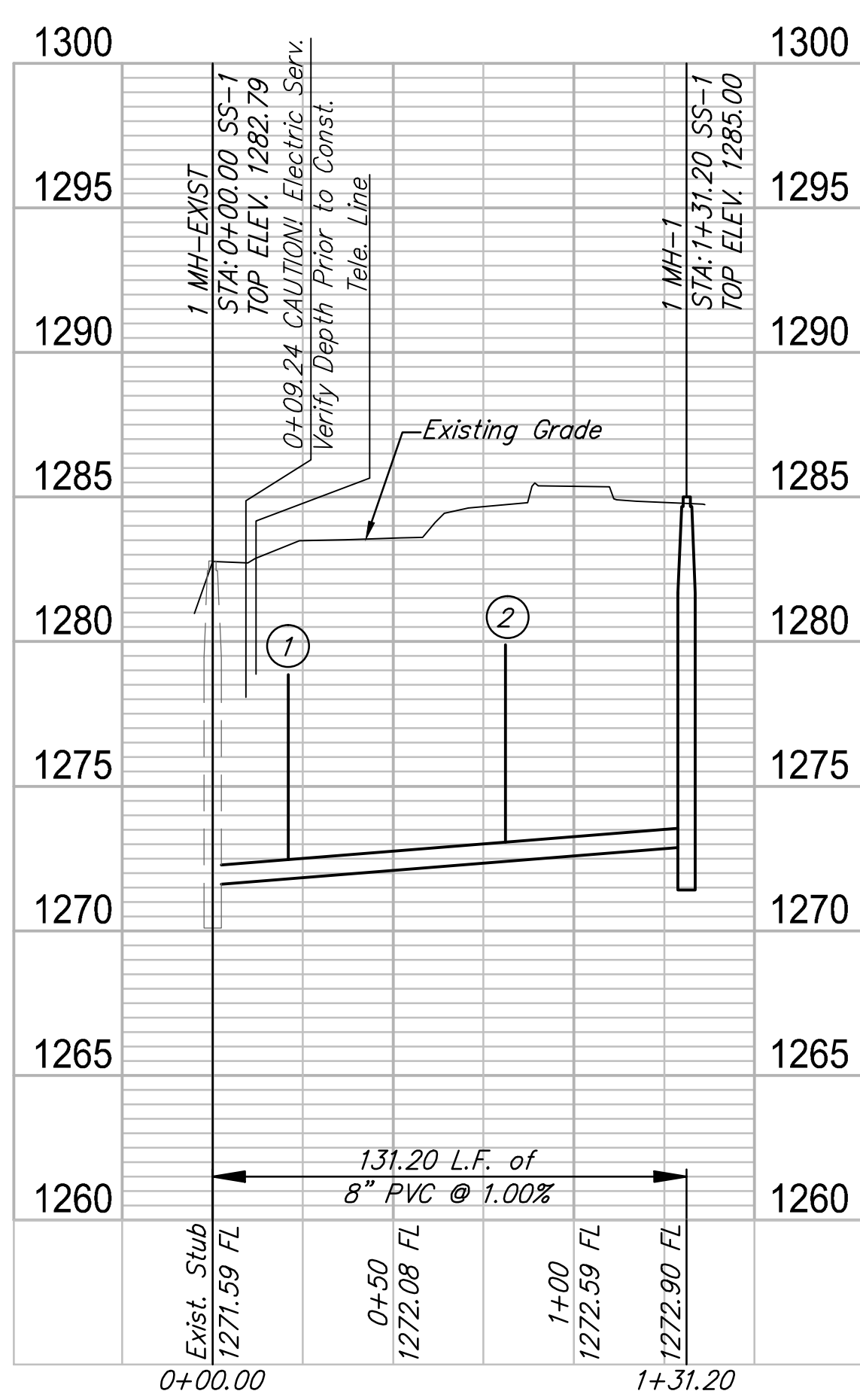
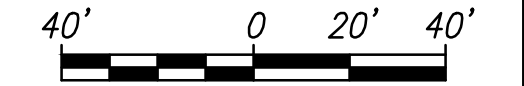
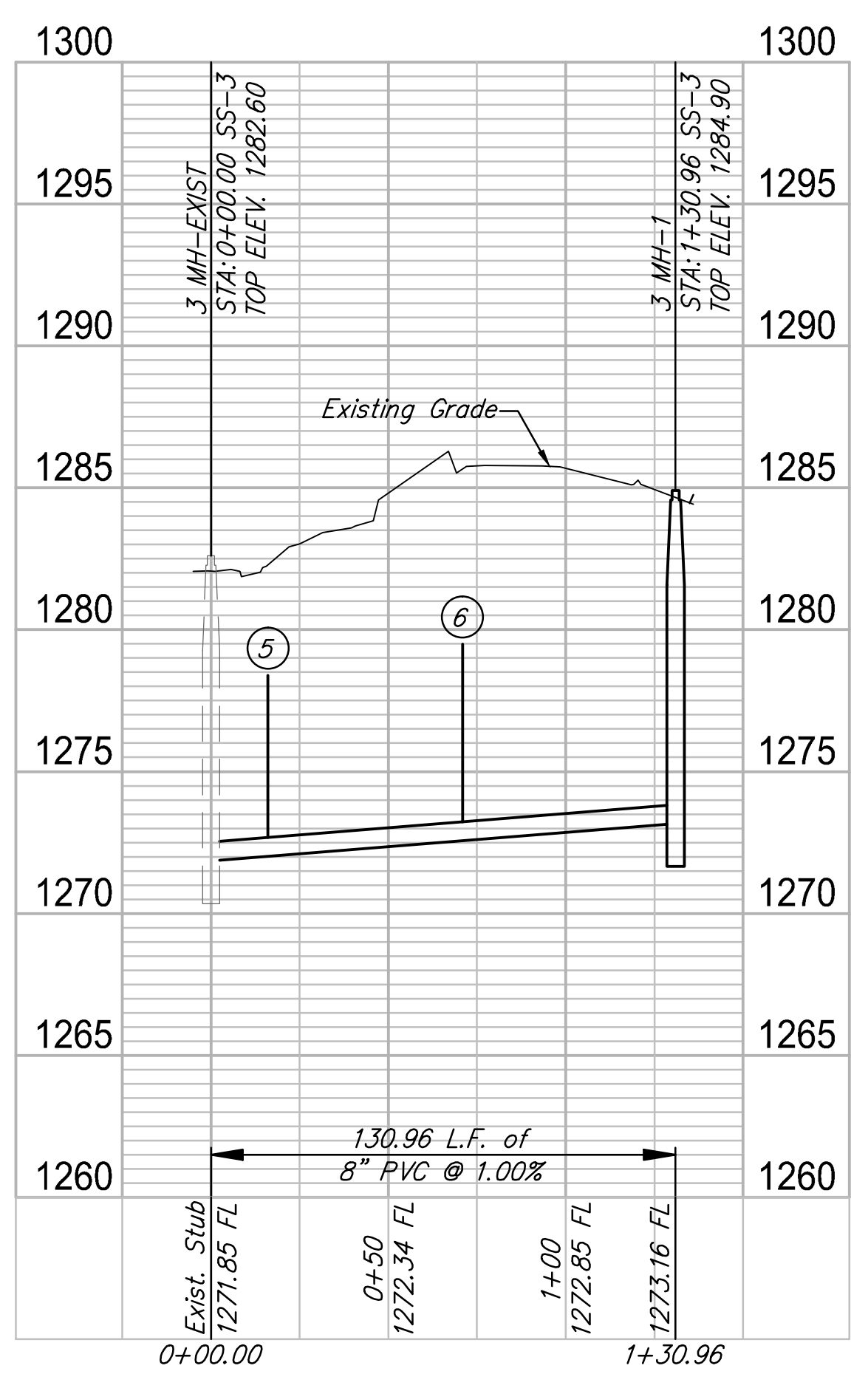


BUILT PER PLAN

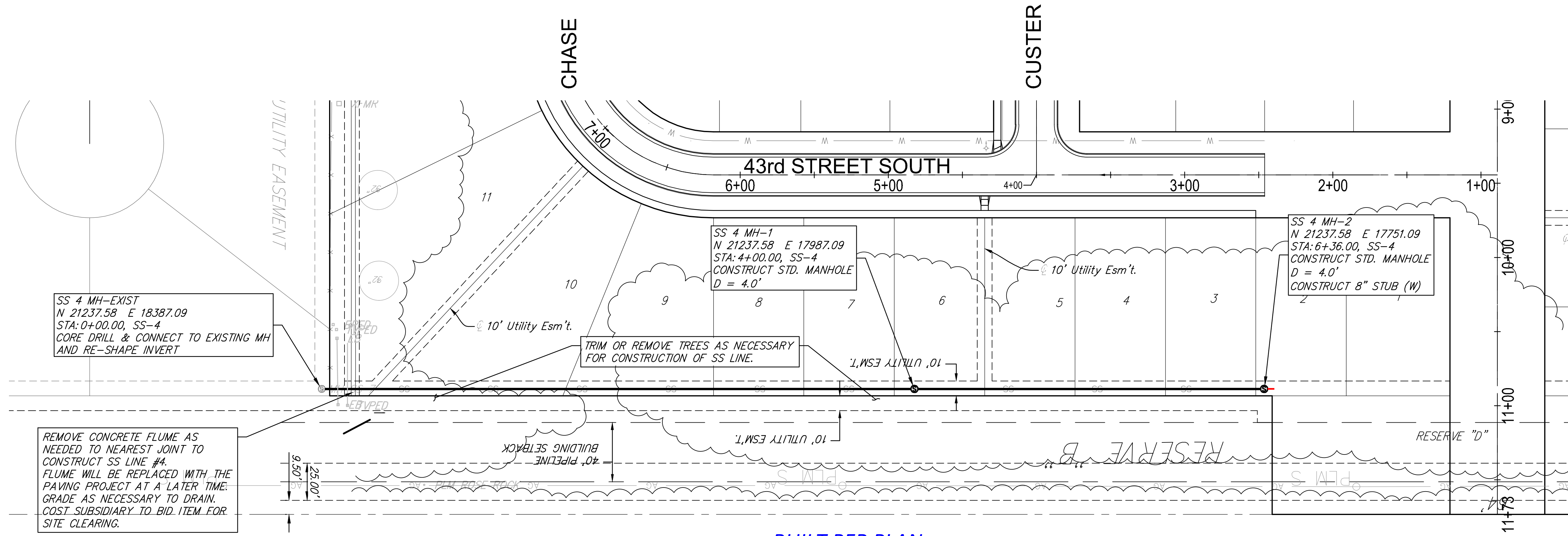
Distance from Main to Riser	Distance from		NUMBER	TYPE	SERVING			FOR INFORMATION ONLY		
	Upstream MH	Downstream MH			LOT NO.	BLOCK NO.	LINE NO.	APPROX. LENGTH 4" PIPE		
								STATION/DIRECTION	VERTICAL	HORIZONTAL
4.6' Lt.	110.2'	21'	1	8"X4" Tee	15	5	1	0+21 Left	6.40	4.6
4.6' Lt.	50.2'	81'	2	8"X4" Tee	16	5	1	0+81 Left	6.80	4.6
5.5' Rt.	109'	10'	3	8"X4" Tee	14	6	2	0+10 Right	5.60	5.5
5.5' Rt.	55'	64'	4	8"X4" Tee	13	6	2	0+64 Right	6.10	5.5
5.5' Lt.	115'	16'	5	8"X4" Tee	15	6	3	0+16 Left	5.70	5.5
5.5' Lt.	44'	71'	6	8"X4" Tee	16	6	3	0+71 Left	6.30	5.5



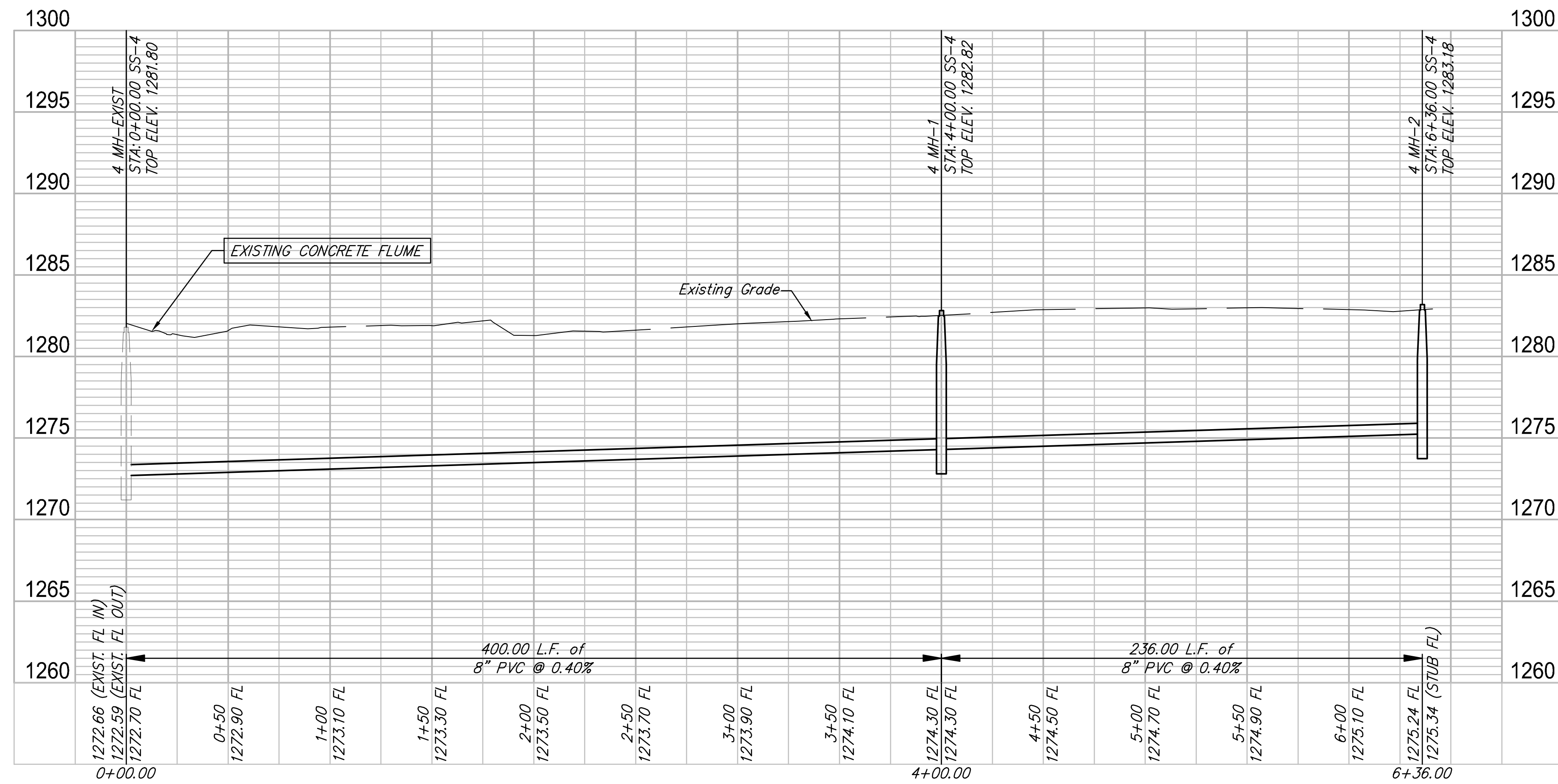
CONTRACTOR SHALL ADJUST EXISTING MANHOLE TOP. SEE SHEET NO. 8 FOR LOCATION.



PROJECT NUMBER: 468-65230
 DRAWING FILE: SS Lines 1-3
 DESIGN: EG
 DRAWN: DS
 REVIEW: 8/29/2017
 DATE: 9-13-2017
Legacy 3rd Addition - Phase 3
SS Lines 1-3
 Wichita, Kansas
 RB JOB: 4893E
 SHEET: 2 OF 16



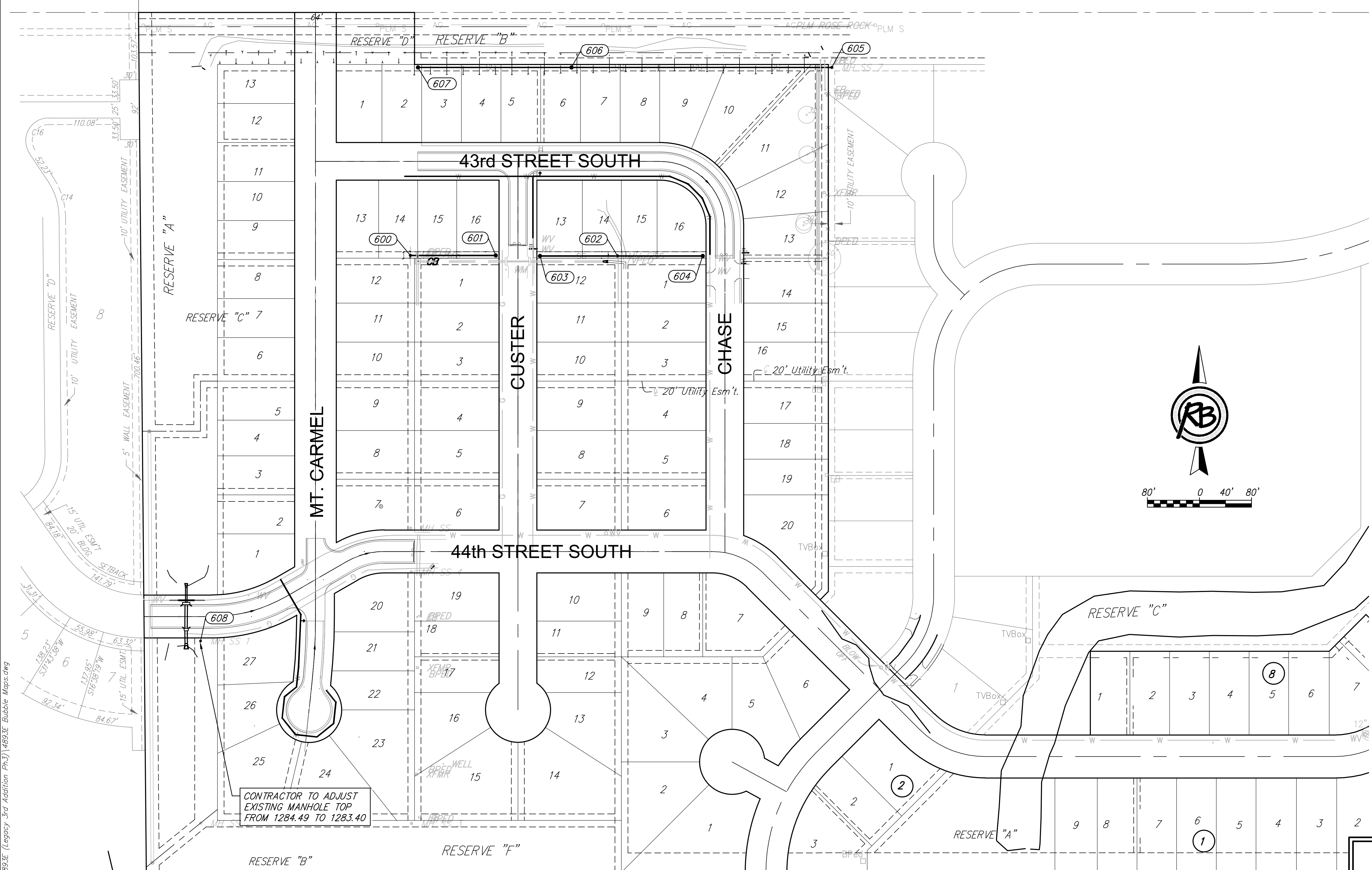
BUILT PER PLAN




CONTRACTOR SHALL ADJUST EXISTING MANHOLE TOP. SEE SHEET NO. 8 FOR LOCATION.

RUGGLES BOHM
 PROJECT NUMBER: 468-65230
 DESIGN: EG
 DRAWING FILE: SS Line 4 (SS Line 4)
 REVIEW: 8/29/2017
 DATE: 9-13-2017
 DRAWN: DS
Legacy 3rd Addition - Phase 3
SS Line 4
 Wichita, Kansas
 RB JOB: 4893E
 OF 16

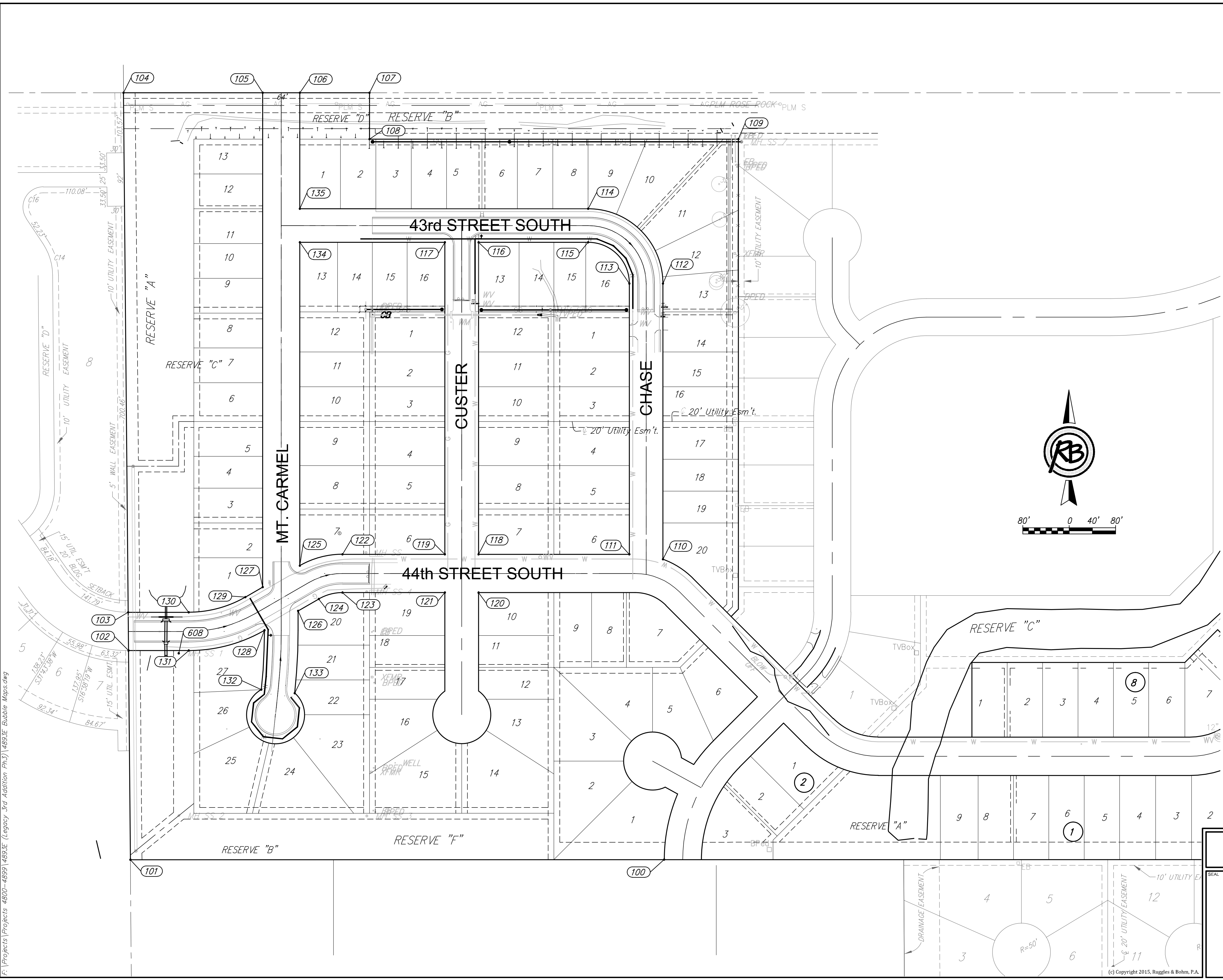
Point Table			
Point #	Northing	Easting	Description
600	20948.50	17739.50	EXIST MH
601	20948.50	17870.70	MH 1-1
602	20947.69	18057.73	EXIST MH
603	20947.69	17938.70	MH 2-1
604	20947.69	18188.70	MH 3-1
605	21237.58	18387.09	EXIST MH
606	21237.58	17987.09	MH 4-1
607	21237.58	17751.09	MH 4-2
608	20355.40	17416.93	EXIST MH



F:\Projects\Projects 4800-4899\4893E (Legacy 3rd Addition Ph.3)\4893E Bubble Maps.dwg

Legacy 3rd Addition - Phase 3 SS BUBBLE MAP			DATE 9-13-2017
 RUGGLES & BOHM			DESIGN EG
<small>ENGINEERING SURVEYING LANDSCAPE ARCHITECTURE GOVERNMENT 924 NORTH MAIN WICHITA, KANSAS 67203 P (316) 264-8008 F (316) 264-4621 WWW.RUGGLESANDBOHM.COM</small>			DRAWN DS
<small>PROJECT NUMBER 468-85230</small>			REVIEW 8/29/2017
<small>RB JOB NO. 4893E</small>			SHEET 8
<small>DWG. SCALE ...</small>			OF 16
<small>DRAWING FILE 4893E Bubble Maps [SS BUBBLE MAP]</small>			


(c) Copyright 2015, Ruggles & Bohm, P.A.



Point Table			
Point #	Northing	Easting	Description
100	19999.75	18253.71	BLOCK COR
101	19999.62	17333.50	ADDITION COR
102	20360.18	17330.28	BLOCK COR
103	20426.18	17329.69	BLOCK COR
104	21322.18	17321.70	ADDITION COR
105	21322.18	17561.70	BLOCK COR
106	21322.18	17625.70	BLOCK COR
107	21322.18	17745.70	ADDITION COR
108	21242.18	17745.70	BLOCK COR
109	21242.18	18381.70	ADDITION COR
110	20517.75	18251.70	BLOCK COR
111	20526.18	18193.70	BLOCK COR
112	20993.18	18251.70	PC
113	20993.18	18193.70	PC
114	21122.18	18122.70	PT
115	21064.18	18122.70	PT
116	21064.18	17933.70	BLOCK COR
117	21064.18	17875.70	BLOCK COR
118	20526.18	17933.70	BLOCK COR
119	20526.18	17875.70	BLOCK COR
120	20460.18	17933.70	BLOCK COR
121	20460.18	17875.70	BLOCK COR
122	20526.18	17699.15	PC
123	20460.18	17699.15	PC
124	20449.23	17658.27	PT
125	20506.63	17625.70	BLOCK COR
126	20428.69	17622.70	BLOCK COR
127	20469.68	17561.70	BLOCK COR
128	20395.20	17564.70	BLOCK COR
129	20452.36	17531.70	PC
130	20426.18	17434.00	PT
131	20360.18	17434.00	PT
132	20292.93	17559.20	PC
133	20286.71	17616.86	PT
134	21064.18	17625.70	BLOCK COR
135	21122.18	17625.70	BLOCK COR

F:\Projects\Projects 4800-4899\4893E (Legacy 3rd Addition Ph.3)\4893E Bubble Maps.dwg

**Legacy 3rd Addition - Phase 3
Bubble-Addition-SS**



**RUGGLES
& BOHM**

ENGINEERING | SURVEYING | LANDSCAPE ARCHITECTURE | GOVERNMENT

924 NORTH MAIN WICHITA, KANSAS 67203 P (316) 264-8008 F (316) 264-4621
WWW.RBKANSAS.COM

DATE: 9-13-2017

DESIGN: EG

DRAWN: DS

REVIEW: DS

SHEET: 15 OF 16

PROJECT NUMBER: 468-85230

RB JOB NO.: 4893E

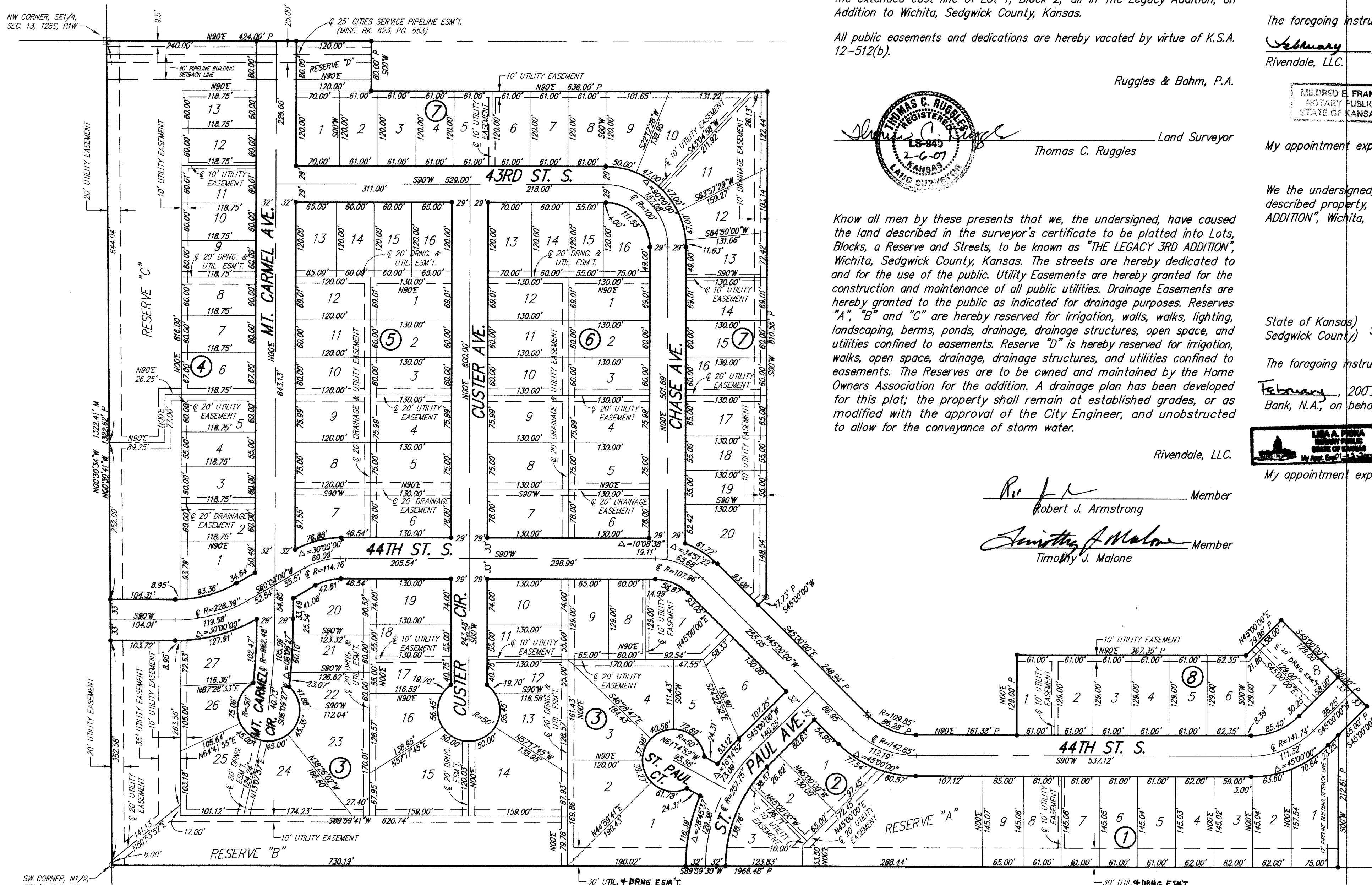
DWG. SCALE: ...

DRAWING FILE: 4893E Bubble Maps [Bubble-Addition-SS]

(c) Copyright 2015, Ruggles & Bohm, P.A.

THE LEGACY 3RD ADDITION

A replat of part of The Legacy Addition,
Wichita, Sedgwick County, Kansas



State of Kansas) SS
Sedgwick County)

We, Ruggles & Bohm, P.A., Land Surveyors in aforesaid county and state, do hereby certify that, under the supervision of the undersigned, we have surveyed and platted "THE LEGACY 3RD ADDITION", Wichita, Sedgwick County, Kansas, and that the accompanying plat is a true and correct exhibit of the property surveyed, described as follows:

Lots 1, 2, 3, 4, 5, 6, 7, 8, 9, 10 and 11, Block 1; Lots 1, 2, 3, 4, 5, 6, 7, 8, 9, 10, 11, 12, 13, 14, 15, 16, 17, 18, 19, 20, 21, 22, 23, 24, 25, 26, 27, 28, 29, 30, 31, 32, 33, 34, 35, 36, 37, 38, 39, 40, 41, 42, 43, 44, 45 and 46, Block 2; Lots 1, 2, 3, 4, 5, 6, 7, 8, 9, 10, 11, 12, 13, 14, 15, 16, 17, 18, 19, 20, 21, 22, 23 and 24, Block 3; Lots 1, 2, 3 and 4, Block 4; Lots 1, 2, 3, 4, 5, 6, 7 and 8, Block 5; Lots 1, 2, 3, 4, 5, 6 and 7, Block 7; and Reserves A, E, F and that part of Reserve B lying west of the extended east line of Lot 1, Block 2; all in The Legacy Addition, an Addition to Wichita, Sedgwick County, Kansas.

All public easements and dedications are hereby vacated by virtue of K.S.A. 12-512(b).

Ruggles & Bohm, P.A.

Thomas C. Ruggles

 Thomas C. Ruggles
 Land Surveyor

Know all men by these presents that we, the undersigned, have caused the land described in the surveyor's certificate to be platted into Lots, Blocks, a Reserve and Streets, to be known as "THE LEGACY 3RD ADDITION", Wichita, Sedgwick County, Kansas. The streets are hereby dedicated to and for the use of the public. Utility Easements are hereby granted for the construction and maintenance of all public utilities. Drainage Easements are hereby granted to the public as indicated for drainage purposes. Reserves "A", "B" and "C" are hereby reserved for irrigation, walls, walks, lighting, landscaping, berms, ponds, drainage, drainage structures, open space, and utilities confined to easements. Reserve "D" is hereby reserved for irrigation, walks, open space, drainage, drainage structures, and utilities confined to easements. The Reserves are to be owned and maintained by the Home Owners Association for the addition. A drainage plan has been developed for this plat; the property shall remain at established grades, or as modified with the approval of the City Engineer, and unobstructed to allow for the conveyance of storm water.

Rivendale, LLC.

Robert J. Armstrong Member
Timothy J. Malone Member
 Robert J. Armstrong
 Timothy J. Malone

State of Kansas)
Sedgwick County)

The foregoing instrument acknowledged before me, this 9th day of February, 2007, by Robert J. Armstrong, Member, on behalf of Rivendale, LLC.

Mildred E. Franz

 Mildred E. Franz
 Notary Public

My appointment expires 02-13-2007

State of Kansas)
Sedgwick County)

The foregoing instrument acknowledged before me, this 1st day of February, 2007, by Timothy J. Malone, Member, on behalf of Rivendale, LLC.

Mildred E. Franz

 Mildred E. Franz
 Notary Public

My appointment expires 02-13-2007

We the undersigned, holders of a mortgage on a portion of the above described property, do hereby consent to this plat of "THE LEGACY 3RD ADDITION", Wichita, Sedgwick County, Kansas.

Legacy Bank, N.A.

Brian Hudson
 BRIAN HUDSON
 VICE PRESIDENT

State of Kansas)
Sedgwick County)

The foregoing instrument acknowledged before me this 13th day of February, 2007, by Brian Hudson, Vice President of Legacy Bank, N.A., on behalf of the Bank.

Brian Hudson

 Brian Hudson
 Notary Public

My appointment expires 01-12-2009

This plat of "THE LEGACY 3RD ADDITION", Wichita, Sedgwick County, Kansas, has been submitted to and approved by the Wichita-Sedgwick County Metropolitan Area Planning Commission, Wichita, Kansas.

Dated this 7th day of December, 2006.

Wichita-Sedgwick County Metropolitan Area Planning Commission

John L. Schlegel

 John L. Schlegel
 Secretary

This plat approved and all dedications shown hereon accepted by the

City Council of the City of Wichita, Kansas, this 13 day of March, 2007

At the Direction of the City Council
Carlos Moyano Mayor
Karen Sublett City Clerk
 Karen Sublett

Reviewed in accordance with K.S.A. 12-205 on this 20th day of February, 2007.

Tricia L. Romano

 Tricia L. Romano, LS #1246
 Deputy County Surveyor
 Sedgwick County Kansas

Entered on transfer record this 16th day of August, 2007.

Don Brace

 Don Brace
 County Clerk

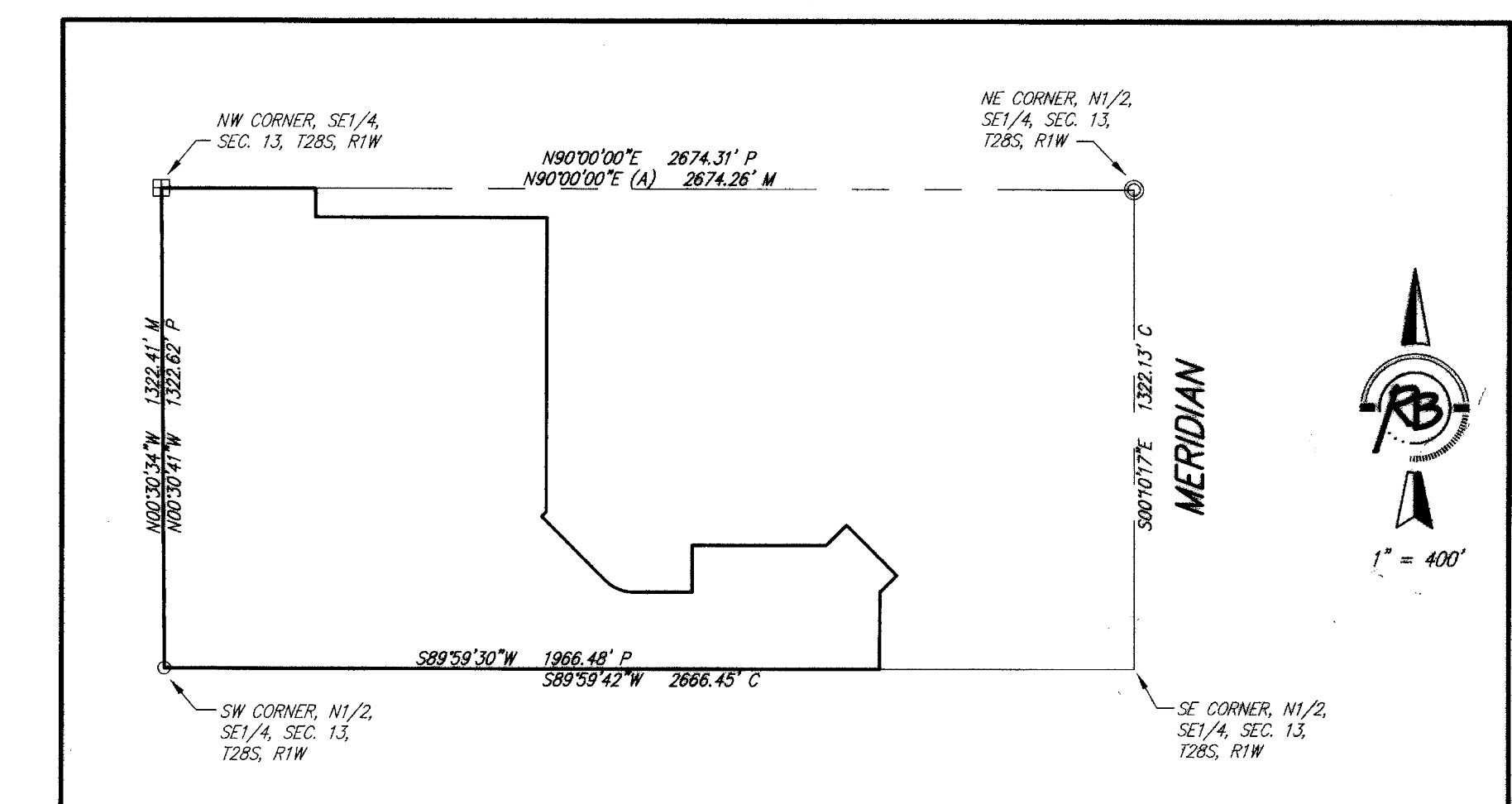
State of Kansas)
Sedgwick County)

This is to certify that this plat has been filed for record in the office of the Register of Deeds, this 16th day of August, 2007, at 12:39:35 o'clock P.M., and is duly recorded.

Jonny Buckingham Register of Deeds
For Bill Week
Jonny Buckingham Deputy
 Jonny Buckingham
 Deputy

Sedgwick County
 Register of Deeds - Bill Week
 DOC # FLM-16: 26908882
 Receipt # 1054529
 Pages Recorded: 1
 Date Recorded: 8/16/2007 12:39:35 PM
 Authorized By: [Signature]

BLOCK	LOT NO.	ELEVATION (N.G. V.D.)
1	9	1282
2	1-3	1282
3	25-27	1282
4	1-13	1282
8	1-8	1281



Ruggles & Bohm, P.A.
 Engineering, Surveying, Land Planning
 924 North Main
 Wichita, Kansas 67203
 www.rbkansas.com
 (316) 264-8008
 (316) 264-4621 fax
 E-mail: info@rbkansas.com

DWG FILE: SURVEY BASE
 PROJECT NO. 2940P
 FEBRUARY 1, 2007