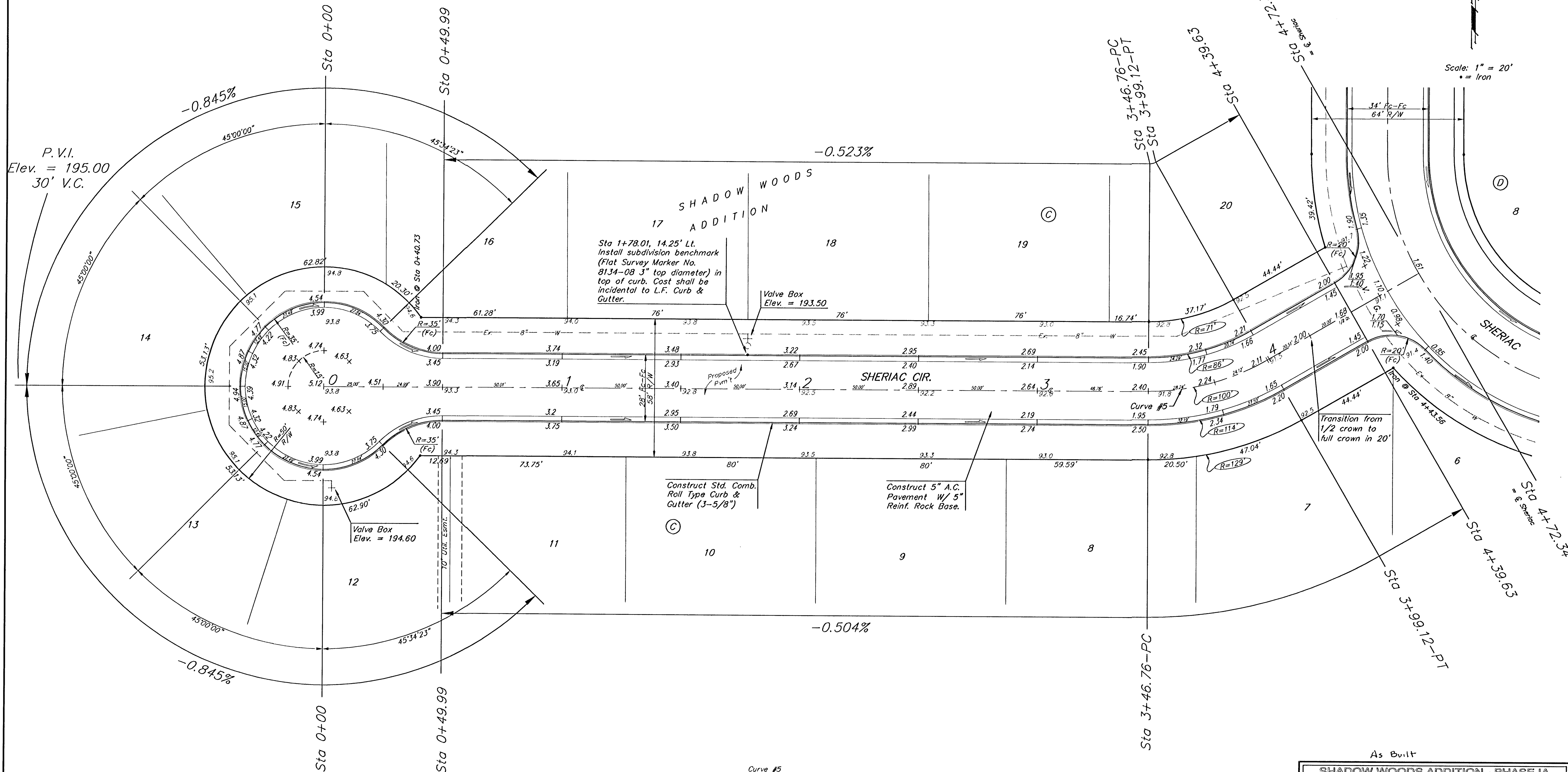


RR Spike in N. Face of PP in N. R/W of Maple N. of Nineiron. Elev. = 177.01 (City Datum)

"□" Cut center of north Headwall of RCBC in N. R/W of Maple 570' East of centerline of City View. Elev. = 187.91 (City Datum)

Scale: 1" = 20'  
• = Iron



Curve #5  
Curve Data Based on Centerline  
Rad. = 100' Delta = 29° 59' 53" Tangent = 26.79'  
Arc = 52.36' L.C. = 51.76' Del/Ft. = 17.18758 Min.

Station	Arc	FACE CHORD LENGTHS		Defl.	T. Defl.
		8' Lt.	8' Rt.		
3+46.76	-	-	-	0°00'00"	0°00'00"
3+50.00	3.24'	2.53'	3.95'	0°55'41"	0°55'41"
3+75.00	25.00'	19.45'	30.42'	7°09'41"	8°05'22"
3+99.12	24.12'	18.77'	29.35'	6°54'34"	14°59'56"

NOTE: ROLL TYPE CURB & GUTTER TO BE CONSTRUCTED ON THE PAVEMENT SHOWN ON THIS SHEET. TOP OF CURB ELEVATIONS ARE GIVEN FOR FULL HEIGHT CURB.

As Built

SHADOW WOODS ADDITION - PHASE IA  
**SHERIAC CT.**  
STA 0+00 TO STA 4+72.34

**BAUGHMAN COMPANY P.A.**  
ENGINEERING, SURVEYING, & PLANNING  
315-262-7271 • 315 ELLIS • WICHITA, KANSAS 67211

PROJECT NUMBER  
**472-63721**

DESIGN: NBW    DRAWN: TMS    APPROVED: [Signature]    DATE: 05-28-03    SCALE: Noted

SHEET **10** OF **37**

Shadow Woods 25x4 03-01-E498