

RR Spike in N. Face of PP in N. R/W of Maple N. of Nineiron. Elev. = 177.01 (City Datum)

" " Cut center of north Headwall of RCBC in N. R/W of Maple 570' East of centerline of City View. Elev. = 187.91 (City Datum)

Sta 0+00.0, Line 3
Begin construction of 36" RCP w/ end section. Install 4x12" S.Y. light stone rip-rap as indicated.

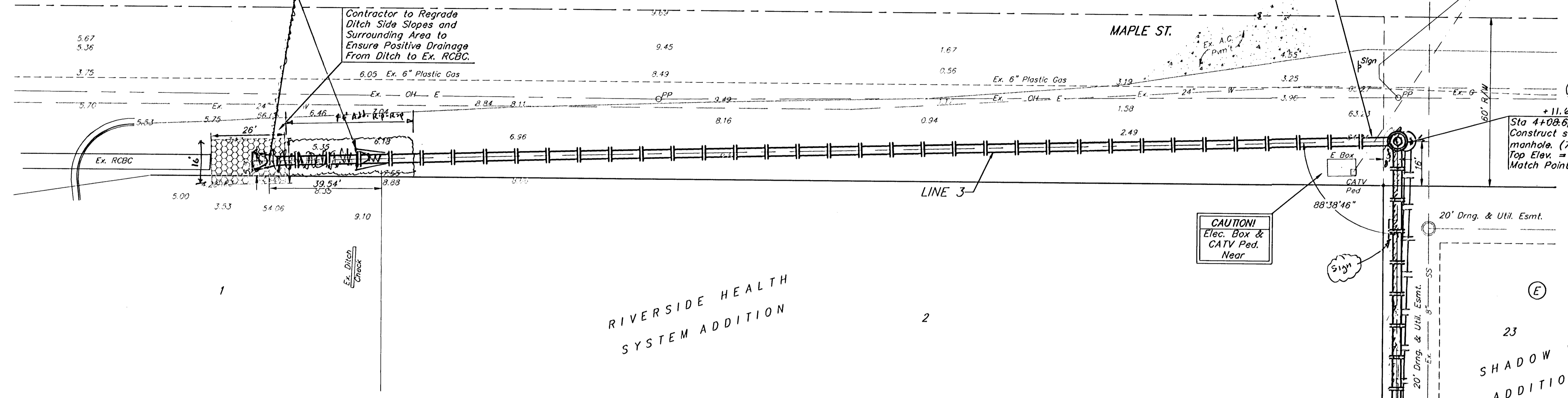
Contractor to Regrade Ditch Side Slopes and Surrounding Area to Ensure Positive Drainage From Ditch to Ex. RCBC.

CAUTION!
Ex. UG Elec. & CATV Crossings

CAUTION!
Elec. Box & CATV Ped. Near

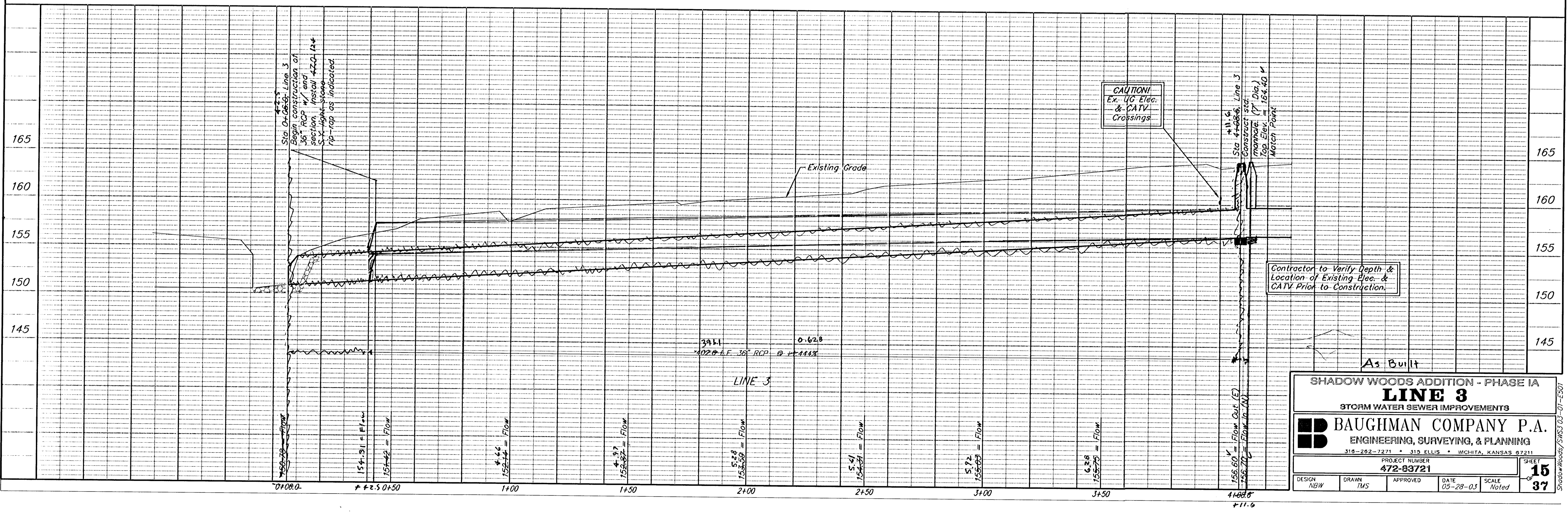
Move West to Miss S.Y.

Scale: 1" = 20' Horizontal
1" = 5' Vertical
• = Iron



RIVERSIDE HEALTH SYSTEM ADDITION

SHADOW WOODS ADDITION



SHADOW WOODS ADDITION - PHASE IIA
LINE 3
STORM WATER SEWER IMPROVEMENTS

BAUGHMAN COMPANY P.A.
ENGINEERING, SURVEYING, & PLANNING
310-262-7271 • 310 ELLIS • WCHITA, KANSAS 67211

PROJECT NUMBER: 472-93721
SHEET: 15 OF 37

DESIGN: NBW	DRAWN: TMS	APPROVED:	DATE: 05-28-03	SCALE: Noted
-------------	------------	-----------	----------------	--------------