

GENERAL NOTES:

- The Contractor shall comply with all applicable safety regulations. All construction shall be completed following current City Standard Specifications and Special Provisions.
- Contractor will be required to provide notice to utility companies a minimum of seventy-two (72) hours prior to any excavation, as follows:
 Kansas One-Call 687-2470
 The Contractor must notify the following in case of an emergency:
 AT&T 1-800-246-8464
 Black Hills Energy 1-800-694-8989
 City of Wichita Water & Sewer 1-316-219-8921
 City of Wichita Stormwater 1-316-268-4090
 City of Wichita Traffic 1-316-268-4034
 Cox Communications 1-888-249-3530
 Kansas Gas Service 1-888-482-4950
 Westar Energy 1-800-544-4857
- Utility service lines, poles, etc. are to be adjusted as necessary by others prior to construction unless the plans specifically call for their adjustment by the Contractor or unless the plans specifically identify a utility to be adjusted by its owner during construction. Existing utilities and their location, as shown on the plans, represent the best information obtainable for design. The Contractor will be required to work around existing utilities within the right-of-way which do not conflict with proposed construction.
- Rubble from the removal of miscellaneous structures and excess excavation which is to be wasted shall be disposed of on sites to be provided by the Contractor. These sites shall be approved by the Engineer as to suitability, appearance and site location. Locations, in the opinion of the Engineer, that will leave an unsightly appearance will not be approved. All disposal sites must be approved by the Kansas Department of Health and Environment. Material either stockpiled or disposed of in a flood plain will require a Kansas State Board of Agriculture permit. Any material dumped in waters of the United States or wetlands is subject to U.S. Corps. of Engineers permitting regulations. Any material buried or stockpiled beyond approved construction limits will require additional archaeological investigations unless buried in a previously approved borrow location.
- Trees and shrubs in public right-of-way which are in direct conflict with proposed new construction shall be removed by the Contractor with the City Engineer's approval. Trees and shrubs which are not in direct conflict with proposed new construction shall be saved and protected from damage.
- The Contractor shall give all property owners and/or tenants of developed property abutting the construction of this project a minimum of ten (10) days notice prior to start of construction.
- The Contractor shall be responsible for preserving property irons. The Contractor will be required to re-establish any property irons which are damaged or destroyed by his construction operations. Such irons shall be re-established by a licensed land surveyor in accordance with state laws.
- The Engineering Division shall field locate water valve one time during construction when requested by the Contractor. It shall be the Contractor's responsibility to preserve such field locations during the construction process. Water valves, valve boxes or fire hydrants damaged during construction shall be repaired by Contractor at his own expense. Valve boxes and water meters within the project limits shall be adjusted to match field grades by the contractor.
- The Contractor shall notify the consultant engineer and Tom Mason at 316-268-4574 with the City of Wichita with the anticipated construction start date and notify them of project completion. Staking and inspection for this project will be the responsibility of the Contractor.
- If traffic will be impacted by construction, a traffic control plan must be submitted and approved by the City Traffic Engineer, Brian Coon at traffic@wichita.gov before construction can begin. The Contractor shall be responsible for all traffic control measures to facilitate construction. All construction zone markings and signage shall conform to the latest version of Manual on Uniform Traffic Control Devices (MUTCD) as published by the US Dept. of Transportation, Federal Highway Administration. All costs associated with construction markings and signage shall be the Contractor's responsibility.
- All elevations shown are NAVD 88.
- All areas disturbed during construction that will not be under proposed pavement shall be restored to match existing conditions.

- Any sidewalk, drive approach, or street pavement removed to construct project must have a pavement cut permit and be replaced by the City contractor. Permits can be obtained by calling 316-268-4501 or 316-268-4480.
- City maintenance of storm sewer ends at last structure in the easement or right-of-way.
- A portion of excess excavated material shall be mounded around manholes which extend more than one (1) foot above the existing ground. Such mound shall be constructed with new development a six (6) foot diameter flat top with 4 to 1 side slopes down to the original ground. The elevation of the flat top of the mound shall be 0.4 foot below the top to the manhole.
- Geotechnical report available upon request.
- Contractor shall limit the extent of trench openings overnight and weekends to less than 50 feet.
- The inspecting firm shall submit to the City Stormwater Maintenance Division a digital copy of the CCTV inspection of the conduits and structures following construction. The digital file formation shall be compatible with the City input template. A copy of the template is available upon request at 316-268-4090.
- The Contractor shall protect from damage and support existing utilities through construction as approved by the utility owner and the Engineer at the contractor's expense.

Benchmarks

- BM #1: "□" Chiseled on Top of Curb, SW corner of Osie St. & Roosevelt St. Elevation=1338.86 (NAVD 88) N=4,591.20 E=3,651.57
- BM #2: "□" Chiseled on Top of Light Pole Base, 88' east of main entrance of Wichita Mall, 266' south of CL of Harry St. Elevation=1338.81 (NAVD 88) N=4,780.43 E=4,431.24
- BM #3: "□" Chiseled on Top of Curb, west side of Terrace Dr., 458' south of CL of Harry St. Elevation=1335.24 (NAVD 88) N=4,589.85 E=5,007.58
- BM #4: "□" Chiseled on Top of Light Pole Base, 317' east and 63' south of the SW corner of Wichita Mall. Elevation=1339.25 (NAVD 88) N=4,162.98 E=4,181.04

STORM SEWER IMPROVEMENTS to serve WOOD PLAZA ADDITION WICHITA MALL

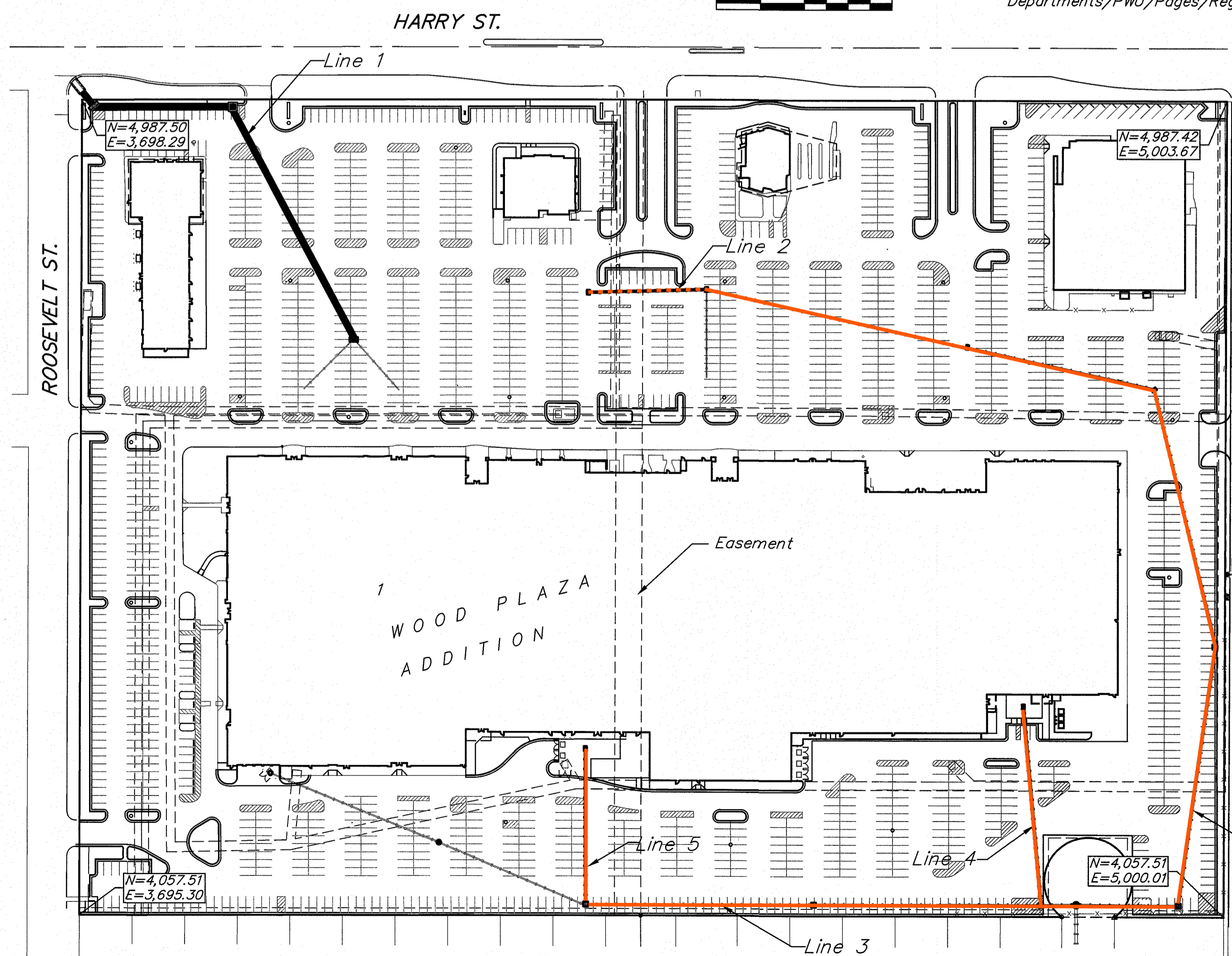
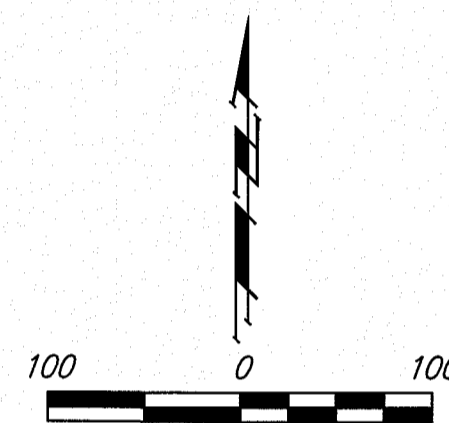
4165 E. HARRY STREET
CITY OF WICHITA, KANSAS

Gary Janzen, P.E. City Engineer
Project Number
0462 PPD (133119)

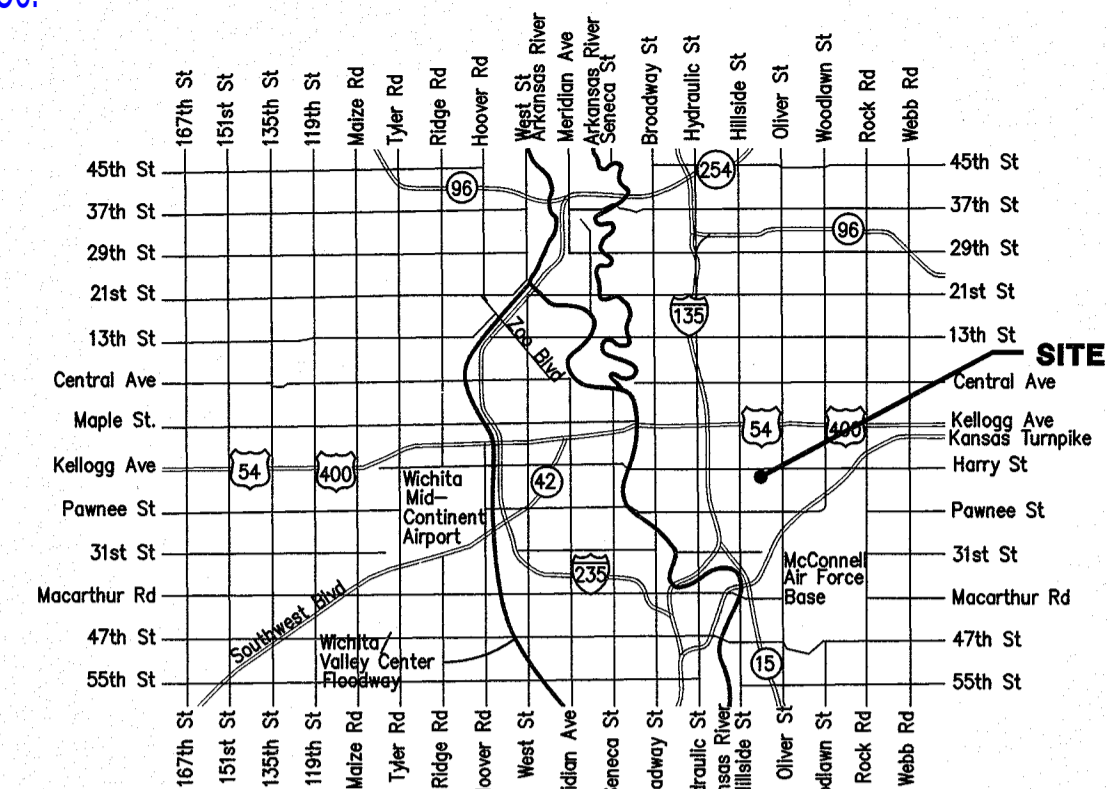
Sheet Index

Title Sheet	1
Flume Plan & Detail	2
Line 1	3
Line 2	4-5
Line 3	6-7
Lines 4 & 5	8
Erosion Control Plan	9
Grading Plan	10
Copy of Plat	11

SWS Details SW-101, SW-201, SW-202, SW-301, SW-302, SW-303 and Erosion Control Details available at City of Wichita web site at <http://www.wichita.gov/Government/Departments/PWU/Pages/Regulations.aspx>



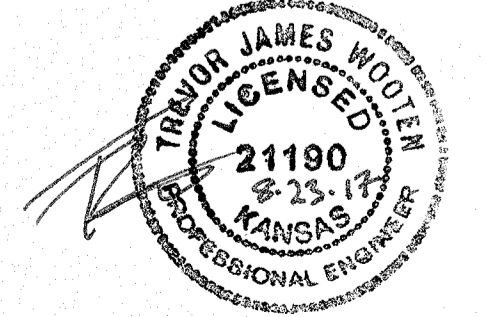
AS BUILT PLANS
Contractor: CK Construction
Inspector: Fred Smith, Baughman Co.
As Built by: KEK, 3/27/18



Vicinity Map

Stormwater Certification:
 Redevelopment
 These construction plans were prepared in accordance with the current Stormwater Management Regulations as set forth in the City of Wichita's Stormwater Management Ordinance 16.32 and the policies/guidelines presented in the Wichita/Sedgwick County Stormwater Manual.
 Disturbed Area = 15.3 ac. (SWQ treatment area=4.6 ac. to be enrolled on Off-site program)
 Detention: Not required, no new impervious added.
 Storm Water Quality: Off-site BMP program for redevelopment (4.6 acres for treatment).
 The BMPs used for this development is drop inlet protection, silt fence, and construction entrance.

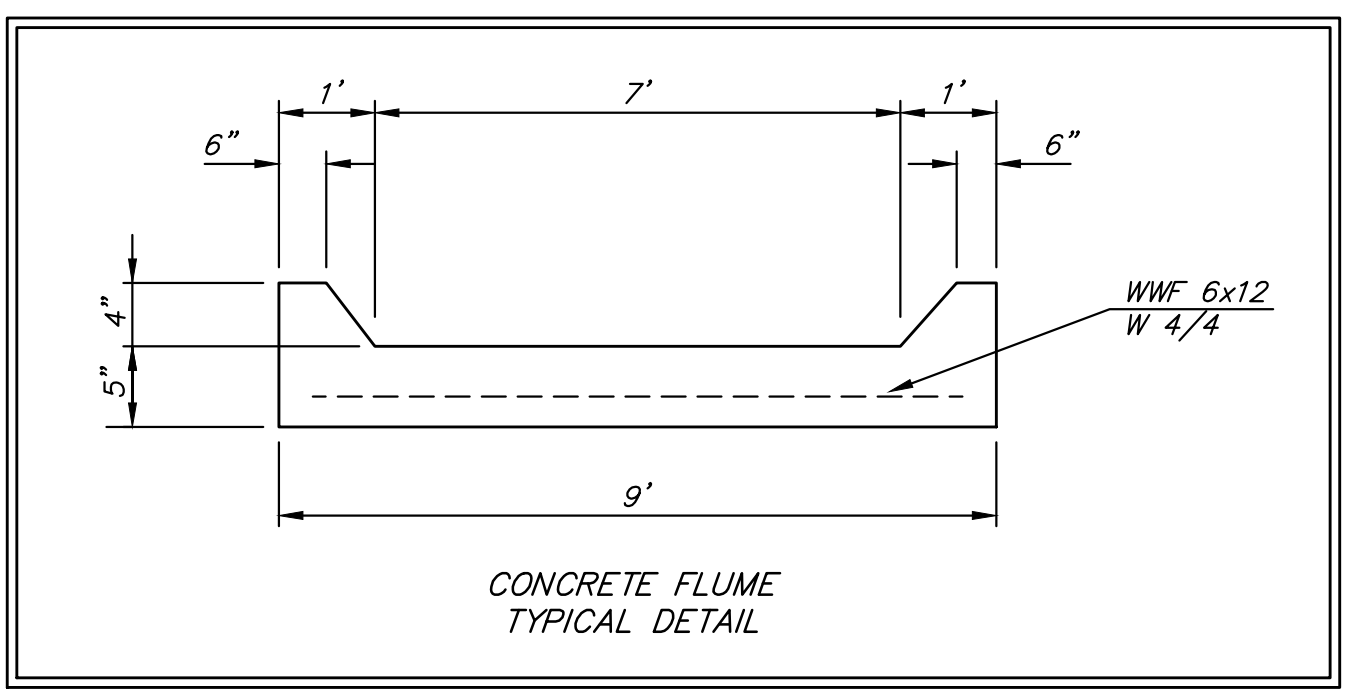
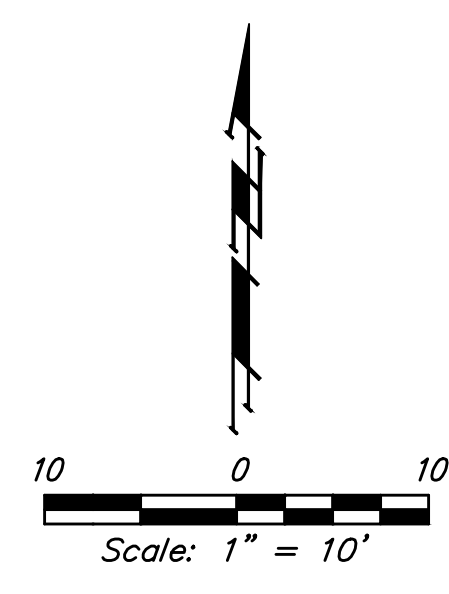
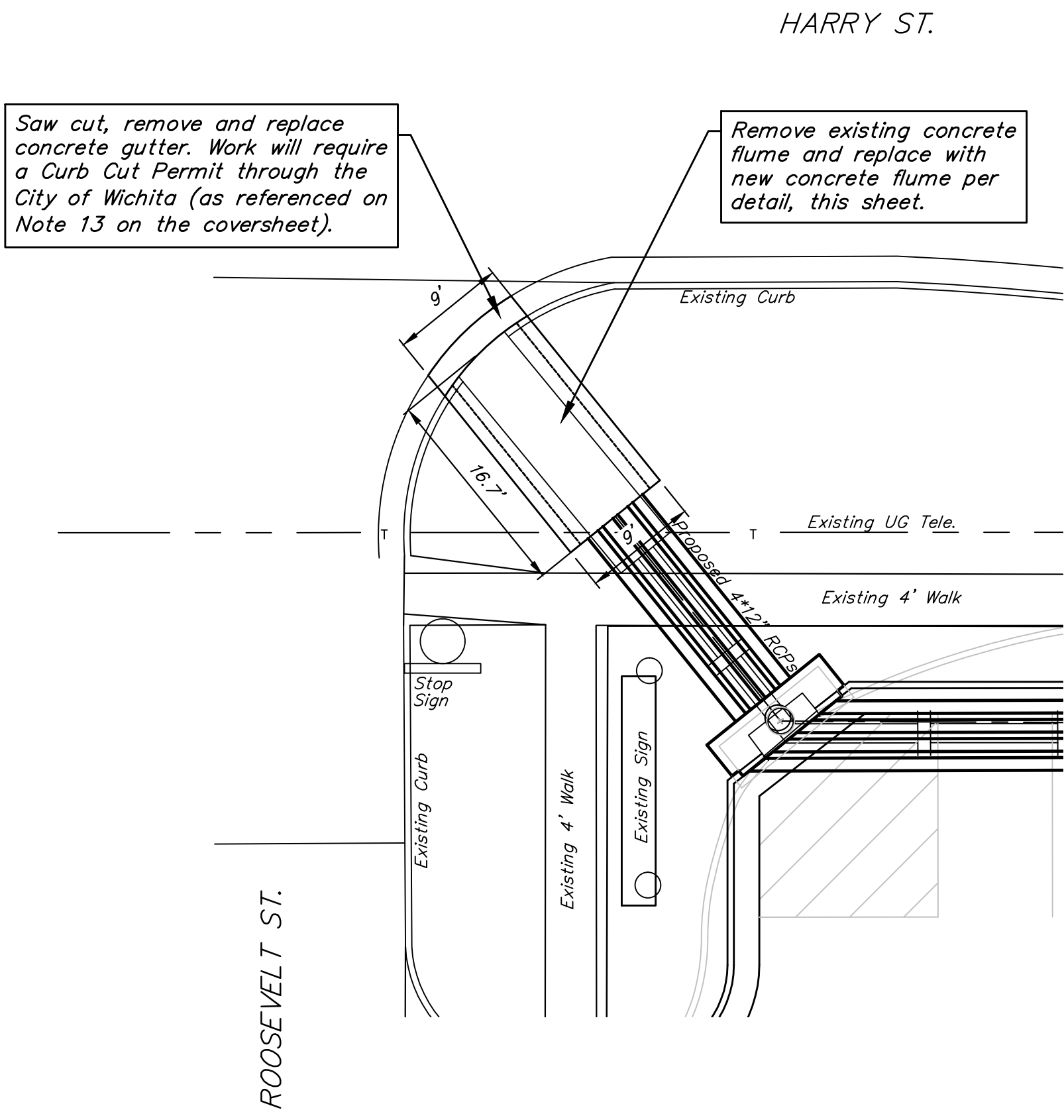
APPROVED AS NOTED
 BY WICHITA PUBLIC WORKS ENGINEERING
 AND STORMWATER DIVISION
 Engineering *Reuben Diefel* 8/25/17
 Stormwater *Joe Kille* PE 8/25/17
 NOTE TO CONTRACTORS
 Inspection and testing for this project is to be provided by a Licensed Consulting Engineering Firm under contract with the Owner/Developer. Said Inspection to be in accordance with the City of Wichita standard construction engineering practices and certified by a Licensed Professional Engineer in the state of Kansas. No work shall be performed by the Contractor without such inspection nor shall any work be commenced without written authorization by City Engineering. All Construction and Materials shall comply with the current City of Wichita Specifications and Standards and Special Provisions (on file and available at Wichita.gov).
 An approved copy of these plans signed by City staff are required on-site.



August 2017

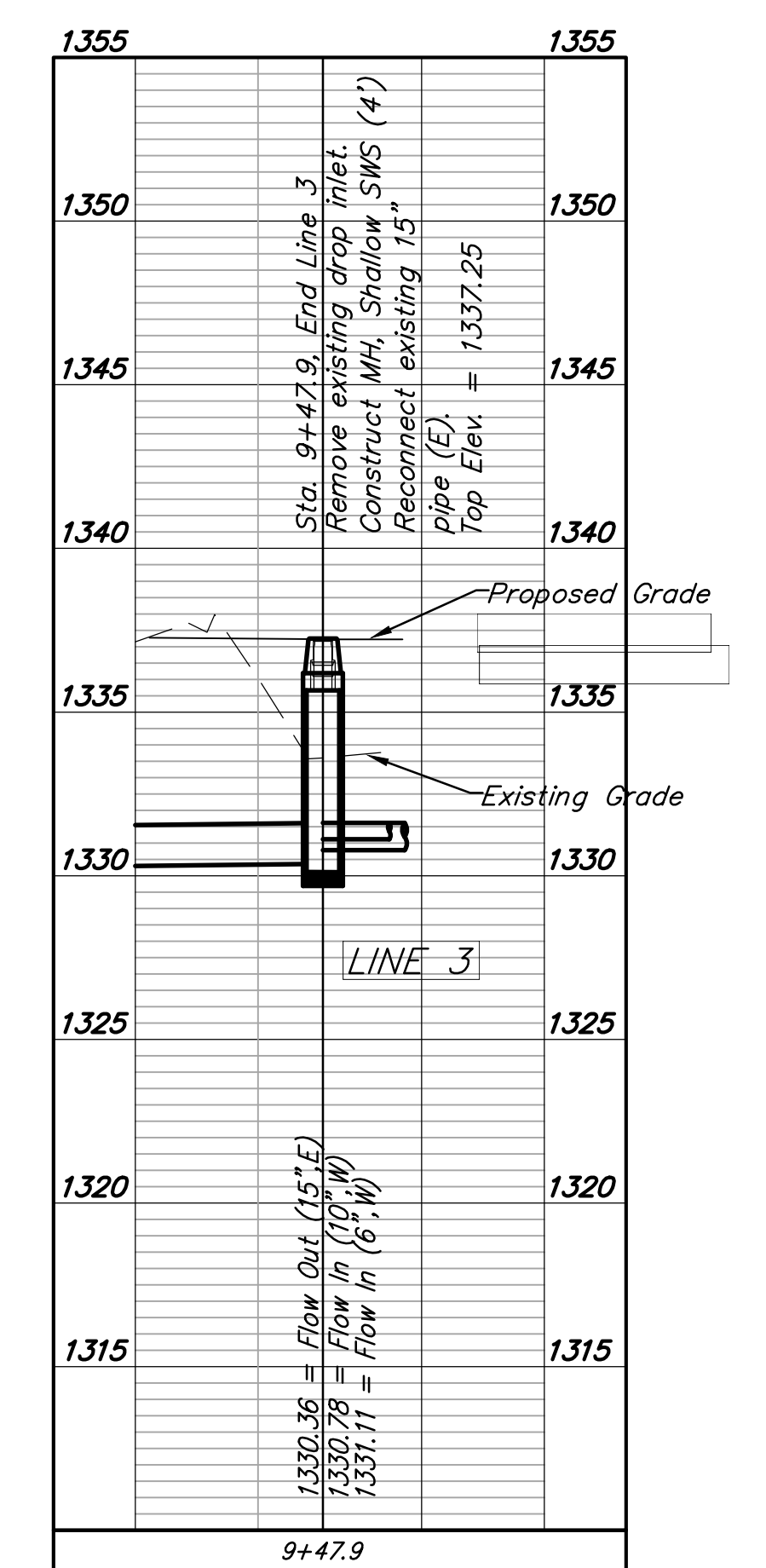
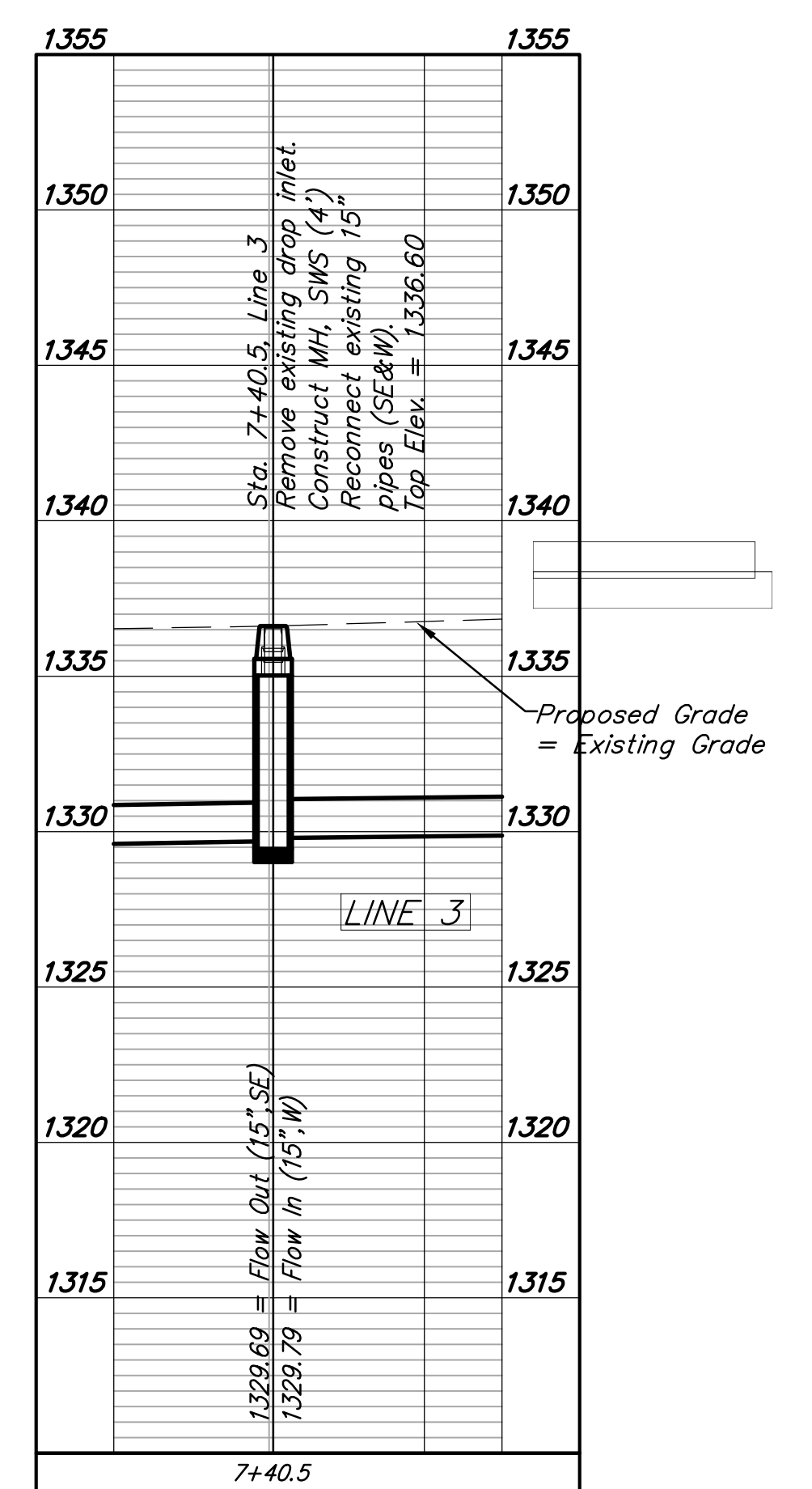
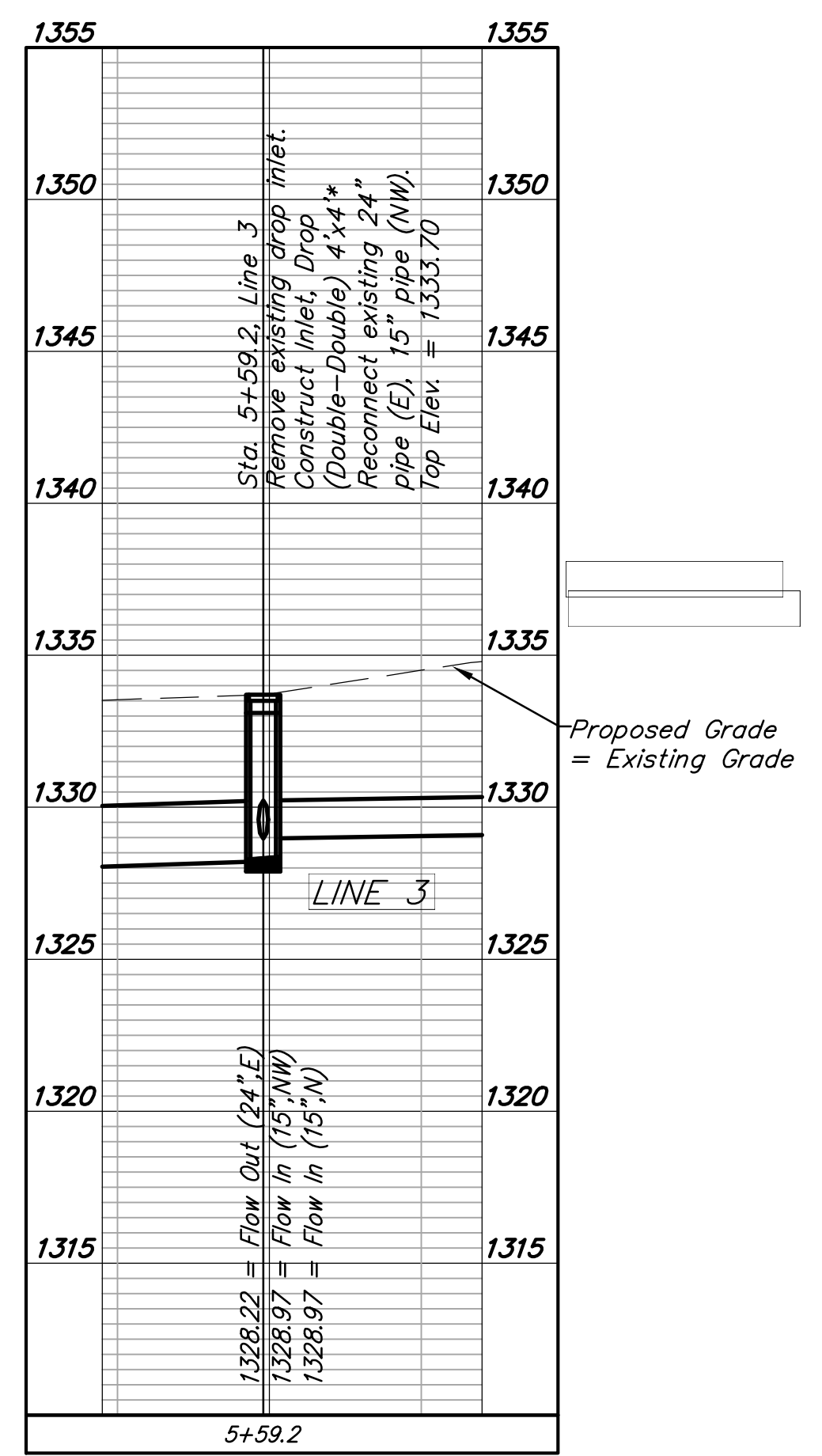
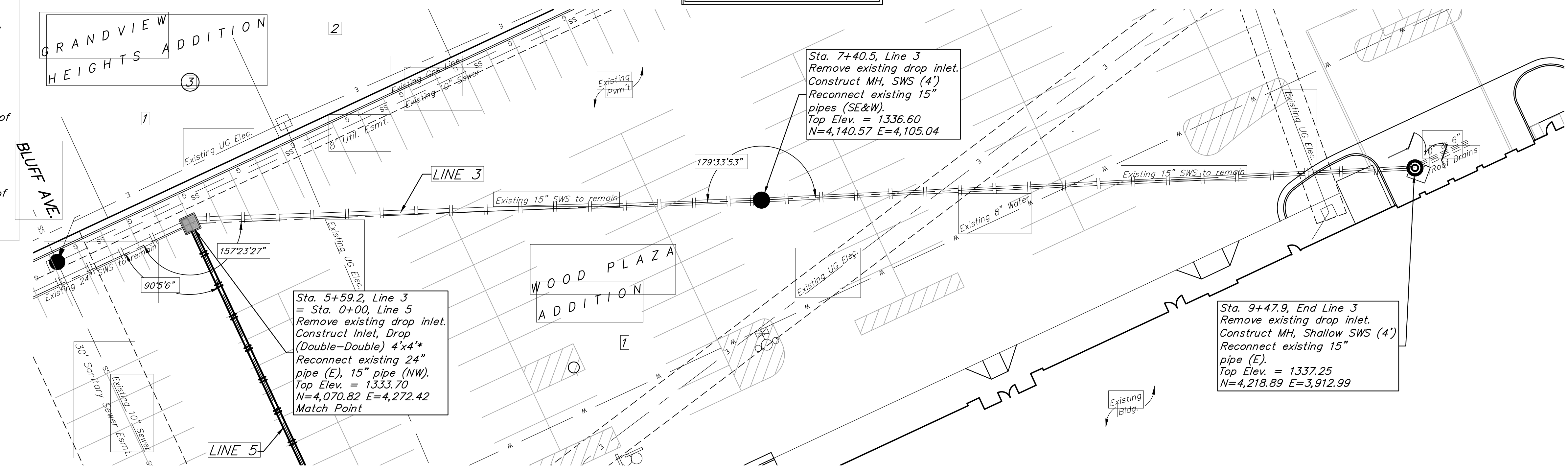


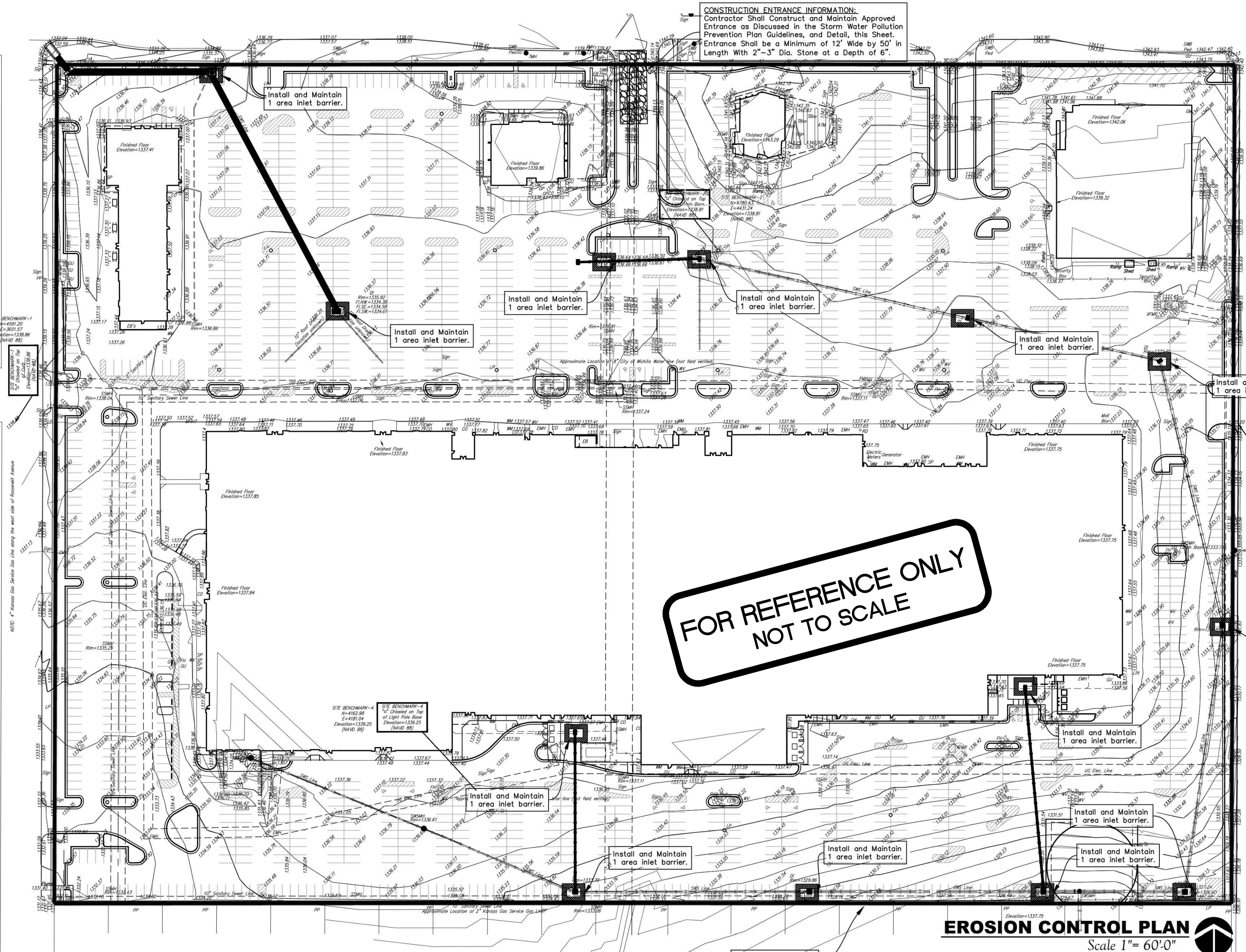
Baughman Company, P.A. 315 Ellis St. Wichita, KS 67211 P 316-262-7271 F 316-262-0146
 ENGINEERING | SURVEYING | PLANNING | LANDSCAPE ARCHITECTURE



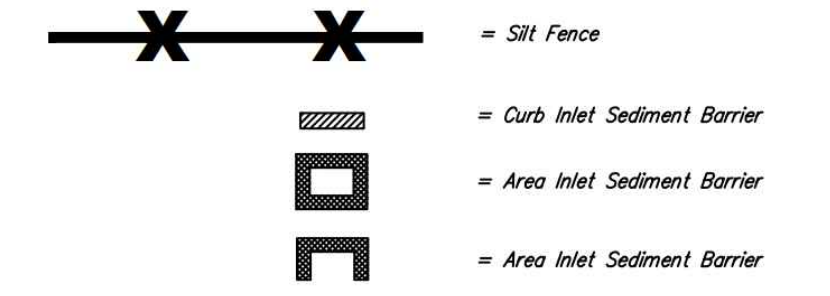
BENCHMARKS:
 BM #1: "□" Chiseled on Top of Curb, SW corner of Osie St. & Roosevelt St. Elevation=1338.86 (NAVD 88) N=4,591.20 E=3,651.57
 BM #2: "□" Chiseled on Top of Light Pole Base, 88' east of main entrance of Wichita Mall, 266' south of CL of Harry St. Elevation=1338.81 (NAVD 88) N=4,780.43 E=4,431.24
 BM #3: "□" Chiseled on Top of Curb, west side of Terrace Dr., 458' south of CL of Harry St. Elevation=1335.24 (NAVD 88) N=4,589.85 E=5,007.58
 BM #4: "□" Chiseled on Top of Light Pole Base, 317' east and 63' south of the SW corner of Wichita Mall. Elevation=1339.25 (NAVD 88) N=4,162.98 E=4,181.04

2'x4' & 4'x4' Drop Inlets shall be constructed with 18" concrete apron per standard City of Wichita Single/Double Drop Inlet Detail (2% slope on apron).



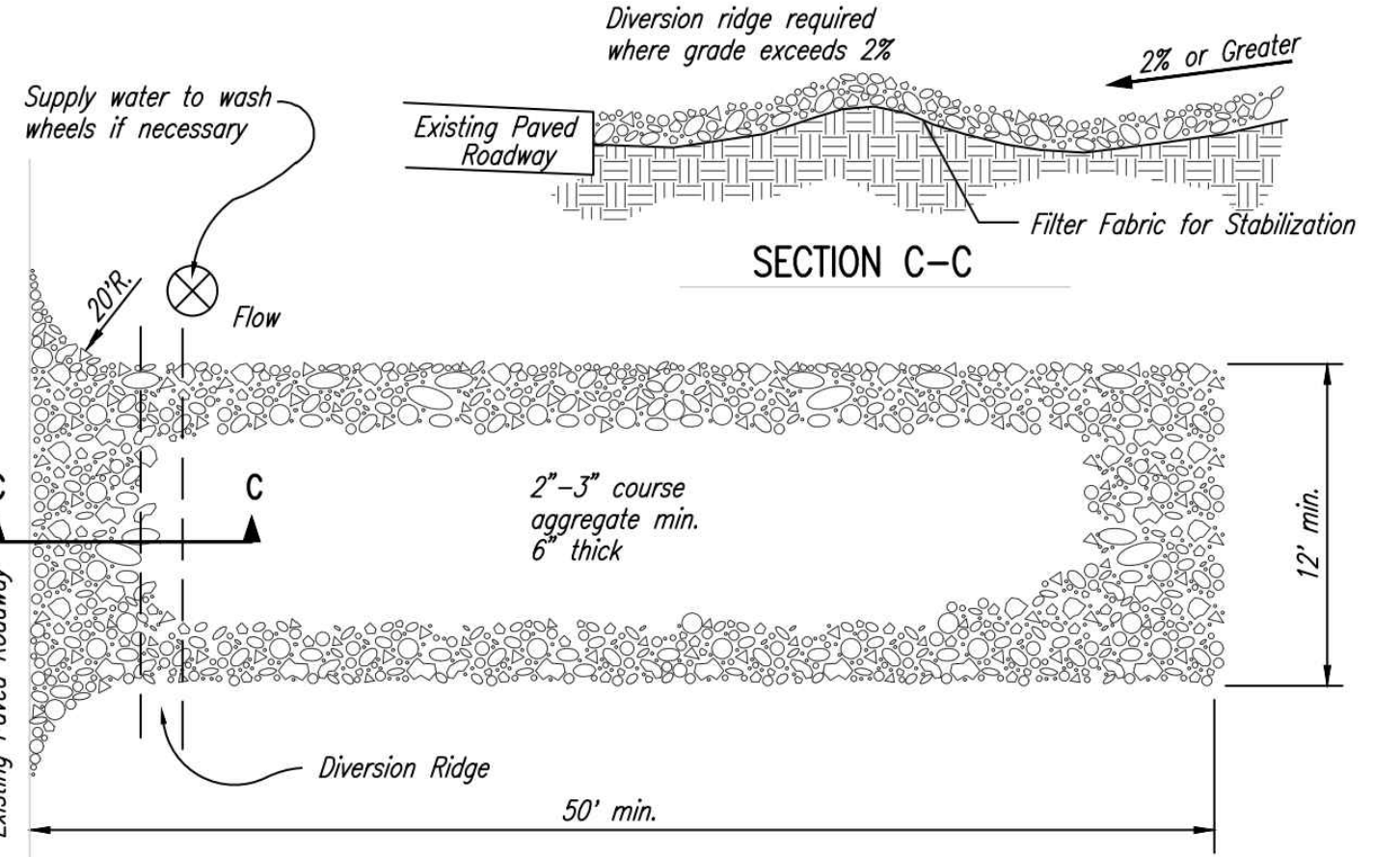
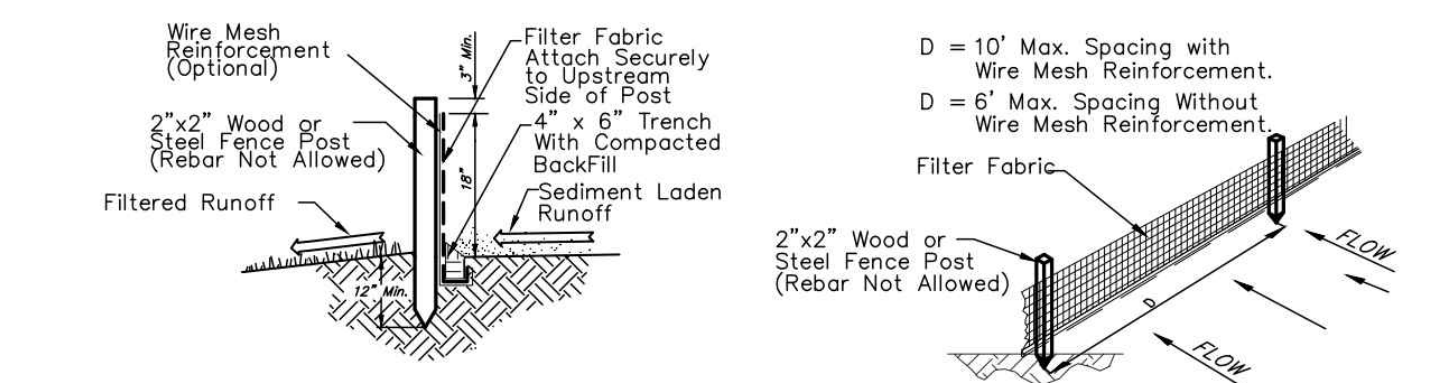


EROSION CONTROL LEGEND

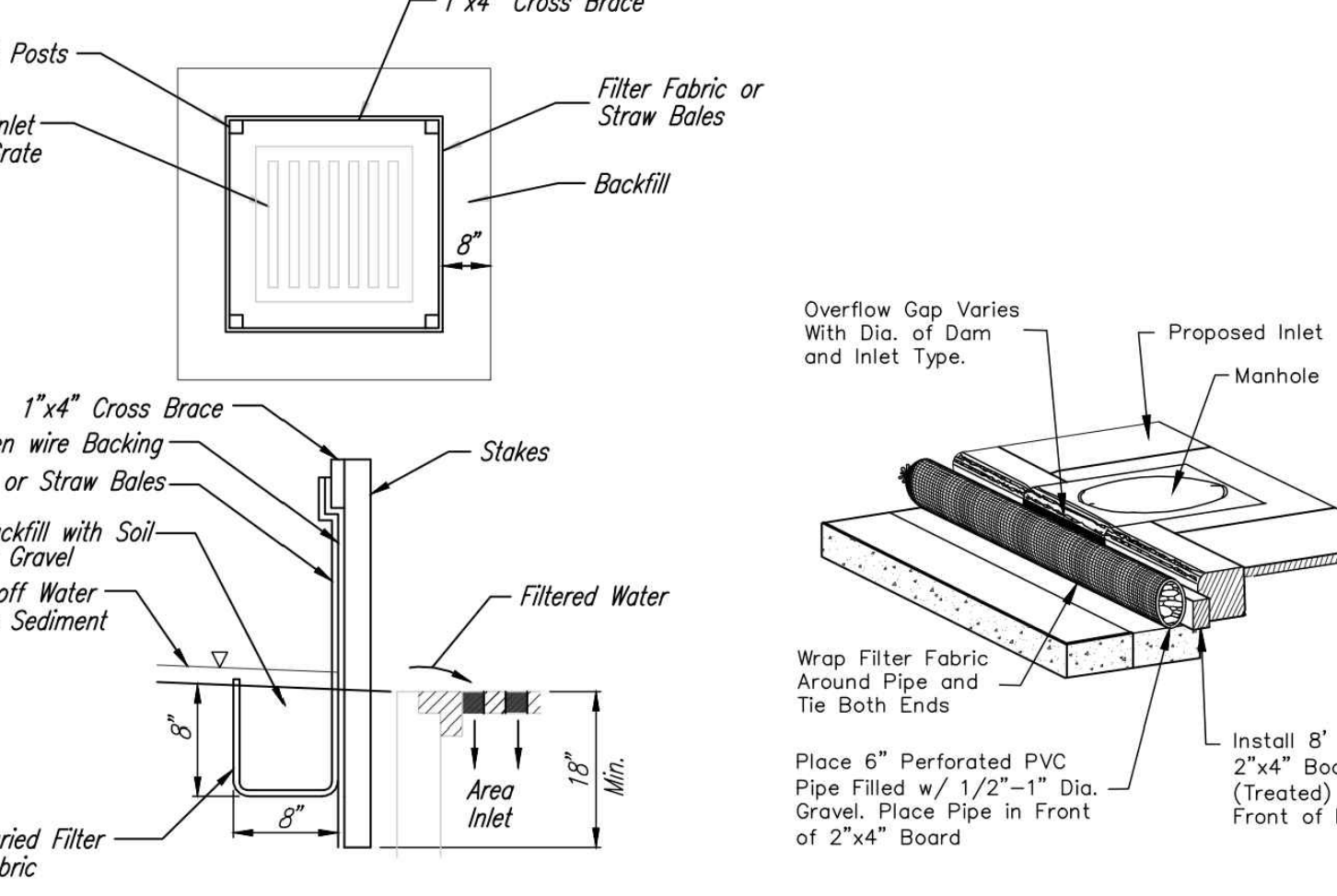


EROSION CONTROL NOTES

- No land clearing or grading shall begin until all applicable erosion control measures have been installed. The Contractor shall comply with any unusual requirements as necessary for the site to be in compliance with standard EPA and KDHE regulations during construction, per this plan and City/KDHE/EPA specs.
- All exposed areas shall be seeded as specified within 30 days of final GRADING.
- Should construction stop for longer than 14 days, the site shall be seeded as specified.
- Maintain erosion control measures after each rain and at least once a week.
- This plan shall not be considered all inclusive as the contractor shall take all necessary precautions to prevent soil sediment from leaving the site.
- Contractor shall comply with all state and local ordinances that apply.
- Additional erosion and sediment control measures will be installed if deemed necessary by on site inspection.
- Land disturbing activities shall not commence until approval to do so has been received by governing authorities.
- If installation of storm drainage system should be interrupted by weather or nightfall, the pipe ends shall be covered with filter fabric.
- See Landscape Plan for ground treatments in all disturbed areas beyond impervious surfaces.
- This SWPP Plan should be in job trailer and/or on site at all times. The Contractor is responsible for any needed changes, updates or maintenance to BMP's on site. This plan may change and updates need to be recorded and documented on the plan. This plan is a flexible plan, due to changing site conditions and weather. Please inform Landscape Architect and/or Engineer of changes to plan.
- ANY substitutions for the sediment control devices shown, must be approved by the Landscape Architect and/or Engineer prior to any uses on site.
- An NPDES Permit has been approved by KDHE and shall be kept on site during construction.



- NOTES:**
- THE ENTRANCE SHALL BE MAINTAINED IN A CONDITION THAT WILL PREVENT TRACKING OR FLOWING OF SEDIMENT ONTO PUBLIC RIGHTS-OF-WAY. THIS MAY REQUIRE TOP DRESSING, REPAIR AND/OR CLEANOUT OF ANY MEASURES USED TO TRAP SEDIMENT.
 - WHEN NECESSARY, WHEELS SHALL BE CLEANED PRIOR TO ENTRANCE ONTO PUBLIC RIGHT-OF-WAY.
 - WHEN WASHING IS REQUIRED, IT SHALL BE DONE ON AN AREA STABILIZED WITH CRUSHED STONE THAT DRAINS INTO AN APPROVED SEDIMENT TRAP OR SEDIMENT BASIN, AS SHOWN ABOVE.
 - DRIVE ENTRANCES ONTO RESIDENTIAL LOTS WILL NOT BE REQUIRED TO HAVE THE SEDIMENT BARRIER SHOWN, BUT WHEEL WASHING MAY BE REQUIRED IF STABILIZED ENTRANCE IS NOT SUFFICIENT TO KEEP MUD FROM BEING TRACKED ONTO ADJACENT STREET. ENTRANCE SHALL EXTEND FROM BACK OF CURB TO DWELLING.

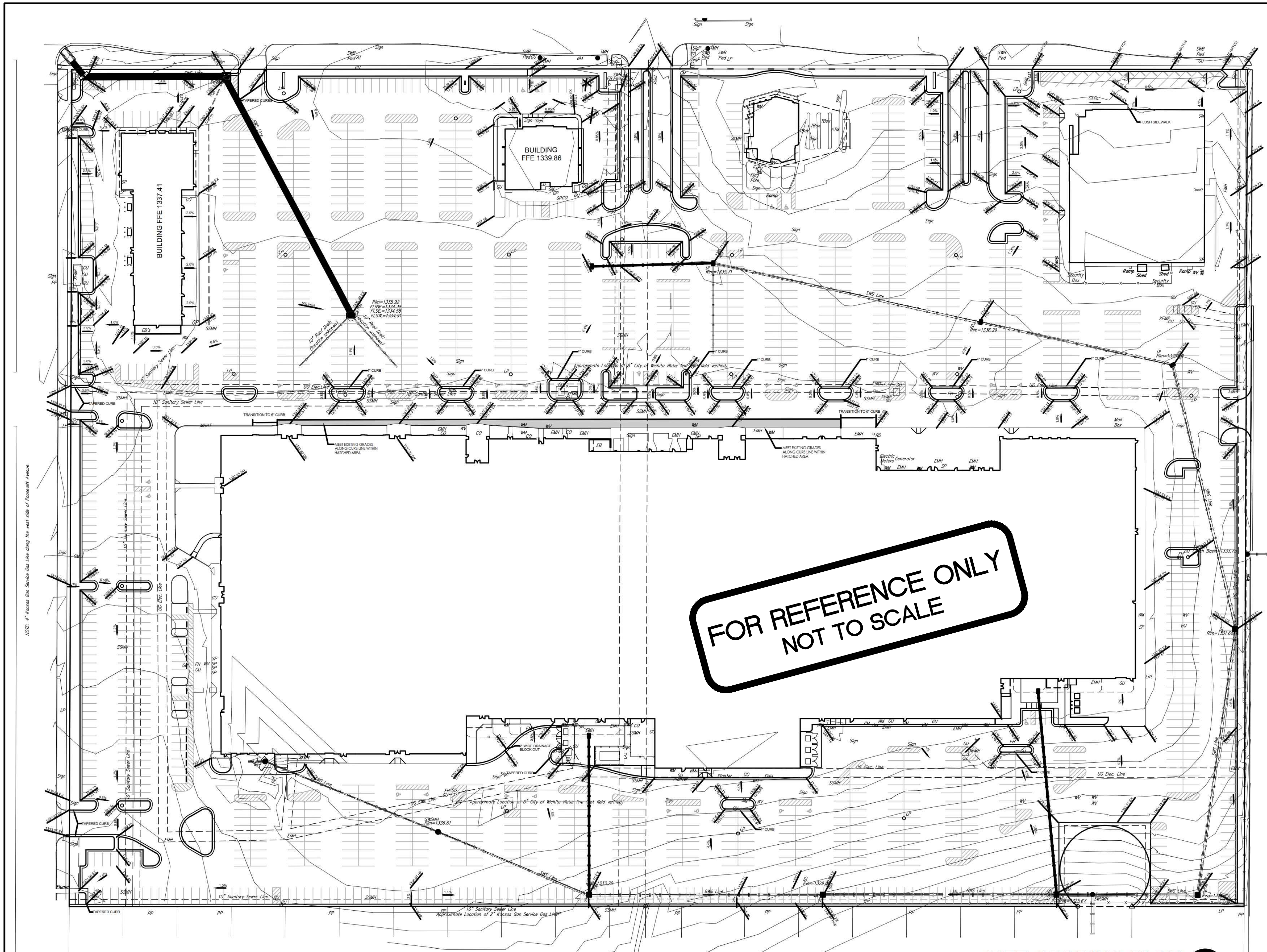


WICHITA MALL EROSION CONTROL PLAN

Baughman Company, P.A.
 115 E. 10th St., Wichita, KS 67211 P 316.262.2171 F 316.262.0149
 ENGINEERING | SURVEYING | PLANNING | LANDSCAPE ARCHITECTURE

PROJECT NUMBER: _____ DESIGN: TJW DRAWN: CJS
 APPROVED: TJW DATE: APRIL 2017
 SCALE: AS SHOWN
 SHEET: **1 OF 1**

13-07-E931



GRADING NOTES

- Contractor shall be required to provide notice to Kansas One Call at 687-2470 a minimum of three (3) working days prior to any excavation or work adjacent to utilities.
 Kansas One Call 1-800-DIG-SAFE
- The Contractor must notify the following in case of an emergency:
 Kansas Gas Service (Gas).....1-888-482-4950
 Black Hills Energy (Gas).....1-800-303-0357
 Westar Energy (Electric).....383-8650
 Cox Communications (Telecommunication).....262-4270
 AT&T (Telecommunication).....268-2759
 City of Wichita Water Dept. (Water).....268-4563
 or 268-4908
 City of Wichita Sewer Maint.(San. Sewer).....268-4024
 or 262-6000
 City of Wichita Storm Sewer Maint. (Storm Sewer).....268-4090
 City of Wichita Traffic Maint.(Traf. Control).....268-4034
 or 268-4203
 Conoco Pipeline Co. (Petroleum).....1-800-231-2551
 Williams Pipeline Co. (Petroleum).....329-6600
 or 1-800-324-9696
 Phillips Pipeline Co. (Petroleum).....1-800-766-8230
- Existing utilities and their locations, as shown on the plans, represent the best information obtainable for design. Location information has been obtained from the various utility companies and is either from company record drawings or company provided field locations. The Contractor will be required to work around existing utilities which do not conflict with proposed construction.
- Traffic affected by demolition on this project shall be handled in accordance with the latest edition of the Manual on Uniform Traffic Control Devices (MUTCD).
- The Contractor shall provide appropriate signage throughout the sequence of construction clearly stating where construction entrances are.
- The Contractor shall take all necessary precautions to protect the general public during the construction process. This may include the use of fences and signage.

**FOR REFERENCE ONLY
NOT TO SCALE**

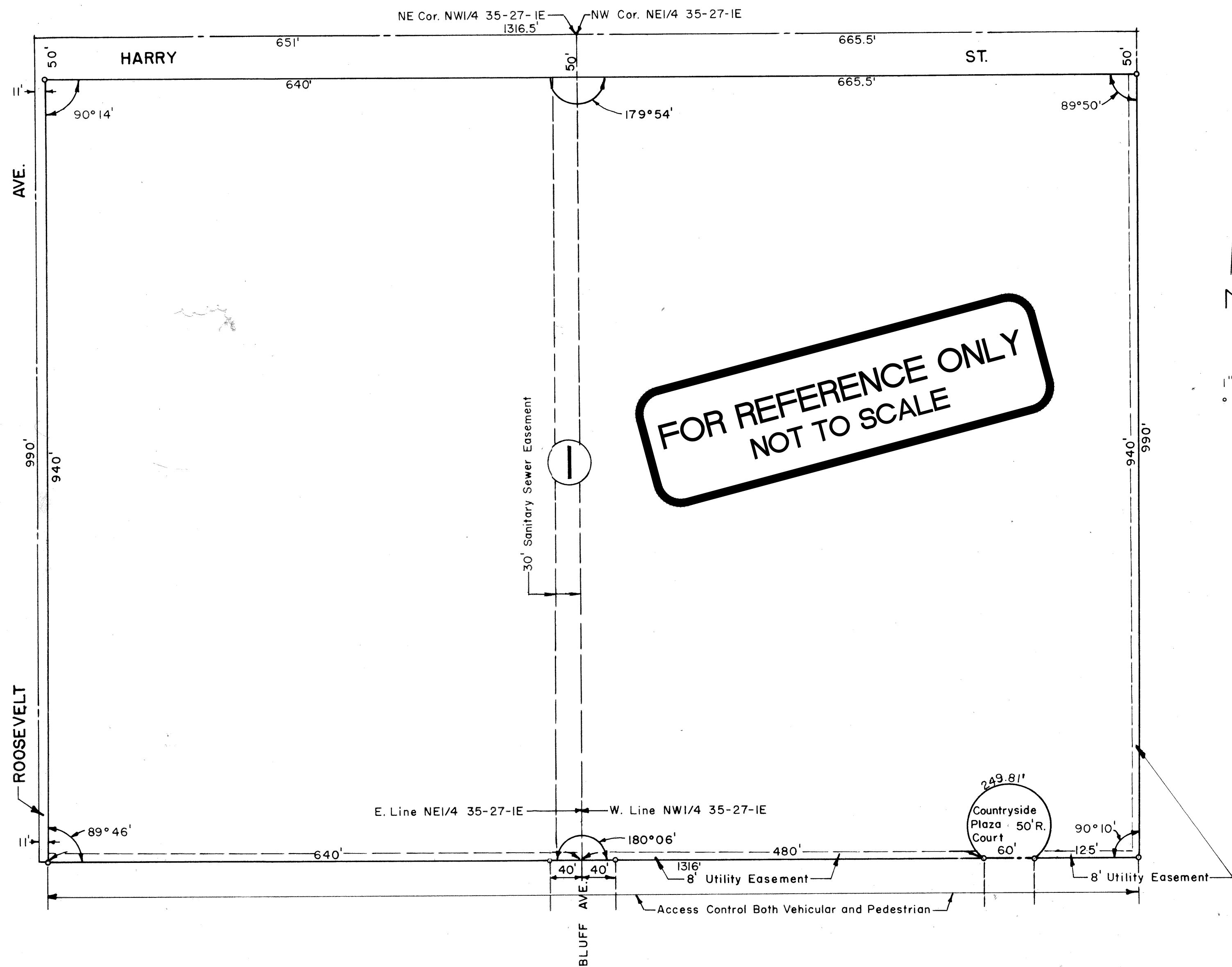
SITE GRADING PLAN
Scale 1"= 60'-0"

		WICHITA MALL GRADING PLAN	
Baughman Company, P.A. 315 Elm St. Wichita, KS 67211 F 316.262.2721 F 316.262.0149 ENGINEERING SURVEYING PLANNING LANDSCAPE ARCHITECTURE			
PROJECT NUMBER	DESIGN	TJW	DRAWN
REVISIONS:	APPROVED	TJW	DATE
	AS SHOWN		APRIL 2017
	SHEET	1 OF 1	
© Baughman Wichita Mall Engineering/WN Inc.		1347-E931	

MC 7-15

WOOD PLAZA

AN ADDITION TO WICHITA, SEDGWICK COUNTY, KANSAS



Know all men by these presents that Farm & Ranch Life Insurance Company, Inc., by ROBERT A. FINNEY, PRESIDENT, mortgagee of the land described in the Civil Engineer's Certificate, does hereby consent to the platting of "WOOD PLAZA", an addition to Wichita, Sedgwick County, Kansas.

Farm & Ranch Life Insurance Company, Inc.
Robert A. Finney, PRESIDENT

ATTEST:
Clark L. Brandon Secretary
CLARK L. BRANDON

ROBERT A. FINNEY

State of Kansas) ss
County of Sedgwick)

Be it remembered that on this 5th day of October, 1965, before me, the undersigned, a notary public in and for the county and state aforesaid, came ROBERT A. FINNEY, PRESIDENT of Farm & Ranch Life Insurance Company, Inc., a corporation, to me personally known to be the same person who executed the within instrument as PRESIDENT of said corporation, and such person duly acknowledged the execution of the same as PRESIDENT, for and on behalf of, and as the act and deed of said corporation. In testimony whereof, I have hereunto set my hand and affixed my notarial seal the day and year above written.

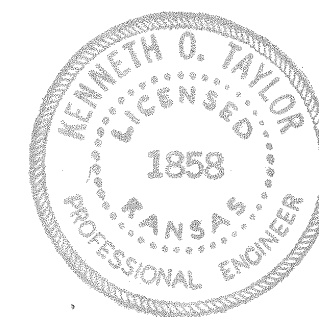
Eulalia De Haas Notary Public

My Commission expires 9-19-69 Eulalia De Haas

State of Kansas) ss
County of Sedgwick)

I, Kenneth O. Taylor, Civil Engineer in said State and County, do hereby certify that I have surveyed and platted "WOOD PLAZA", an Addition to Wichita, Sedgwick County, Kansas, and that the accompanying plat is a true and correct exhibit of said survey described as follows: The north 990 feet of the W $\frac{1}{2}$ of the N $\frac{1}{2}$ of the W $\frac{1}{2}$ of the NE $\frac{1}{4}$ of Section 35, T27S, R1E of the 6th P.M. and the north 990 feet of the NE $\frac{1}{4}$ of the NW $\frac{1}{4}$, except the west 680 feet thereof, Section 35, T27S, R1E of the 6th P.M.

Kenneth O. Taylor Civil Engineer
KENNETH O. TAYLOR



Know all men by these presents that Sports Center, Inc., by George P. Consolver, President, has caused the land described in the Civil Engineer's Certificate to be platted into a block, streets and avenues, to be known as "WOOD PLAZA", an Addition to Wichita, Sedgwick County, Kansas. Utility easements as indicated on the plat are hereby granted for the construction and maintenance of all public utilities. The streets and avenues are hereby dedicated to and for the use of the public. Full access control (both pedestrian and vehicular) from Block 1, WOOD PLAZA to any lot in Block 3, Grandview Heights Addition; any lot in Consolver 1st Addition; and to Bluff Avenue and Broadway Avenue; is hereby granted to the public.

Sports Center, Inc.
George P. Consolver President
George P. Consolver

ATTEST:
Walter C. Hilke Secretary
WALTER C. HILKE

State of Kansas) ss
County of Sedgwick)

Be it remembered, that on this 5th day of October, 1965, before me the undersigned, a Notary Public in and for the County and State aforesaid, came George P. Consolver, President of Sports Center, Inc., a Corporation, to me personally known to be the same person who executed the within instrument as President of said corporation, and such person duly acknowledged the execution of the same as President, for and on behalf of, and as the act and deed of said corporation. In testimony whereof, I have hereunto set my hand and affixed my official seal the day and year above written.

Leona F. Griffiths Notary Public
LEONA F. GRIFFITHS

My Commission expires Aug. 18, 1967

This plat of "WOOD PLAZA", an Addition to Wichita, Sedgwick County, Kansas, has been approved by the Wichita-Sedgwick County Metropolitan Area Planning Commission Wichita, Kansas, and is hereby transmitted to the Board of Commissioners of the City of Wichita, Kansas, with the recommendation that such plat be approved as proposed.

Dated this 16th day of September, 1965.

Wichita-Sedgwick County Metropolitan Area Planning Commission

By John W. Trout Jr. Chairman
C. Berkeley Foster Secretary
JOHN W. TROUT JR.
C. BERKELEY FOSTER

Approved by the Board of City Commissioners this 2nd day of November, 1965.

Wm. Tarrant Mayor
Ralph Eberley City Clerk
WM. TARRANT
RALPH EBERLEY

Approved by the Board of County Commissioners this 4th day of December, 1965.

Elmer S. Peters Chairman
Earl E. Rush Commissioner
ELMER S. PETERS
EARL E. RUSH

Marie Warden County Clerk
MARIE WARDEN
Entered on transfer record this 6th day of Dec, 1967.
Marie Warden County Clerk
MARIE WARDEN

State of Kansas) ss
County of Sedgwick)

This is to certify that this instrument was filed for record in the Register of Deeds Office on the 6th day of December, 1967, at 2:00 o'clock, and is duly recorded. 1 P.M.

Rufus E. Deering Register of Deeds
Pearl A. Gilbert Deputy
RUFUS DEERING
PEARL A. GILBERT

Baughman Company, P.A.
1518 E. 15th St., Wichita, Kansas 67214
INCORPORATED IN KANSAS
Baughman

WOOD PLAZA ADDITION
Copy of PLAT