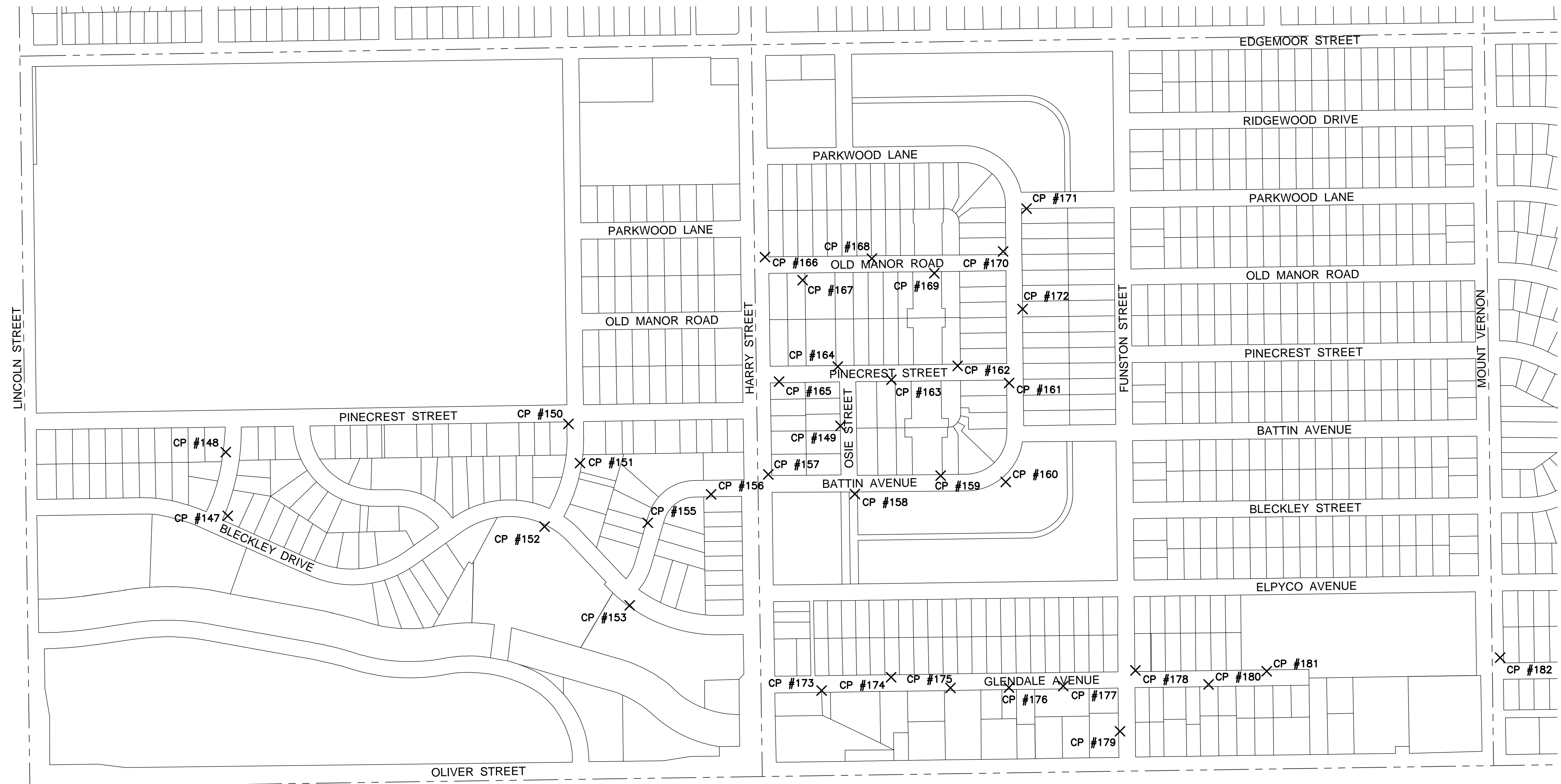


PLOTTED: Wednesday, September 13, 2017 @ 11:05AM

J:\PROJECTS\2016\1601010289_SILVERDALE WATER MAIN REPLACEMENT_160289 CAD\SHOTS\505 CIVIL\WTRPHASE 1\16289-CV-01.DWG

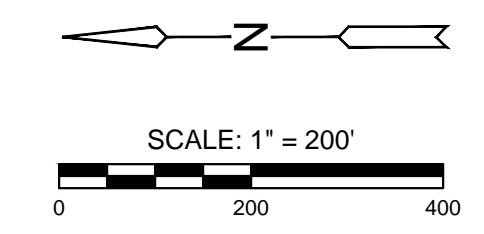


CONTROL POINTS			
Point #	Northing	Easting	Desc.
147	1680166.76	1666473.30	CP147 / 60D SET
148	1680174.15	1666703.83	CP148 / 60D SET
149	1677948.89	1666798.77	CP-149 / 60D SET
150	1678933.32	1666806.17	CP150 / 60D SET
151	1678891.63	1666664.01	CP151 / 60D SET
152	1679019.97	1666434.07	CP152 / 60D SET
153	1678711.66	1666149.10	CP153 / 60D SET
155	1678646.37	1666448.02	CP155 / 60D SET
156	1678417.02	1666550.99	CP156 / 60D SET

CONTROL POINTS			
Point #	Northing	Easting	Desc.
157	1678210.07	1666623.27	CP157 / 60D SET
158	1677896.66	1666552.14	CP158 / 60D SET
159	1677585.95	1666618.84	CP159 / 60D SET
160	1677350.35	1666595.91	CP160 / 60D SET
161	1677338.15	1666954.14	CP161 / 60D SET
162	1677524.57	1667016.22	CP162 / 60D SET
163	1677764.56	1666965.97	CP163 / 60D SET
164	1677958.30	1667013.59	CP164 / 60D SET
165	1678171.03	1666959.17	CP165 / 60D SET

CONTROL POINTS			
Point #	Northing	Easting	Desc.
166	1678222.08	1667409.97	CP166 / 60D SET
167	1678085.90	1667326.47	CP167 / 60D SET
168	1677834.93	1667404.56	CP168 / 60D SET
169	1677608.92	1667351.35	CP169 / 60D SET
170	1677360.10	1667430.32	CP170 / 60D SET
171	1677275.10	1667585.37	CP171 / 60D SET
172	1677289.33	1667221.93	CP172 / 60D SET
173	1678017.05	1665840.71	CP173 / 60D SET
174	1677765.36	1665888.96	CP174 / 60D SET

CONTROL POINTS			
Point #	Northing	Easting	Desc.
175	1677550.56	1665850.21	CP175 / 60D SET
176	1677338.61	1665851.61	CP176 / 60D SET
177	1677142.30	1665856.94	CP177 / 60D SET
178	1676880.90	1665913.47	CP178 / 60D SET
179	1676936.84	1665693.00	CP179 / 60D SET
180	1676615.93	1665862.80	CP180 / 60D SET
181	1676405.60	1665910.51	CP181 / 60D SET



WATER MAIN REPLACEMENT PLANS FOR
SILVERDALE ADDITION PART A

©2017 MKEC Engineering All Rights Reserved www.mkec.com
 These drawings and their contents, including, but not limited to, all concepts, designs, & ideas are the exclusive property of MKEC Engineering (MKEC), and may not be used or reproduced in any way without the express consent of MKEC.

NORTHWEST CONTROL

PROJECT NO.	448-90720	
DATE	SEPT. 2017	
SCALE	1" = 200'	
DESIGNED	DRAWN	CHECKED
DFL	JWC	GJA

NO.	REVISION	DATE