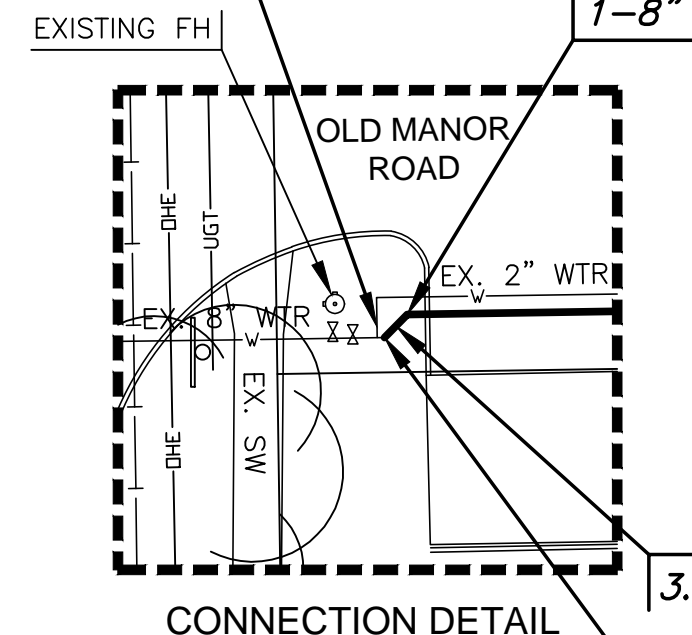


J:\PROJECTS\2017\1601010289_SILVERDALE WATER MAIN REPLACEMENT_160289 CAD\SHS\05 CIVIL\WTRPHASE 1\16289-CP-104.DWG
 PLOTTED: Wednesday, September 13, 2017 @ 11:17 AM

WATER MAIN REPLACEMENT PLANS FOR
SILVERDALE ADDITION PART A

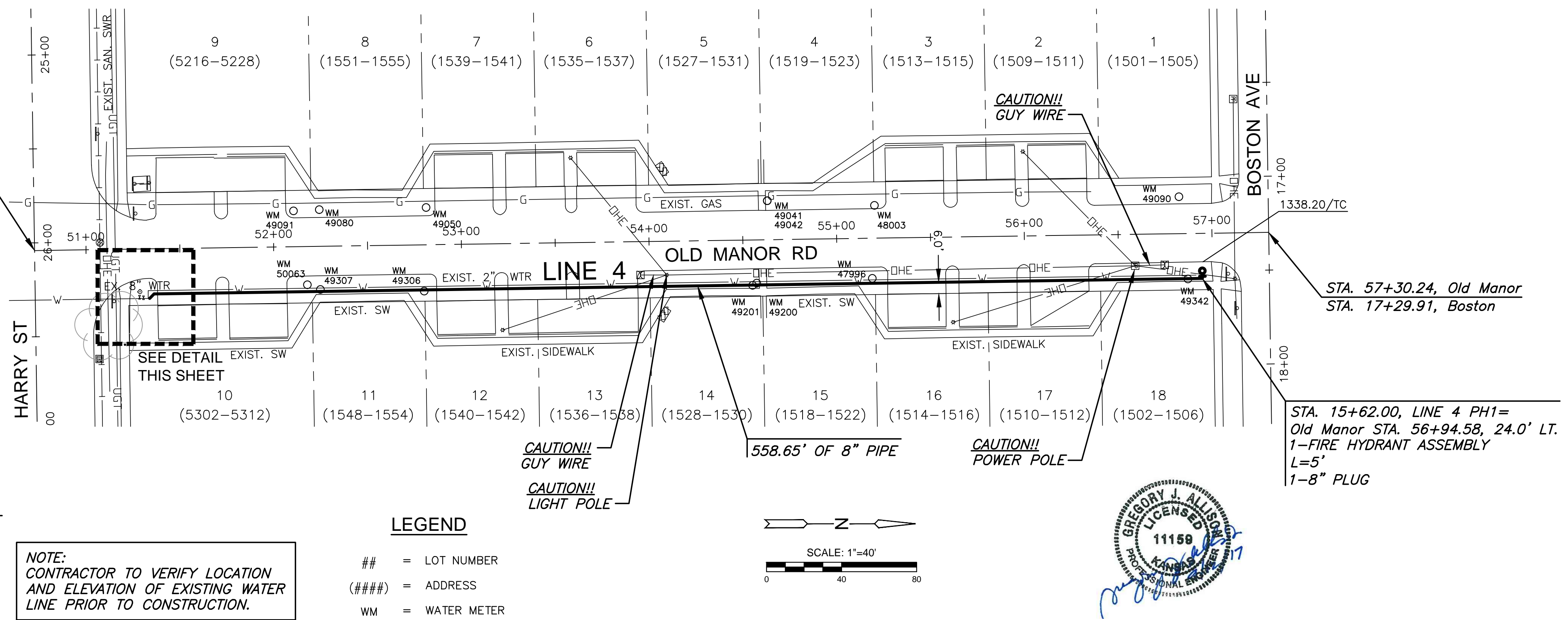
REMOVE PORTION OF
 2" WATER LINE AND
 PLUG TEE (W). CAP
 EXPOSED END OF
 EXIST. 2" WATER LINE.



STA. 10+03.35, LINE 4 PH1=
 Old Manor STA. 51+35.93, 24.0' LT.
 1-8" DIMJ 45° BEND

STA. 10+00.00, LINE 4 PH1=
 Old Manor STA. 51+33.56, 26.4' LT.
 REMOVE EXISTING CAP & INSTALL
 1-8" DIMJ 45° BEND

STA. 50+72.56, Old Manor
 STA. 26+04.12, Harry

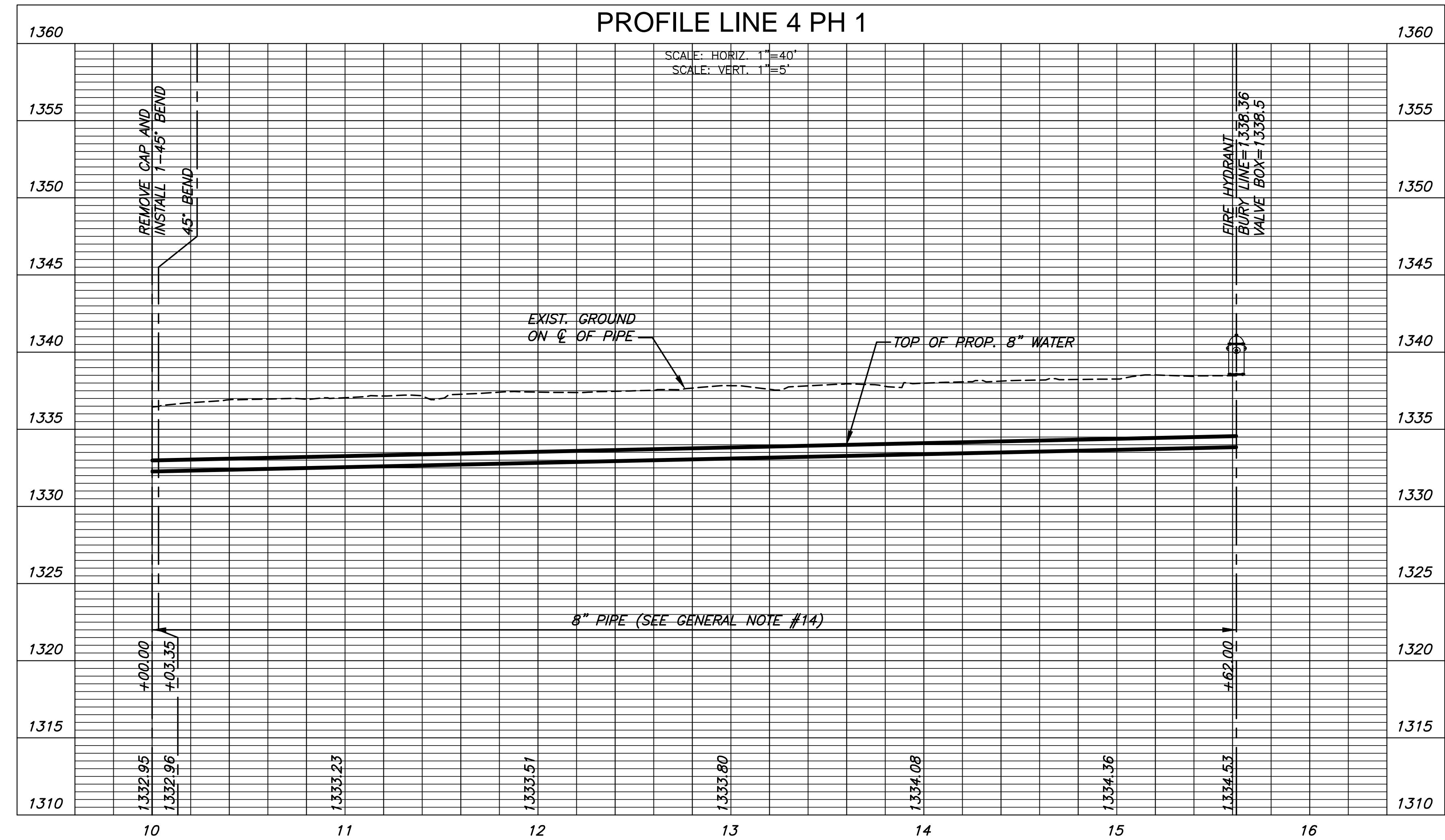


NOTE:
 CONTRACTOR TO VERIFY LOCATION
 AND ELEVATION OF EXISTING WATER
 LINE PRIOR TO CONSTRUCTION.

- LEGEND**
- ## = LOT NUMBER
 - (####) = ADDRESS
 - WM = WATER METER



PLAN LINE 4 PH 1
PROFILE LINE 4 PH 1



©2017
 MKEC Engineering
 All Rights Reserved
 www.mkec.com
 These drawings and their contents,
 including, but not limited to, all concepts,
 designs, & ideas are the exclusive
 property of MKEC Engineering (MKEC),
 and may not be used or reproduced in any
 way without the express consent of MKEC.

WATER LINE 4

PROJECT NO.	448-90720	
DATE	SEPT. 2017	
SCALE	1" = 40'	
DESIGNED	DRAWN	CHECKED
DFL	JWC	GJA

NO.	REVISION	DATE

SHEET NO.