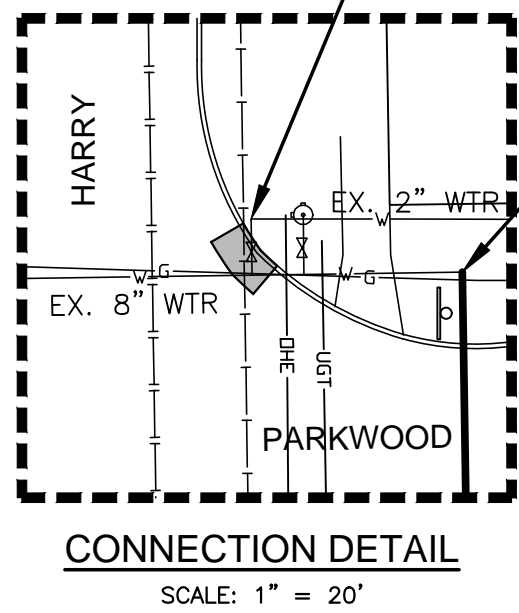
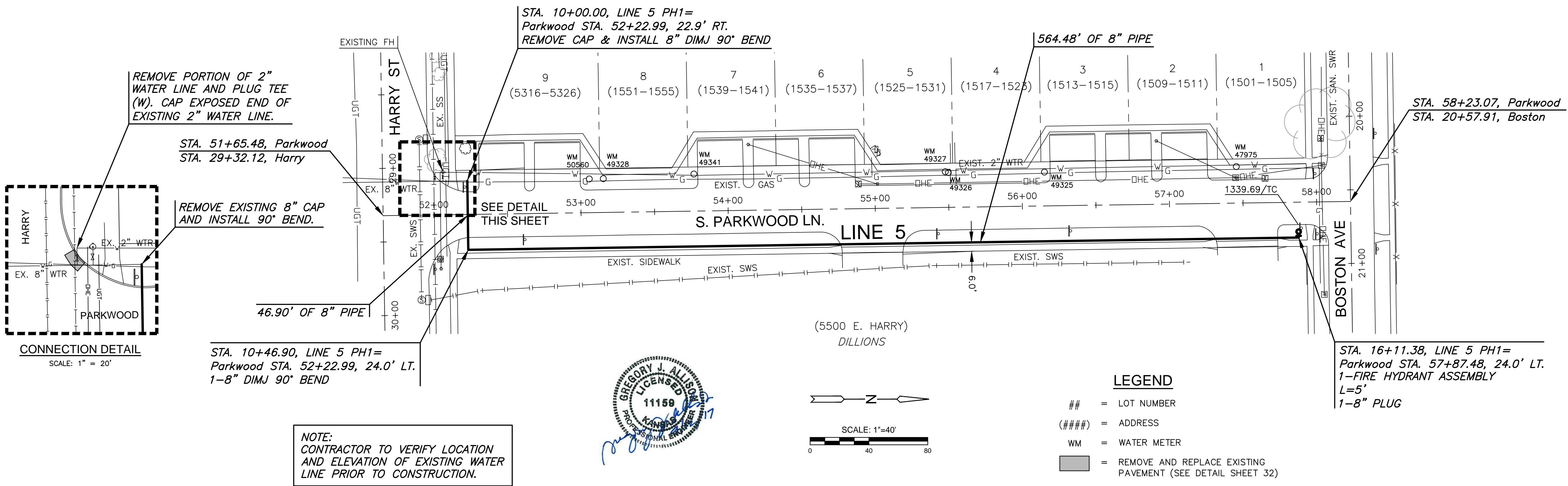


PLOTTED: Wednesday, September 13, 2017 @ 11:12AM

J:\PROJECTS\2017\1601010289_SILVERDALE WATER MAIN REPLACEMENT_160289 CAD\SHS\05 CIVIL\WTRPHASE 1\16289-CP-105.DWG



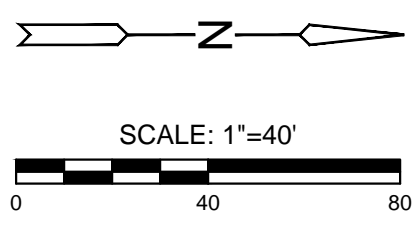
REMOVE PORTION OF 2" WATER LINE AND PLUG TEE (W). CAP EXPOSED END OF EXISTING 2" WATER LINE.

STA. 51+65.48, Parkwood
STA. 29+32.12, Harry

REMOVE EXISTING 8" CAP AND INSTALL 90° BEND.

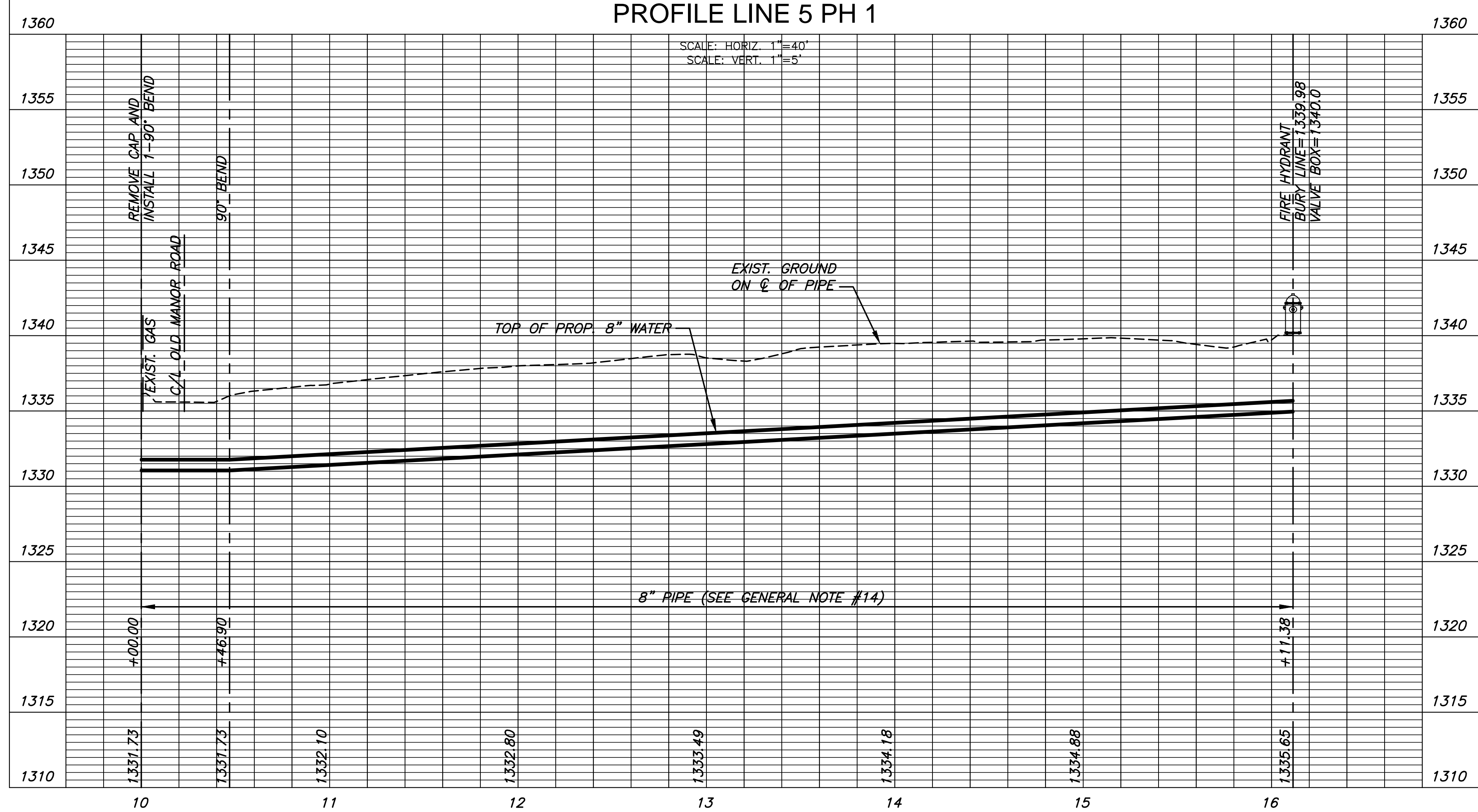
STA. 10+46.90, LINE 5 PH1 =
Parkwood STA. 52+22.99, 24.0' LT.
1-8" DIMJ 90° BEND

NOTE:
CONTRACTOR TO VERIFY LOCATION AND ELEVATION OF EXISTING WATER LINE PRIOR TO CONSTRUCTION.



- LEGEND**
- ## = LOT NUMBER
 - (###) = ADDRESS
 - WM = WATER METER
 - [Shaded Box] = REMOVE AND REPLACE EXISTING PAVEMENT (SEE DETAIL SHEET 32)

PLAN LINE 5 PH 1
PROFILE LINE 5 PH 1



WATER MAIN REPLACEMENT PLANS FOR
SILVERDALE ADDITION PART A

©2017 MKEC Engineering All Rights Reserved
www.mkec.com
These drawings and their contents, including, but not limited to, all concepts, designs, & ideas are the exclusive property of MKEC Engineering (MKEC), and may not be used or reproduced in any way without the express consent of MKEC.

WATER LINE 5

PROJECT NO.	448-90720	
DATE	SEPT. 2017	
SCALE	1" = 40'	
DESIGNED	DRAWN	CHECKED
DFL	JWC	GJA

NO.	REVISION	DATE

SHEET NO.