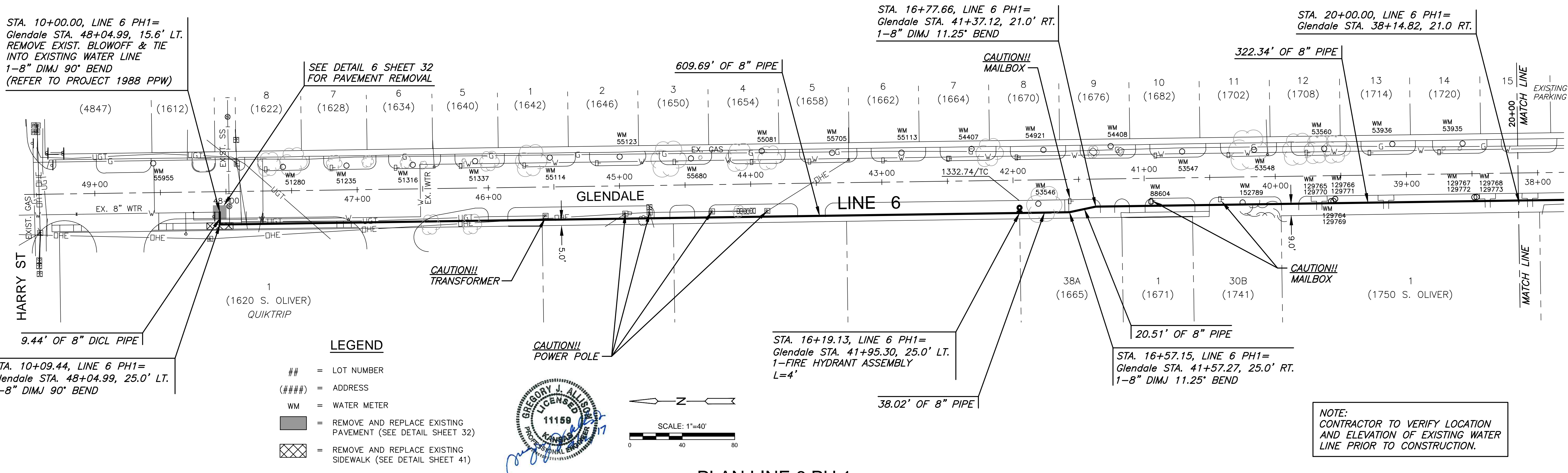
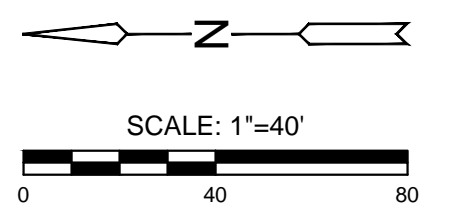


J:\PROJECTS\2017\1601010289_SILVERDALE WATER MAIN REPLACEMENT_160289 CAD\SHOTS\05 CIVIL\WTRPHASE 1\16289-CP-106.DWG
 PLOTTED: Wednesday, September 13, 2017 @ 11:33AM

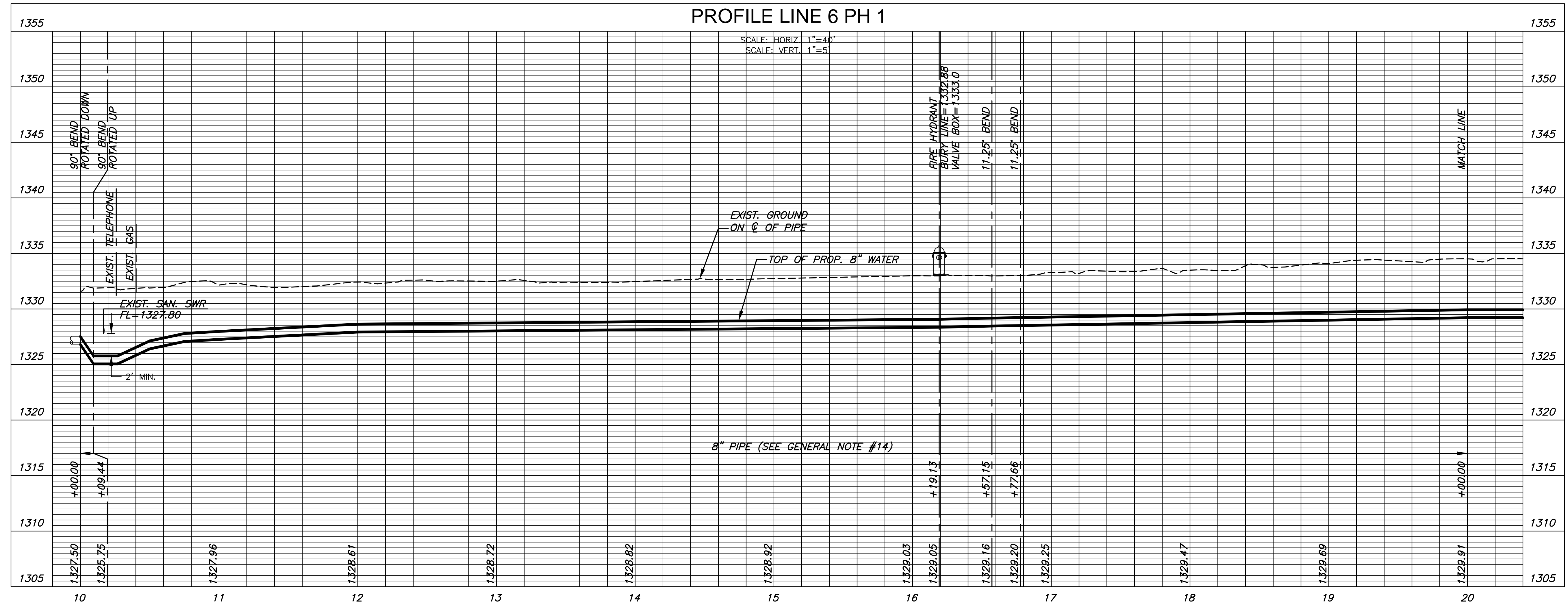


- LEGEND**
- ## = LOT NUMBER
 - (####) = ADDRESS
 - WM = WATER METER
 - [Hatched Box] = REMOVE AND REPLACE EXISTING PAVEMENT (SEE DETAIL SHEET 32)
 - [Cross-hatched Box] = REMOVE AND REPLACE EXISTING SIDEWALK (SEE DETAIL SHEET 41)



NOTE:
CONTRACTOR TO VERIFY LOCATION AND ELEVATION OF EXISTING WATER LINE PRIOR TO CONSTRUCTION.

PLAN LINE 6 PH 1
PROFILE LINE 6 PH 1



WATER MAIN REPLACEMENT PLANS FOR
SILVERDALE ADDITION PART A

©2017
 MKEC Engineering
 All Rights Reserved
 www.mkec.com
 These drawings and their contents, including, but not limited to, all concepts, designs, & ideas are the exclusive property of MKEC Engineering (MKEC), and may not be used or reproduced in any way without the express consent of MKEC.

WATER LINE 6

PROJECT NO.	448-90720	
DATE	SEPT. 2017	
SCALE	1" = 40'	
DESIGNED	DRAWN	CHECKED
DFL	JWC	GJA

NO.	REVISION	DATE

SHEET NO.