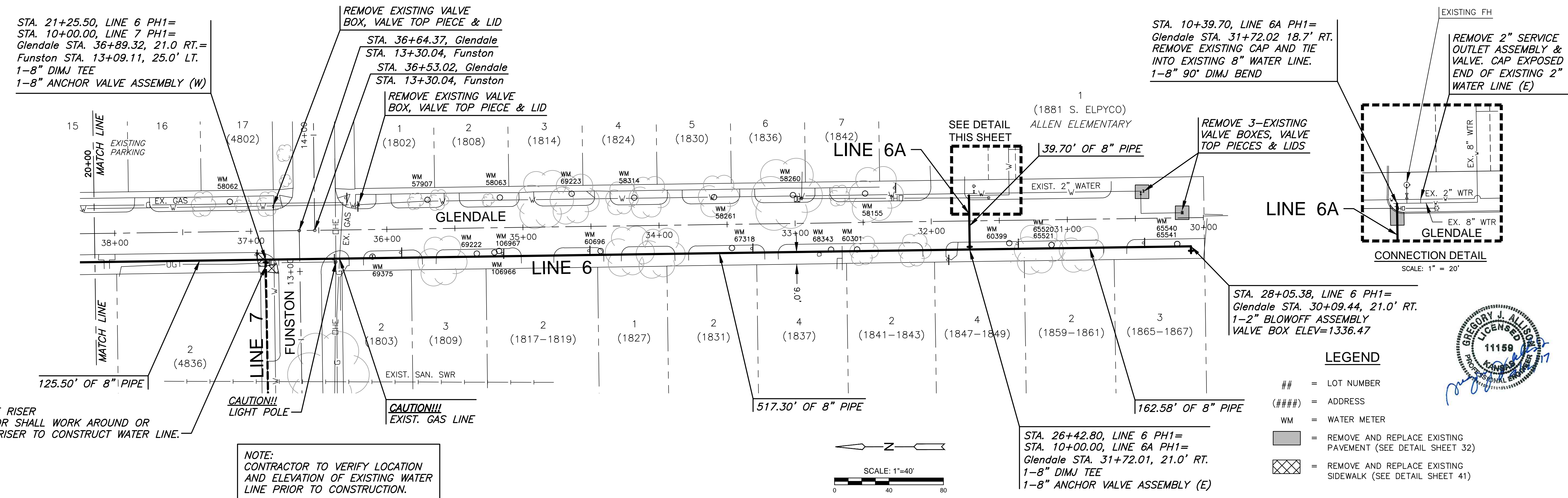


J:\PROJECTS\2017\1601010289\_SILVERDALE WATER MAIN REPLACEMENT\_160289 CAD\SHS\05 CIVIL\WTRPHASE 1\16289-CP-107.DWG  
 PLOTTED: Wednesday, September 13, 2017 @ 11:33AM



**CAUTION!!**  
 TELEPHONE RISER  
 CONTRACTOR SHALL WORK AROUND OR  
 SUPPORT RISER TO CONSTRUCT WATER LINE.

**CAUTION!!**  
 LIGHT POLE

**CAUTION!!!**  
 EXIST. GAS LINE

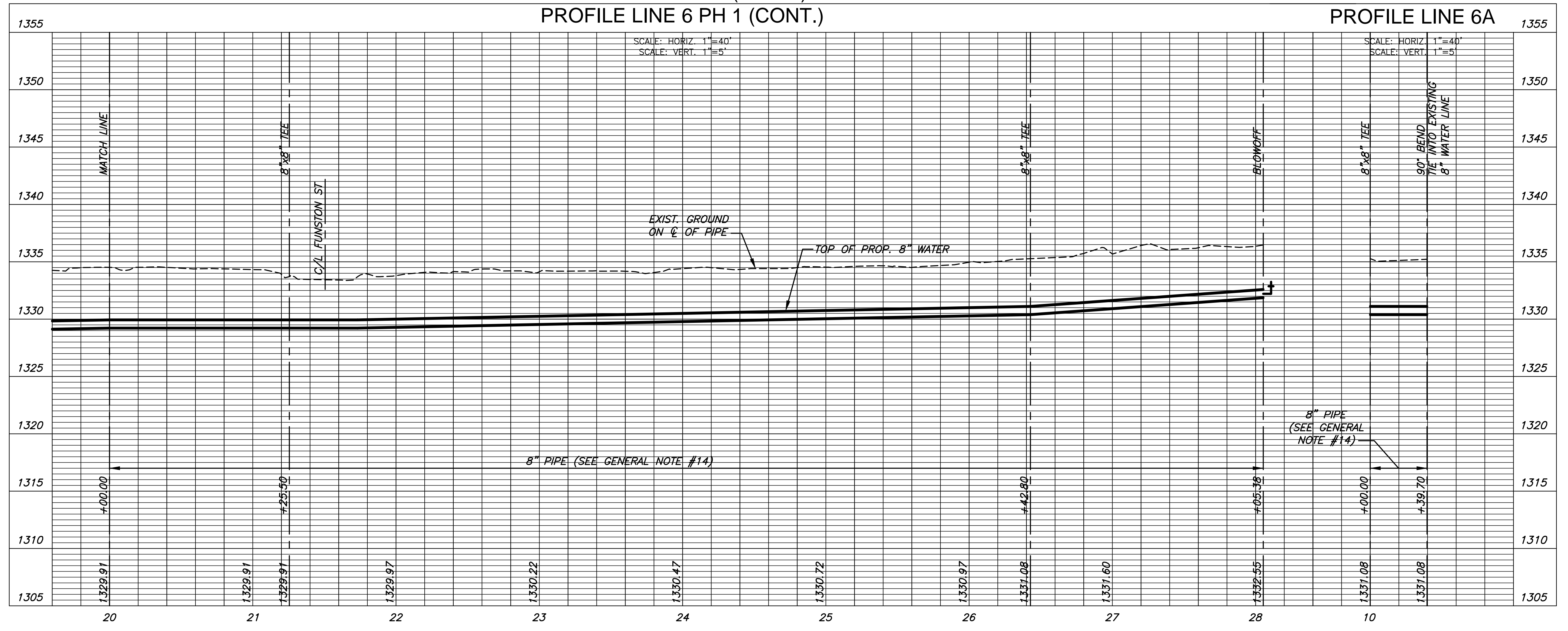
**NOTE:**  
 CONTRACTOR TO VERIFY LOCATION  
 AND ELEVATION OF EXISTING WATER  
 LINE PRIOR TO CONSTRUCTION.

- LEGEND**
- ## = LOT NUMBER
  - (###) = ADDRESS
  - WM = WATER METER
  - [Hatched Box] = REMOVE AND REPLACE EXISTING PAVEMENT (SEE DETAIL SHEET 32)
  - [Cross-hatched Box] = REMOVE AND REPLACE EXISTING SIDEWALK (SEE DETAIL SHEET 41)



**PLAN LINE 6 PH 1 (CONT.)**  
**PROFILE LINE 6 PH 1 (CONT.)**

**PLAN LINE 6A**  
**PROFILE LINE 6A**



WATER MAIN REPLACEMENT PLANS FOR  
**SILVERDALE ADDITION PART A**

©2017  
 MKEC Engineering  
 All Rights Reserved  
 www.mkec.com  
 These drawings and their contents, including, but not limited to, all concepts, designs, & ideas are the exclusive property of MKEC Engineering (MKEC), and may not be used or reproduced in any way without the express consent of MKEC.

**WATER LINE 6 (CONT.)**

|             |            |
|-------------|------------|
| PROJECT NO. | 448-90720  |
| DATE        | SEPT. 2017 |
| SCALE       | 1" = 40'   |
| DESIGNED    | DFL        |
| DRAWN       | JWC        |
| CHECKED     | GJA        |

| NO. | REVISION | DATE |
|-----|----------|------|
|     |          |      |