

# ST. FRANCIS RELIEF SANITARY SEWER - PHASE I

IN THE ALLEY BETWEEN EMPORIA AND ST. FRANCIS,  
FROM SOUTH OF CENTRAL TO THE NORTH SIDE OF PINE

CITY OF WICHITA, KANSAS

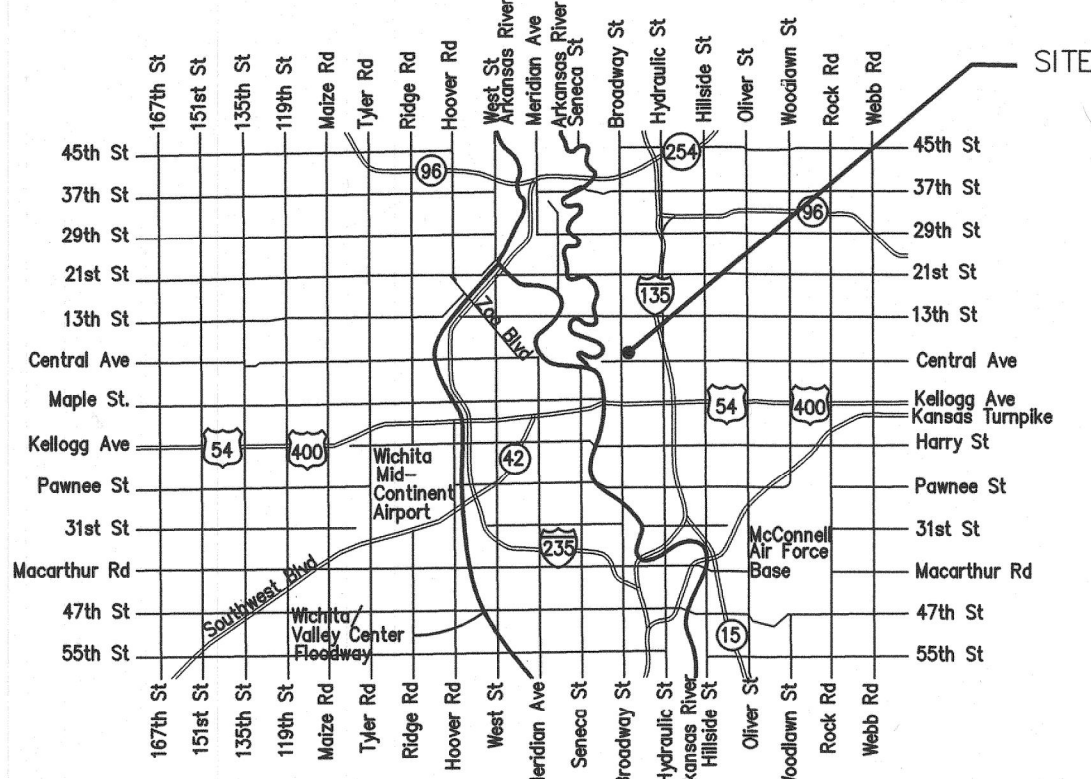
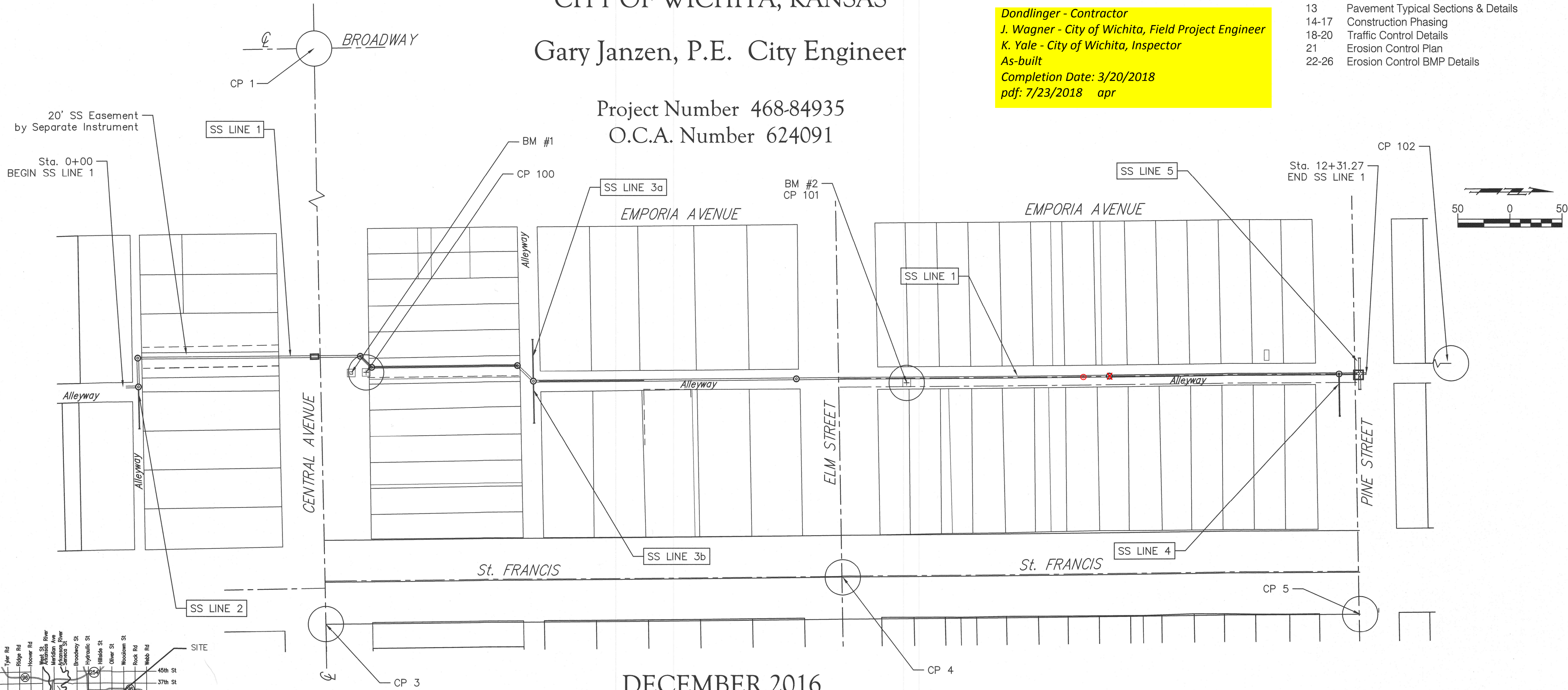
Gary Janzen, P.E. City Engineer

Project Number 468-84935  
O.C.A. Number 624091

**Dondlinger - Contractor**  
**J. Wagner - City of Wichita, Field Project Engineer**  
**K. Yale - City of Wichita, Inspector**  
As-built  
Completion Date: 3/20/2018  
pdf: 7/23/2018 apr

## Sheet Index

- 1 Title Sheet
- 2 General Notepage & Quantity Recap
- 3-6 Sanitary Sewer Plan and Profile Sheets
- 7-8 Diversion Structure Details
- 9 Precast Manhole Details
- 10 Reinforced Concrete Manhole Detail
- 11 Manhole Frame & Cover Detail
- 12 Connection Details
- 13 Pavement Typical Sections & Details
- 14-17 Construction Phasing
- 18-20 Traffic Control Details
- 21 Erosion Control Plan
- 22-26 Erosion Control BMP Details



Vicinity Map

DECEMBER 2016

### CONTROL POINTS

POINT NUMBER	DESCRIPTION	ELEV. NORTHING	EASTING
1	CL's Central & Broadway	4938.03	9056.78
2	Thimble, CL's Central & Washington	4988.78	11707.91
3	Thimble, CL Central at EL St. Francis	4961.00	10240.97
4	Thimble, CL Elm at CL St. Francis	5457.48	10196.74
5	Thimble, CL Pine and 41.0' East of CL St. Francis	5953.62	10232.30
100	"+" Cut in Sidewalk, NS Central, WS Alley between Emporia & St. Francis	1300.15	5000.00
101	"+" Cut in ES Alley Pavement 28' N of NL Elm, between Emporia & St. Francis	1300.15	5518.85
102	"+" Cut in WS Alley Pavement 147' N of NL Pine, between Emporia & St. Francis	1301.92	6118.69

### Benchmarks

BM #1 - "□" Cut in Top of Curb, West Side of driveway on north side of Central 1/2 way between Emporia & St. Francis Elev. = 1299.92 NAVD '88"

BM #2 - CP Cross in Pavement East Side of Alley between Emporia and St. Francis, 28' north of Nl Elm (CP #101)  
Elev. = 1300.15 88 NAVD

