

THE GATEWAY CENTER 2ND ADDITION

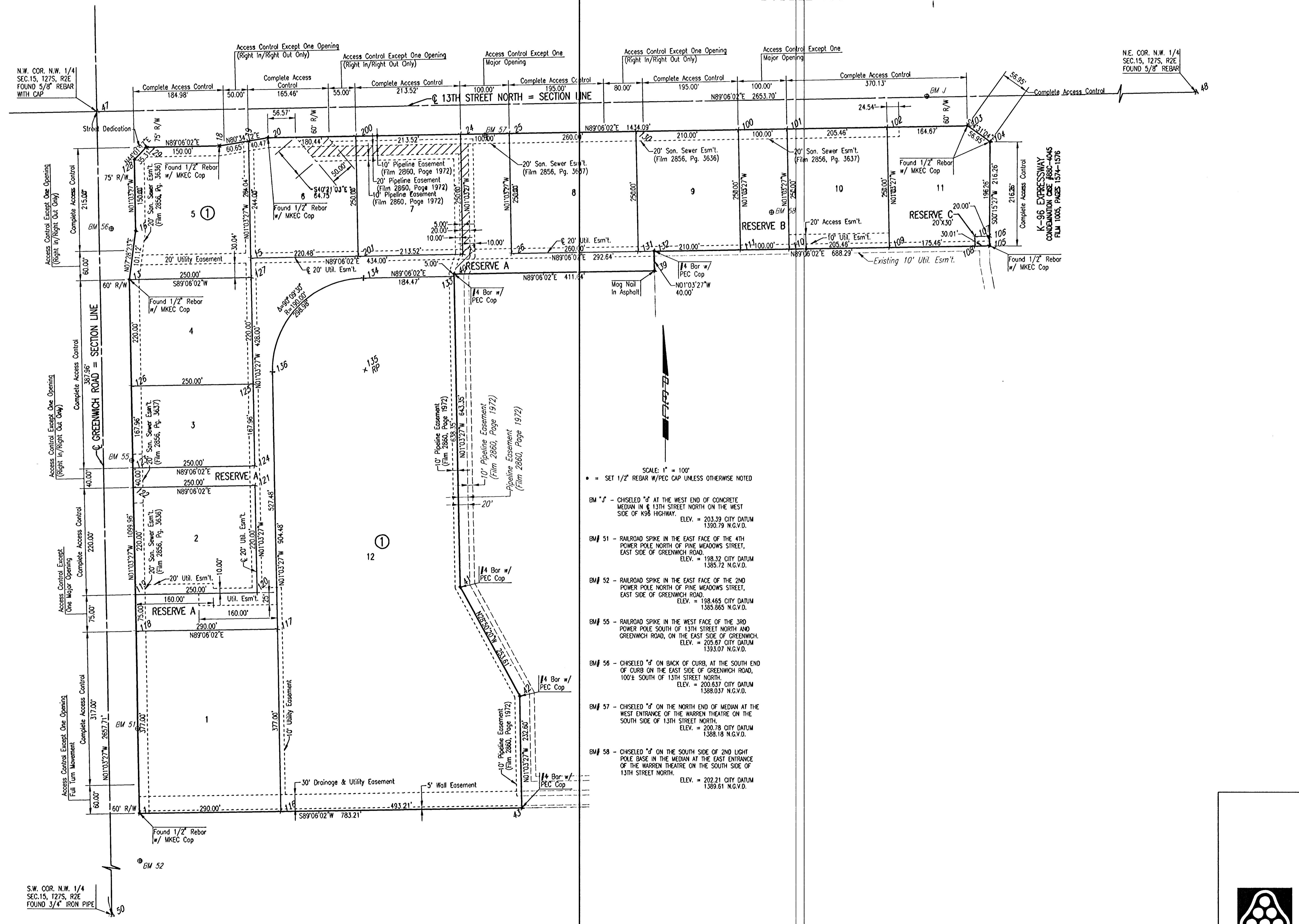
AN ADDITION TO WICHITA, SEDGWICK COUNTY, KANSAS

BUBBLE MAP

24 25 1
14 05 14
2022

COORDINATE LIST		
POINT	NORTH	EAST
1	1,693,030.8409	1,686,380.1222
13	1,694,130.6161	1,686,359.8191
15	1,694,174.5749	1,686,609.0502
18	1,694,408.5943	1,686,544.7190
19	1,694,418.5310	1,686,604.5465
20	1,694,425.1618	1,686,644.4700
23	1,694,181.3875	1,687,042.9967
24	1,694,431.3459	1,687,038.3822
25	1,694,432.9156	1,687,138.3699
26	1,694,182.9573	1,687,142.9844
39	1,694,147.5575	1,687,436.3260
40	1,694,141.0959	1,687,024.7367
41	1,693,497.8555	1,687,036.6117
42	1,693,275.8933	1,687,158.3423
43	1,693,043.1350	1,687,163.2356
47	1,694,479.6576	1,686,293.3652
48	1,694,521.3126	1,688,946.7336
50	1,691,822.4037	1,686,342.4211
100	1,694,440.2933	1,687,608.3120
101	1,694,441.8630	1,687,708.2997
102	1,694,445.0882	1,687,913.7368
103	1,694,447.6731	1,688,078.3837
104	1,694,414.6147	1,688,124.7603
105	1,694,198.3551	1,688,123.7884
106	1,694,218.3589	1,688,123.8783
107	1,694,217.8879	1,688,093.8759
108	1,694,197.8841	1,688,093.7860
109	1,694,195.1299	1,687,918.3513
110	1,694,191.9047	1,687,712.9142
111	1,694,190.3350	1,687,612.9265
116	1,693,035.3931	1,686,670.0876
117	1,693,412.3303	1,686,663.1289
118	1,693,407.7781	1,686,373.1635
119	1,693,482.7656	1,686,371.7792
120	1,693,486.6899	1,686,621.7493
121	1,693,706.6533	1,686,617.6886
122	1,693,702.7290	1,686,367.7184
123	1,693,742.7223	1,686,366.9801
124	1,693,746.6466	1,686,616.9502
125	1,693,914.5770	1,686,613.8500
126	1,693,910.6527	1,686,363.8799
127	1,694,134.5403	1,686,609.7893
128	1,694,380.8516	1,686,370.2020
129	1,694,406.2398	1,686,394.7375
130	1,694,436.9969	1,687,398.3378
131	1,694,187.0385	1,687,402.9524
132	1,694,187.5509	1,687,435.5878
133	1,694,136.0968	1,687,024.8290
134	1,694,133.2010	1,686,840.3779
135	1,693,943.2244	1,686,843.3604
136	1,693,939.7174	1,686,653.3927
200	1,694,427.9942	1,686,824.8885
201	1,694,178.0359	1,686,829.5030

×100 = COORDINATE POINT NO.



- SCALE: 1" = 100'
- = SET 1/2" REBAR W/PEC CAP UNLESS OTHERWISE NOTED
 - BM "J" - CHISELED "J" AT THE WEST END OF CONCRETE MEDIAN IN 13TH STREET NORTH ON THE WEST SIDE OF K96 HIGHWAY. ELEV. = 203.39 CITY DATUM 1390.79 N.G.V.D.
 - BM# 51 - RAILROAD SPIKE IN THE EAST FACE OF THE 4TH POWER POLE NORTH OF PINE MEADOWS STREET, EAST SIDE OF GREENWICH ROAD. ELEV. = 198.32 CITY DATUM 1385.72 N.G.V.D.
 - BM# 52 - RAILROAD SPIKE IN THE EAST FACE OF THE 2ND POWER POLE NORTH OF PINE MEADOWS STREET, EAST SIDE OF GREENWICH ROAD. ELEV. = 198.465 CITY DATUM 1385.865 N.G.V.D.
 - BM# 55 - RAILROAD SPIKE IN THE WEST FACE OF THE 3RD POWER POLE SOUTH OF 13TH STREET NORTH AND GREENWICH ROAD, ON THE EAST SIDE OF GREENWICH. ELEV. = 205.67 CITY DATUM 1393.07 N.G.V.D.
 - BM# 56 - CHISELED "J" ON BACK OF CURB, AT THE SOUTH END OF CURB ON THE EAST SIDE OF GREENWICH ROAD, 100'± SOUTH OF 13TH STREET NORTH. ELEV. = 200.637 CITY DATUM 1388.037 N.G.V.D.
 - BM# 57 - CHISELED "J" ON THE NORTH END OF MEDIAN AT THE WEST ENTRANCE OF THE WARREN THEATRE ON THE SOUTH SIDE OF 13TH STREET NORTH. ELEV. = 200.78 CITY DATUM 1388.18 N.G.V.D.
 - BM# 58 - CHISELED "J" ON THE SOUTH SIDE OF 2ND LIGHT POLE BASE IN THE MEDIAN AT THE EAST ENTRANCE OF THE WARREN THEATRE ON THE SOUTH SIDE OF 13TH STREET NORTH. ELEV. = 202.21 CITY DATUM 1389.61 N.G.V.D.

Sowed 05-19-2005 2:47:40 PM by SW
 Plot Scale 1:100 06-22-2008 1:38:21 PM by SW
 G:\2008\06251\Site\06251-C-Plot

No.	Revision	By	Date
CHEDDAR'S THE GATEWAY CENTER 2ND ADDITION PLAT JAMES L. ARMOUR, P.E. - CITY ENGINEER CITY OF WICHITA PRIVATE PROJECT NO. 1675 PPS (607861)			
Professional Engineering Consultants, P.A. 303 S. TOPEKA • WICHITA, KANSAS 67202 316-262-2691 • FAX 316-262-3003			
Designed by	DWH	Job No.	35-06251
Drawn by	SAW	Date	June 2005
			SHEET NO. C6.1

14 05 14