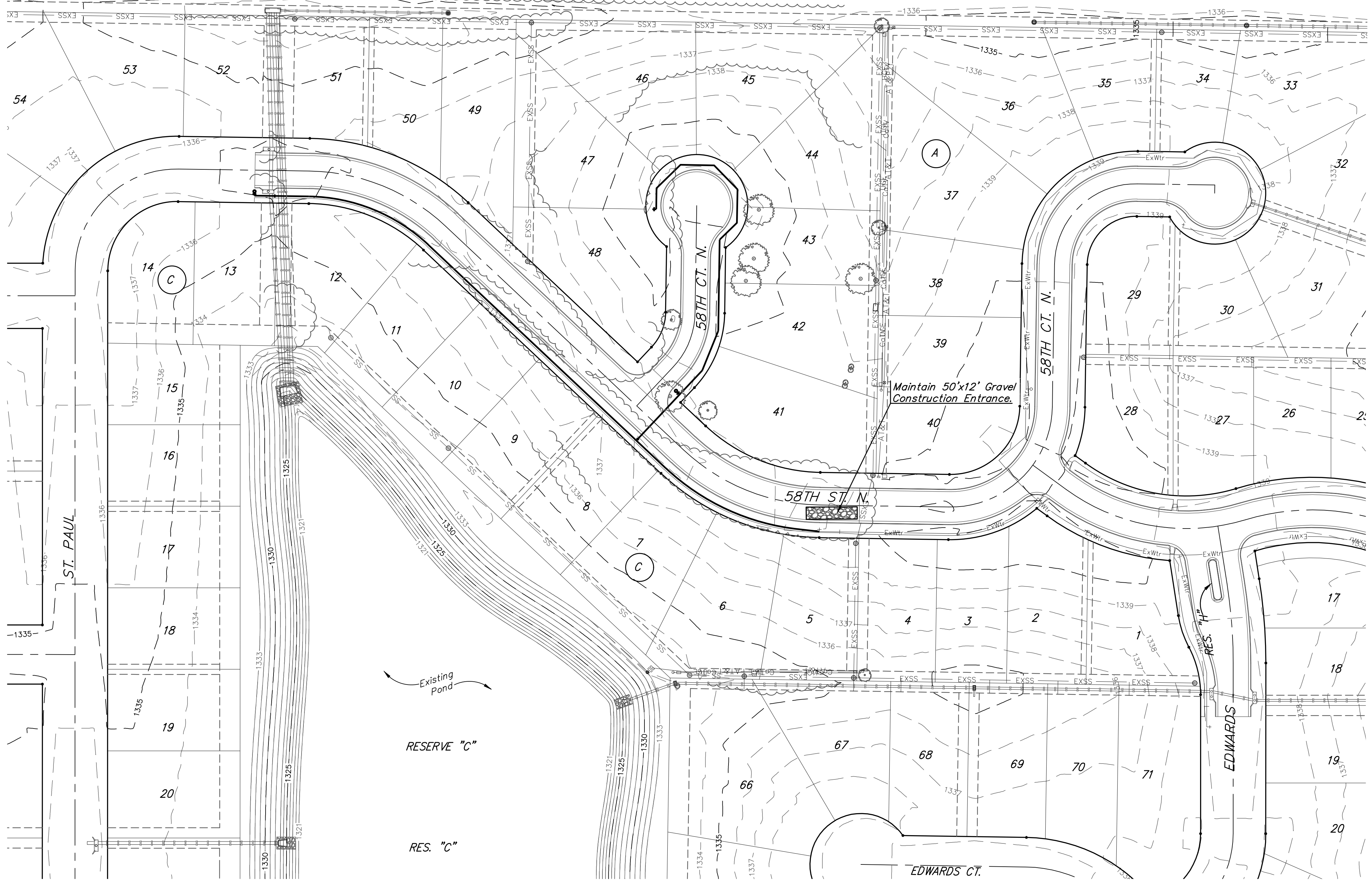
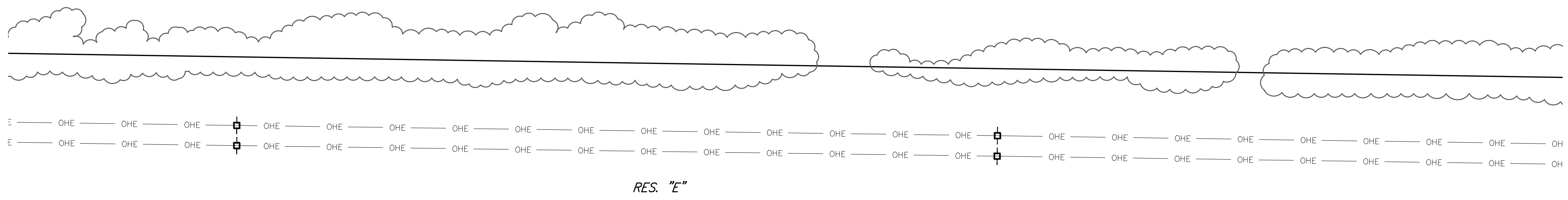
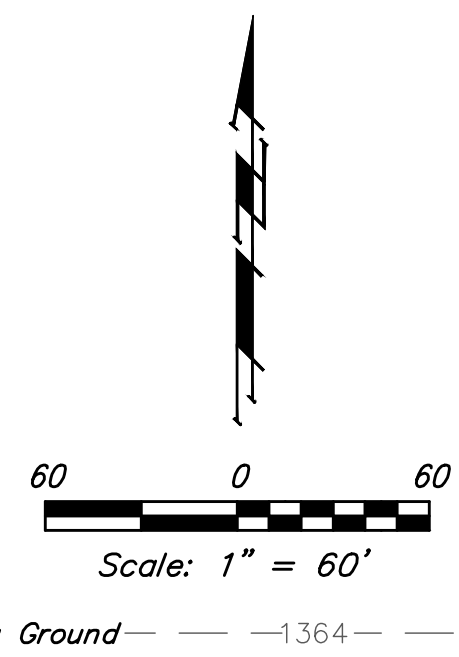


BENCHMARKS:
 BM #1: "□" Cut on top of SE Cor. of utility pad, adjacent to the SW Cor. Lot 40, Block A, Northgate Addition.
 Elev. = 1340.12 NGVD29

BM #2: "□" Cut on top of NE Cor. of water vault, 437± E. & 54± N. of S1/4 Cor., Sec. 13, TWP 26-S, R-1-W.
 Elev. = 1334.81 NGVD29

BM #3: "□" Cut on top of curb, adjacent to the SW Cor. Lot 17, Block D, Northgate Addition.
 Elev. = 1338.47 NGVD29



NOTES:
 Contractor shall make sure all erosion control is in place before project is accepted. This plan represents the minimum standard. Any additional erosion control measures shall be installed by the Contractor as needed.

All areas disturbed during construction shall be seeded, mulched, and fertilized as per Cover Sheet General Notes.

EROSION CONTROL MEASURE	INSTALL	MAINTAIN
CONSTRUCTION ENTRANCE (EA)	0	1
MAINTAIN EROSION CONTROL BMP's (LS)	0	1

* ALL EXISTING BMPs INCLUDING CONSTRUCTION ENTRANCE, SEDIMENT BARRIERS, SILT FENCE, CUT-OFF TRENCH, AND EROSION CONTROL MAT SHALL BE MAINTAINED AND REPAIRED IF NECESSARY.



Baughman Northgate Addition - Phase 2A
EROSION CONTROL
 Water Distribution System

Baughman Company, P.A. 315 Ellis St. Wichita, KS 67211 P 316-262-7271 F 316-262-0149
 ENGINEERING | SURVEYING | PLANNING | LANDSCAPE ARCHITECTURE

PROJECT NUMBER 448-90243	DESIGN DMV	DRAWN JAK
REVISIONS:	APPROVED	DATE 8/20/18
	SCALE Noted	SHEET 6 OF 13

C:\Projects\Northgate\Phase 2A\WTR\18044971\WTR PLANS.dwg