

STA. 0+17.9
INSTALL 56.02 L.F.
30" RCP (E)
INSTALL 29 S.Y.
LIGHT STONE RIP-ROP

STA. 0+00

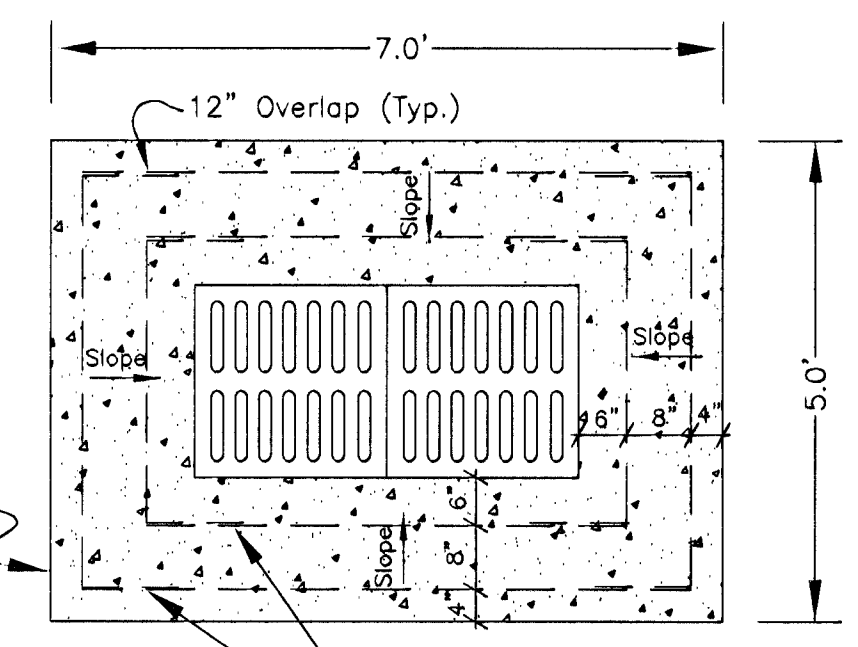
STA. 0+73.92
1-STD. DROP INLET (2x4)
(SEE DETAIL, THIS SHEET)
INSTALL 174.08 L.F. 24" RCP (E)

CONCRETE PAVEMENT &
CURB & GUTTER TO BE
REMOVED AS NECESSARY
AND NOT REPLACED

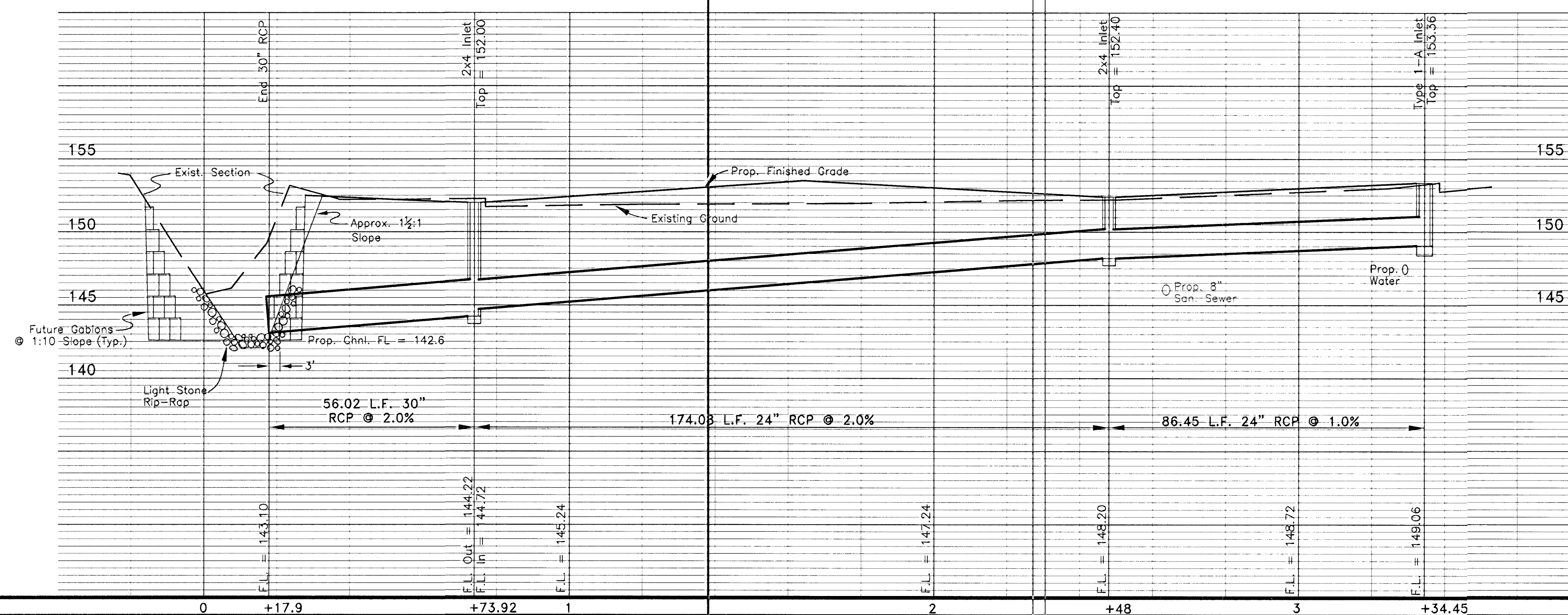
STA. 2+48
1-STD. DROP INLET (2x4)
(SEE DETAIL, THIS SHEET)
INSTALL 86.45 L.F. 24" RCP (E)

CAUTION--
8" SAN.
SEWER

STA. 3+34.45
SAW CUT & REMOVE EXIST. CURB & GUTTER
AND PAVEMENT TO LIMITS OF INLET HOOK-UP.
1-STD. TYPE 1-A CURB INLET
L = 11'-4"; W = 4'-4"; TOP = 153.36
CONSTRUCT INLET HOOK-UP.



CONCRETE PAVEMENT FOR
STANDARD 2x4 DROP INLET
1" = 2'



STORM SEWER PLAN & PROFILE

MOEHRING & ASSOCIATES
CONSULTING ENGINEERS - SURVEYORS
433 S. HYDRAULIC WICHITA, KS.
(316) 263-8291

PRIVATE PROJ. NO. 647PPS / INDEX NO. 607861
DATE: JULY 1996

