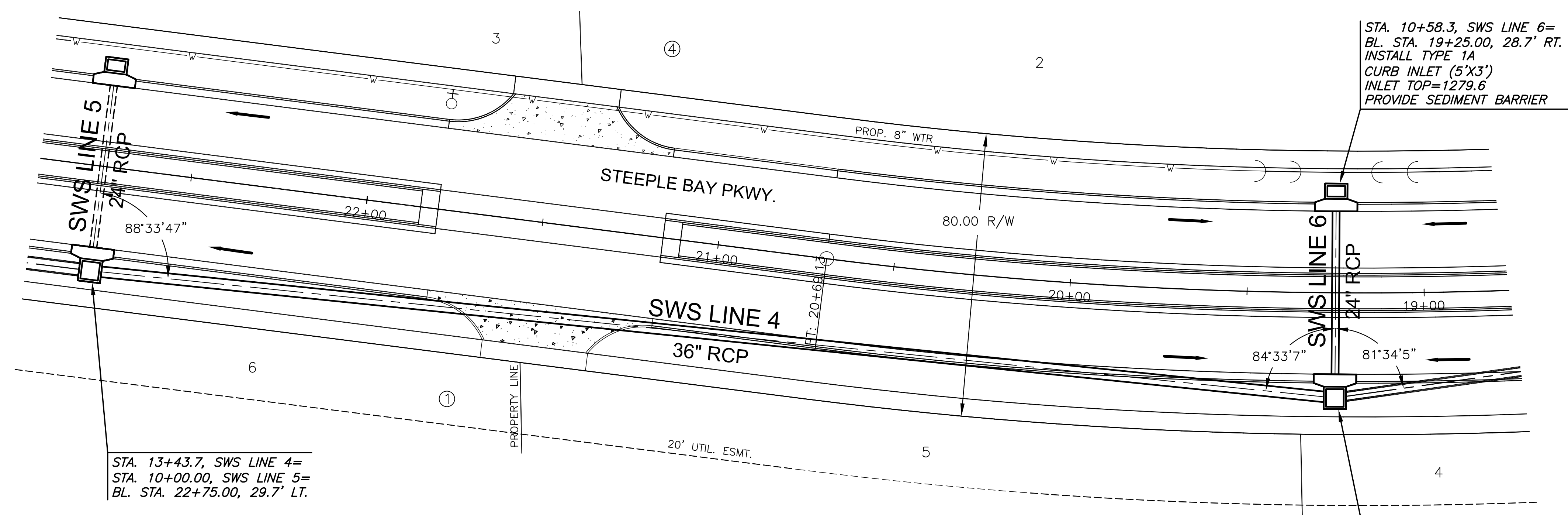


PLOTTED: Wednesday, August 22, 2018 @ 08:57AM



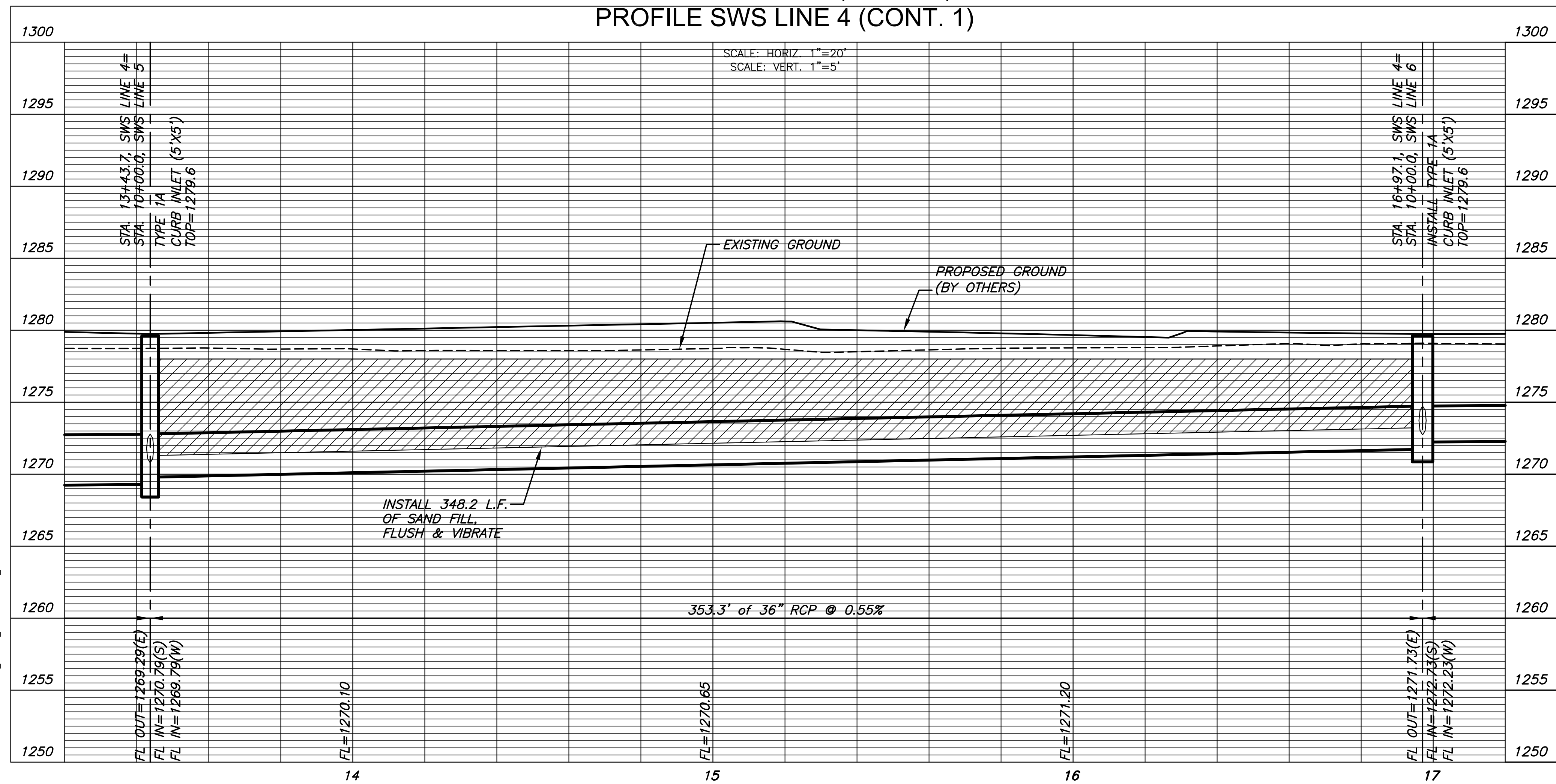
STA. 13+43.7, SWS LINE 4=
STA. 10+00.00, SWS LINE 5=
BL. STA. 22+75.00, 29.7' LT.

STA. 10+58.3, SWS LINE 6=
BL. STA. 19+25.00, 28.7' RT.
INSTALL TYPE 1A
CURB INLET (5'X3')
INLET TOP=1279.6
PROVIDE SEDIMENT BARRIER

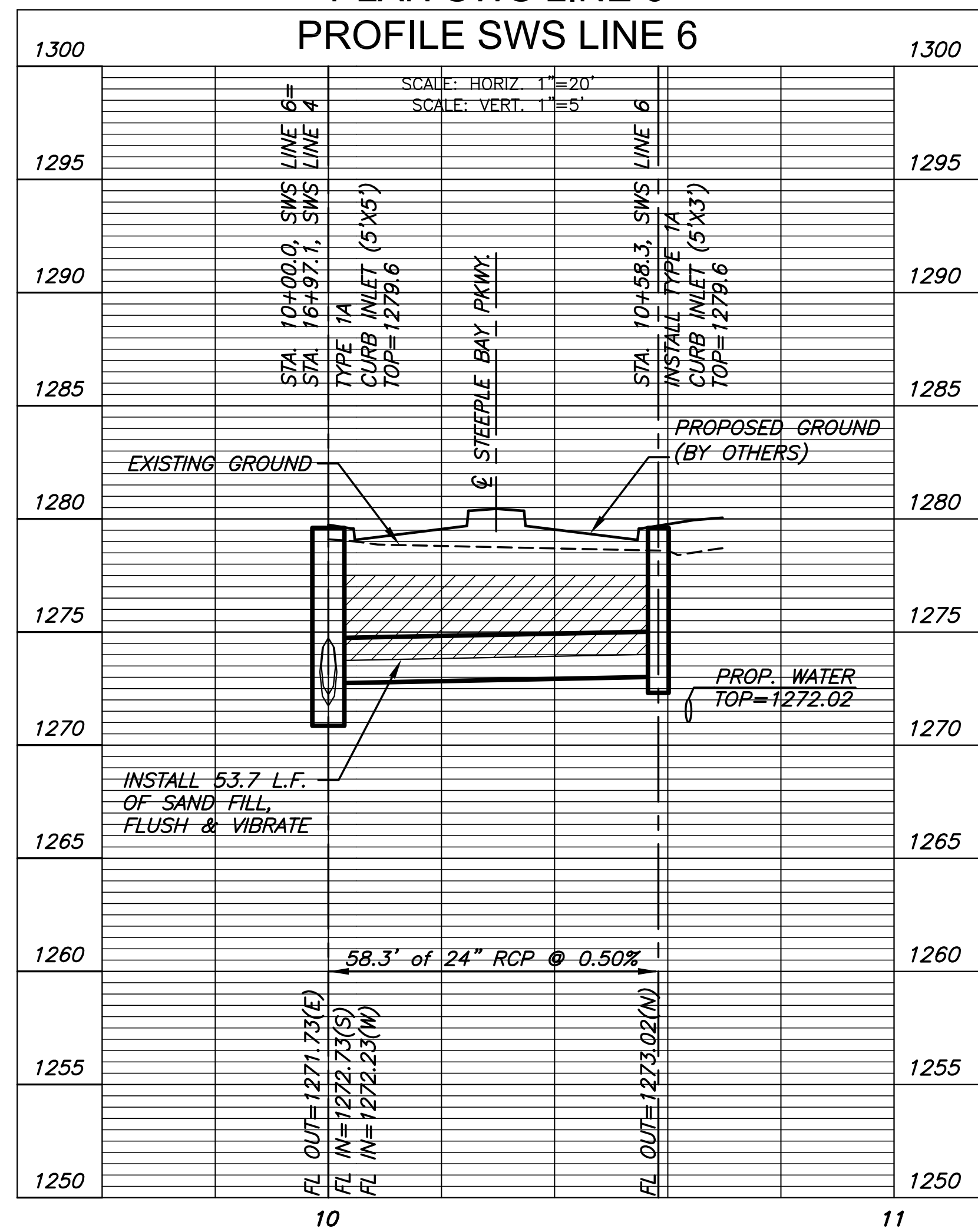
STA. 16+97.1, SWS LINE 4=
STA. 10+00.00, SWS LINE 6=
BL. STA. 19+25.00, 29.7' LT.
INSTALL TYPE 1A
CURB INLET (5'X5')
INLET TOP=1279.6
PROVIDE SEDIMENT BARRIER

NOTE:
CONTRACTOR TO VERIFY THE
DEPTH AND LOCATION OF EXISTING
UTILITIES PRIOR TO CONSTRUCTION.

PLAN SWS LINE 4 (CONT. 1)
PROFILE SWS LINE 4 (CONT. 1)



PLAN SWS LINE 6
PROFILE SWS LINE 6



STORM WATER SEWER PLAN FOR
STEEPLE BAY ADDITION
PART A

©2018
MKEC Engineering
All Rights Reserved
www.mkec.com
These drawings and their contents,
including, but not limited to, all concepts,
designs, & ideas are the exclusive
property of MKEC Engineering (MKEC),
and may not be used or reproduced in any
way without the express consent of MKEC.

SWS LINE 4
CONT. & LINE 6

PROJECT NO.	468-85316	
DATE	JULY 2018	
SCALE	1"=20'	
DESIGNED	DRAWN	CHECKED
SPE	MKB	SPE

NO.	REVISION	DATE

SHEET NO.
12 OF 22