

47TH STREET SOUTH

STAGE STORAGE FOR RETENTION DAM

Elev.	Acres	Ac. Ft.
59.0	0	0
60.0	0.041	0.0205
62.0	0.586	0.0647
64.0	1.692	2.782
66.0	3.168	7.642
68.0	4.740	15.550
Top of Dike 70.0	5.850	26.140

NOTE:

Flood routed 100yr 24hr storm with NRCS Site program 15.3 Ac. Ft. @ Elev. 68.0.

RUNOFF FROM K-MART

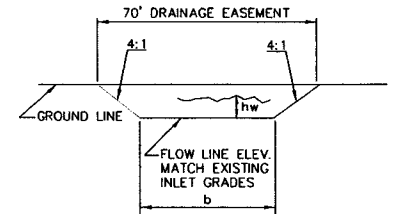
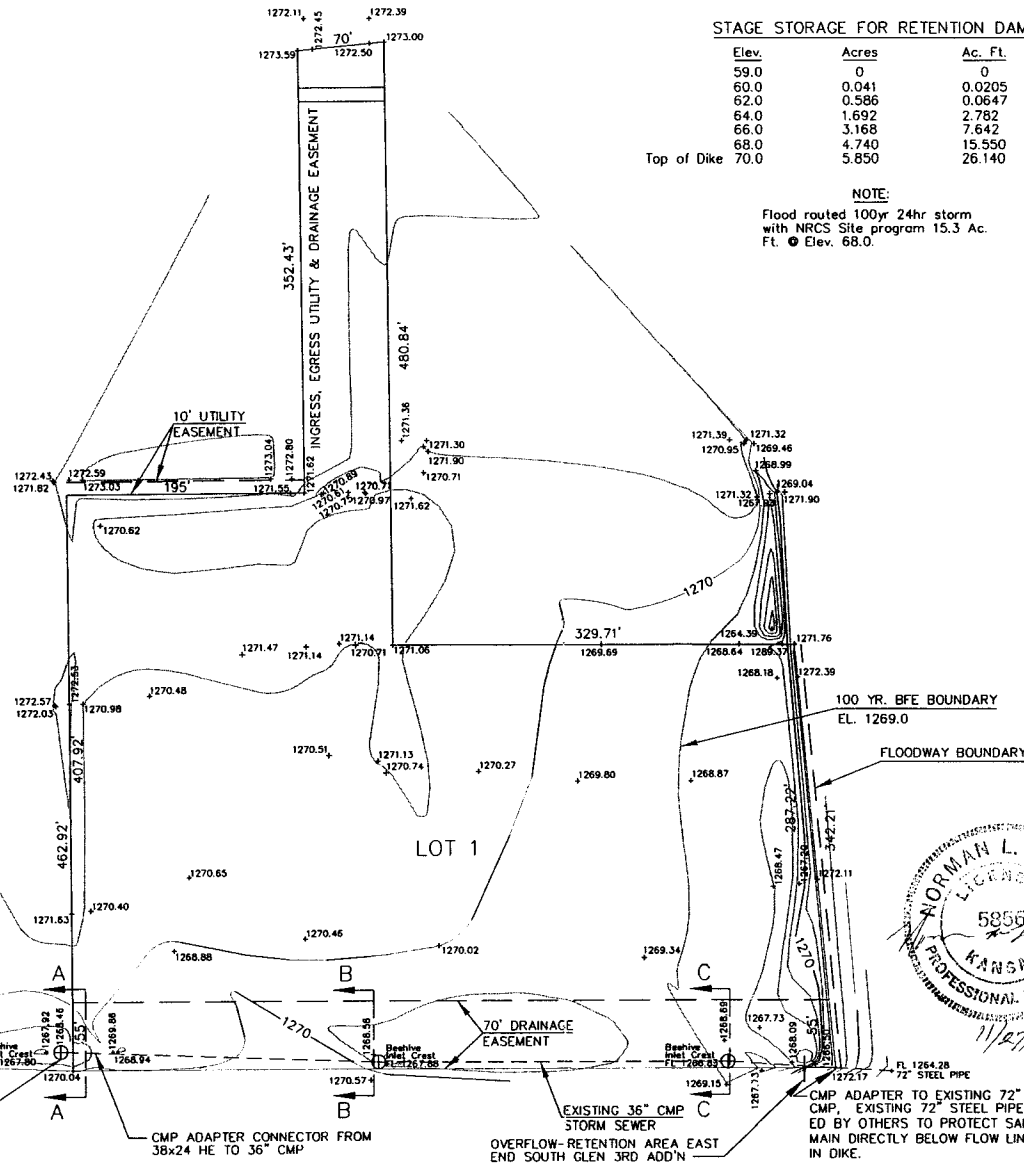
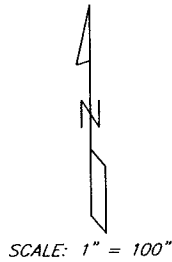
Q5yr = 35 cfs  
 Q100yr 24hr = 59 cfs  
 Q38" x 24" HE STORM SEWER = 34 cfs  
 C = 0.90 (DEVELOPED)

RUNOFF FROM LOT 1

Q5yr = 18 cfs  
 Q100yr 24 hr = 30 cfs  
 Q 36" SPIRAL CMP = 35 cfs  
 C = 0.90 (DEVELOPED)

COMBINED

SEC. A-A Q<sub>5</sub> = 35 + 0 - 34 = 1 cfs  
 SEC. A-A Q<sub>100</sub> = 59 + 0 - 34 = 25 cfs  
 SEC. B-B Q<sub>5</sub> = 35 + 11 - 34 = 12 cfs  
 SEC. B-B Q<sub>100</sub> = 59 + 19 - 34 = 44 cfs  
 SEC. C-C Q<sub>5</sub> = 35 + 18 - 34 = 19 cfs  
 SEC. C-C Q<sub>100</sub> = 59 + 30 - 34 = 55 cfs



TYPICAL SECTION OF DRAINAGE EASEMENT

NOT TO SCALE  
 VEGETATED n = 0.30

	Q	b	hw	s
SEC. A-A	25	50'	0.5'	.001
SEC. B-B	44	64'	0.6'	.001
SEC. C-C	55	64'	0.7'	.001

REVISED: 11/20/06

AS BUILT

DRAINAGE IMPROVEMENTS

47TH STREET SOUTH @ EMPORIA, LOT 1, SOUTH GLEN, 3RD ADDITION, SEDGWICK COUNTY, WICHITA, KANSAS.

NLR & gb Engineering Technology

Design, Survey, Cadd & Construction

10405 Ringer Drive  
 Wichita, Kansas 67209  
 Phone: (316) 722-8517

SCALE:	DATE:	PROJ. NO.:	DES.:	DR.:	CRG.:	APP.:
1" = 100'	APRIL 2006	30095-K3	NLR	GB	NLR	NLR



SURV. INF./JOB | PLOT. CADD | DES. | DR. | GB | TR. | NLR | CRG. | NLR | GB | APP. | NLR | Last Plot-Date: 11/20/06

30095-K3-001.DWG  
 11/20/06  
 PLOT SCALE: 1"=100'