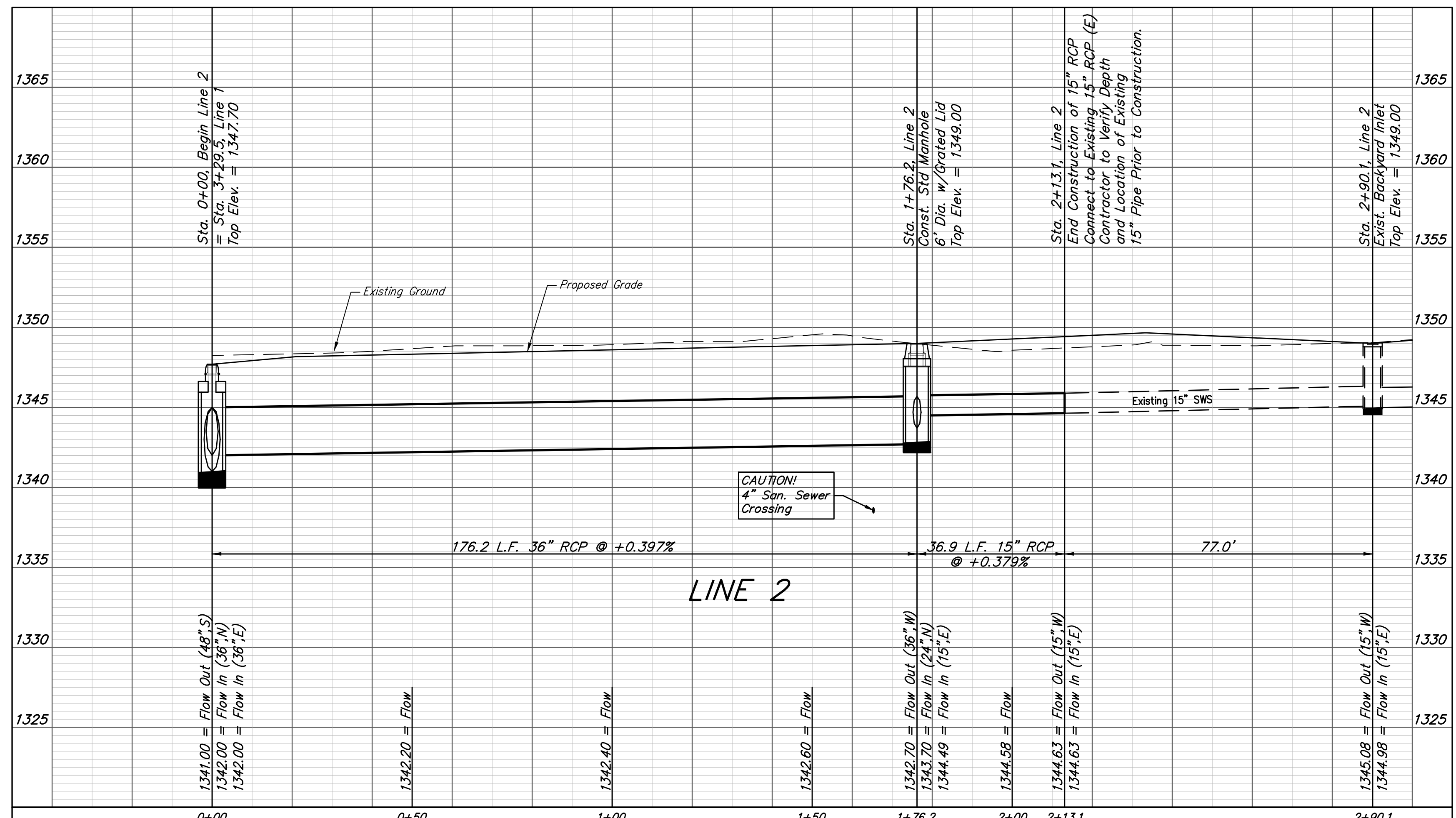
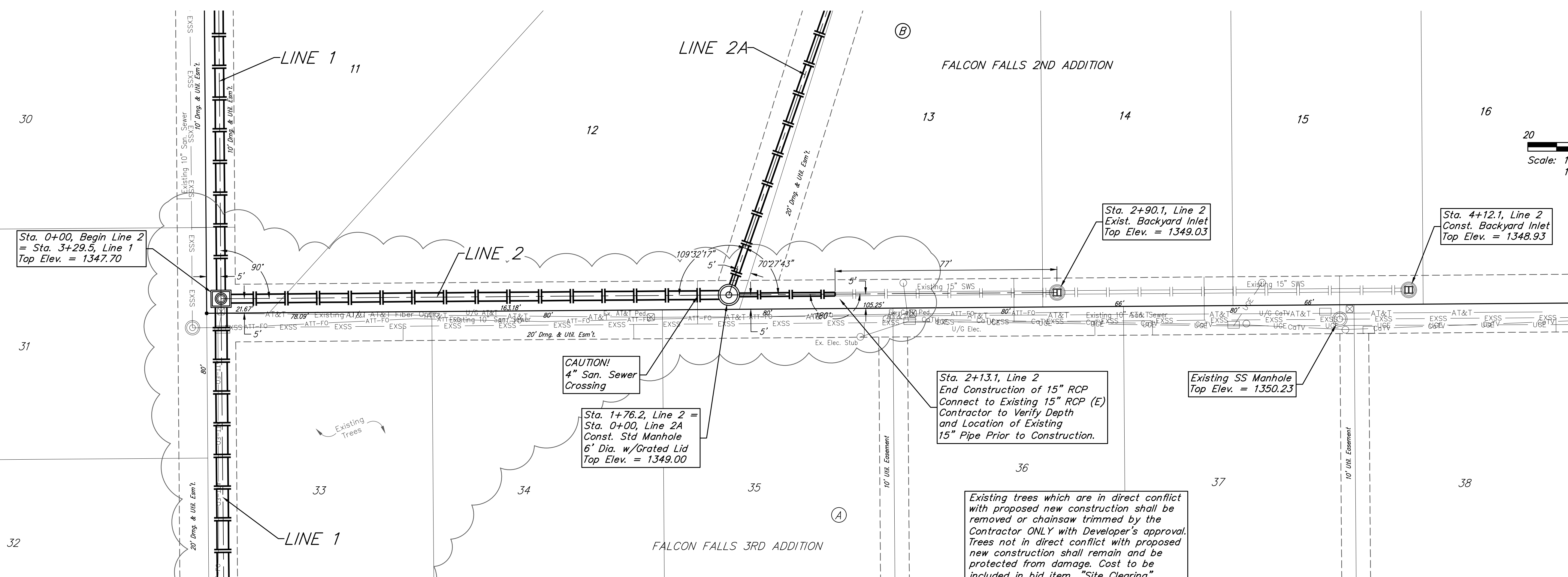
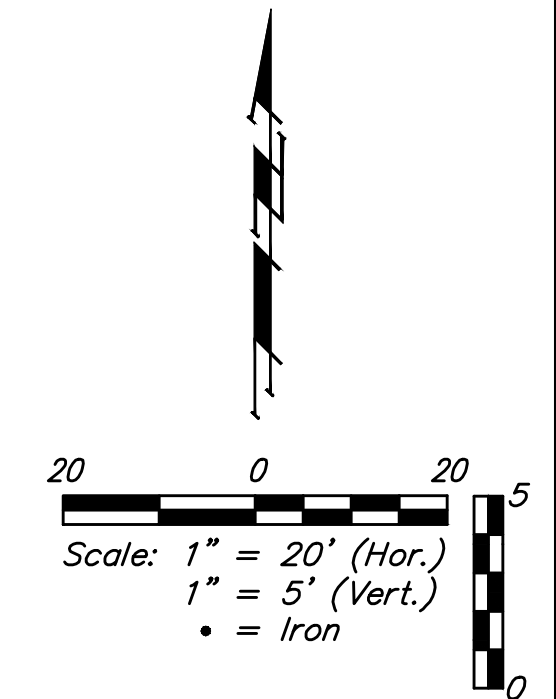


BENCHMARKS:

BM #1: "□" Top of Curb NE of the most easterly corner of Lot 2B, Block E, Falcon Falls 2nd Addition
Elev. = 1361.23 (NGVD29)

BM #2: "□" Top of Curb North of the NE corner of Lot 2, Block D, Falcon Falls 3rd Addition
Elev. = 1351.76 (NGVD29)



Existing storm sewer from Sta. 2+13.1 to Sta. 4+12.1 has been partially silted in to approx. depth of 6"-10". Contractor shall clean storm sewer lines to remove sediment. Cost to be included in bid item "Clean Existing Storm Sewer".

		Falcon Falls 2nd Addition - Phase 4A	
		LINE 2	
		Storm Water Sewer Improvements #731	
<small>Baughman Company, P.A. 315 Ellis St. Wichita, KS 67211 P 316-262-7271 F 316-262-0149 ENGINEERING SURVEYING PLANNING LANDSCAPE ARCHITECTURE</small>			
PROJECT NUMBER 468-85340	DESIGN AEG	DRAWN JAK	
REVISIONS:	APPROVED	DATE 9/04/18	
	SCALE Noted	SHEET	
			7 OF 24