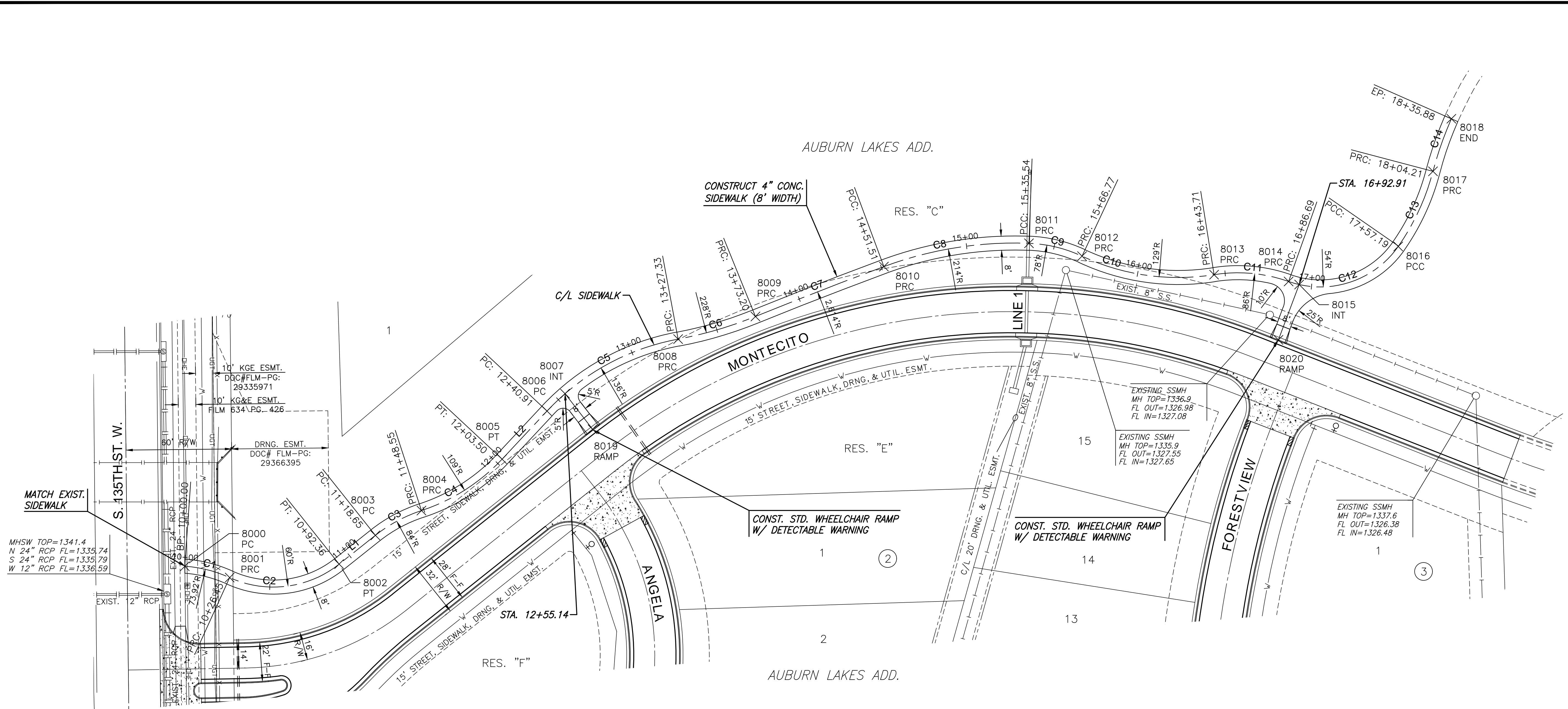


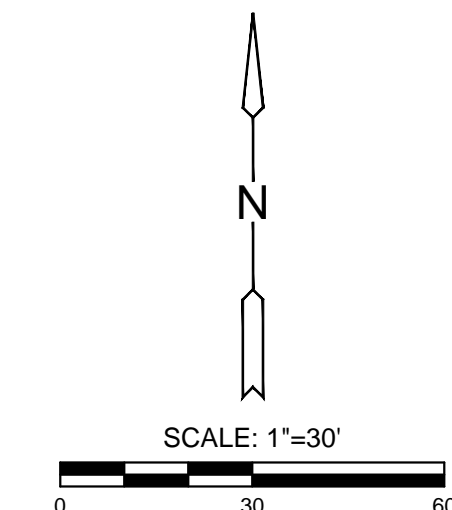
PAVING & INCIDENTAL DRAINAGE FOR
AUBURN LAKES ADDITION
PHASE 1



CENTERLINE TABLE					
NUMBER	LENGTH	RADIUS	DELTA	LINE/CHORD DIRECTION	CHORD LENGTH
C1	26.45'	73.92'	20°29'49"	S75°47'00"E	26.31'
C2	65.91'	60.00'	62°56'26"	N82°59'42"E	62.65'
L1	26.29'			N51°31'29"E	
C3	29.91'	84.00'	20°23'54"	N61°43'26"E	29.75'
C4	54.95'	109.00'	28°53'02"	N57°28'51"E	54.37'
L2	37.41'			N43°02'21"E	
C5	86.42'	136.00'	36°24'24"	N61°14'33"E	84.97'
C6	45.88'	228.00'	11°31'43"	N73°40'53"E	45.80'
C7	78.30'	2614.00'	1°42'59"	N68°46'31"E	78.30'
C8	84.03'	214.00'	22°29'55"	N80°52'58"E	83.49'
C9	31.23'	78.00'	22°56'37"	S76°23'46"E	31.03'
C10	76.94'	129.00'	34°10'20"	S82°00'38"E	75.80'
C11	42.98'	86.00'	28°37'55"	S84°46'50"E	42.53'
C12	70.51'	54.00'	74°48'33"	N72°07'51"E	65.60'
C13	47.02'	135.00'	19°57'16"	N24°44'56"E	46.78'
C14	31.67'	200.00'	9°04'25"	N19°18'31"E	31.64'

SIDEWALK POINTS				
Point #	Northing	Easting	Desc.	
8000	1679296.80	1602382.74	PC	
8001	1679290.34	1602408.24	PRC	
8002	1679297.98	1602470.42	PT	
8003	1679314.33	1602491.00	PC	
8004	1679328.43	1602517.20	PRC	
8005	1679357.65	1602563.05	PT	
8006	1679384.99	1602588.58	PC	
8007	1679394.87	1602598.81	INT	
8008	1679425.87	1602663.07	PRC	
8009	1679438.74	1602707.02	PRC	
8010	1679467.09	1602780.01	PRC	
8011	1679480.32	1602862.45	PRC	
8012	1679473.02	1602892.61	PRC	
8013	1679462.49	1602967.67	PRC	

SIDEWALK POINTS				
Point #	Northing	Easting	Desc.	
8014	1679458.62	1603010.03	PRC	
8015	1679456.88	1603015.99	INT	
8016	1679478.52	1603072.31	PCC	
8017	1679521.21	1603092.05	PRC	
8018	1679551.10	1603102.49	END	
8019	1679374.65	1602614.44	RAMP	
8020	1679425.45	1603004.21	RAMP	



©2018 MKEC Engineering All Rights Reserved www.mkec.com
These drawings and their contents, including, but not limited to, all concepts, designs, & ideas are the exclusive property of MKEC Engineering (MKEC), and may not be used or reproduced in any way without the express consent of MKEC.

SIDEWALK PLAN

PROJECT NO.	472-85327	
DATE	SEPT. 2018	
SCALE	1"=30'	
DESIGNED	DRAWN	CHECKED
DFL	JWC	GJA
NO.	REVISION	DATE

J:\PROJECTS\2018\1601010221 - PERFECTION_AUBURN_LAKES - 16221 CAD\SHOTS\05 CIVIL\PAV\16221-05-6208.DWG
 PLOTTED: Thursday, September 06, 2018 @ 09:13AM