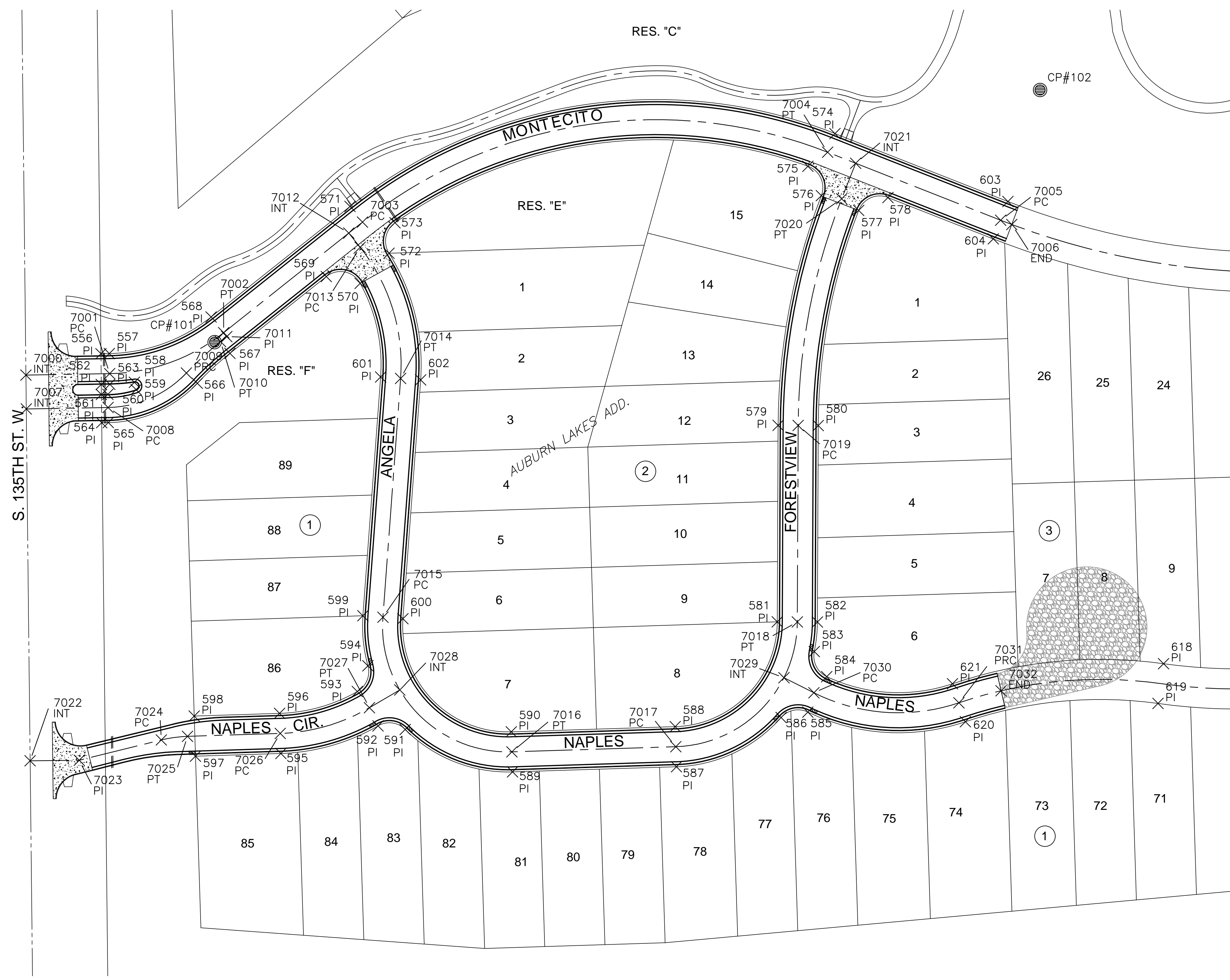


PLOTTED: Thursday, September 06, 2018 @ 09:15AM

J:\PROJECTS\2018\1601010221 - PERFECTION_AUBURN LAKES - 16221 CAD\SH1505 CIVIL\PAV\16221-05-6509.DWG



PAVING & INCIDENTAL DRAINAGE FOR
AUBURN LAKES ADDITION
 PHASE 1



CONTROL POINTS

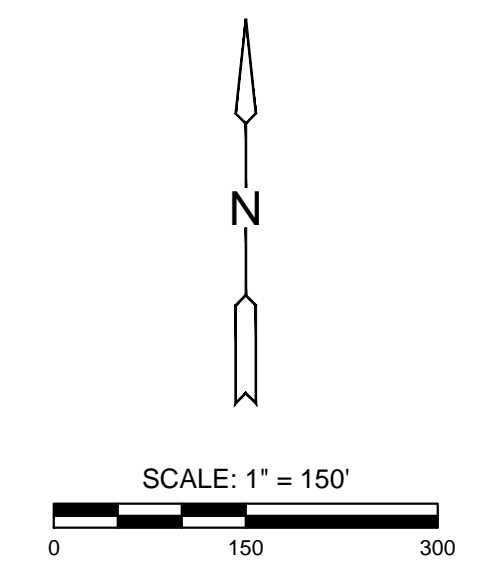
CP #50	N=1678624.564	E=1602578.219	ELEV=1351.95
CP #51	N=1679841.802	E=1602871.517	ELEV=1341.11
CP #52	N=1679845.035	E=1604250.573	ELEV=1325.59
CP #53	N=1679250.123	E=1603773.777	ELEV=1334.71
CP #54	N=1678264.682	E=1604718.113	ELEV=1318.68
CP #100	N=1678734.346	E=1603473.779	ELEV=1331.10
CP #101	N=1679264.078	E=1602501.052	ELEV=1339.45
CP #102	N=1679465.148	E=1603152.200	ELEV=1341.04
CP #103	N=1679840.258	E=1603425.756	ELEV=1337.52
CP #104	N=1679763.186	E=1603796.746	ELEV=1336.52
CP #105	N=1678869.689	E=1604179.776	ELEV=1324.95
CP #106	N=1679180.316	E=1604193.435	ELEV=1332.59
CP #107	N=1678794.958	E=1604458.201	ELEV=1326.57

Horizontal and Vertical Datum:
 Horizontal Datum: Kansas Coordinate System 1983 South Zone. Horizontal coordinates modified to ground using a scale factor of 1.000120014
 Vertical Datum: NAVD 88

CP#53

CP#50

CP#100



EVERY ATTEMPT HAS BEEN MADE TO INSURE ALL COORDINATE VALUES SHOWN ARE AN ACCURATE AND TRUE REPRESENTATION OF THE CURRENT PLANS. ALL VALUES ARE TO BE CONFIRMED WITH THE FINAL SIGNED PLAN SET BEFORE USE.

©2018 MKEC Engineering All Rights Reserved www.mkec.com
 These drawings and their contents, including, but not limited to, all concepts, designs, & ideas are the exclusive property of MKEC Engineering (MKEC), and may not be used or reproduced in any way without the express consent of MKEC.

BUBBLE MAP

PROJECT NO.	472-85327	
DATE	SEPT. 2018	
SCALE	1"=50'	
DESIGNED	DRAWN	CHECKED
DFL	JWC	GJA
NO.	REVISION	DATE