

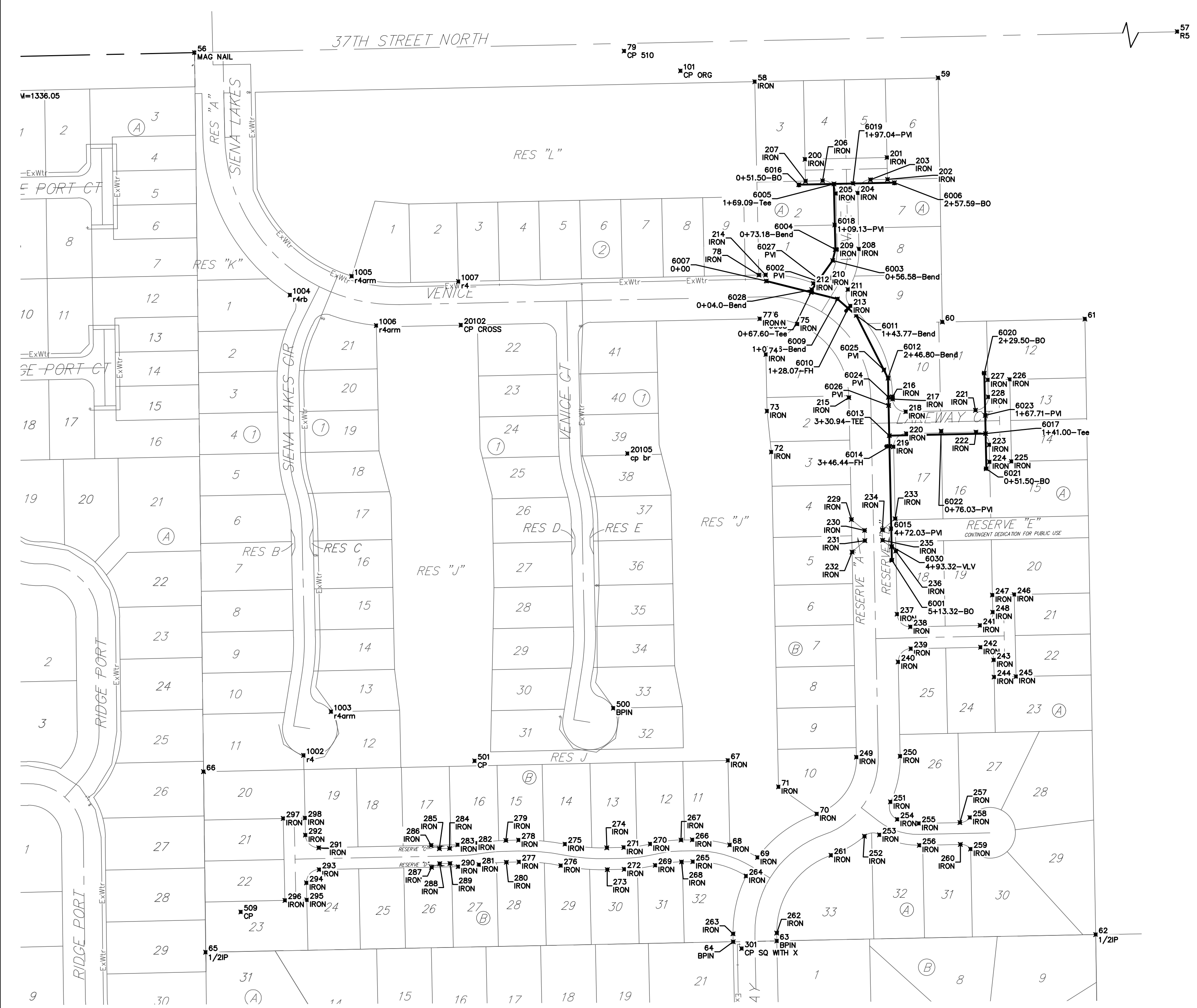
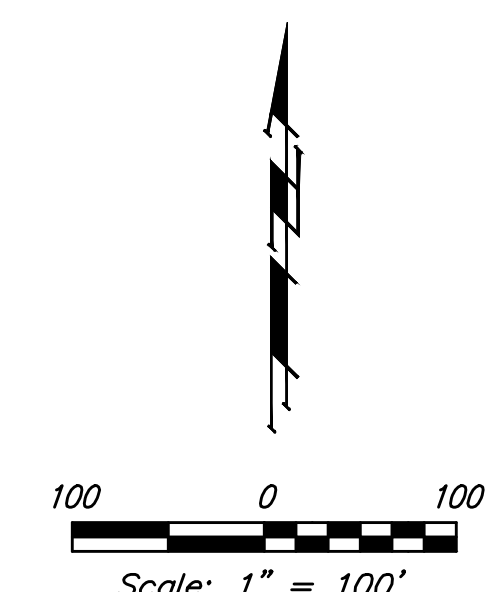
BENCHMARKS:
 Chiseled square at the end of the top of curb at the southeast corner of Ridge Port and 37th ST N.
 Elev. = 1333.05 NAVD88

Chiseled square on the south side of curb inlet on the east side of Lakeway ST
 Elev. = 1329.58 NAVD88

WTR POINTS			
Point #	Northing	Easting	Description
6001	1,708,690.21	1,626,411.27	5+13.32-BO
6002	1,708,098.55	1,626,302.92	PVI
6003	1,708,128.78	1,626,324.65	0+56.58-Bend
6004	1,708,144.95	1,626,328.45	0+73.18-Bend
6005	1,708,240.84	1,626,326.41	1+69.09-Tee
6006	1,708,242.71	1,626,414.89	2+57.59-BO
6007	1,708,098.78	1,626,227.52	0+00
6008	1,708,082.19	1,626,293.05	0+67.60-Tee
6009	1,708,072.46	1,626,331.50	1+07.26-Bend
6010	1,708,058.89	1,626,347.27	1+28.07-FH
6011	1,708,048.65	1,626,359.18	1+43.77-Bend
6012	1,708,956.68	1,626,405.62	2+46.80-Bend
6013	1,708,872.55	1,626,407.41	3+30.94-TEE
6014	1,708,857.06	1,626,407.73	3+46.44-FH
6015	1,708,736.50	1,626,410.29	4+72.03-PVI
6016	1,708,239.74	1,626,274.92	0+51.50-BO
6017	1,708,875.54	1,626,548.37	1+41.00-Tee
6018	1,708,180.88	1,626,327.68	1+09.13-PVI
6019	1,708,241.43	1,626,354.35	1+97.04-PVI
6020	1,708,964.02	1,626,546.50	2+29.50-BO
6021	1,708,824.05	1,626,549.47	0+51.50-BO
6022	1,708,879.16	1,626,483.31	0+76.03-PVI
6023	1,708,902.25	1,626,547.81	1+67.71-PVI
6024	1,708,928.71	1,626,406.21	PVI
6025	1,708,968.69	1,626,399.55	PVI
6026	1,708,916.71	1,626,406.47	PVI
6027	1,708,100.99	1,626,304.68	PVI
6028	1,708,086.09	1,626,293.97	0+04.0-Bend

CONTROLS			
Point #	Northing	Easting	Description
56	1,708,432.97	1,625,390.63	MAG NAIL
57	1,708,488.31	1,627,982.48	RS
58	1,708,390.46	1,626,210.60	IRON
59	1,708,396.14	1,626,478.94	
60	1,708,038.86	1,626,485.13	
61	1,708,043.23	1,626,693.72	
62	1,708,142.50	1,626,709.57	1/2IP
63	1,708,133.19	1,626,242.96	BPIN
64	1,708,131.97	1,626,178.94	BPIN
65	1,708,116.72	1,625,406.99	1/2IP
66	1,708,380.91	1,625,403.85	
67	1,708,397.32	1,626,171.38	IRON
68	1,708,273.70	1,626,174.02	IRON
69	1,708,255.43	1,626,214.61	IRON
70	1,708,318.97	1,626,301.41	IRON
71	1,708,358.68	1,626,245.30	IRON
72	1,708,848.57	1,626,234.84	IRON
73	1,708,908.45	1,626,228.56	IRON
74	1,708,991.35	1,626,226.79	IRON
75	1,708,035.75	1,626,272.96	IRON
76	1,708,043.75	1,626,227.67	IRON
77	1,708,043.54	1,626,218.01	IRON
78	1,708,107.53	1,626,216.65	IRON
79	1,708,435.27	1,626,019.52	CP 510
101	1,708,406.33	1,626,102.00	CP ORG
102	1,708,034.28	1,625,780.64	CP CROSS
200	1,708,276.95	1,626,284.14	IRON
201	1,708,279.49	1,626,404.11	IRON
202	1,708,247.50	1,626,404.79	IRON
203	1,708,246.97	1,626,379.79	IRON
204	1,708,227.57	1,626,361.20	IRON
205	1,708,226.89	1,626,329.21	IRON
206	1,708,245.48	1,626,309.81	IRON
207	1,708,244.95	1,626,284.82	IRON
208	1,708,145.64	1,626,362.94	IRON
209	1,708,144.96	1,626,330.95	IRON
210	1,708,103.06	1,626,319.65	IRON
211	1,708,086.39	1,626,346.97	IRON
212	1,708,095.26	1,626,296.51	IRON
213	1,708,062.25	1,626,350.62	IRON
214	1,708,107.73	1,626,226.30	IRON
215	1,708,928.23	1,626,348.21	IRON
216	1,708,929.59	1,626,412.20	IRON
217	1,708,926.17	1,626,412.27	IRON
218	1,708,907.58	1,626,431.67	IRON
219	1,708,856.18	1,626,413.75	IRON
220	1,708,875.58	1,626,432.35	IRON
221	1,708,909.74	1,626,533.65	IRON
222	1,708,877.75	1,626,534.32	IRON
223	1,708,859.15	1,626,553.72	IRON
224	1,708,834.16	1,626,554.25	IRON
225	1,708,834.84	1,626,586.25	IRON
226	1,708,954.81	1,626,583.70	IRON
227	1,708,954.13	1,626,551.71	IRON
228	1,708,929.14	1,626,552.24	IRON
229	1,708,749.73	1,626,352.00	IRON
230	1,708,733.89	1,626,371.34	IRON
231	1,708,718.89	1,626,371.66	IRON
232	1,708,702.24	1,626,353.01	IRON
233	1,708,751.09	1,626,415.98	IRON
234	1,708,734.44	1,626,397.33	IRON
235	1,708,719.44	1,626,397.65	IRON
236	1,708,703.60	1,626,416.99	IRON
237	1,708,611.36	1,626,418.95	IRON
238	1,708,592.77	1,626,438.35	IRON
239	1,708,560.77	1,626,439.03	IRON
240	1,708,541.37	1,626,420.43	IRON
241	1,708,594.93	1,626,540.32	IRON
242	1,708,562.94	1,626,541.00	IRON
243	1,708,544.34	1,626,560.40	IRON
244	1,708,519.35	1,626,560.93	IRON
245	1,708,520.03	1,626,592.92	IRON
246	1,708,640.00	1,626,590.38	IRON
247	1,708,639.32	1,626,558.39	IRON

CONTROLS			
Point #	Northing	Easting	Description
248	1,708,614.33	1,626,558.92	IRON
249	1,708,402.10	1,626,359.37	IRON
250	1,708,403.46	1,626,423.36	IRON
251	1,708,336.68	1,626,409.24	IRON
252	1,708,286.44	1,626,371.07	IRON
253	1,708,288.40	1,626,393.09	IRON
254	1,708,311.06	1,626,419.20	IRON
255	1,708,305.15	1,626,450.75	IRON
256	1,708,273.16	1,626,451.43	IRON
257	1,708,306.43	1,626,510.80	IRON
258	1,708,313.87	1,626,525.48	IRON
259	1,708,267.63	1,626,526.46	IRON
260	1,708,274.44	1,626,511.48	IRON
261	1,708,258.46	1,626,322.27	IRON
262	1,708,144.74	1,626,242.73	IRON
263	1,708,143.57	1,626,178.74	IRON
264	1,708,228.16	1,626,197.86	IRON
265	1,708,249.19	1,626,119.99	IRON
266	1,708,281.18	1,626,119.24	IRON
267	1,708,280.79	1,626,102.60	IRON
268	1,708,248.80	1,626,103.34	IRON
269	1,708,243.85	1,626,065.02	IRON
270	1,708,274.97	1,626,057.61	IRON
271	1,708,270.01	1,626,018.88	IRON
272	1,708,238.02	1,626,019.56	IRON
273	1,708,237.49	1,625,994.68	IRON
274	1,708,269.48	1,625,994.00	IRON
275	1,708,274.81	1,625,932.89	IRON
276	1,708,243.42	1,625,926.68	IRON
277	1,708,248.75	1,625,865.57	IRON
278	1,708,280.74	1,625,864.89	IRON
279	1,708,280.35	1,625,846.30	IRON
280	1,708,248.36	1,625,846.98	IRON
281	1,708,244.67	1,625,806.98	IRON
282	1,708,276.24	1,625,801.80	IRON
283	1,708,273.85	1,625,775.88	IRON
284	1,708,268.60	1,625,763.99	IRON
285	1,708,268.28	1,625,749.00	IRON
286	1,708,273.03	1,625,736.89	IRON
287	1,708,241.03	1,625,737.57	IRON
288	1,708,246.29	1,625,749.46	IRON
289	1,708,246.60	1,625,764.46	IRON
290	1,708,241.86	1,625,776.56	IRON
291	1,708,269.54	1,625,572.39	IRON
292	1,708,288.13	1,625,553.00	IRON
293	1,708,237.54	1,625,573.07	IRON
294	1,708,218.14	1,625,554.48	IRON
295	1,708,193.15	1,625,553.01	IRON
296	1,708,192.47	1,625,523.02	IRON
297	1,708,312.44	1,625,520.47	IRON
298	1,708,313.12	1,625,552.46	IRON
301	1,708,122.02	1,626,191.52	CP SQ WITH X
500	1,708,473.86	1,626,003.64	BPIN
501	1,708,396.67	1,625,800.62	CP
509	1,708,175.57	1,625,458.41	CP
1002	1,708,404.76	1,625,550.36	r4
1003	1,708,468.64	1,625,590.55	r4arm
1004	1,708,078.26	1,625,530.46	r4rb
1005	1,708,105.84	1,625,620.73	r4arm
1006	1,708,033.64	1,625,656.70	r4arm
1007	1,708,098.12	1,625,776.90	r4
10475	1,708,375.89	1,625,091.07	PLAT BM=1336.05
20102	1,708,034.28	1,625,780.64	CP CROSS
20105	1,708,846.41	1,626,024.39	cp br



Baughman Siena Lakes 2nd Addition - Phase I
COORDINATES
 Water Distribution System

Baughman Company, P.A. 315 Ellis St. Wichita, KS 67211 P 316-262-7271 F 316-262-0149
 ENGINEERING | SURVEYING | PLANNING | LANDSCAPE ARCHITECTURE

PROJECT NUMBER 448-90638	DESIGN AEG
REVISIONS:	DRAWN JAK
	DATE 9/11/18
	SCALE Noted
	SHEET 13 OF 14

C:\Projects\Siena Lakes\Engineering\Phase 1\WTR_1804E992\WTR PLANS.dwg