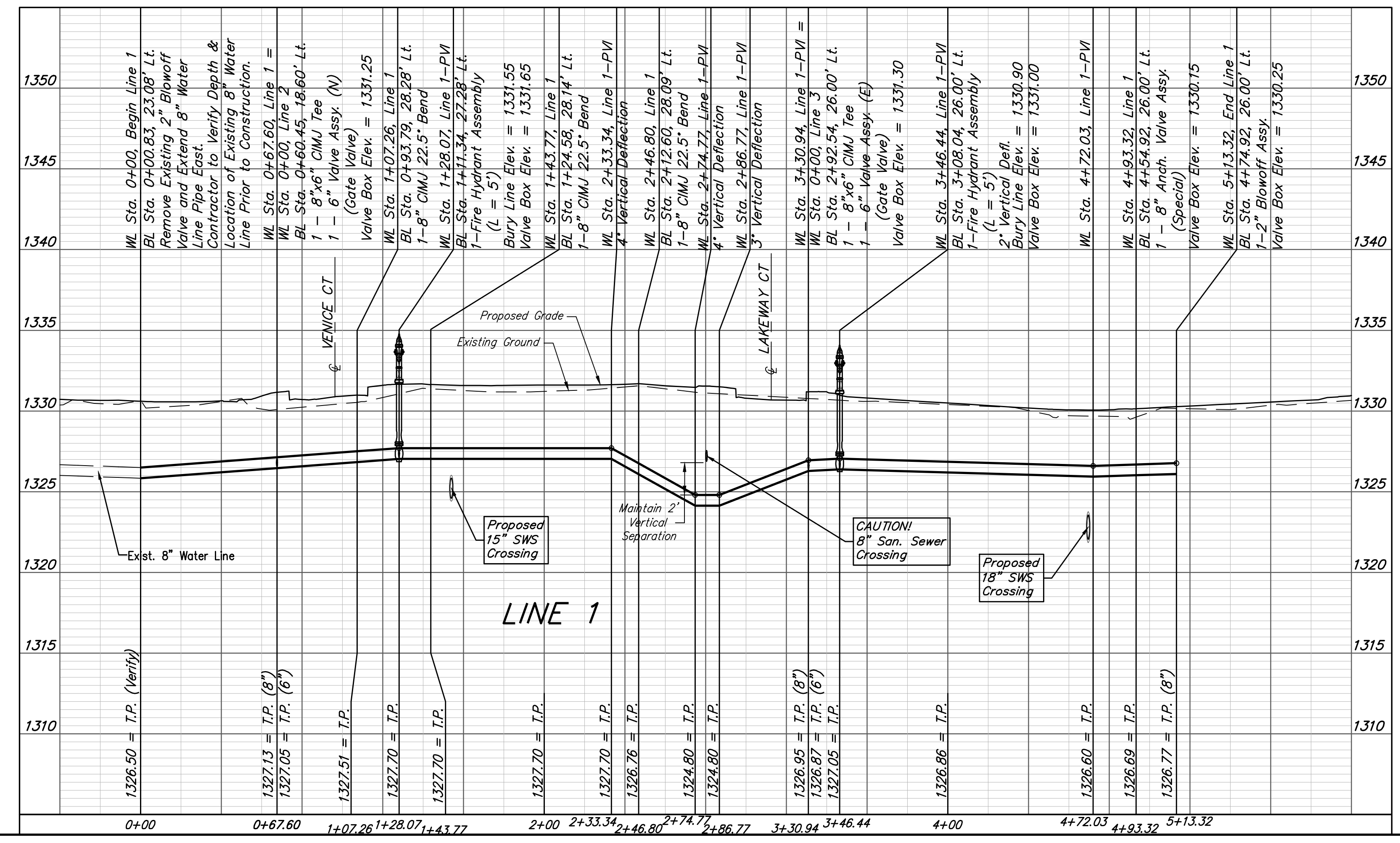
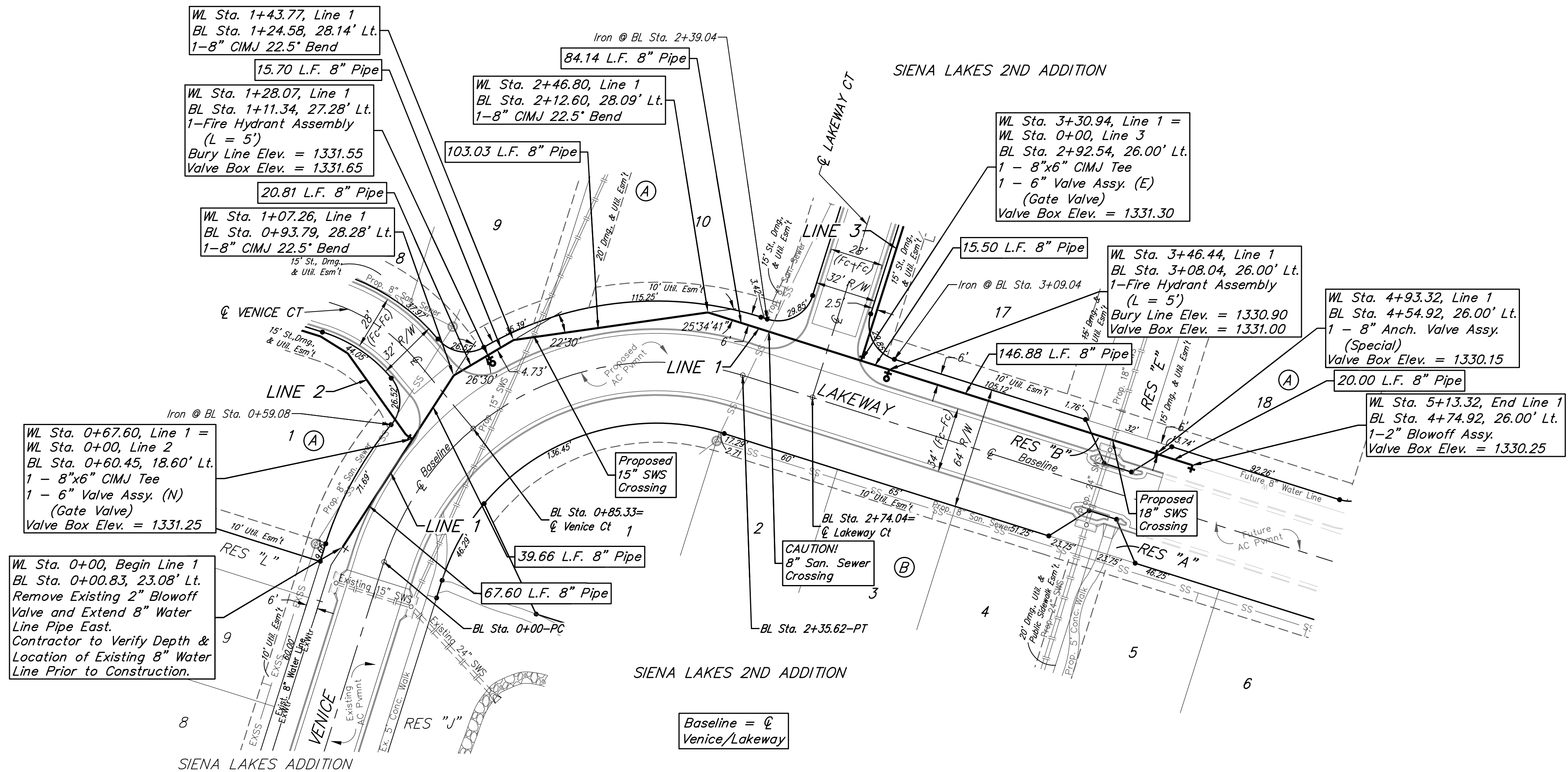
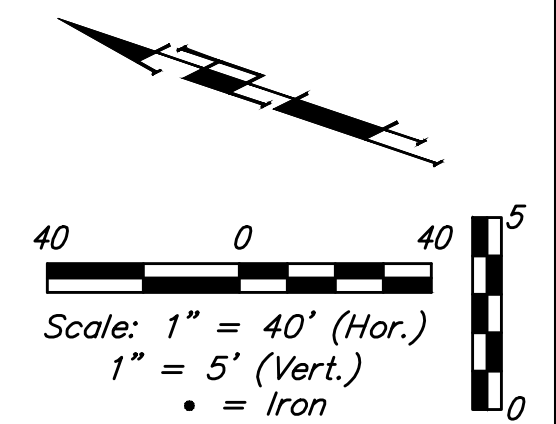


BENCHMARKS:
 Chiseled square at the end of the top of curb at the southeast corner of Ridge Port and 37th ST N.
 Elev. = 1333.05 NAVD88

Chiseled square on the south side of curb inlet on the east side of Lakeway ST.
 Elev. = 1329.58 NAVD88



Siena Lakes 2nd Addition - Phase I

LINE 1
Water Distribution System

Baughman Company, P.A. 315 Ellis St. Wichita, KS 67211 P 316-262-7271 F 316-262-0149
ENGINEERING | SURVEYING | PLANNING | LANDSCAPE ARCHITECTURE

PROJECT NUMBER 448-90638	DESIGN AEG
REVISIONS:	DRAWN JAK
	DATE 9/11/18
	SCALE Noted
	SHEET 4 OF 14

C:\Projects\Siena Lakes\Engineering\Phase 3\WTR_1804E992\WTR PLANS.dwg