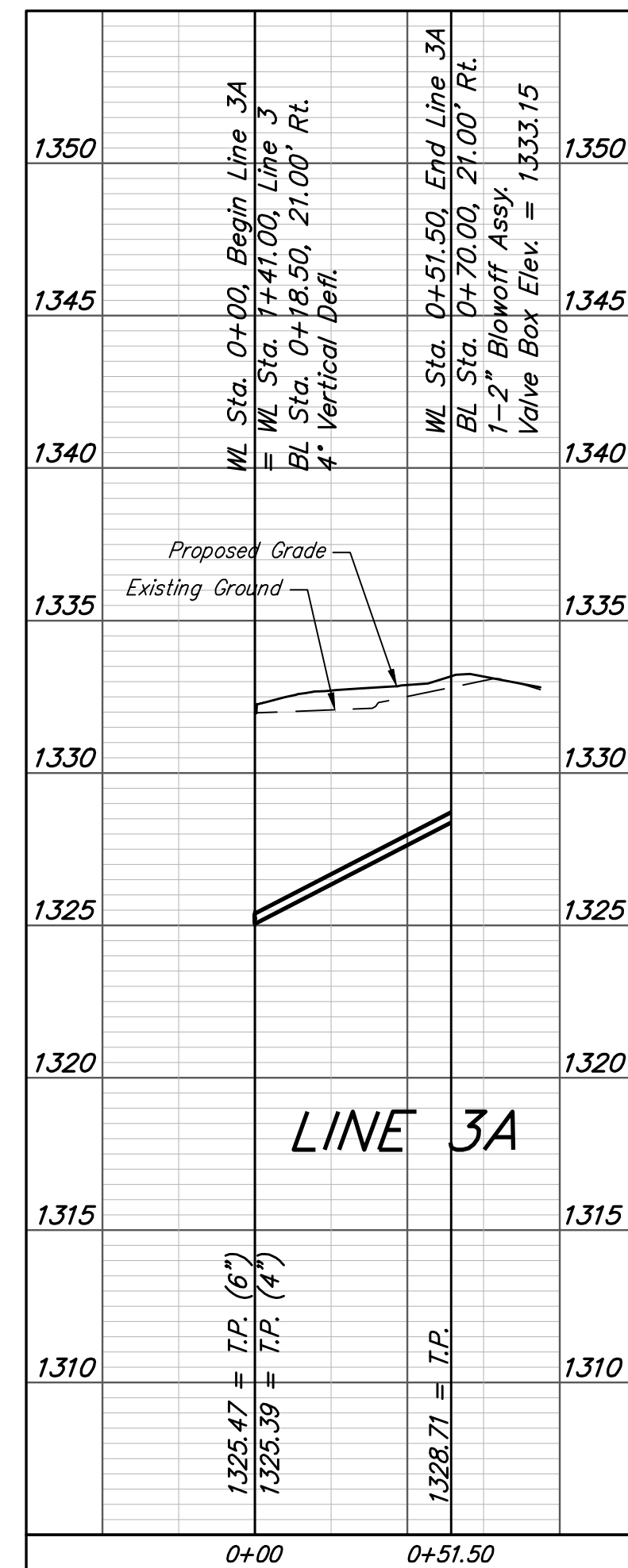
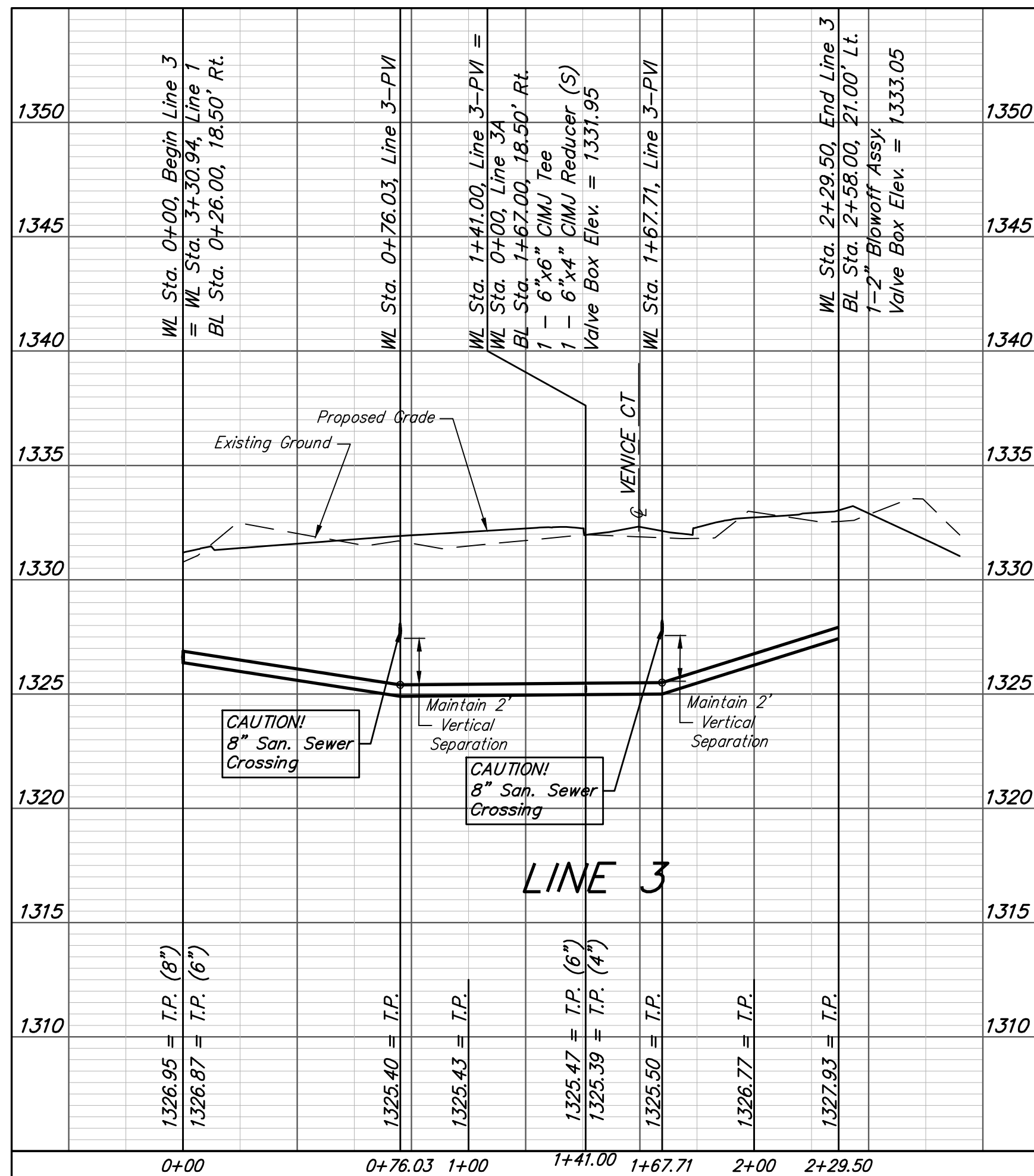
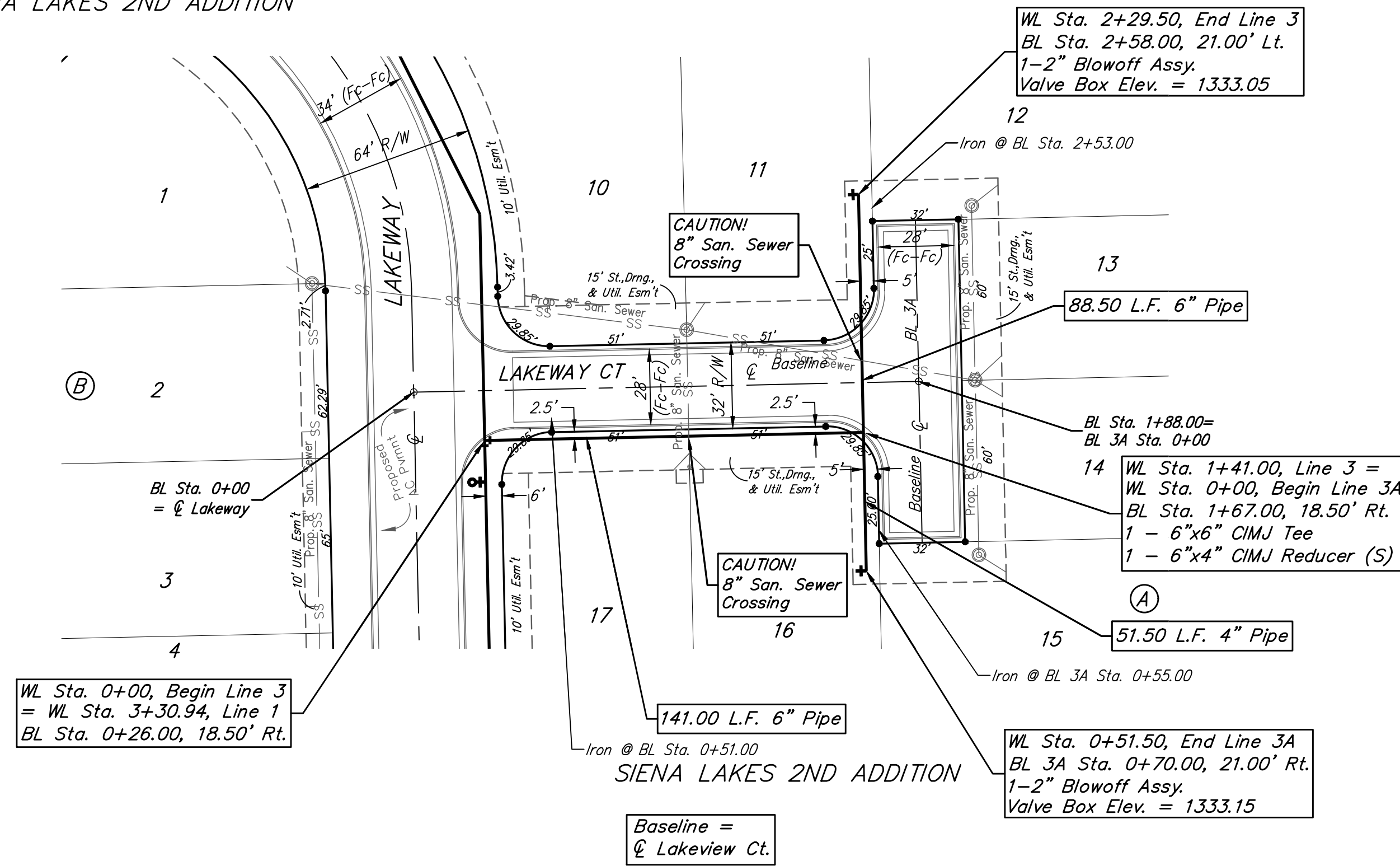


**BENCHMARKS:**  
 Chiseled square at the end of the top of curb at the southeast corner of Ridge Port and 37th ST N.  
 Elev. = 1333.05 NAVD88

Chiseled square on the south side of curb inlet on the east side of Lakeway ST  
 Elev. = 1329.58 NAVD88

SIENA LAKES 2ND ADDITION



**Baughman** Siena Lakes 2nd Addition - Phase I  
**LINE 3 & LINE 3A**  
 Water Distribution System

Baughman Company, P.A. 315 Ellis St. Wichita, KS 67211 P 316-262-7271 F 316-262-0149  
 ENGINEERING | SURVEYING | PLANNING | LANDSCAPE ARCHITECTURE

|                             |                |                         |
|-----------------------------|----------------|-------------------------|
| PROJECT NUMBER<br>448-90638 | DESIGN<br>AEG  | DRAWN<br>JAK            |
| REVISIONS:                  | APPROVED       | DATE<br>9/11/18         |
|                             | SCALE<br>Noted | SHEET<br><b>6 OF 14</b> |