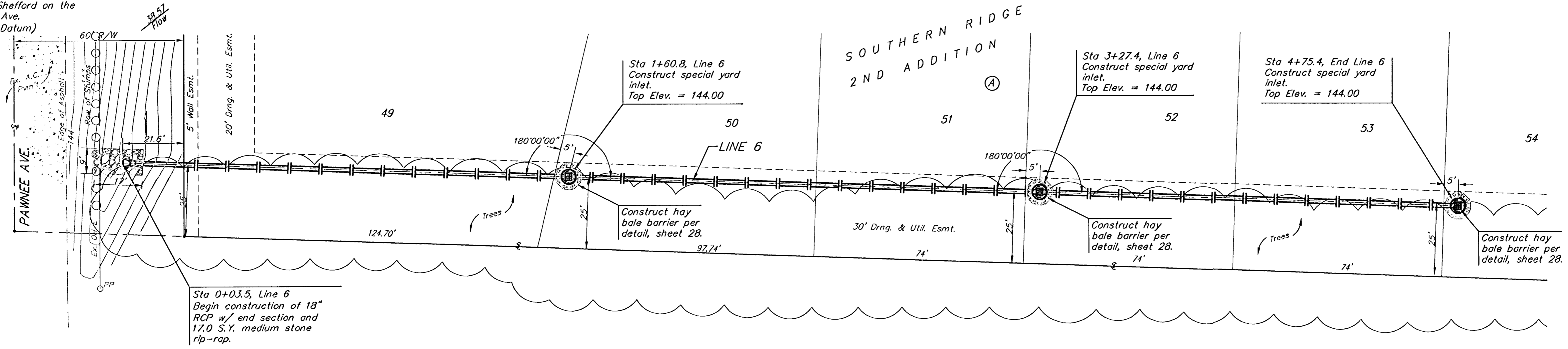


BENCHMARKS:
 BM #1: COW Disc at South West Corner of the Intersection of Lark & Atlanta. Elev. = 145.20 (City Datum)

BM #2: COW Disc at North West side of Westgate at South End of Lot 13 Block "B" Southern Ridge Addition. Elev. = 144.10 (City Datum)

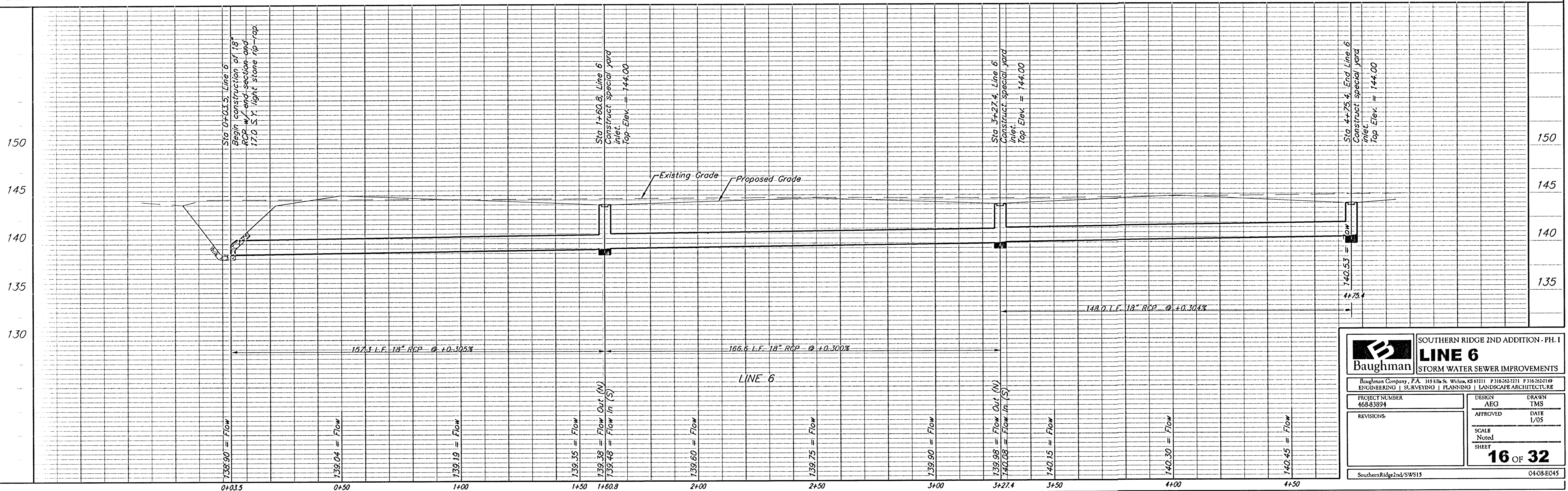
BM #3: COW BM at Shefford on the south side of Pawnee Ave. Elev. = 145.53 (City Datum)

Scale: 1" = 20' Horizontal
 1" = 5' Vertical
 • = Iron



Remove trees ONLY if approved by Engineer as necessary for storm sewer construction. Cost of removal to be incidental to lump sum bid item "Site Clearing & Restoration".

Medium Stone Rip-Rap shall consist of an even mix of Light Stone Rip-Rap and Heavy Stone Rip-Rap Gradations. (to be bid as Heavy Stone Rip-Rap)



Baughman		SOUTHERN RIDGE 2ND ADDITION - PH. I	
LINE 6		STORM WATER SEWER IMPROVEMENTS	
Baughman Company, P.A. 315 Ellis St. Winston, NC 27111 P. 315.252.7271 F. 315.252.6199			
PROJECT NUMBER 468-83894		DESIGN AEG	DRAWN TMS
REVISIONS:		APPROVED	DATE 1/05
		SCALE Noted	SHEET 16 OF 32
SouthernRidge2ndSWS15		04-08-E045	