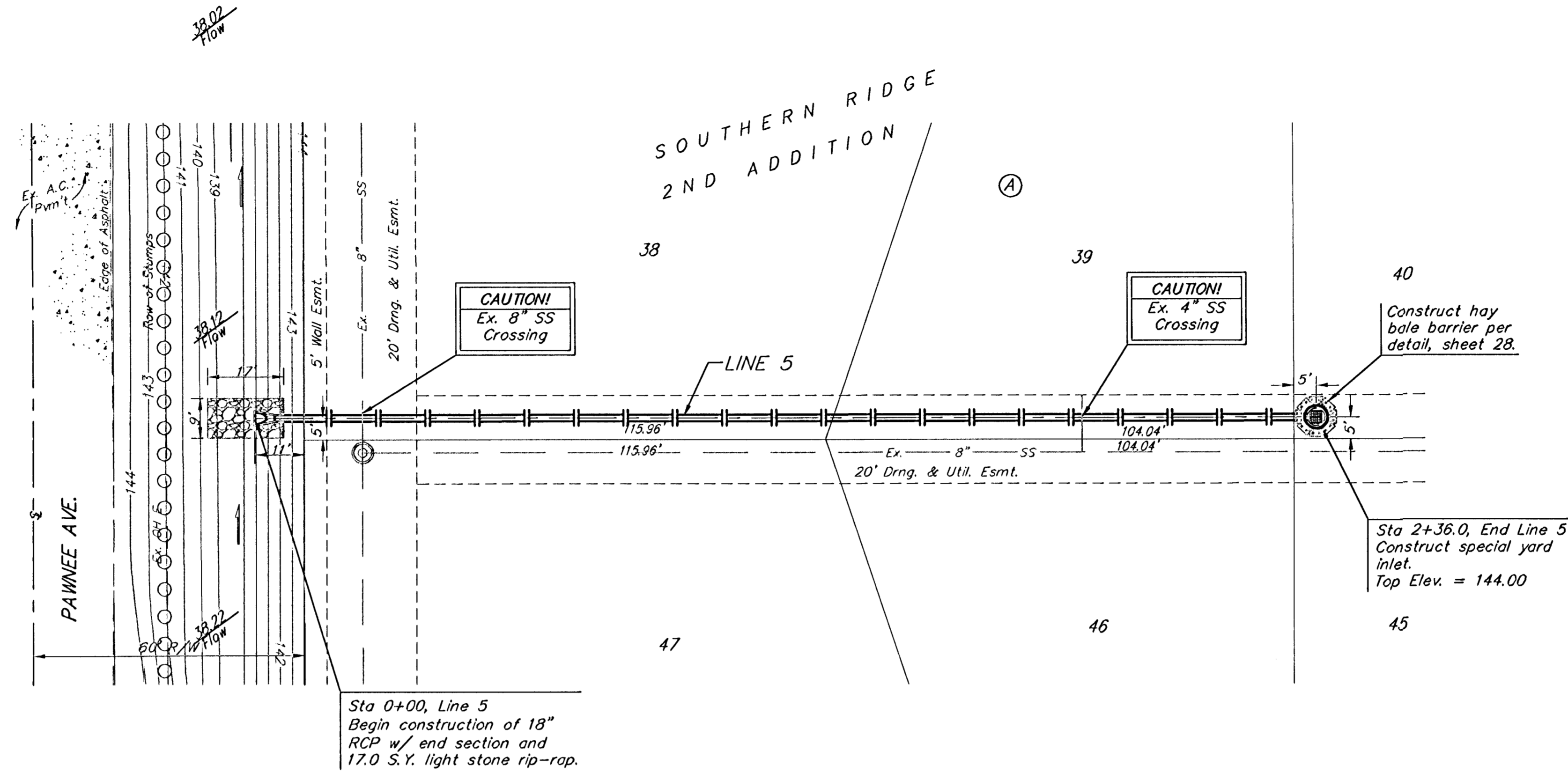


**BENCHMARKS:**  
 BM #1: COW Disc at South West Corner of the Intersection of Lark & Atlanta.  
 Elev. = 145.20 (City Datum)

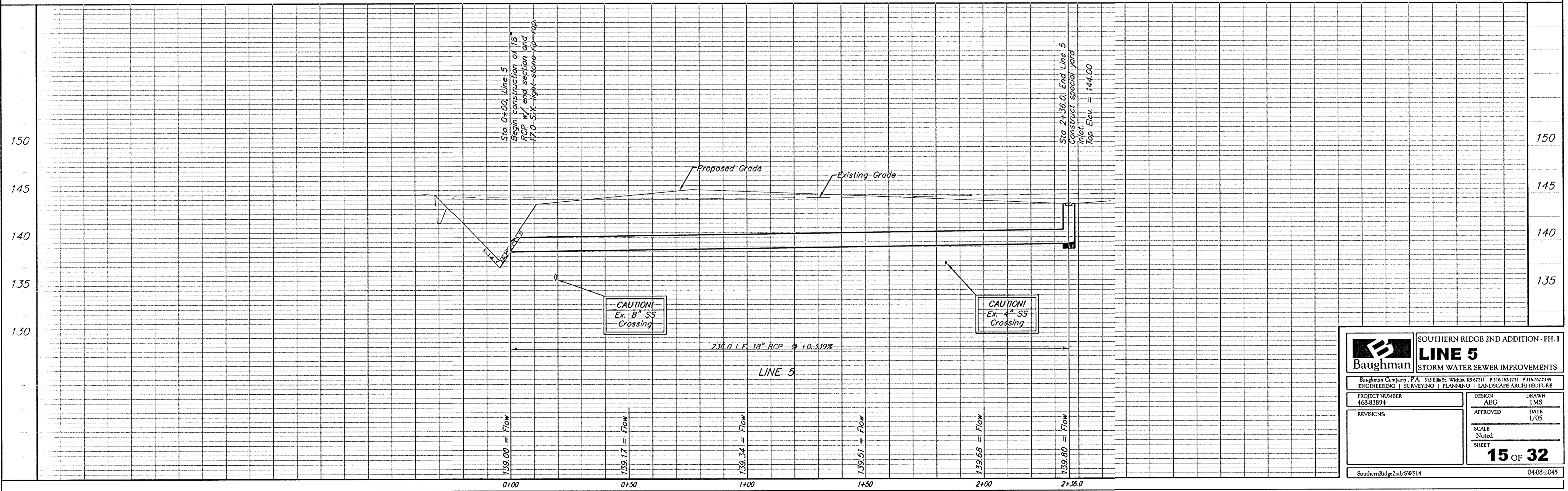
BM #2: COW Disc at North West side of Westgate at South End of Lot 13 Block "B" Southern Ridge Addition.  
 Elev. = 144.10 (City Datum)

BM #3: COW BM at Shefford on the south side of Pawnee Ave.  
 Elev. = 145.53 (City Datum)

Scale: 1" = 20' Horizontal  
 1" = 5' Vertical  
 • = Iron



Remove trees ONLY if approved by Engineer as necessary for storm sewer construction. Cost of removal to be incidental to lump sum bid item "Site Clearing & Restoration".



<b>Baughman</b>		SOUTHERN RIDGE 2ND ADDITION - PH. I	
		<b>LINE 5</b>	
		STORM WATER SEWER IMPROVEMENTS	
Baughman Company, P.A. 315 E. 11th St. Wichita, KS 67211 P 316-262-7271 F 316-262-0149			
ENGINEERING   SURVEYING   PLANNING   LANDSCAPE ARCHITECTURE			
PROJECT NUMBER 468-33894	DESIGN AEO	DRAWN TMS	
REVISIONS:	APPROVED	DATE 1/05	
	SCALE Noted	SHEET	
		<b>15</b>	<b>OF 32</b>
SouthernRidge2nd/SWS14		0408-E045	