

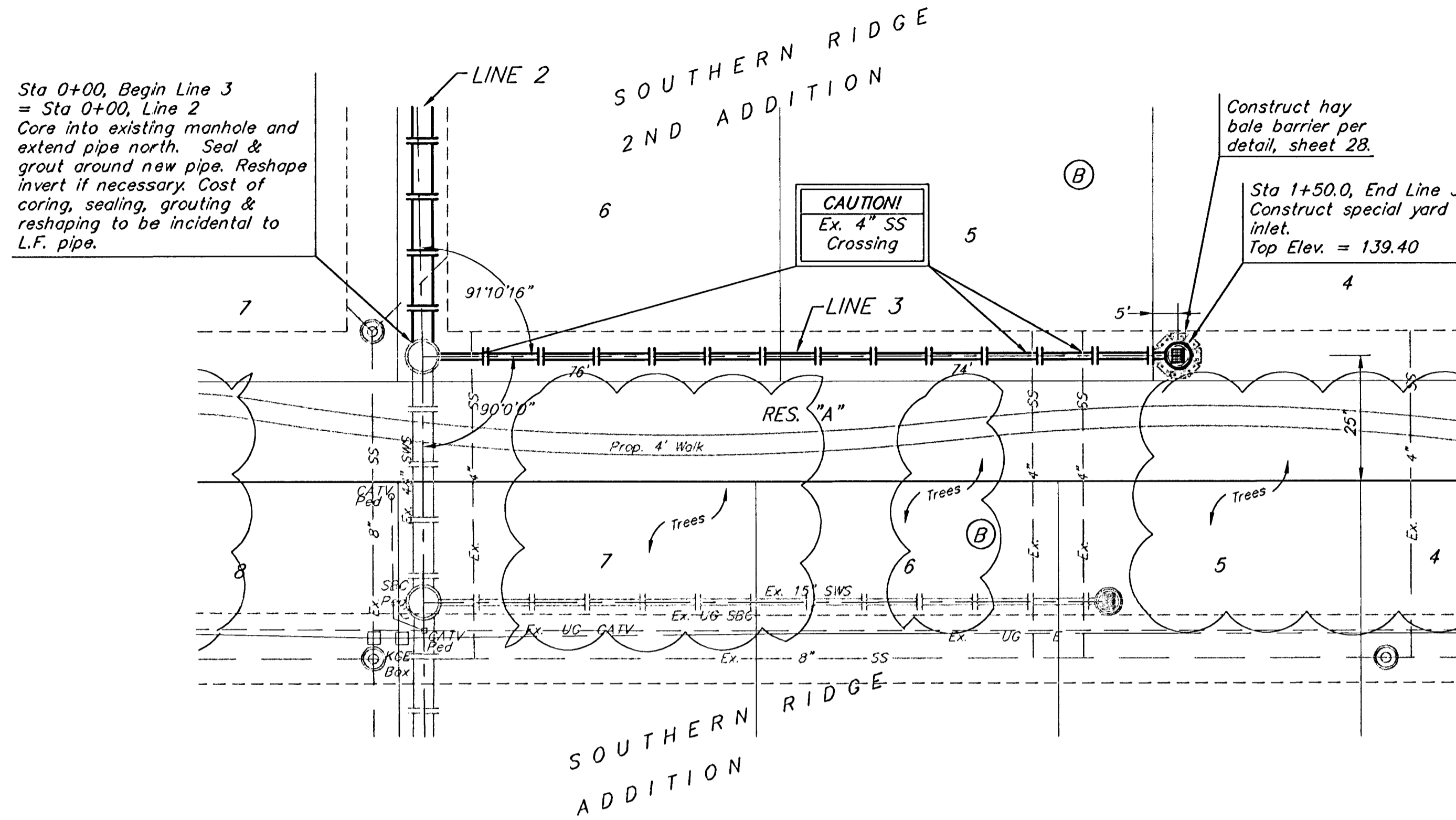
**BENCHMARKS:**  
 BM #1: COW Disc at South West  
 Corner of the Intersection of  
 Lark & Atlanta.  
 Elev. = 145.20 (City Datum)

BM #2: COW Disc at North West  
 side of Westgate at South End  
 of Lot 13 Block "B" Southern  
 Ridge Addition.  
 Elev. = 144.10 (City Datum)

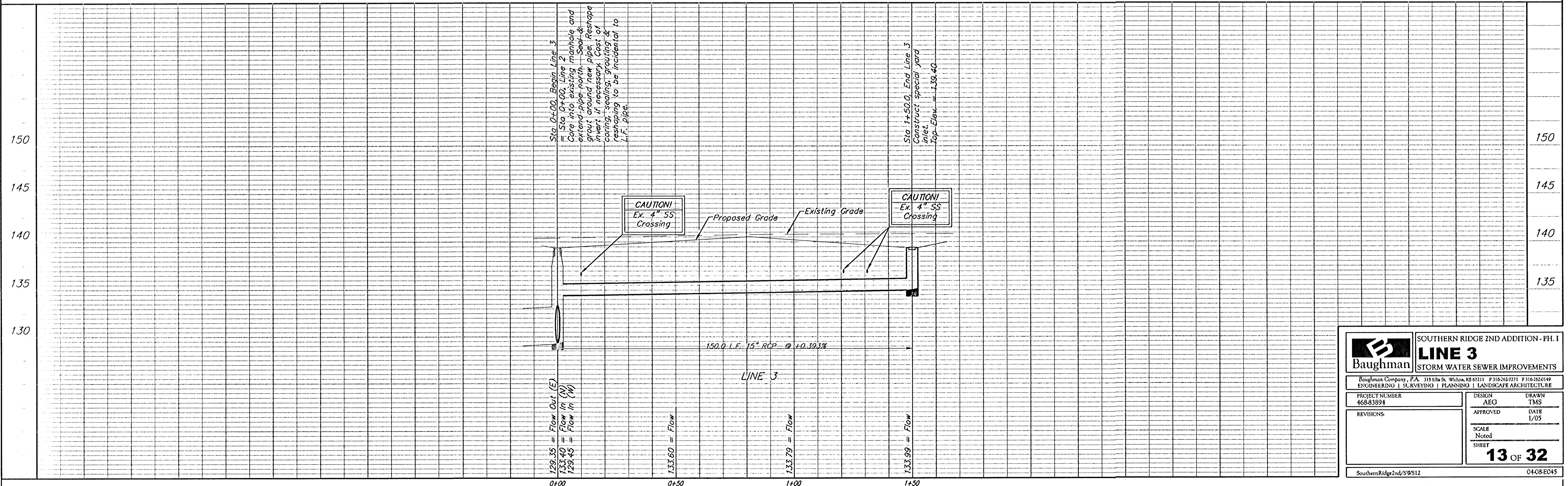
BM #3: COW BM at Shefford on  
 the south side of Pawnee Ave.  
 Elev. = 145.53 (City Datum)



Scale: 1" = 20' Horizontal  
 1" = 5' Vertical  
 • = Iron



Remove trees ONLY if approved  
 by Engineer as necessary for  
 storm sewer construction. Cost  
 of removal to be incidental to  
 lump sum bid item "Site Clearing  
 & Restoration".



<b>Baughman</b>		SOUTHERN RIDGE 2ND ADDITION - PH. 1	
		<b>LINE 3</b>	
		STORM WATER SEWER IMPROVEMENTS	
Baughman Company, P.A. 315 Ella St. Wichita, KS 67211 P 316-262-9211 F 316-262-0149 ENGINEERING   SURVEYING   PLANNING   LANDSCAPE ARCHITECTURE			
PROJECT NUMBER 468-9394	DESIGN AEG	DRAWN TMS	
REVISIONS:	APPROVED	DATE 1/05	
	SCALE Noted		
	SHEET	<b>13 OF 32</b>	
SouthernRidge2nd/SWS12		0408E045	