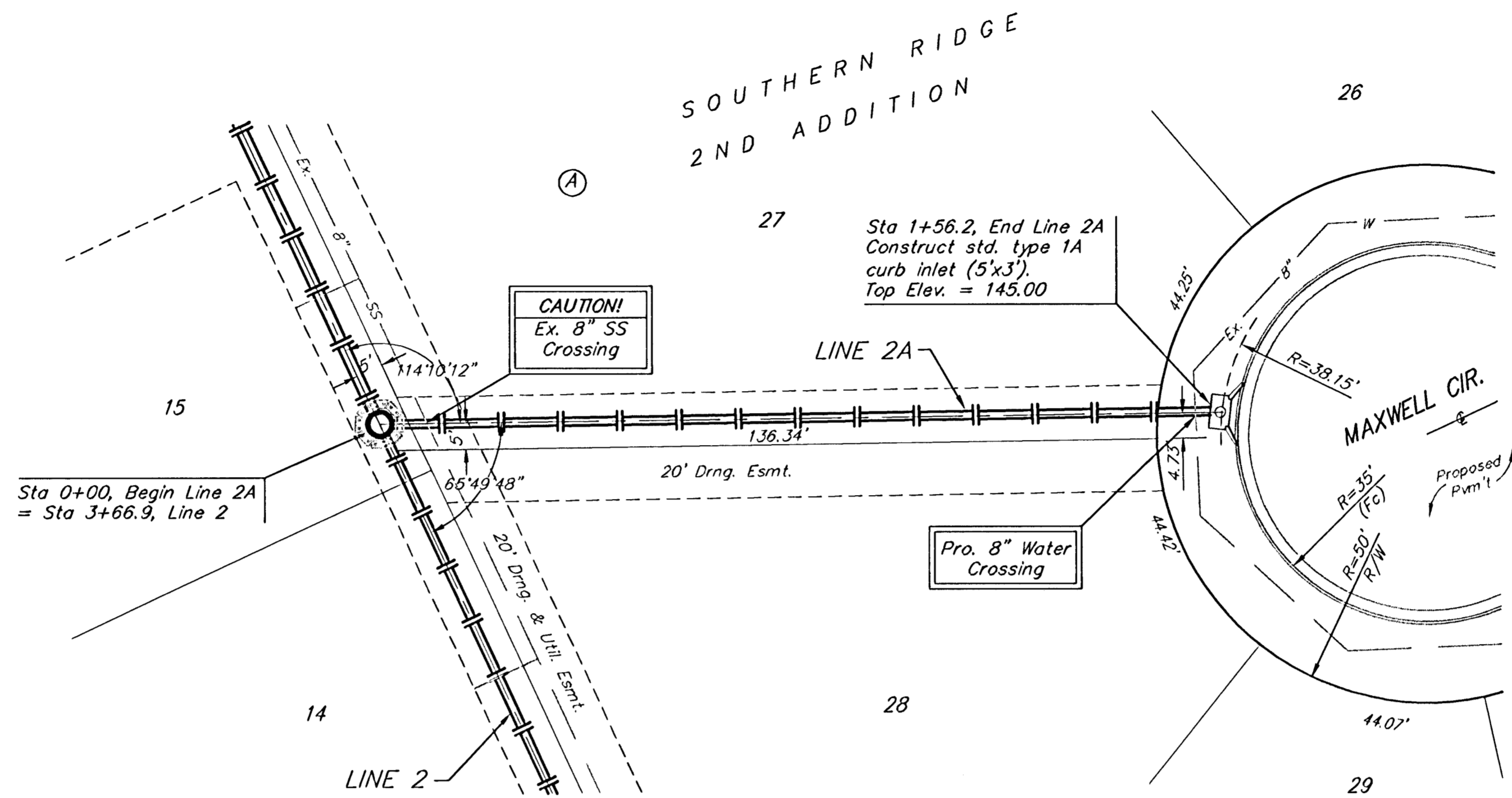


BENCHMARKS:
 BM #1: COW Disc at South West
 Corner of the Intersection of
 Lark & Atlanta.
 Elev. = 145.20 (City Datum)

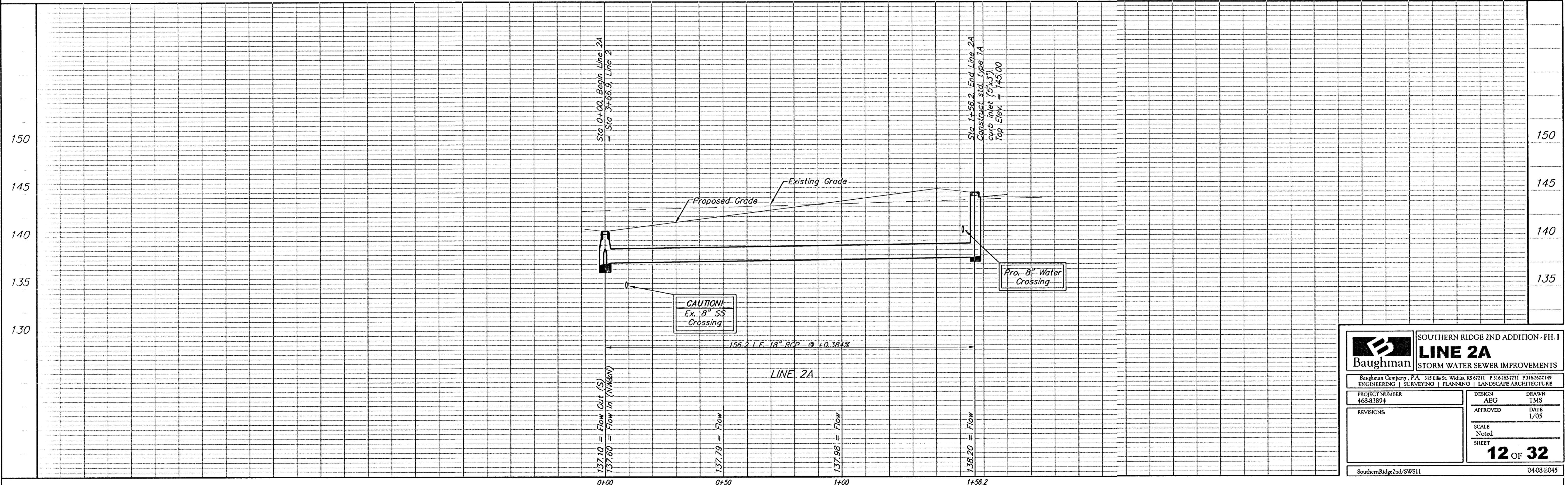
BM #2: COW Disc at North West
 side of Westgate at South End
 of Lot 13 Block "B" Southern
 Ridge Addition.
 Elev. = 144.10 (City Datum)

BM #3: COW BM at Shefford on
 the south side of Pawnee Ave.
 Elev. = 145.53 (City Datum)



Scale: 1" = 20' Horizontal
 1" = 5' Vertical
 • = Iron

Remove trees ONLY if approved
 by Engineer as necessary for
 storm sewer construction. Cost
 of removal to be incidental to
 lump sum bid item "Site Clearing
 & Restoration".



	SOUTHERN RIDGE 2ND ADDITION - PH. 1	
	LINE 2A	
STORM WATER SEWER IMPROVEMENTS		
<small>Baughman Company, P.A. 315 Ella St. Wichita, KS 67211 P 316-262-7171 F 316-262-0149 ENGINEERING SURVEYING PLANNING LANDSCAPE ARCHITECTURE</small>		
PROJECT NUMBER 468-83894	DESIGN AEG	DRAWN TMS
REVISIONS:	APPROVED DATE 1/05	SCALE Noted
		SHEET 12 OF 32
SouthernRidge2nd/SWS11		0408E045