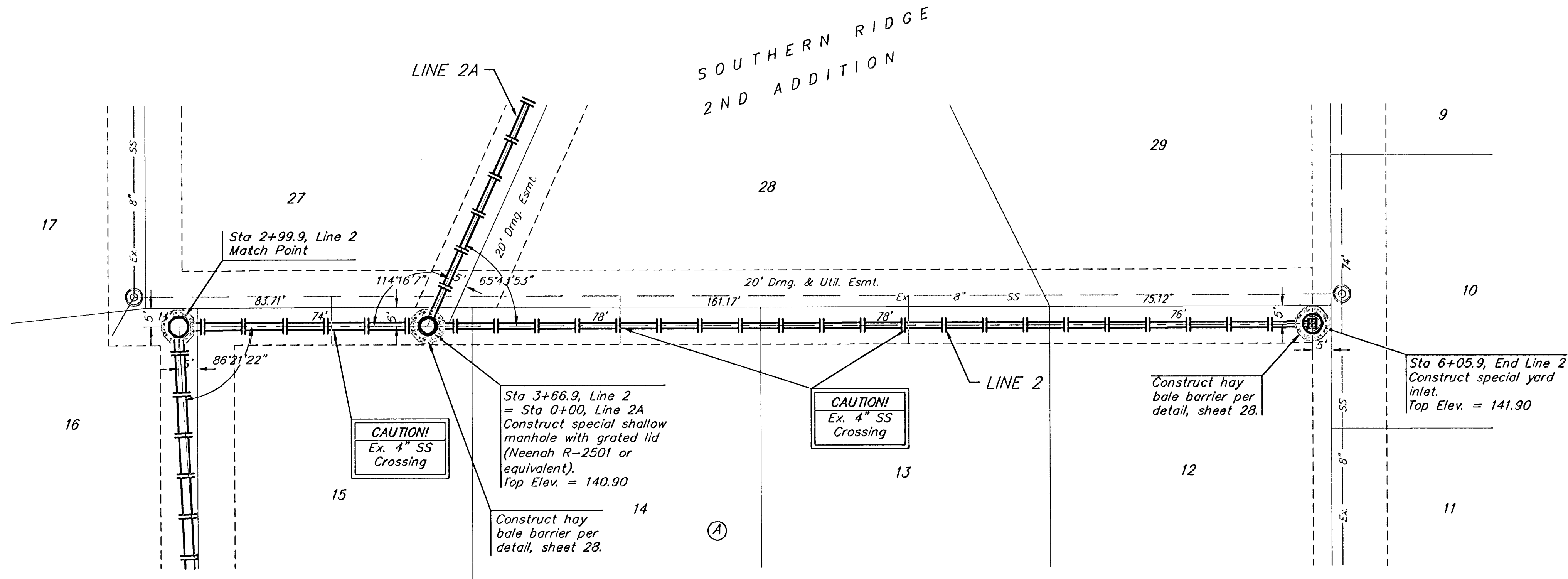


BENCHMARKS:
 BM #1: COW Disc at South West Corner of the Intersection of Lark & Atlanta.
 Elev. = 145.20 (City Datum)

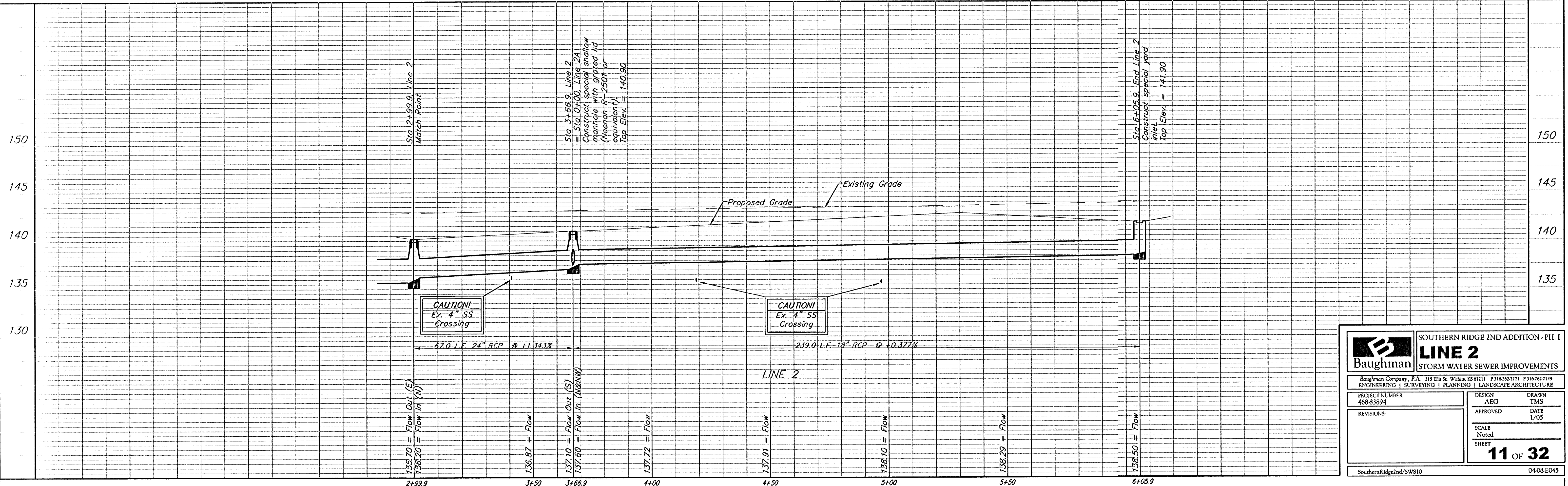
BM #2: COW Disc at North West side of Westgate at South End of Lot 13 Block "B" Southern Ridge Addition.
 Elev. = 144.10 (City Datum)

BM #3: COW BM at Shefford on the south side of Pawnee Ave.
 Elev. = 145.53 (City Datum)

Scale: 1" = 20' Horizontal
 1" = 5' Vertical
 • = Iron



Remove trees ONLY if approved by Engineer as necessary for storm sewer construction. Cost of removal to be incidental to lump sum bid item "Site Clearing & Restoration".



| | | | |
|---|----------------|-------------------------------------|--------------|
| | | SOUTHERN RIDGE 2ND ADDITION - PH. I | |
| | | LINE 2 | |
| ENGINEERING SURVEYING PLANNING LANDSCAPE ARCHITECTURE | | STORM WATER SEWER IMPROVEMENTS | |
| <small>Baughman Company, P.A. 315 Ellis St. Wichita, KS 67211 P 316-262-7271 F 316-262-0149</small> | | | |
| PROJECT NUMBER 468-93924 | DESIGN AEG | DRAWN TMS | |
| REVISIONS: | APPROVED | DATE 1/05 | |
| | SCALE Noted | SHEET | |
| | | 11 | OF 32 |
| SouthernRidge2nd/SWS10 | | 04-08-ED45 | |