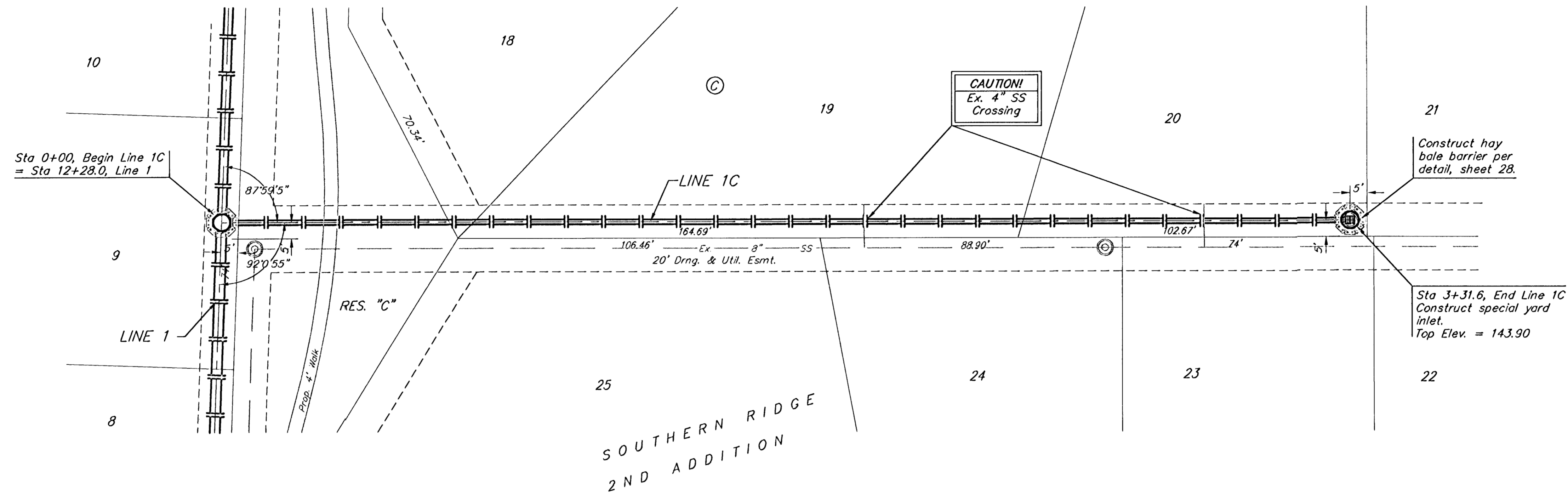
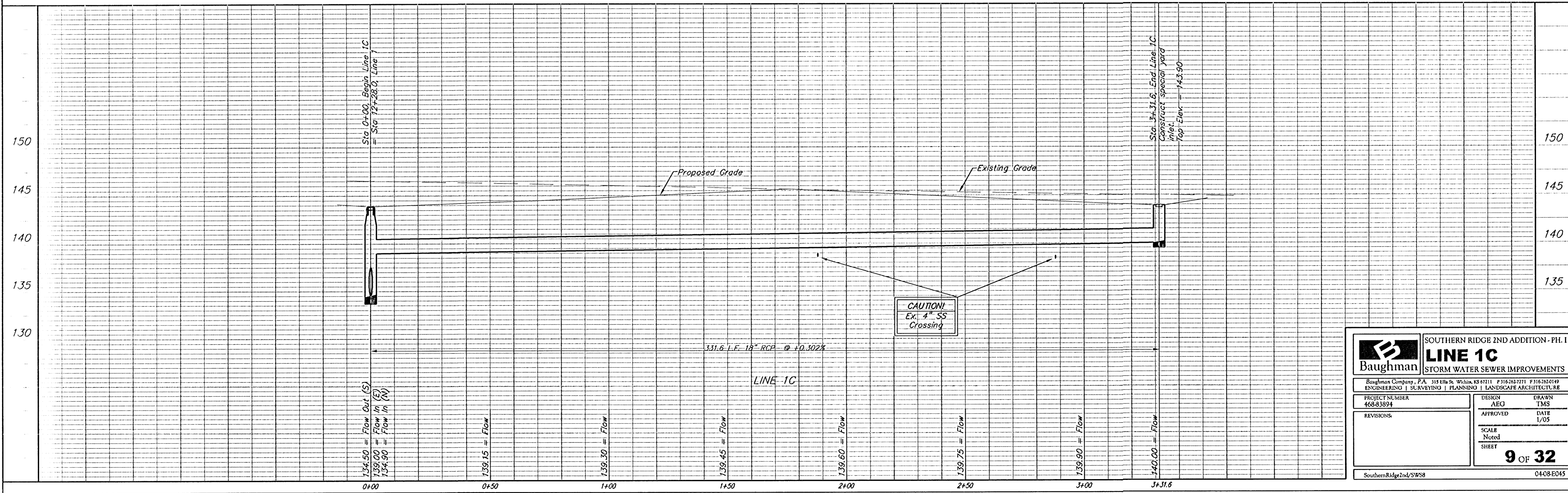


BENCHMARKS:
 BM #1: COW Disc at South West Corner of the Intersection of Lark & Atlanta. Elev. = 145.20 (City Datum)
 BM #2: COW Disc at North West side of Westgate at South End of Lot 13 Block "B" Southern Ridge Addition. Elev. = 144.10 (City Datum)
 BM #3: COW BM at Shefford on the south side of Pawnee Ave. Elev. = 145.53 (City Datum)

Scale: 1" = 20' Horizontal
 1" = 5' Vertical
 • = Iron



Remove trees ONLY if approved by Engineer as necessary for storm sewer construction. Cost of removal to be incidental to lump sum bid item "Site Clearing & Restoration".



		SOUTHERN RIDGE 2ND ADDITION - PH. I LINE 1C STORM WATER SEWER IMPROVEMENTS	
<small>Baughman Company, P.A. 315 Ella St. Wichita, KS 67211 P 316-263-7211 F 316-262-0149 ENGINEERING SURVEYING PLANNING LANDSCAPE ARCHITECTURE</small>			
PROJECT NUMBER 468-83894	DESIGN AEG	DRAWN TMS	DATE 1/05
REVISIONS:	APPROVED	SCALE Noted	SHEET 9 OF 32
<small>SouthernRidge2nd/SWS8</small>			<small>04-08-E045</small>