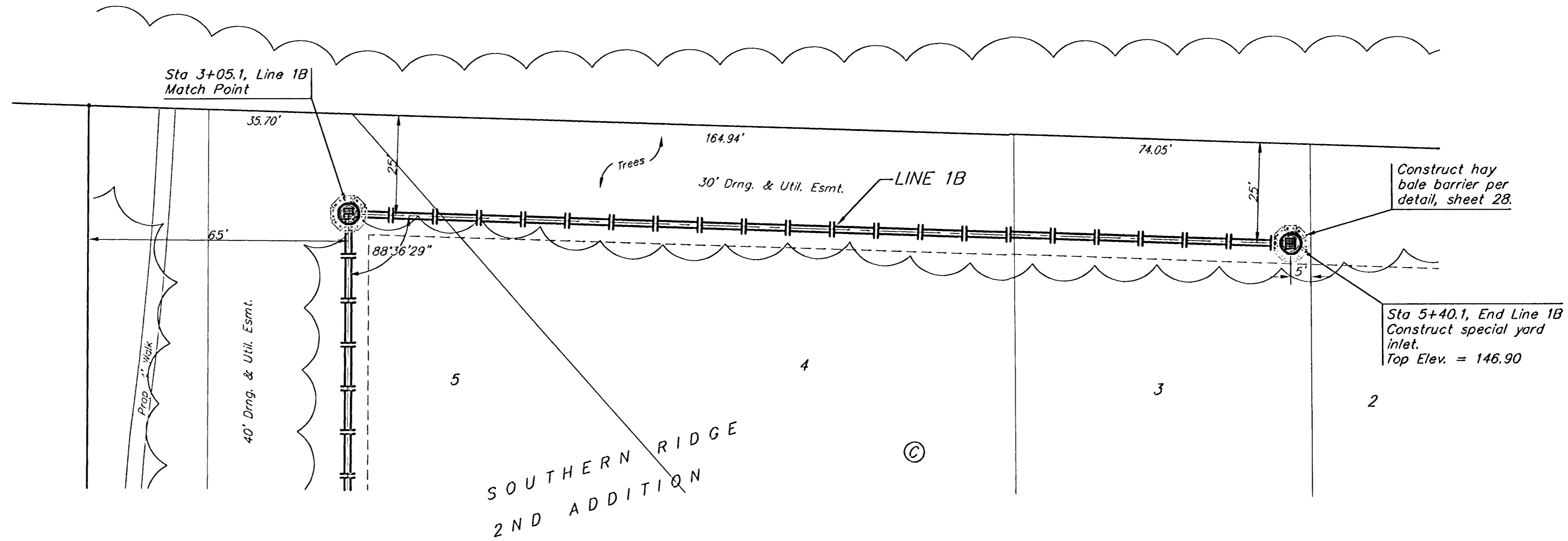
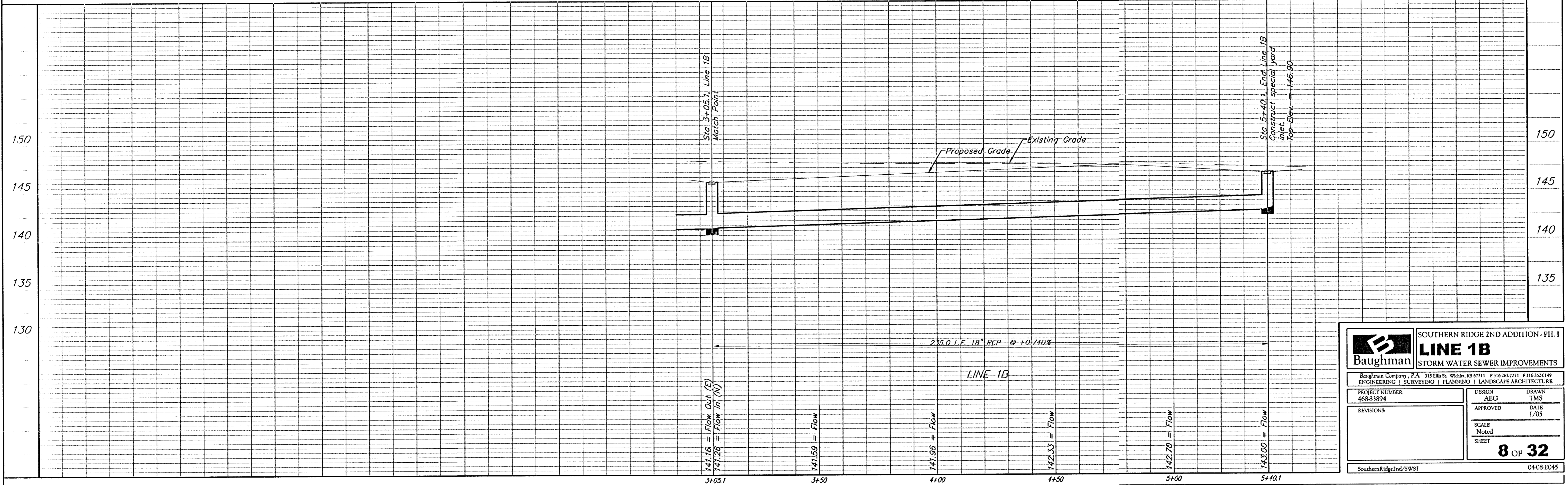


BENCHMARKS:
 BM #1: COW Disc at South West Corner of the Intersection of Lark & Atlanta. Elev. = 145.20 (City Datum)
 BM #2: COW Disc at North West side of Westgate at South End of Lot 13 Block "B" Southern Ridge Addition. Elev. = 144.10 (City Datum)
 BM #3: COW BM at Shefford on the south side of Pawnee Ave. Elev. = 145.53 (City Datum)

Scale: 1" = 20' Horizontal
 1" = 5' Vertical
 • = Iron



Remove trees ONLY if approved by Engineer as necessary for storm sewer construction. Cost of removal to be incidental to lump sum bid item "Site Clearing & Restoration".



	SOUTHERN RIDGE 2ND ADDITION - PH. 1 LINE 1B STORM WATER SEWER IMPROVEMENTS	
	<small>Baughman Company, P.A. 315 E. 11th St. Wichita, KS 67211 P 316.263.7271 F 316.263.0149 ENGINEERING SURVEYING PLANNING LANDSCAPE ARCHITECTURE</small>	
<small>PROJECT NUMBER 468-83874</small>	<small>DESIGN AEG</small>	<small>DRAWN TMS</small>
<small>REVISIONS:</small>	<small>APPROVED</small>	<small>DATE 1/05</small>
<small>SCALE Noted</small>		<small>SHEET</small>
8 OF 32		
<small>SouthernRidge2nd/SWS7</small>		<small>0408E045</small>