

BENCHMARKS:
 BM #1: COW Disc at South West Corner of the Intersection of Lark & Atlanta.
 Elev. = 145.20 (City Datum)

BM #2: COW Disc at North West side of Westgate at South End of Lot 13 Block "B" Southern Ridge Addition.
 Elev. = 144.10 (City Datum)

BM #3: COW BM at Shefford on the south side of Pawnee Ave.
 Elev. = 145.53 (City Datum)

Contractor to excavate sediment control basin as shown. Bottom elevation = 128.50. 4:1 sideslopes to match existing ground.

Sta 0+37.0, Line 1
 Begin construction of 42" RCP. 1 - 42" RC Headwall. 48.3 S.Y. heavy stone rip-rap.

Contractor to grade around end section and sediment basin to match into existing grade with slopes 4:1 or flatter.

Construct hay bale barrier per detail, sheet 28.

Sta 0+50.9, Line 1
 Construct std. manhole (6' dia.) Top Elev. = 142.20

Sta 2+22.0 to Sta 2+62.0
 Install 40.0 L.F. flowable fill per City specs.

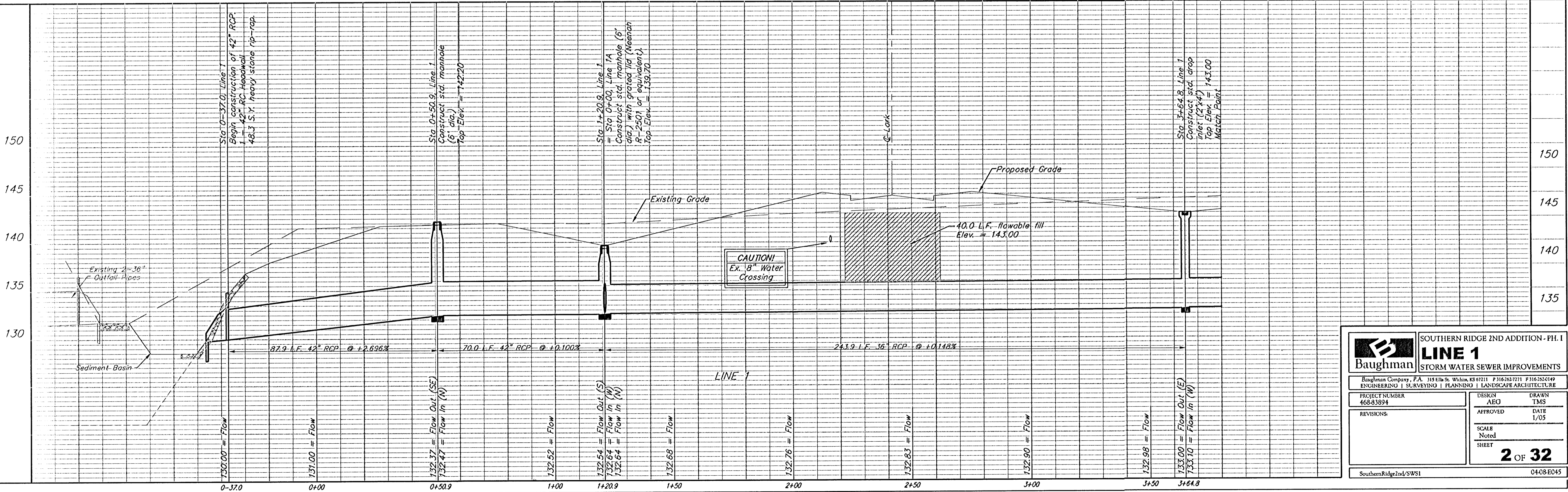
Construct hay bale barrier per detail, sheet 28.

Sta 3+64.8, Line 1
 Construct std. drop inlet (2'x4') Top Elev. = 143.00 Match Point

Remove trees ONLY if approved by Engineer as necessary for storm sewer construction. Cost of removal to be incidental to lump sum bid item "Site Clearing & Restoration".

All Miscellaneous Grading shown on this sheet shall be incidental to the lump sum bid item "Mass Grading".

SOUTHERN RIDGE
 2ND ADDITION
 LINE 1A



Scale: 1" = 20' Horizontal
 1" = 5' Vertical
 • = Iron

Baughman		SOUTHERN RIDGE 2ND ADDITION - PH. I	
LINE 1		STORM WATER SEWER IMPROVEMENTS	
Baughman Company, P.A. 315 Ellis St. Wichita, KS 67211 P 316-262-7711 F 316-262-0149			
ENGINEERING SURVEYING PLANNING LANDSCAPE ARCHITECTURE			
PROJECT NUMBER 468-8384	DESIGN AEG	DRAWN TMS	
REVISIONS:	APPROVED	DATE 1/05	
	SCALE Noted	SHEET	
		2 OF 32	
SouthernRidge2ndSWS1			0408-E045