

EVERY ATTEMPT HAS BEEN MADE TO INSURE ALL COORDINATE VALUES SHOWN ARE AN ACCURATE AND TRUE REPRESENTATION OF THE CURRENT PLANS. ALL VALUES ARE TO BE CONFIRMED WITH THE FINAL SIGNED PLAN SET BEFORE USE.



PAVING & INCIDENTAL DRAINAGE FOR
ESTANCIA ADDITION
 PHASE 3A

©2018 MKEC Engineering All Rights Reserved
 These drawings and their contents, including, but not limited to, all concepts, designs, & ideas are the exclusive property of MKEC Engineering (MKEC), and may not be used or reproduced in any way without the express consent of MKEC.

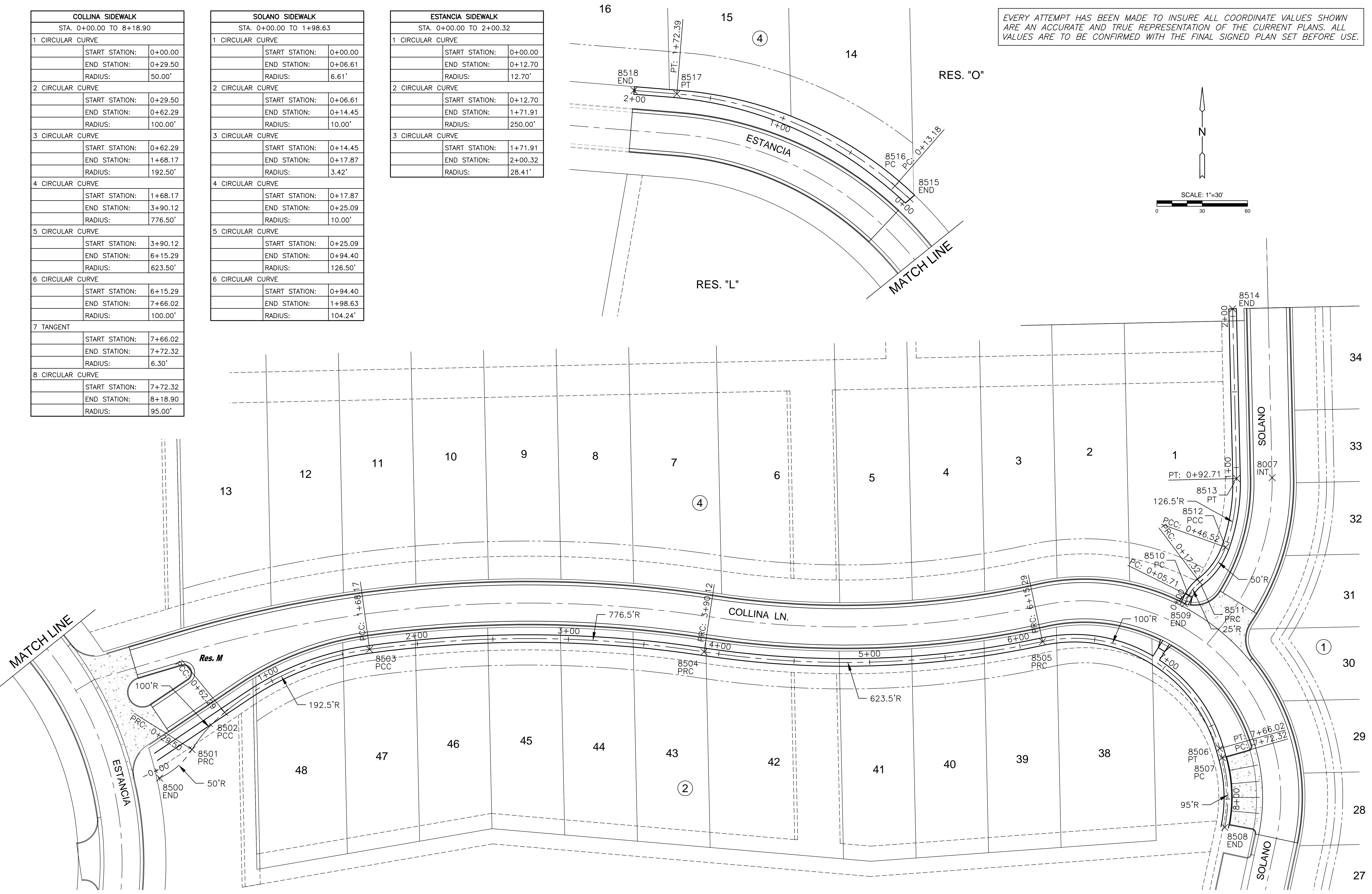
SIDEWALK PLAN

PROJECT NO.	472-85245	
DATE	SEPT. 2018	
SCALE	1" = 30'	
DESIGNED	DRAWN	CHECKED
DFL	JWC	GJA
NO.	REVISION	DATE
SHEET NO.		

COLLINA SIDEWALK STA. 0+00.00 TO 8+18.90	
1 CIRCULAR CURVE	
START STATION:	0+00.00
END STATION:	0+29.50
RADIUS:	50.00'
2 CIRCULAR CURVE	
START STATION:	0+29.50
END STATION:	0+62.29
RADIUS:	100.00'
3 CIRCULAR CURVE	
START STATION:	0+62.29
END STATION:	1+68.17
RADIUS:	192.50'
4 CIRCULAR CURVE	
START STATION:	1+68.17
END STATION:	3+90.12
RADIUS:	776.50'
5 CIRCULAR CURVE	
START STATION:	3+90.12
END STATION:	6+15.29
RADIUS:	623.50'
6 CIRCULAR CURVE	
START STATION:	6+15.29
END STATION:	7+66.02
RADIUS:	100.00'
7 TANGENT	
START STATION:	7+66.02
END STATION:	7+72.32
RADIUS:	6.30'
8 CIRCULAR CURVE	
START STATION:	7+72.32
END STATION:	8+18.90
RADIUS:	95.00'

SOLANO SIDEWALK STA. 0+00.00 TO 1+98.63	
1 CIRCULAR CURVE	
START STATION:	0+00.00
END STATION:	0+06.61
RADIUS:	6.61'
2 CIRCULAR CURVE	
START STATION:	0+06.61
END STATION:	0+14.45
RADIUS:	10.00'
3 CIRCULAR CURVE	
START STATION:	0+14.45
END STATION:	0+17.87
RADIUS:	3.42'
4 CIRCULAR CURVE	
START STATION:	0+17.87
END STATION:	0+25.09
RADIUS:	10.00'
5 CIRCULAR CURVE	
START STATION:	0+25.09
END STATION:	0+94.40
RADIUS:	126.50'
6 CIRCULAR CURVE	
START STATION:	0+94.40
END STATION:	1+98.63
RADIUS:	104.24'

ESTANCIA SIDEWALK STA. 0+00.00 TO 2+00.32	
1 CIRCULAR CURVE	
START STATION:	0+00.00
END STATION:	0+12.70
RADIUS:	12.70'
2 CIRCULAR CURVE	
START STATION:	0+12.70
END STATION:	1+71.91
RADIUS:	250.00'
3 CIRCULAR CURVE	
START STATION:	1+71.91
END STATION:	2+00.32
RADIUS:	28.41'



J:\PROJECTS\2018\1601010462 - PREMIER ESTANCIA\DWG\PAVING\RESIDENTIAL\PH3A\1601010462-EB-01-PA3A.DWG
 PLOTTED: Wednesday, September 19, 2018 @ 11:00AM