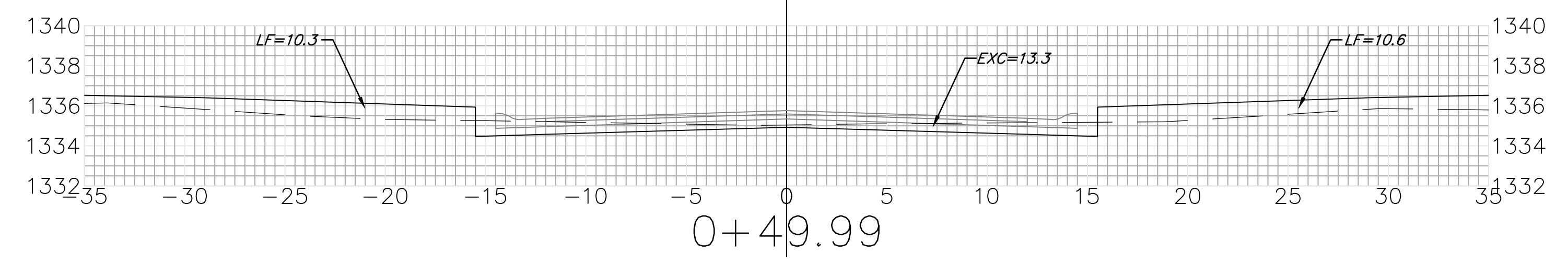
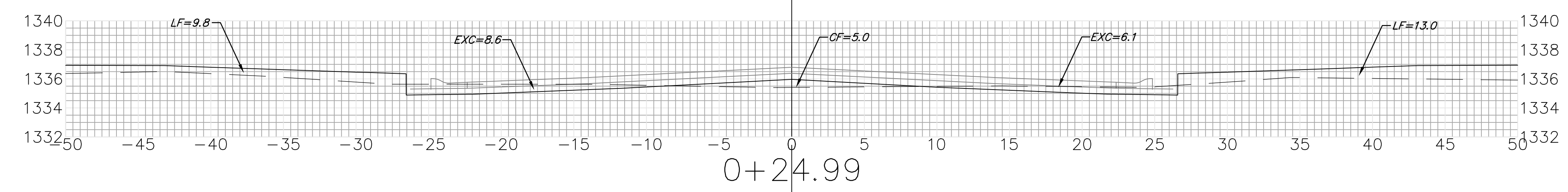


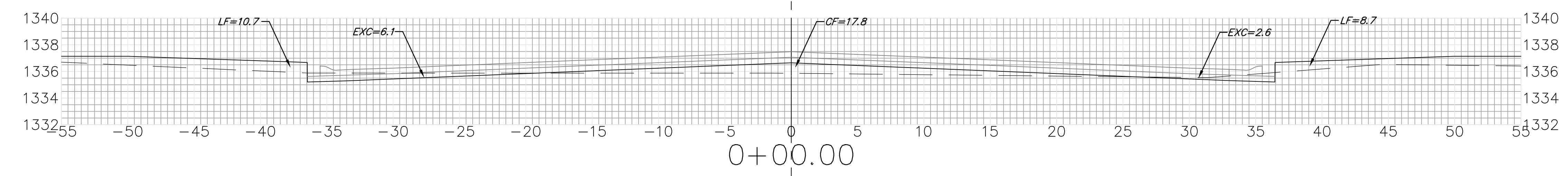
50.01' $\begin{matrix} EXC = 26.9 \\ LF = 35.7 \\ CF = 0.0 \end{matrix}$



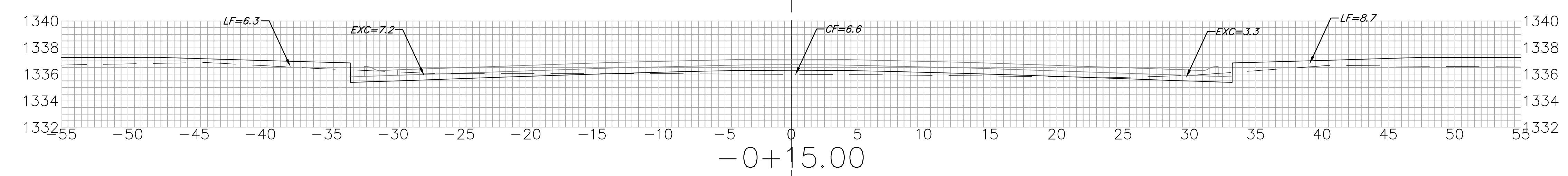
25.00' $\begin{matrix} EXC = 13.0 \\ LF = 20.2 \\ CF = 2.3 \end{matrix}$



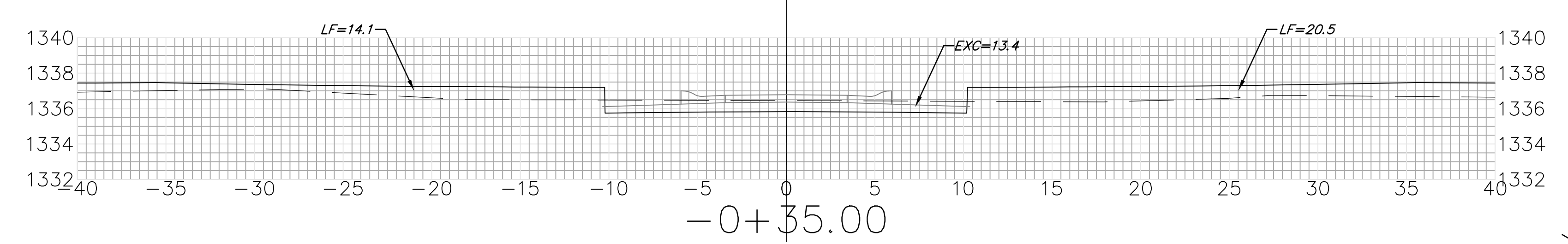
24.99' $\begin{matrix} EXC = 10.8 \\ LF = 19.5 \\ CF = 10.6 \end{matrix}$



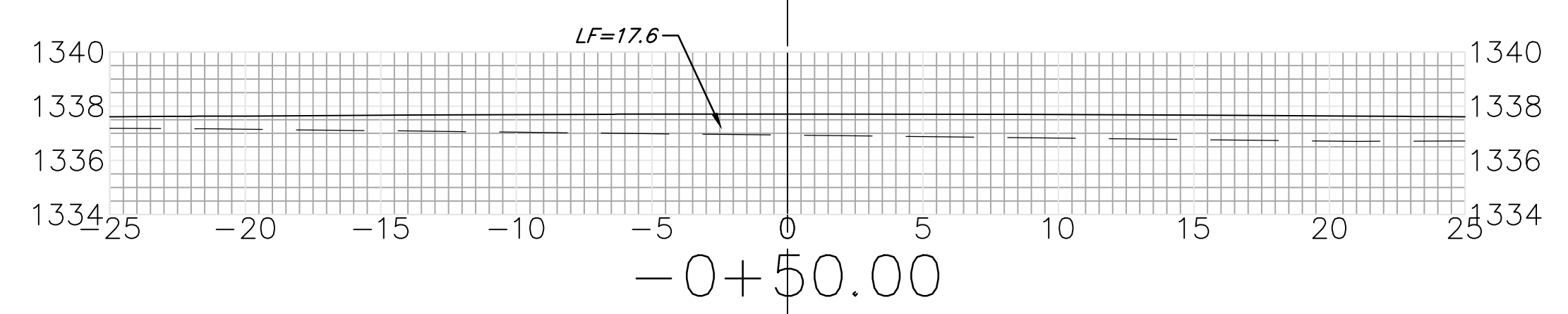
15.00' $\begin{matrix} EXC = 5.3 \\ LF = 9.6 \\ CF = 6.8 \end{matrix}$



20.00' $\begin{matrix} EXC = 8.9 \\ LF = 18.4 \\ CF = 2.4 \end{matrix}$




15.00' $\begin{matrix} EXC = 3.7 \\ LF = 14.5 \\ CF = 0.0 \end{matrix}$



STREET
Q

Sheet Totals
Excavation = 68.6 C.Y.
Loose Fill = 117.9 C.Y.
Compacted Fill = 22.1 C.Y.

	Baughman Company, P.A. 315 Ellis St. Wichita, KS 67211 P 316-262-7271 F 316-262-0144	
	ENGINEERING SURVEYING PLANNING LANDSCAPE ARCHITECTURE	PROJECT NUMBER
		SHEET 15 OF 19