

LATERAL 5, MAIN 6 (PART 1B)

OF THE

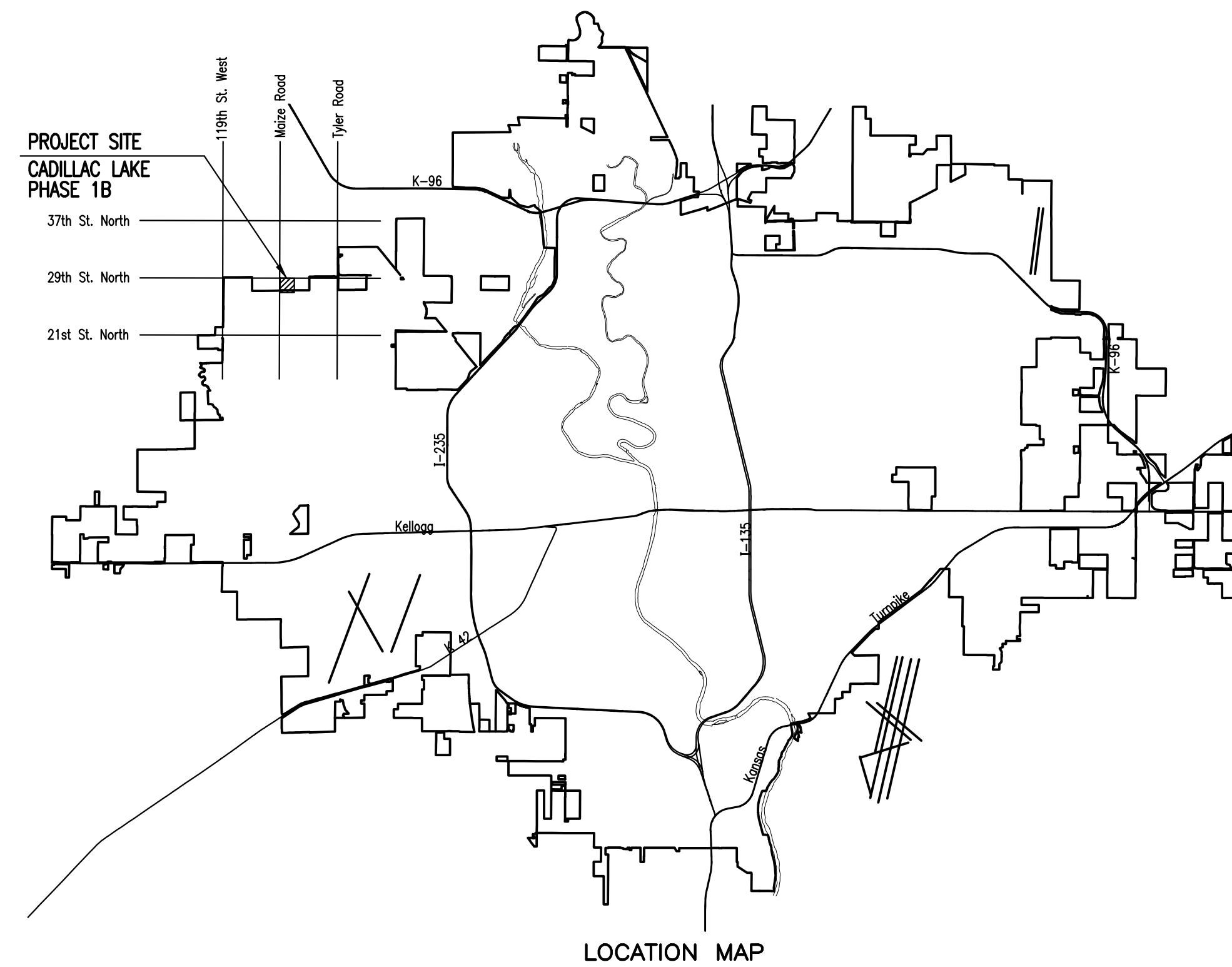
NORTHWEST INTERCEPTOR SEWER

IN

THE CITY OF WICHITA, KANSAS

CITY OF WICHITA PROJECT NO. 468-85058
 OCA NO. 744405
 GARY JANZEN, P.E. - CITY ENGINEER

Duling Construction - Contractor
J. Brand - City of Wichita, Field Project Engineer
T. Dvorak - City of Wichita, Inspector
 Stubs & Plugs
 Completion Date: 8/25/2017
 pdf: 8/1/2017 apr



DEVELOPER CONTACT

MR. DAVID HAMBRICK
 CADILLAC LAKE, L.L.C.
 727 N. WACO, SUITE 400
 WICHITA, KANSAS 67203
 (316) 263-3201

INDEX OF SHEETS

SHEET NO. 1	TITLE SHEET
SHEET NO. 2	KEY MAP AND GENERAL NOTES
SHEET NO. 3	SANITARY SEWER BUBBLE MAP
SHEET NO. 4	PLAT (CADILLAC LAKE)
SHEET NO. 5-10	SANITARY SEWER LINE NO. 1
SHEET NO. 11	PRECAST SANITARY SEWER MANHOLE
SHEET NO. 12	MANHOLE FRAME AND COVER DETAILS (SANITARY SEWER)
SHEET NO. 13	VERTICAL RISER ASSEMBLY SEWER DETAIL
SHEET NO. 14-16	SOIL EROSION BMP'S

CONSTRUCTION SCHEDULE/COORDINATION

THE CONTRACTOR FOR THE FOLLOWING PROJECTS SHALL COORDINATE THEIR EFFORTS SUCH THAT ANY NECESSARY SIMULTANEOUS CONSTRUCTION (INCLUDING PRIVATE PAVING/GRADING IMPROVEMENTS) CAN PROCEED CONCURRENTLY WITHOUT CAUSING UNDUE DELAYS SO THAT CONSTRUCTION CAN BE COMPLETED WITHIN THE TIME FRAME AS NOTED.

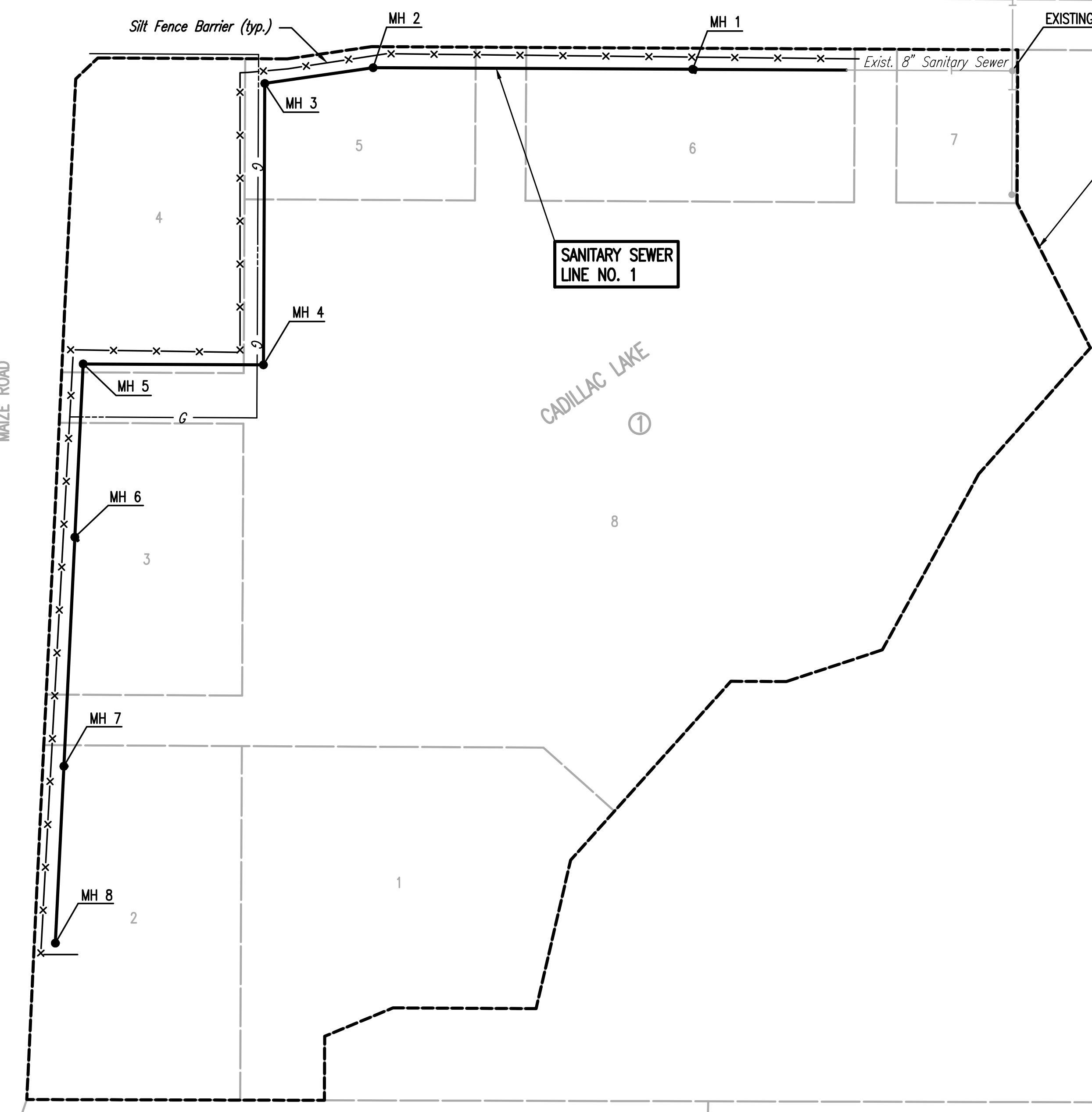
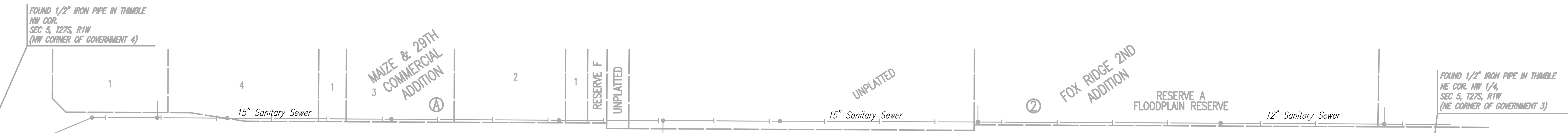
448-90686 WATER DISTRIBUTION SYSTEM (PHASE 1B)
 468-85058 LATERAL 5, MAIN 6 (PHASE 1B)

APRIL 2017

PLANS PREPARED BY
PROFESSIONAL ENGINEERING CONSULTANTS, P.A.
 ENGINEERS
 WICHITA, KANSAS



SCALE: 1" = 100'



BENEFIT DISTRICT

SANITARY SEWER LINE NO. 1

GENERAL NOTES

- ALL CONSTRUCTION AND MATERIALS TO COMPLY WITH CITY OF WICHITA SPECIFICATIONS AND STANDARDS AND SPECIAL PROVISIONS.
- ALL ELEVATIONS SHOWN ARE NAVD88 DATUM.
- CONTRACTOR WILL BE REQUIRED TO PROVIDE A MINIMUM ADVANCE NOTICE OF SEVENTY-TWO (72) HOURS TO UTILITY COMPANIES PRIOR TO STARTING ANY EXCAVATION AS FOLLOWS:

KANSAS ONE-CALL	687-2470 or 811
THE CONTRACTOR MUST NOTIFY THE FOLLOWING IN CASE OF AN EMERGENCY:	
EMERGENCY DISPATCH	911
COX COMMUNICATIONS	800-778-9140
KANSAS GAS SERVICE	888-482-4950
WESTAR ENERGY	800-363-1163
BLACK HILLS ENERGY	800-694-8989
AT&T	800-286-8313
WICHITA WATER UTILITIES (SS AND WL)	262-6000
- THE CONTRACTOR SHALL LIMIT THE EXTENT OF TRENCH TO REMAIN OPEN OVERNIGHT AND WEEKENDS TO LESS THAN 50 FEET.
- AT LEAST 72 HOURS PRIOR TO BEGINNING EXCAVATION (EXCLUDING WEEKENDS AND HOLIDAYS), THE CONTRACTOR SHALL CONTACT THE KANSAS ONE-CALL SYSTEM, A UTILITY LOCATION SERVICE, AT (316) 687-2470 OR 811 TO REQUEST THE LOCAL UTILITY COMPANIES MARK ANY EXISTING LINES WITHIN THE PROJECT AREA.
- UNDERGROUND UTILITY SERVICE LINES AND OVERHEAD UTILITY POLE LINES ARE TO BE ADJUSTED AS NECESSARY BY OTHERS PRIOR TO CONSTRUCTION UNLESS THE DRAWINGS SPECIFICALLY CALL FOR THEIR ADJUSTMENT BY THE CONTRACTOR OR UNLESS THE DRAWINGS SPECIFICALLY IDENTIFY A UTILITY TO BE ADJUSTED BY ITS OWNER DURING CONSTRUCTION. EXISTING UTILITIES AND THEIR LOCATIONS, AS SHOWN ON THE DRAWINGS, REPRESENT THE BEST INFORMATION OBTAINABLE FOR THE DESIGN. THE CONTRACTOR WILL BE REQUIRED TO WORK AROUND EXISTING UTILITIES WITHIN THE RIGHT-OF-WAY WHICH DO NOT CONFLICT WITH PROPOSED CONSTRUCTION.
- THE CONTRACTOR SHALL BE RESPONSIBLE FOR PRESERVING PROPERTY IRONS. THE CONTRACTOR WILL BE REQUIRED TO RE-ESTABLISH ANY PROPERTY IRONS WHICH ARE DAMAGED OR DESTROYED BY HIS CONSTRUCTION OPERATIONS. SUCH IRONS SHALL BE RE-ESTABLISHED BY A LICENSED LAND SURVEYOR IN ACCORDANCE WITH STATE LAWS. ALL COSTS FOR THIS WORK SHALL BE SUBSIDIARY TO THE LUMP SUM PRICE BID FOR "SITE RESTORATION".
- CONTRACTOR SHALL PROVIDE POSITIVE DRAINAGE AWAY FROM ALL MANHOLE COVERS.
- MANHOLES SHALL BE STANDARD MANHOLES. MANHOLES SHALL BE CONSTRUCTED IN ACCORDANCE WITH THE STANDARD SPECIFICATIONS AND THE STANDARD DETAIL DRAWINGS.
- RUBBLE FROM THE REMOVAL OF MISCELLANEOUS STRUCTURES INCLUDING ANY TREES REMOVED, TREE TRIMMINGS, AND EXCESS EXCAVATION WHICH IS TO BE WASTED SHALL BE DISPOSED OF ON SITES PROVIDED BY THE CONTRACTOR. THESE SITES SHALL ALSO BE APPROVED BY THE ENGINEER AS TO SUITABILITY, APPEARANCE, AND SITE LOCATION. LOCATIONS THAT, IN THE OPINION OF THE ENGINEER, WILL LEAVE AN UNSIGHTLY APPEARANCE WILL NOT BE APPROVED. ALL DISPOSAL SITES MUST BE APPROVED BY THE KANSAS DEPARTMENT OF HEALTH AND ENVIRONMENT. MATERIAL EITHER STOCKPILED OR DISPOSED OF IN A FLOOD PLAIN WILL REQUIRE A KANSAS STATE BOARD OF AGRICULTURE PERMIT. ANY MATERIAL DUMPED IN WATERS OF THE UNITED STATES OR WETLANDS IS SUBJECT TO U.S. CORPS OF ENGINEERS PERMITTING REGULATIONS. ANY MATERIAL BURIED OR STOCKPILED BEYOND APPROVED CONSTRUCTION LIMITS MAY REQUIRE ARCHAEOLOGICAL INVESTIGATIONS UNLESS BURIED IN A PREVIOUSLY APPROVED DISPOSAL LOCATION.
- ALL APPROVED EXCESS EXCAVATION WHICH IS TO BE WASTED SHALL BE STOCKPILED WITHIN LOT 1, BLOCK 1, CADILLAC LAKE AT NO ADDITIONAL COST TO THE OWNER. STOCKPILE LOCATIONS SHALL BE AS DIRECTED BY THE OWNER AND IN ACCORDANCE WITH GENERAL NOTE NO. 10 ABOVE.
- THE CONTRACTOR SHALL SEED ALL AREAS DISTURBED BY CONSTRUCTION ACTIVITIES WITH TEMPORARY RYE GRASS. RYE GRASS SEED SHALL BE PLANTED AT A MINIMUM RATE OF SIX (6) POUNDS PER ONE THOUSAND (1,000) SQUARE FEET. THIS TEMPORARY SEEDING MAY BE OMITTED ONLY IF OTHER SEEDING IS REQUIRED IN ACCORDANCE WITH GENERAL NOTE NO. 12 ABOVE. TEMPORARY SEEDING OR PERMANENT SEEDING/SODDING SHALL BE APPLIED WITHIN 14 DAYS AFTER THE AREA HAS BEEN DISTURBED.
- THE CONTRACTOR SHALL AVOID REMOVAL OR TRIMMING OF ANY TREES OR SHRUBS WHERE POSSIBLE. WHERE THE CONTRACTOR BELIEVES THE REMOVAL OR TRIMMING IS UNAVOIDABLE, HE SHALL COORDINATE SUCH WORK WITH THE ENGINEER. COSTS FOR TREE/SHRUB REMOVAL AND TRIMMING REGARDLESS OF SIZE SHALL BE CONSIDERED SUBSIDIARY TO THE LUMP SUM PRICE BID FOR "SITE CLEARING".
- THE CONTRACTOR SHALL PREVENT ANY CONSTRUCTION DEBRIS FROM ENTERING THE EXISTING SANITARY SEWER DURING CONSTRUCTION.
- EACH BIDDER SHALL VISIT THE SITE OF THE PROJECT BEFORE SUBMITTING THE PROPOSAL FOR THIS WORK SO THAT HE WILL BE FULLY INFORMED OF THE EXISTING FIELD CONDITIONS AND THE OBSTACLES WHICH MIGHT BE ENCOUNTERED. UPON AWARD OF THE CONTRACT THE CONTRACTOR WILL NOT BE GRANTED ANY ADDITIONAL COMPENSATION WITH REGARDS TO TIME AND MONEY FOR CONDITIONS THAT MAY HAVE BEEN EVALUATED DURING ANY INSPECTION OF THE SITE.
- THE CONTRACTOR SHALL GIVE ALL PROPERTY OWNERS AND/OR TENANTS OF DEVELOPED PROPERTY ADJACENT TO THE CONSTRUCTION OF THIS PROJECT A MINIMUM OF TEN (10) DAYS ADVANCE NOTICE PRIOR TO START OF CONSTRUCTION.
- THE CONTRACTOR IS REQUIRED TO MAINTAIN CONTINUOUS FLOW OF SEWAGE IN EXISTING MAINS AT ALL TIMES.
- THE CONTRACTOR SHALL NOT BURY MANHOLES THAT HAVE RIM ELEVATIONS WHICH ARE LOWER THAN EXISTING GROUND AT THE MANHOLE. THE GROUND AROUND SUCH MANHOLES AND ALONG THE SEWER ALIGNMENT SHALL BE BACKFILLED TO THE APPROXIMATE ELEVATION OF THE PROPOSED GROUND ELEVATION SHOWN ON THE PLAN/PROFILE SHEETS. THE CONTRACTOR SHALL PROVIDE DRAINAGE AWAY FROM THESE MANHOLES AND SEWER LINES BY CONSTRUCTION OF TEMPORARY DITCHES OR SLOPING THE GROUND AS REQUIRED. ALL COSTS FOR THIS WORK SHALL BE CONSIDERED SUBSIDIARY TO THE INSTALLED BID PRICE FOR MANHOLES OR PIPE.
- THE CONTRACTOR SHALL PROVIDE MOUND EARTH AT MANHOLES AND CLEANOUTS THAT HAVE TOP ELEVATIONS GREATER THAN 1 FOOT ABOVE EXISTING GRADE, AS SHOWN ON THE DRAWINGS. COSTS FOR MOUNDING SHALL BE CONSIDERED SUBSIDIARY TO THE PRICE BID PER EACH FOR MANHOLES.
- THE CONTRACTOR SHALL NOT START WORK ON THE PROJECT UNTIL THE PROJECT INSPECTOR IS ASSIGNED TO THE PROJECT AND IS PRESENT ON THE SITE. ANY WORK DONE WITHOUT INSPECTION WILL BE REQUIRED TO BE UNCOVERED FOR INSPECTION.
- INTERURBAN TRAFFIC GENERATED OUTSIDE THE PROJECT AREA AND LOCAL BUSINESS OR RESIDENTIAL TRAFFIC GENERATED WITHIN THE PROJECT AREA ARE TO BE CARRIED THROUGH CONSTRUCTION AS FURTHER PROMULGATED BY PROJECT SPECIAL PROVISIONS. THE CONTRACTOR SHALL UTILIZE BARRICADES, SIGNS, GUARDS, AND FLAGMEN IN ACCORDANCE WITH THE MANUAL ON UNIFORM TRAFFIC CONTROL DEVICES.
- WHERE INDICATED IN THE DRAWINGS, THE SANITARY SEWER EXCAVATION SHALL BE SAND FILLED AND FLUSHED (JETTED AND VIBRATED) WITH WATER PER THE REQUIREMENTS LISTED IN THE STANDARD SPECIFICATIONS FOR THE CITY OF WICHITA, UNLESS FLOWABLE FILL OR OTHER IMPROVED BACKFILL MATERIAL IS OTHERWISE SPECIFIED. ALL COSTS FOR SAND FILLING AND FLUSHING SHALL BE INCLUDED IN THE UNIT PRICE BID FOR "JETTED SAND BACKFILL".
- THE CONTRACTOR SHALL INSTALL AND/OR MAINTAIN EROSION CONTROL METHODS AS SPECIFIED ON SHEETS 13-15. THE MINIMUM EFFORT REQUIRED. THE GENERAL LOCATION OF THE REQUIRED EROSION CONTROL IS ILLUSTRATED ON THE PROJECT KEY MAP. THE SANITARY SEWER CONTRACTOR SHALL BE RESPONSIBLE FOR MAINTAINING THE EROSION CONTROL SHOWN THROUGH THE COMPLETION OF THIS PROJECT. INSTALLATION OF THESE BMP'S DOES NOT RELIEVE THE CONTRACTOR OF THE RESPONSIBILITY OF ABATING SOIL EROSION.

UNPLATTED

FOUND 1/2" REBAR WITH TERRA TECH CAP
SE COR., N 1/2, NW 1/4,
SEC 5, T27S, R1W
(SE CORNER OF GOVERNMENT 3)

FOUND 1/2" IRON PIPE IN THIMBLE
NW COR.,
SEC 5, T27S, R1W
(NW CORNER OF GOVERNMENT 4)

FOUND 1/2" REBAR WITH PEC CAP
SW COR., N 1/2, NW 1/4,
SEC 5, T27S, R1W
(SW CORNER OF GOVERNMENT 4)
SET FOR ALTA SURVEY DATED 2/17/2014

LEGEND

- EXISTING SANITARY SEWER
- - - PROPOSED SANITARY SEWER
- EXISTING SANITARY SEWER W/MANHOLE
- PROPOSED SANITARY SEWER W/MANHOLE
- x-x-x SILT FENCE BARRIER

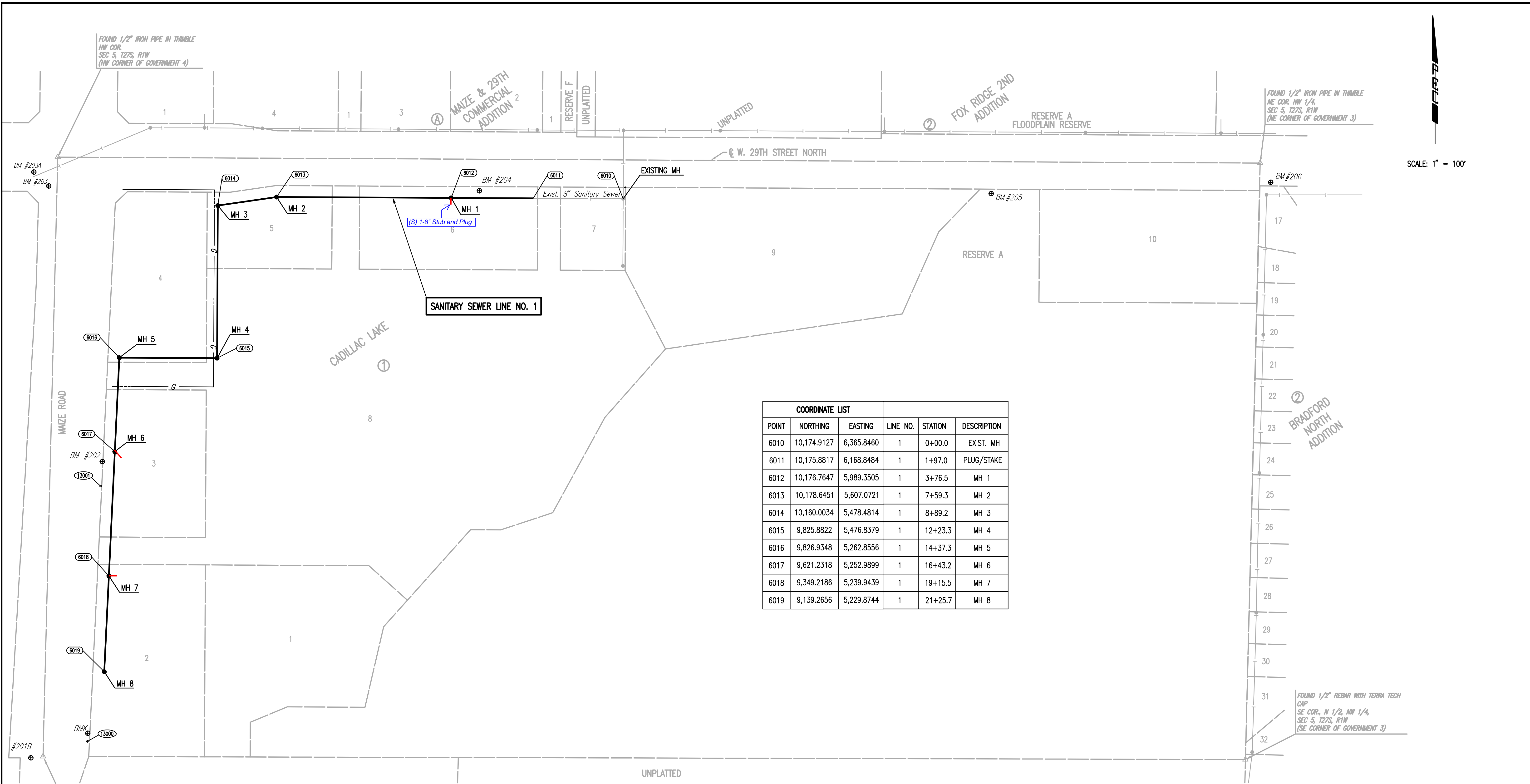
SEE SHEET NO. 3 FOR SANITARY SEWER COORDINATES.
SEE SHEET NO. 4 FOR PLAT COORDINATES.

Sowed 04-13-2017 10:58:42 AM by CSI
 Plot Scale 1:2,500 04-25-2017 1:11:32 PM by CADRI LINK
 U:\Wichita-Civil\2015\15138\001\Main\Drawings\PHASE 1B\Key Map and General Notes

No.	Revision	By	Date
LATERAL 5, MAIN 6 (PHASE 1B) OF THE NORTHWEST INTERCEPTOR SEWER			
KEY MAP AND GENERAL NOTES			
GARY JANZEN, P.E. - CITY ENGINEER CITY OF WICHITA PROJECT NO. 468-85058			
PROFESSIONAL ENGINEERING CONSULTANTS, P.A. 303 SOUTH TOPEKA WICHITA, KS 67202 316-262-2691 www.pec1.com			
Designed by	CSB, SAD	Job No.	35-15138-001-42
Drawn by	CSL	Date	JANUARY 2017

Sht. 2 of 16

SCALE: 1" = 100'



COORDINATE LIST					
POINT	NORTHING	EASTING	LINE NO.	STATION	DESCRIPTION
6010	10,174.9127	6,365.8460	1	0+00.0	EXIST. MH
6011	10,175.8817	6,168.8484	1	1+97.0	PLUG/STAKE
6012	10,176.7647	5,989.3505	1	3+76.5	MH 1
6013	10,178.6451	5,607.0721	1	7+59.3	MH 2
6014	10,160.0034	5,478.4814	1	8+89.2	MH 3
6015	9,825.8822	5,476.8379	1	12+23.3	MH 4
6016	9,826.9348	5,262.8556	1	14+37.3	MH 5
6017	9,621.2318	5,252.9899	1	16+43.2	MH 6
6018	9,349.2186	5,239.9439	1	19+15.5	MH 7
6019	9,139.2656	5,229.8744	1	21+25.7	MH 8

BENCH MARK LIST

- BM #201 - CENTER OF TELEPHONE MANHOLE, 46.2' EAST OF EAST EDGE OF ASPHALT SHOULDER MAIZE ROAD., 17.90' NORTH OF CP 13000. ELEV.=1350.20 (NAVD88)
- BM #202 - CHISELED "X" ON NORTH RIM OF TELEPHONE MANHOLE AT PVC TELEPHONE MARKER POST, 35 FEET SOUTH OF POWER POLE #62115, ON EAST SIDE OF ASPHALT BIKE PATH ON EAST SIDE OF MAIZE ROAD, 4 POLES NORTH OF TARGET, 3 POLES SOUTH OF 29TH STREET NORTH ELEV.= 1350.53 (NAVD88)
- BM #203 - CHISELED SQUARE AT SOUTHEAST CORNER OF SOUTH HEADWALL FOR RCBC UNDER 29TH STREET, WEST OF MAIZE MAIZE ROAD (NOT THE CHISELED + AT THE SOUTHWEST CORNER OF SAME HEADWALL) ELEV.= 1353.32 (NAVD88)
- BM #204 - CHISELED SQUARE ON TOP OF RETAINING WALL AT SOUTHEAST CORNER OF CONCRETE PAD FOR ELECTRIC TRANSFORMER #10105 ON SOUTH SIDE OF 29TH STREET AND 800 FEET EAST OF BIKE PATH ON EAST SIDE OF MAIZE ROAD. ELEV.= 1352.01 (NAVD88)
- BM #205 - CHISELED SQUARE ON HIGH POINT OF EAST WINGWALL AT SOUTH END OF RCBC UNDER 29TH STREET, 600 FEET WEST OF NORTH 1/4 CORNER SECTION 5-27-1W, FOR POND GOING SOUTH. ELEV.= 1350.99 (NAVD88)
- BM #206 - CHISELED SQUARE ON NORTH EDGE OF CURVY SIDEWALK AT FIRE HYDRANT ON SOUTH SIDE OF 29TH STREET, 1/2 MILE EAST OF MAIZE ROAD, SOUTHEAST OF N 1/4 CORNER SEC 5-27-1W ELEV.= 1350.92 (NAVD88)

CONTROL POINTS

- Pt. No. 13000
1/2" REBAR W/BUE CAP
N: 8,986.6030, E: 5,192.8790
1. 23.40' SW TO NORTH END RCP
2. 22.10' S TO POWER POLE
3. 17.50' NNE TO TELEPHONE MARKER
- Pt. No. 13001
1/2" REBAR W/BUE CAP
N: 9,545.8770, E: 5,221.7200
1. 51.93' NNE TO TELEPHONE MARKER
2. 22.10' S TO LIGHT POLE
3. 40.09' W TO EAST EDGE ASPHALT SHOULDER

FOUND 1/2" REBAR WITH PEC CAP
SW COR., N 1/2, NW 1/4,
SEC 5, T27S, R1W
(SW CORNER OF GOVERNMENT 4)
SET FOR ALTA SURVEY DATED 2/17/2014

FOUND 1/2" IRON PIPE IN THIMBLE
NW COR.
SEC 5, T27S, R1W
(NW CORNER OF GOVERNMENT 4)

FOUND 1/2" REBAR WITH TERRA TECH
CAP
SE COR., N 1/2, NW 1/4,
SEC 5, T27S, R1W
(SE CORNER OF GOVERNMENT 3)

FOUND 1/2" IRON PIPE IN THIMBLE
NE COR. NW 1/4,
SEC 5, T27S, R1W
(NE CORNER OF GOVERNMENT 3)

Served 04-13-2017 1:42:25 PM by: CSL
 Plot Scale 1:2,500 04-25-2017 1:11:39 PM by: CATHY LINK
 U:\Wichita-Civil\2015\15138\001\Drawings\PHASE 1B\15138-001-1B-03-SANITARY SEWER BUBBLE MAP

No.	Revision	By	Date

**LATERAL 5, MAIN 6 (PHASE 1B)
OF THE NORTHWEST INTERCEPTOR SEWER**

SANITARY SEWER BUBBLE MAP

GARY JANZEN, P.E. - CITY ENGINEER
CITY OF WICHITA PROJECT NO. 468-85058

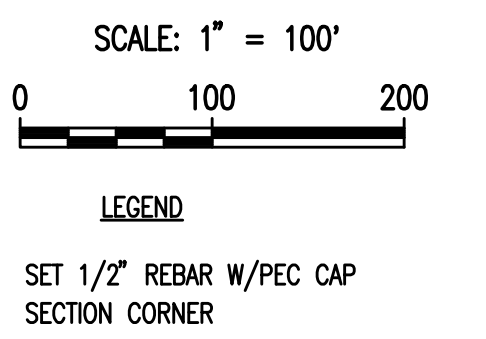
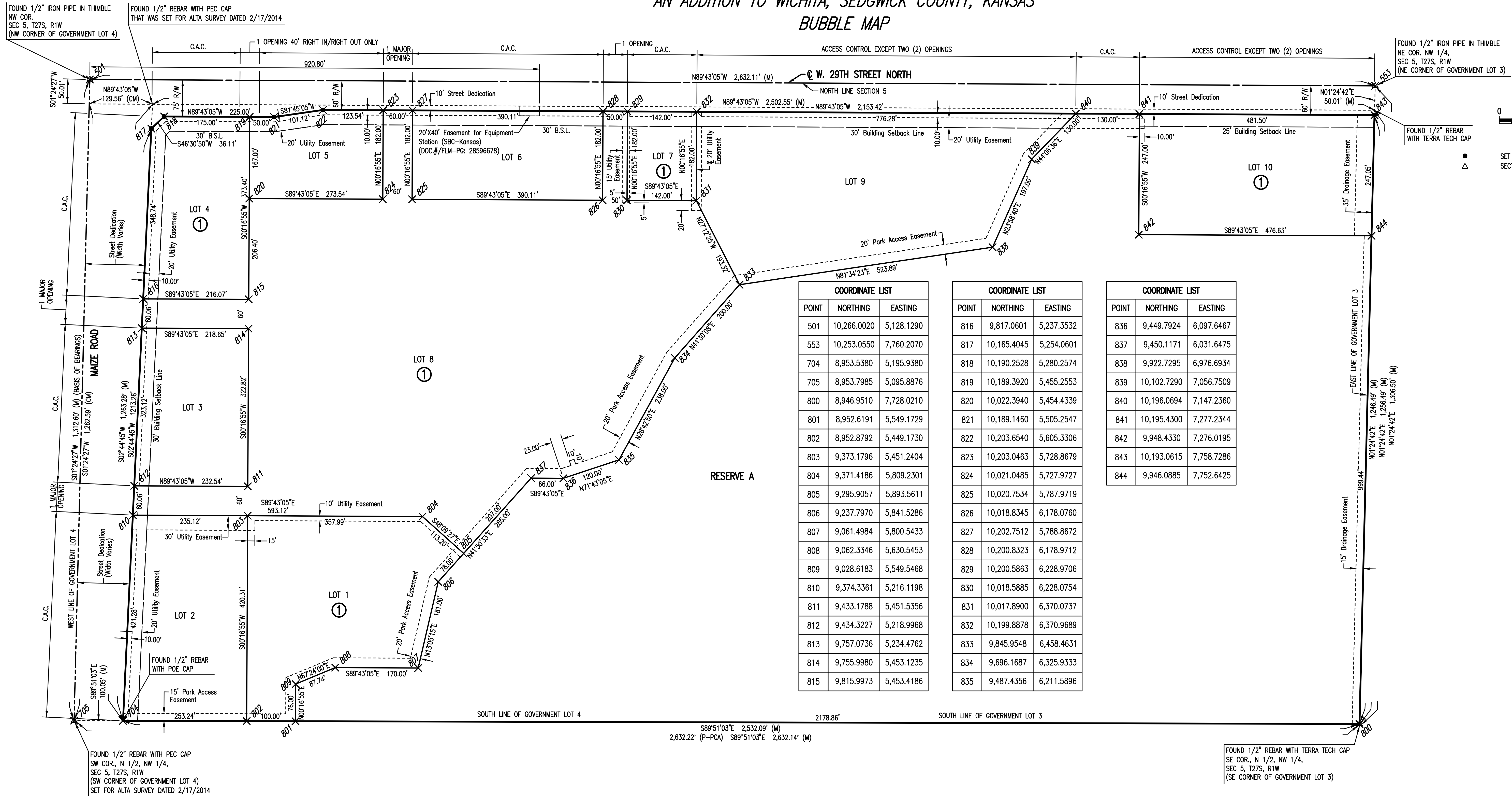
PROFESSIONAL ENGINEERING CONSULTANTS, P.A.
303 SOUTH TOPEKA WICHITA, KS 67202
316-262-2691 www.pec1.com

Designed by	CSB, SAD	Job No.	35-15138-001-42	Sht. 3 of 16
Drawn by	CSL	Date	JANUARY 2017	

CADILLAC LAKE

AN ADDITION TO WICHITA, SEDGWICK COUNTY, KANSAS

BUBBLE MAP



POINT	NORTHING	EASTING
501	10,266.0020	5,128.1290
553	10,253.0550	7,760.2070
704	8,953.5380	5,195.9380
705	8,953.7985	5,095.8876
800	8,946.9510	7,728.0210
801	8,952.6191	5,549.1729
802	8,952.8792	5,449.1730
803	9,373.1796	5,451.2404
804	9,371.4186	5,809.2301
805	9,295.9057	5,893.5611
806	9,237.7970	5,841.5286
807	9,061.4984	5,800.5433
808	9,062.3346	5,630.5453
809	9,028.6183	5,549.5468
810	9,374.3361	5,216.1198
811	9,433.1788	5,451.5356
812	9,434.3227	5,218.9968
813	9,757.0736	5,234.4762
814	9,755.9980	5,453.1235
815	9,815.9973	5,453.4186

POINT	NORTHING	EASTING
816	9,817.0601	5,237.3532
817	10,165.4045	5,254.0601
818	10,190.2528	5,280.2574
819	10,189.3920	5,455.2553
820	10,022.3940	5,454.4339
821	10,189.1460	5,505.2547
822	10,203.6540	5,605.3306
823	10,203.0463	5,728.8679
824	10,021.0485	5,727.9727
825	10,020.7534	5,787.9719
826	10,018.8345	6,178.0760
827	10,202.7512	5,788.8672
828	10,200.8323	6,178.9712
829	10,200.5863	6,228.9706
830	10,018.5885	6,228.0754
831	10,017.8900	6,370.0737
832	10,199.8878	6,370.9689
833	9,845.9548	6,458.4631
834	9,696.1687	6,325.9333
835	9,487.4356	6,211.5896

POINT	NORTHING	EASTING
836	9,449.7924	6,097.6467
837	9,450.1171	6,031.6475
838	9,922.7295	6,976.6934
839	10,102.7290	7,056.7509
840	10,196.0694	7,147.2360
841	10,195.4300	7,277.2344
842	9,948.4330	7,276.0195
843	10,193.0615	7,758.7286
844	9,946.0885	7,752.6425

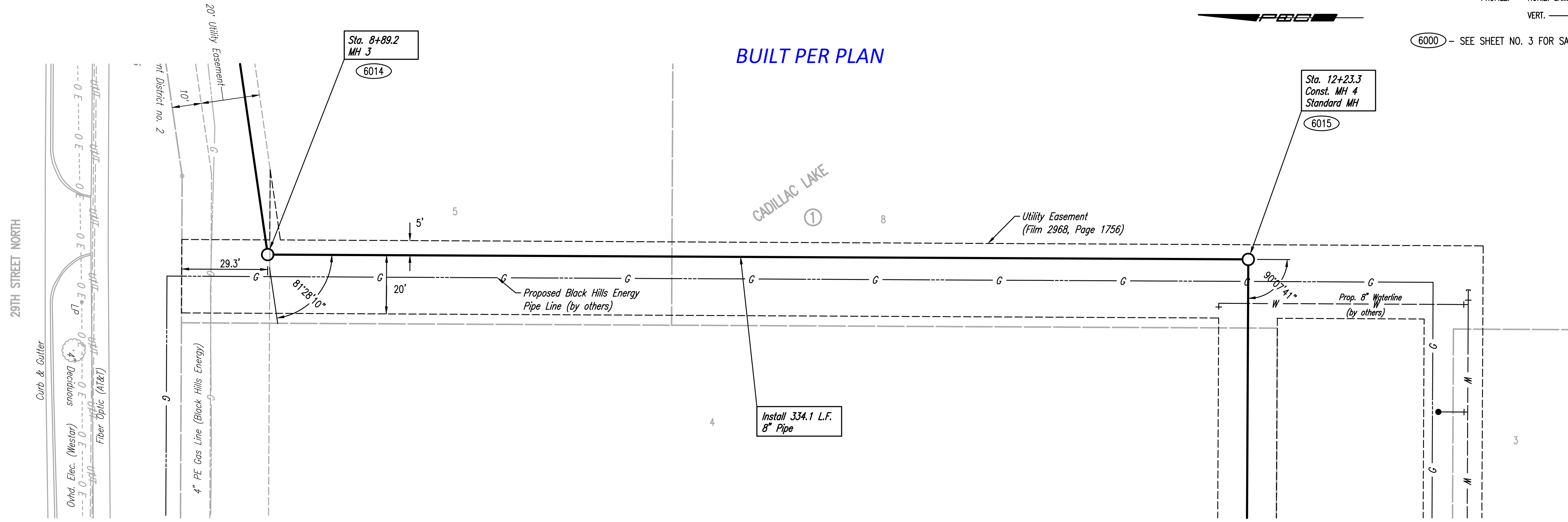
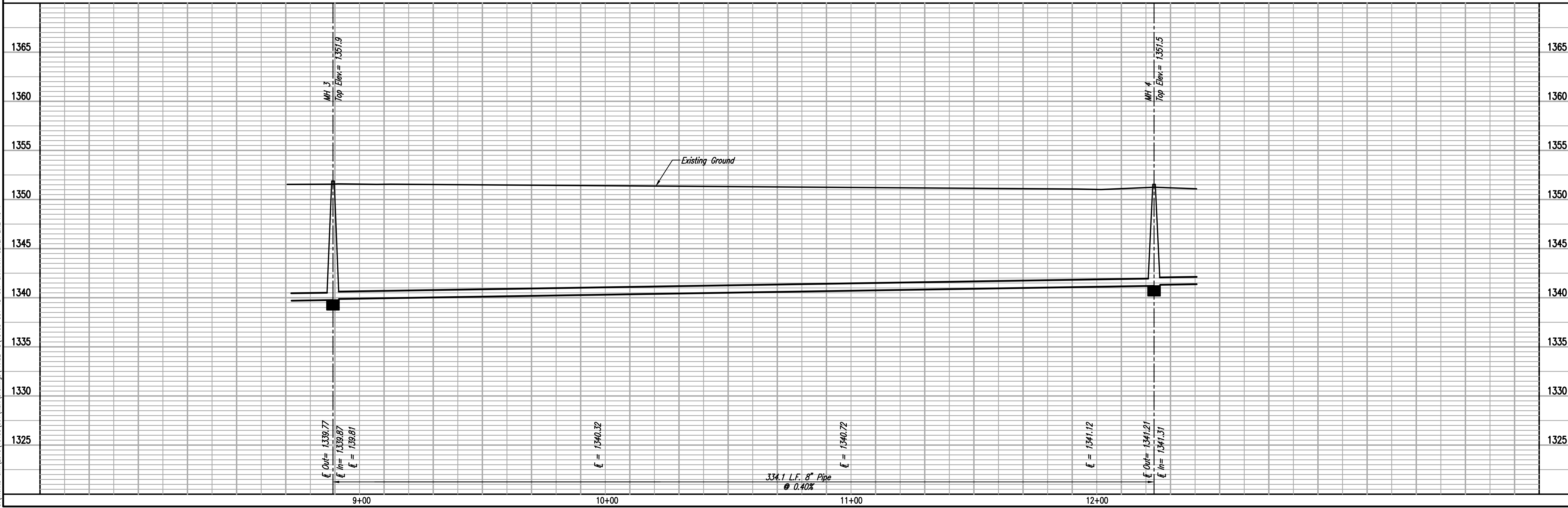
Scaled 04-13-2017 2:21:06 PM by CSL
 Plot Scale 1:25,000 04-25-2017 1:11:49 PM by CADILLAC LAKE
 U:\Wichita-Civil\2015\15138\001\Drawings\PHASE 1B\15138-001-1B-C04-PLAT (CADILLAC LAKE)

No.	Revision	By	Date
LATERAL 5, MAIN 6 (PHASE 1B) OF THE NORTHWEST INTERCEPTOR SEWER PLAT (CADILLAC LAKE) GARY JANZEN, P.E. - CITY ENGINEER CITY OF WICHITA PROJECT NO. 468-85058			
PROFESSIONAL ENGINEERING CONSULTANTS, P.A. 303 SOUTH TOPEKA WICHITA, KS 67202 316-262-2691 www.pec1.com			
Designed by	CSB, SAD	Job No.	35-15138-001-42
Drawn by	CSL	Date	JANUARY 2017
			Sht. 4 of 16

PLAN	CHECKED	BY	DATE
	CHECKED		

PROFILE	CHECKED	BY	DATE
	CHECKED		

Saved: 04-25-2017 2:19:38 PM by CSI
 Plot Scale: 1:25000 04-25-2017 2:19:55 PM by CATHY LINK
 U:\Wichita-Civil\2015\15138\001\Mun\Drawings\PHASE 1B\15138-001-1B-C07-SANITARY SEWER LINE NO 1



SANITARY SEWER LINE NO. 1

SCALE:

PLAN: LAT. & LONG. 0 20 40 5

PROFILE: HORIZ. SAME AS ABOVE

VERT. 0 5

6000 - SEE SHEET NO. 3 FOR SANITARY SEWER COORDINATES (TYP.)



LATERAL 5, MAIN 6 (PHASE 1B)
OF THE NORTHWEST INTERCEPTOR SEWER
SANITARY SEWER LINE NO. 1

GARY JANZEN, P.E. - CITY ENGINEER
 CITY OF WICHITA PROJECT NO. 468-85058

PEC
 PROFESSIONAL ENGINEERING CONSULTANTS P.A.
 303 SOUTH TOPEKA WICHITA, KS 67202
 316-262-2691 www.pec1.com

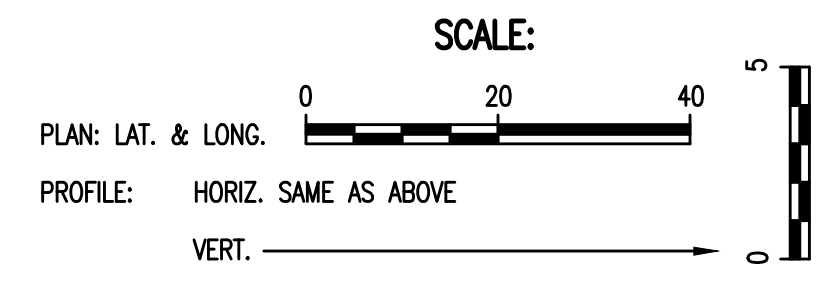
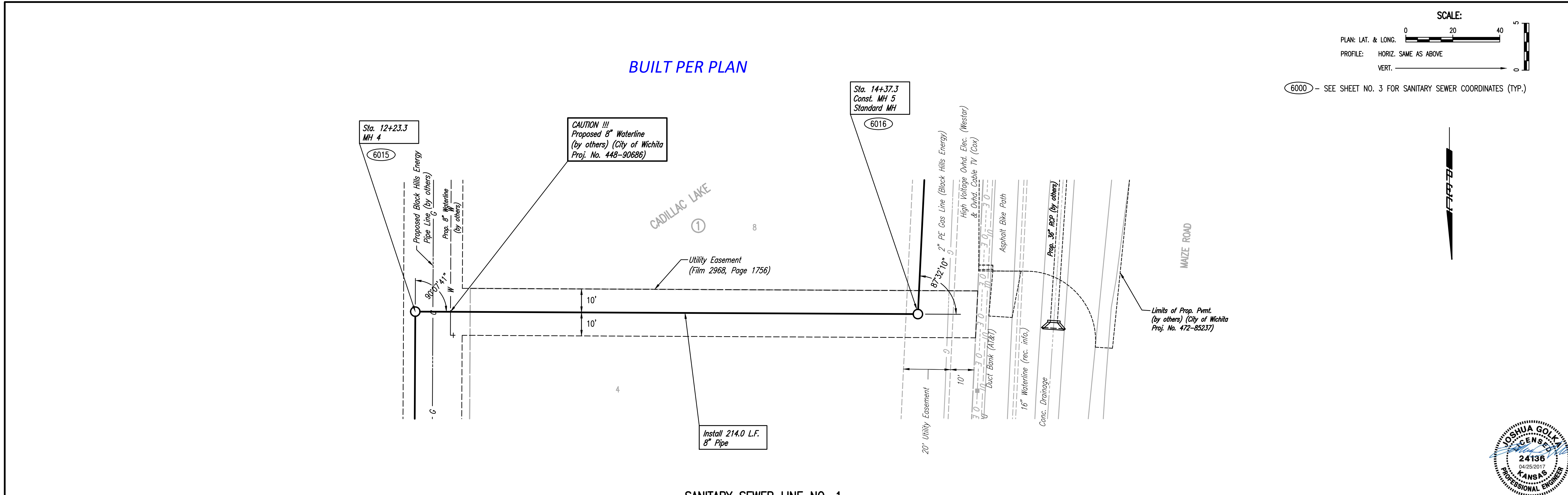
Designed By: CSB, S4D
 Drawn By: CSL

Job No. 35-15138-001-42
 Date: JANUARY 2017

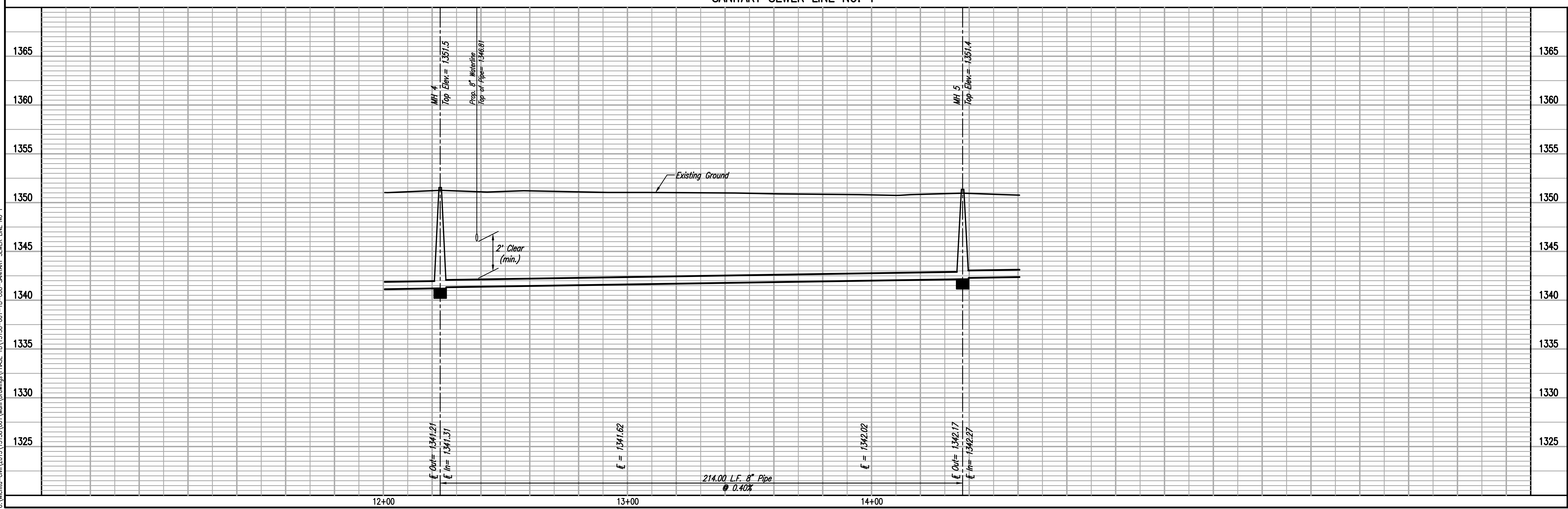
PLAN	CHECKED	BY	DATE
	CHECKED		

PROFILE	CHECKED	BY	DATE
	CHECKED		

Saved: 04-25-2017 1:07:40 PM by CSI
 Plot Scale 1:2500 04-25-2017 1:12:46 PM by CATHY LINK
 U:\Wichita-Civil\2015\15138\001\Mun\Drawings\PHASE 1B\15138-001-1B-C08-SANITARY SEWER LINE NO 1



6000 - SEE SHEET NO. 3 FOR SANITARY SEWER COORDINATES (TYP.)



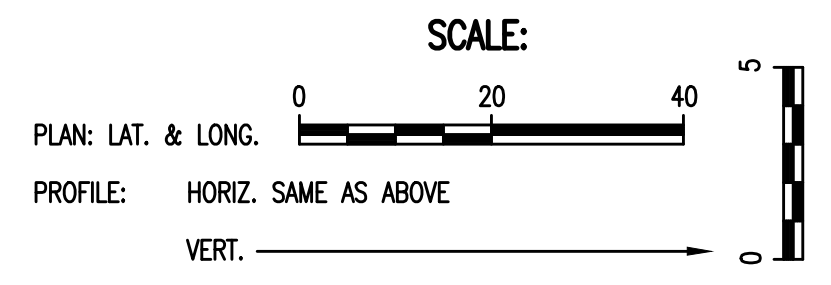
LATERAL 5, MAIN 6 (PHASE 1B)
OF THE NORTHWEST INTERCEPTOR SEWER
SANITARY SEWER LINE NO. 1

GARY JANZEN, P.E. - CITY ENGINEER
CITY OF WICHITA PROJECT NO. 468-85058

PEC
 PROFESSIONAL ENGINEERING CONSULTANTS P.A.
 303 SOUTH TOPEKA WICHITA, KS 67202
 316-262-2691 www.pec1.com

Designed By: CSB, S4D
 Drawn By: CSL

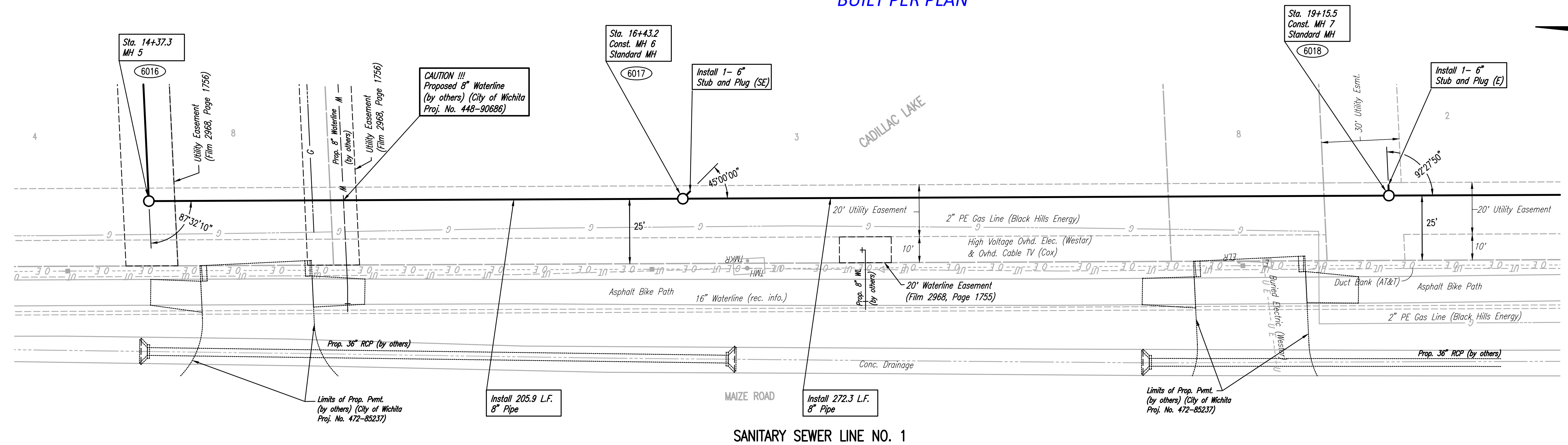
Job No. 35-15138-001-42
 Date: JANUARY 2017



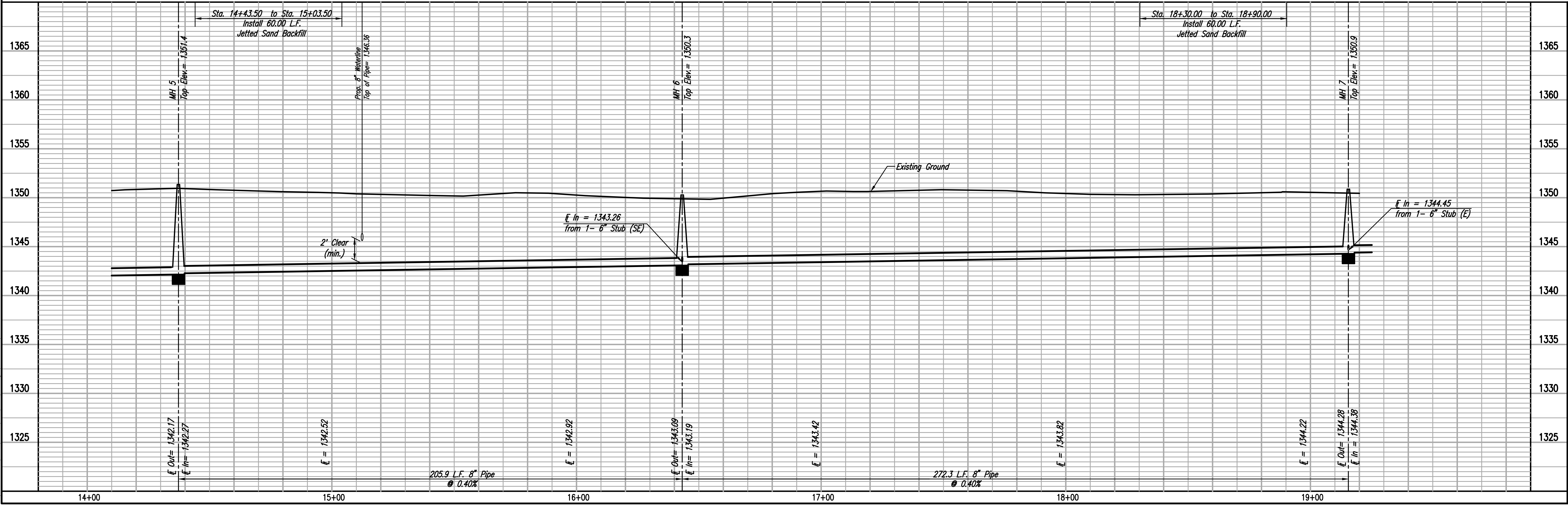
6000 - SEE SHEET NO. 3 FOR SANITARY SEWER COORDINATES (TYP.)

BUILT PER PLAN

PLAN	CHECKED	DATE
	CHECKED	



PROFILE	CHECKED	DATE
	CHECKED	



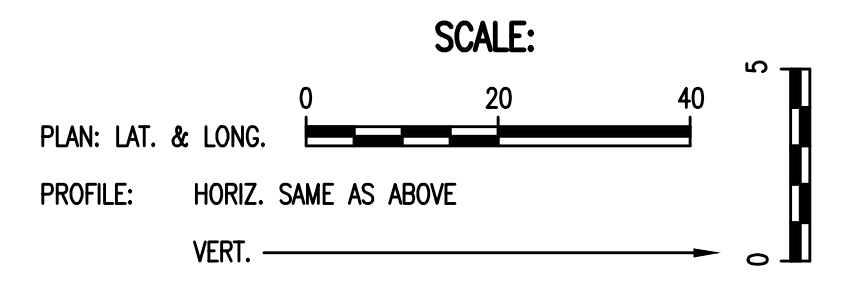
Drawn: 04-25-2017 1:56:54 PM by: CSJ
 Plot: Scale: 1:25000 04-25-2017 1:57:27 PM by: CATHY LINK
 U:\Wichita-Civil\2015\15138\001\Mun\Drawings\PHASE 1B\15138-001-1B-09-SANITARY SEWER LINE NO 1

LATERAL 5, MAIN 6 (PHASE 1B)
 OF THE NORTHWEST INTERCEPTOR SEWER
 SANITARY SEWER LINE NO. 1
 GARY JANZEN, P.E. - CITY ENGINEER
 CITY OF WICHITA PROJECT NO. 468-85058

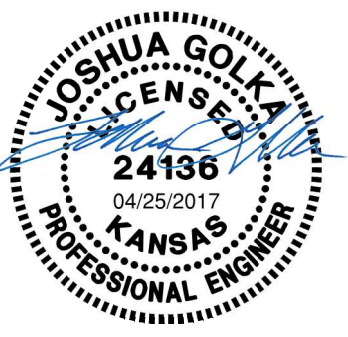
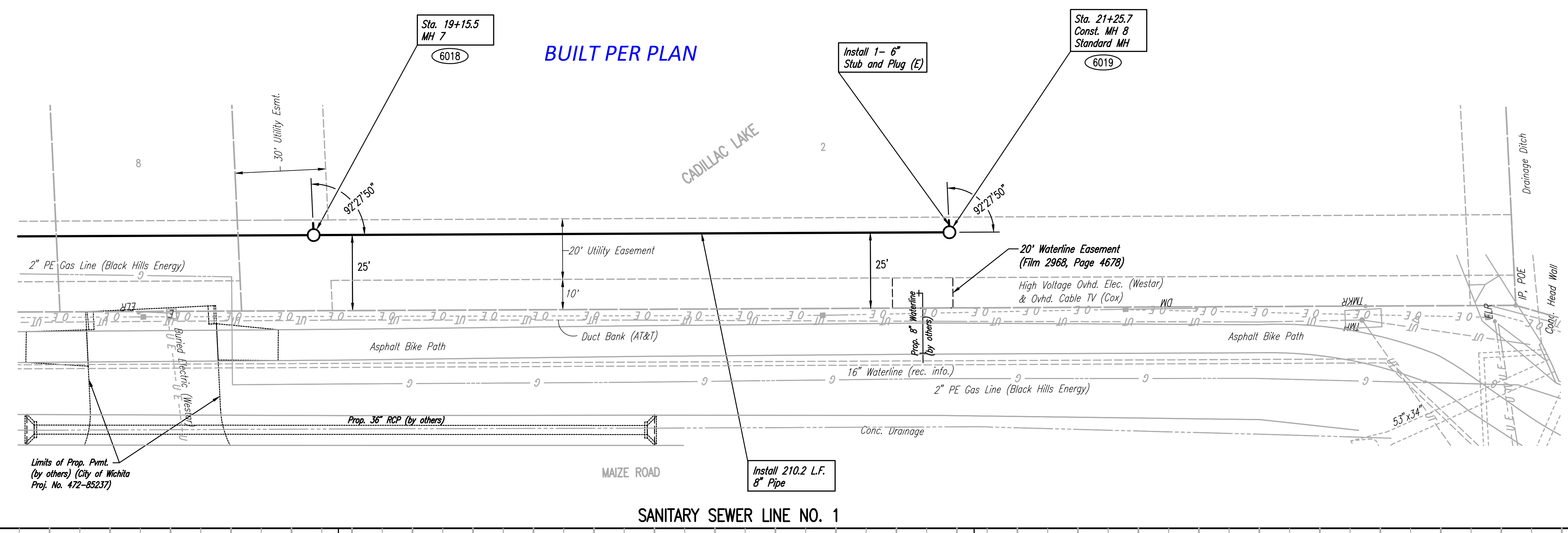
PEC
 PROFESSIONAL ENGINEERING CONSULTANTS P.A.
 303 SOUTH TOPEKA WICHITA, KS 67202
 316-262-2691 www.pec1.com

Job No. 35-15138-001-42
 Date JANUARY 2017

Designed By CSJ, S4D
 Drawn By CSJ



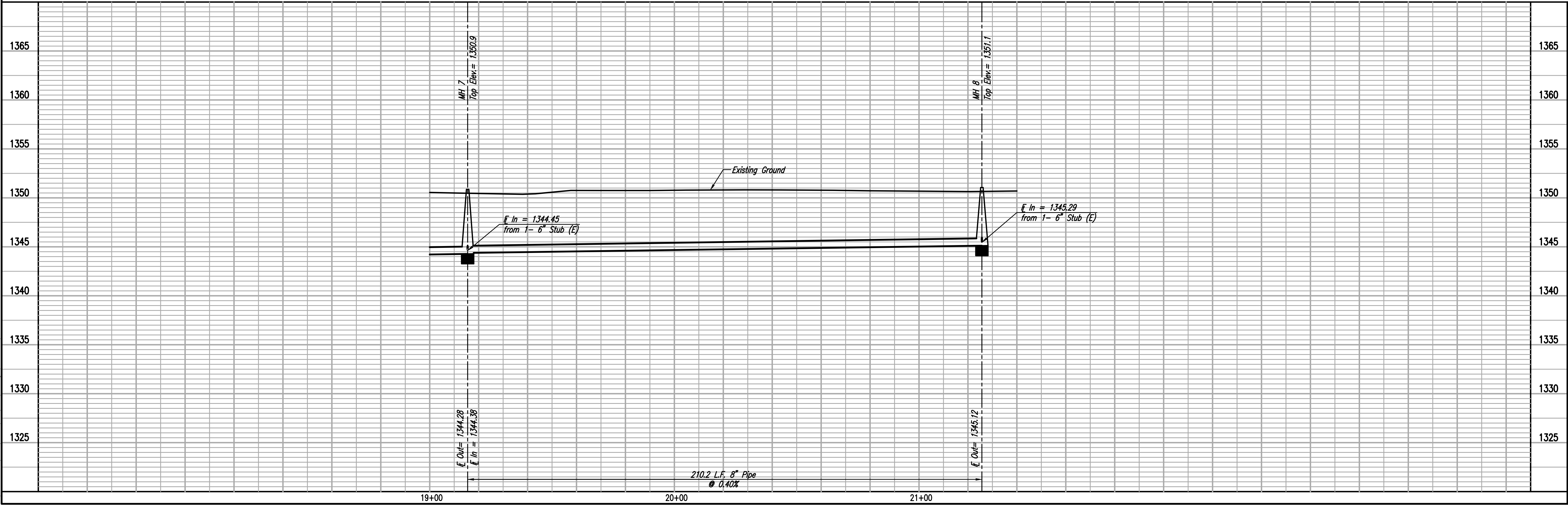
6000 - SEE SHEET NO. 3 FOR SANITARY SEWER COORDINATES (TYP.)



PLAN	CHECKED	DATE
	CHECKED	

PROFILE	CHECKED	DATE
	CHECKED	

Saved: 04-25-2017 1:56:27 PM by CSI
 Plot Scale 1:25000 04-25-2017 1:57:42 PM by CATHY LINK
 U:\Wichita-Civil\2015\15138\001\Mun\Drawings\PHASE 1B\15138-001-1B-C10-SANITARY SEWER LINE NO 1



LATERAL 5, MAIN 6 (PHASE 1B)
 OF THE NORTHWEST INTERCEPTOR SEWER
 SANITARY SEWER LINE NO. 1
 GARY JANZEN, P.E. - CITY ENGINEER
 CITY OF WICHITA PROJECT NO. 468-85058

DESIGNED BY: CSB, S40
 DRAWN BY: CSL

PROFESSIONAL ENGINEERING CONSULTANTS P.A.
 303 SOUTH TOPEKA WICHITA, KS 67202
 316-262-2691 www.pec1.com

Job No. 35-15138-001-42
 Date JANUARY 2017

PEC