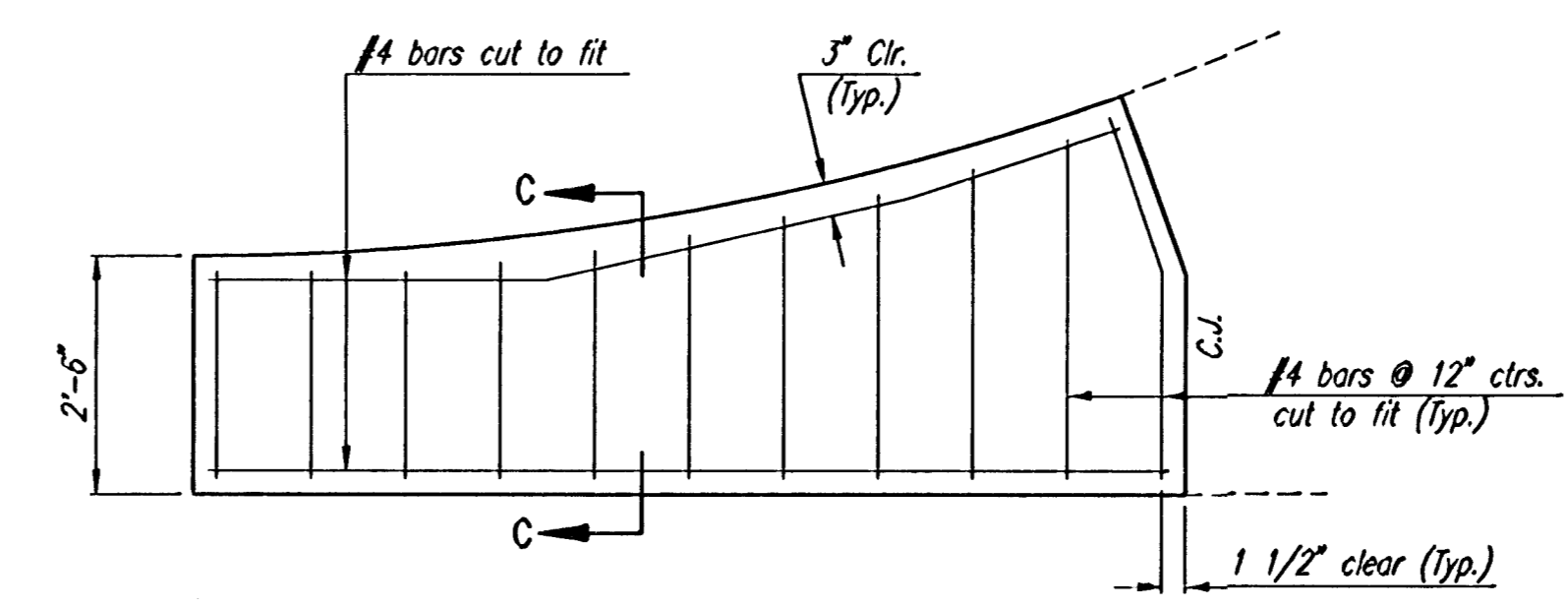
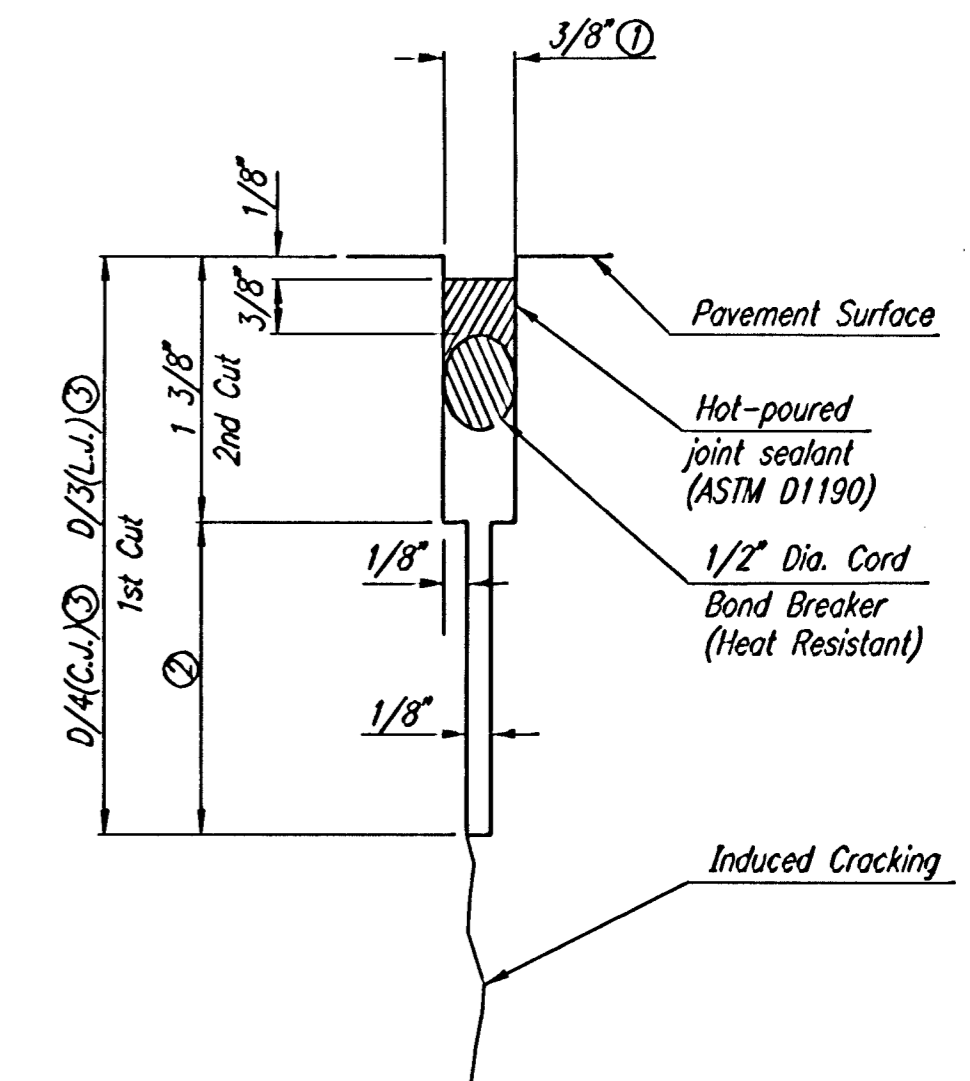


Sheet 10 of 45 - 065 727200 AM BY BJS
 Drawn by BJS, TAT
 Scale 1/4" = 1'-0"
 01/2008/065727200/06572-000-C-VALGUTD1

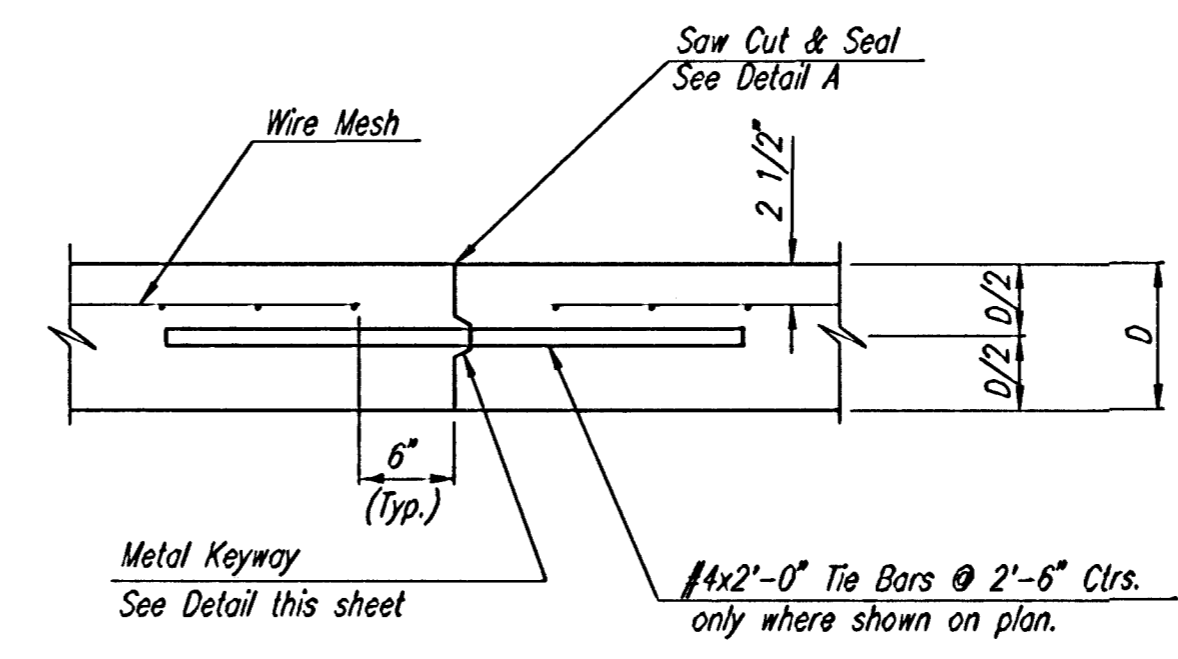


WING REINFORCING DETAIL
 NOTE: OMIT WIRE FABRIC REINFORCING IN THIS SECTION.

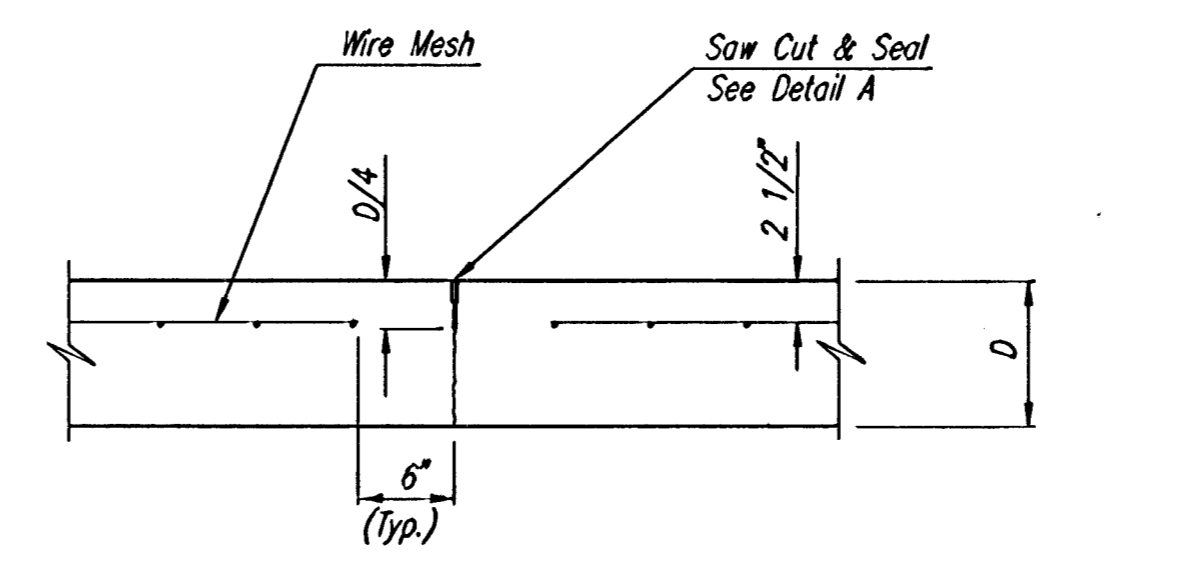


DETAIL A

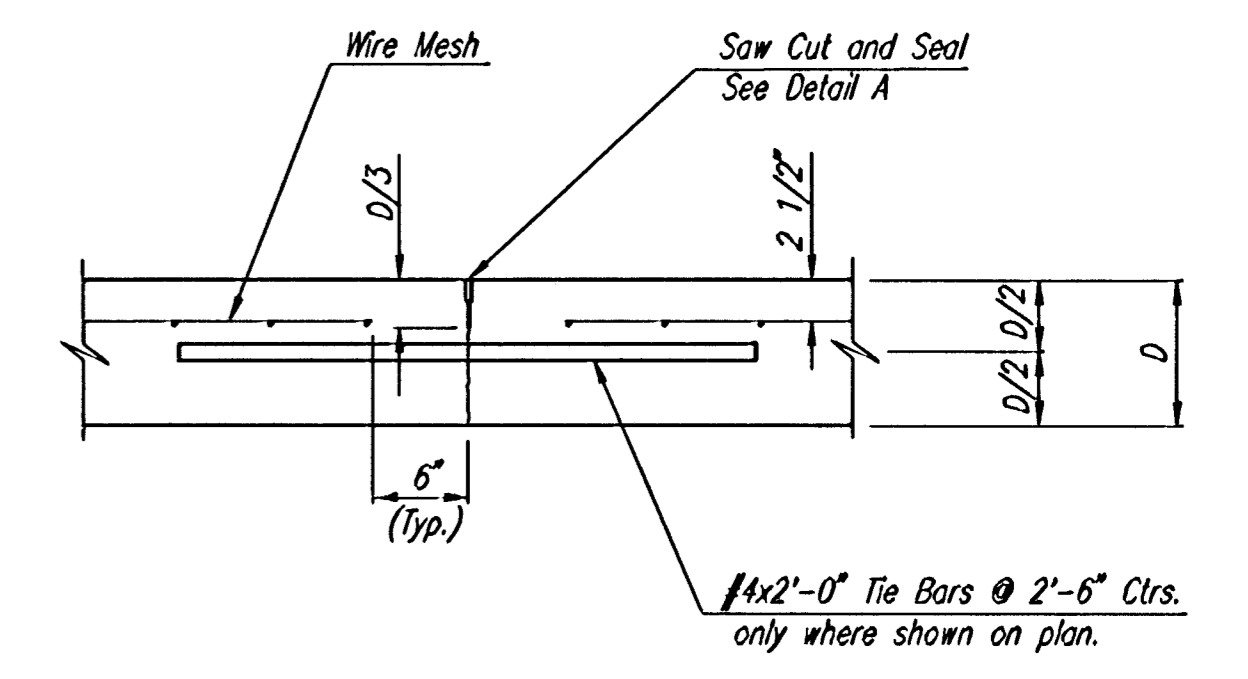
- ① To be accomplished in 2 cuts for Longitudinal Joints and Contraction Joints. Initial cut to be 1/8" wide.
- ② Eliminate bottom of cut when metal keyway is used as part of Longitudinal or Transverse Construction Joint and at Doweled Construction Joint Locations.
- ③ 1 1/2" Minimum



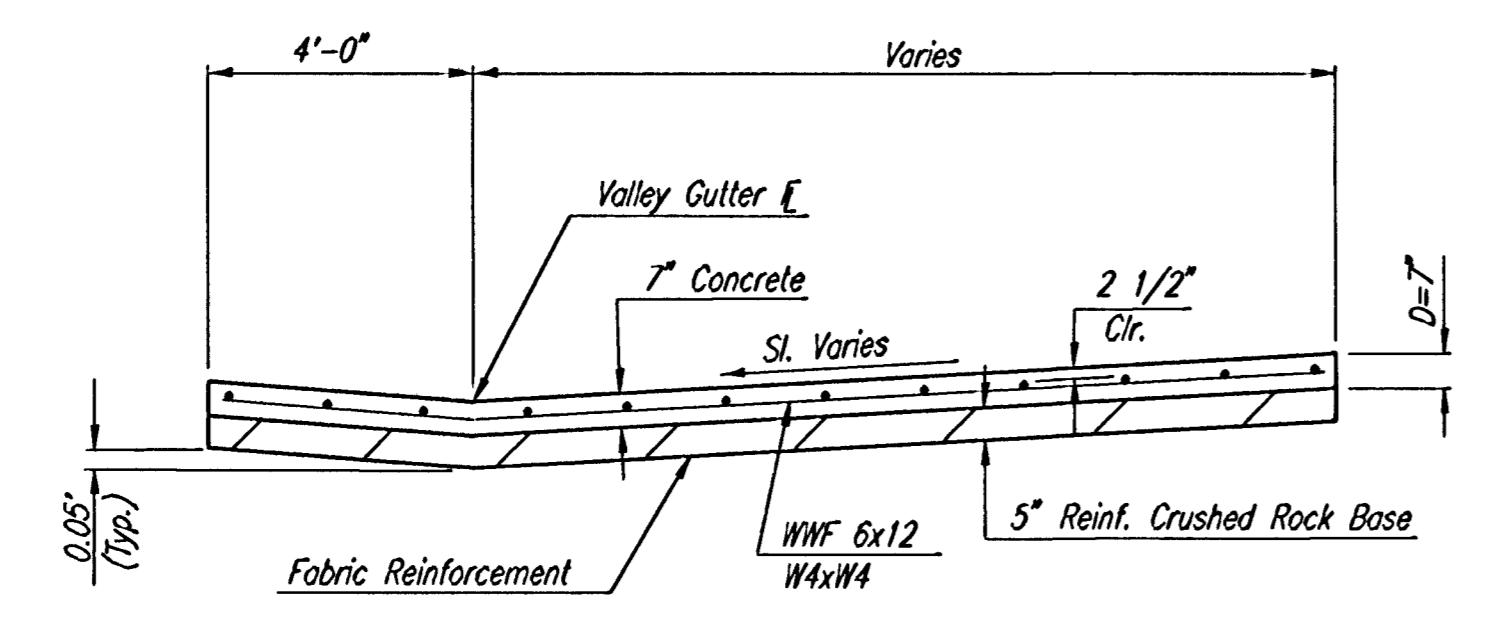
**LONGITUDINAL CONSTRUCTION JOINT DETAIL
 REINFORCED PAVEMENT
 (TRANSVERSE SECTION)
 (ALTERNATE L.J.)**



**CONTRACTION JOINT DETAIL
 REINFORCED PAVEMENT
 (C.J.)**

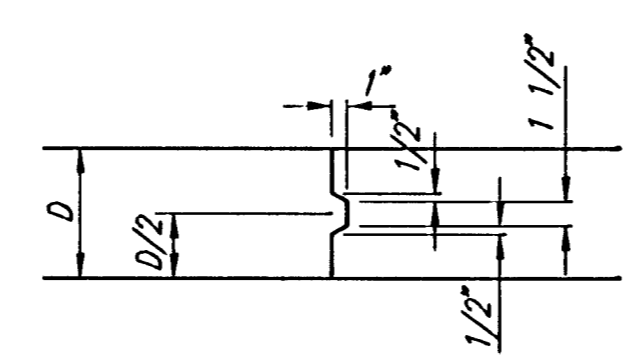


**LONGITUDINAL JOINT DETAIL
 REINFORCED PAVEMENT
 (TRANSVERSE SECTION)
 (L.J.)**

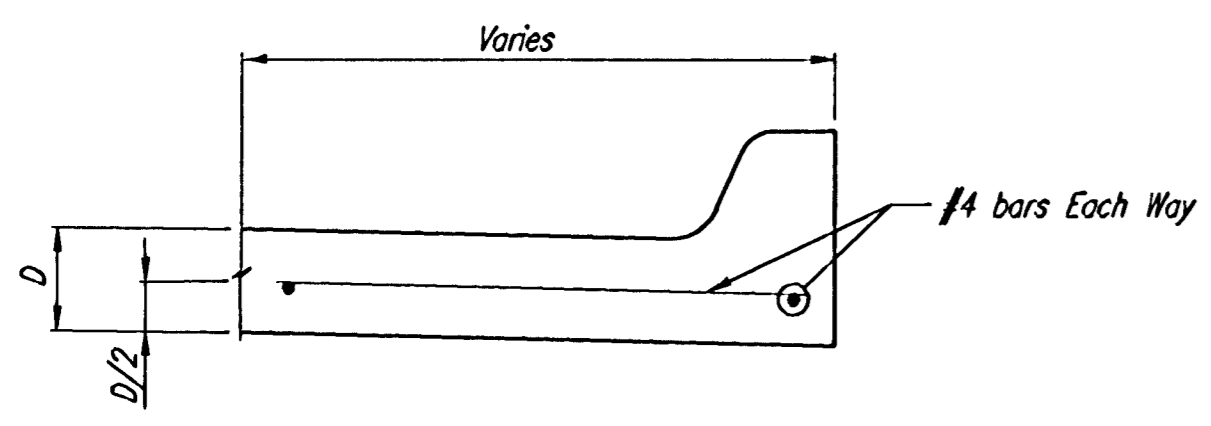


SECTION A-A

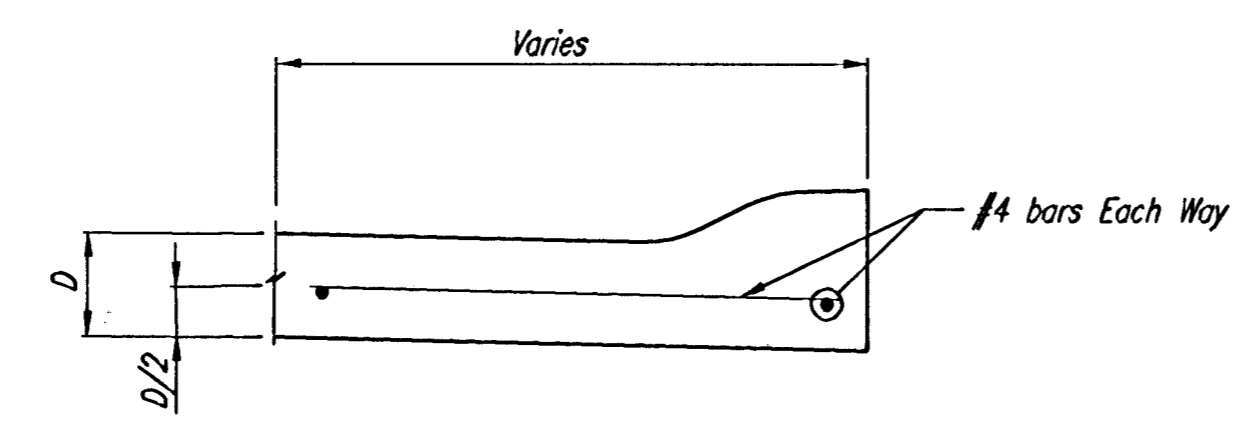
NOTE: OMIT REINFORCING MESH AT ALL JOINTS
 NOTE: ALL CONCRETE VALLEY CUTTER REINFORCEMENT SHALL BE ADEQUATELY SUPPORTED BY BAR CHAIRS IN THE REQUIRED POSITION UNLESS APPROVED OTHERWISE BY THE ENGINEER.



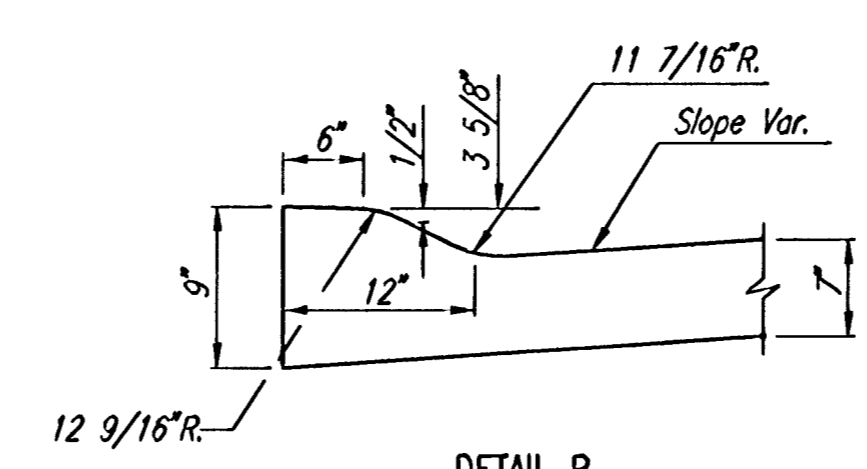
KEYWAY DETAIL



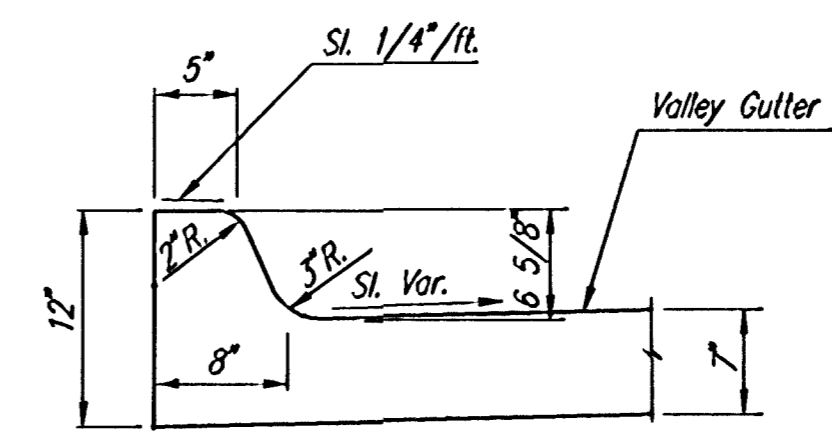
SECTION C-C



**SECTION C-C
 (ROLL-TYPE CURB)**



**DETAIL B
 (ROLL-TYPE CURB)**



**DETAIL A
 (STD.-TYPE CURB)**

No.	Revision	By	Date
OAK CREEK 3RD			
VALLEY GUTTER DETAILS			
Professional Engineering Consultants, P.A. 303 S. TOPEKA • WICHITA, KANSAS 67202 316-262-2691 • FAX 316-262-3003			
Designed by	BDB, BMM	Job No.	35-06572-000
Drawn by	BJS, TAT	Date	February 2006
			Sheet 13 of 45