

J:\PROJECTS\2018\1601010221 - PERFECTION, AUBURN LAKES - 16221 CAD\SHIT\505 CIVIL\GROUP\PART B\16221-05-1206.DWG
 PLOTTED: Monday, November 12, 2018 @ 05:15PM

NATIVE GRASS & WILDFLOWER INSTALLATION

SEEDBED PREPARATION:
 1. ONCE TOPSOIL HAS BEEN PLACED, DISC/SCARIFY SOIL PRIOR TO SEEDING UNLESS SEEDING INTO INTENTIONALLY PLANTED COVER CROP.

2. IT IS INTENDED A COVER CROP BE PLANTED IN ALL DISTURBED AREAS WHEN THE CALENDAR IS OUTSIDE OF THE NATIVE SEEDING DATES. THIS INCLUDES ALL NATIVE SEEDING AREAS (COST FOR COVER CROP WITHIN NATIVE SEEDING AREAS SHALL BE SUBSIDIARY TO NATIVE SEED ITEMS). REFER TO EROSION CONTROL & SEEDING PLAN NOTES.

SEEDING METHOD:
 3. SEED PLACEMENT IS IMPORTANT AND SHOULD BE PLANTED NO MORE THAN 1/4" DEEP. TO ENSURE ACCURATE PLACEMENT OF SEED IT IS PREFERRED THAT SEED IS PLACED WITH A 'SEED DRILL' OR 'NO-TILL DRILL'. WHEN THIS METHOD IS NOT PRACTICAL THE SEED BED CAN BE PREPARED WITH A CULTIPACKER THEN BROADCAST SEED AND ROLL AGAIN. NOTE: A CULTIPACKER IS A SEGMENTED ROLLER THAT PREPARES THE SEEDBED THEN SLIGHTLY COMPACT THE SOIL AFTER SEEDING.

SEEDING RATES:
 4. ALL SEED SHOULD BE PLACED AT A UNIFORM RATE OVER THE DELINEATED AREA AT THE SPECIFIED SEEDING RATE ACCORDING TO THE DIRECTIONS OF THE SEED SUPPLIER (A.E.S. OR APPROVED EQUAL).

SEEDING DATES:
 5. PLANT SEED BETWEEN MARCH 25TH AND APRIL 10TH (PREFERRED) BETWEEN FEBRUARY 15TH AND MAY 1ST (ACCEPTABLE); OR AS APPROVED BY THE LANDSCAPE ARCHITECT THROUGH COORDINATION WITH THE CONTRACTOR.

FERTILIZING:
 6. GENERALLY FERTILIZING IS NOT REQUIRED OR RECOMMENDED FOR NATIVE GRASS OR WILDFLOWER ESTABLISHMENT AS IT WOULD PROMOTE WEED GROWTH. IN THIS INSTANCE HOWEVER, ALL WEEDS SHOULD BE KILLED PRIOR TO PLANTING. THE ONE TIME APPLICATION OF A GRANULAR FERTILIZER IS RECOMMENDED DURING ESTABLISHMENT.

WATERING (BY OTHERS):
 7. DURING THE ESTABLISHMENT PHASE, SUPPLEMENTAL WATERING (ONCE A WEEK) FOR 4 TO 6 WEEKS MAY BE REQUIRED TO ENSURE SEED GERMINATION; THEN GRADUALLY REDUCE WATERING. A TEMPORARY IRRIGATION SYSTEM SHALL BE UTILIZED FOR INITIAL PLANT ESTABLISHMENT IF NECESSARY. ADDITIONAL WATERING WILL BE REQUIRED DURING TIMES OF PROLONGED DRY WEATHER IN THE FIRST 2 - 3 GROWING SEASONS.

MANAGEMENT DURING ESTABLISHMENT (BY OTHERS):
 8. WEED CONTROL IS NECESSARY IN NEW SEEDING TO REDUCE COMPETITION FOR MOISTURE, NUTRIENTS AND SUNLIGHT. HERBICIDES ARE NOT RECOMMENDED, AS THEY WILL HARM THE WILDFLOWER STAND. IF NECESSARY, HERBICIDES MAY BE APPLIED USING A WICK APPLICATOR. MOWING DURING THE FIRST YEAR OF ESTABLISHMENT IS THE MOST APPROPRIATE METHOD TO REDUCE WEED POPULATIONS. MOWING MUST TAKE PLACE BEFORE THE WEEDY PLANTS PRODUCE SEED. WEEDS SHALL BE MOWED BEFORE THEY ARE 6" TALL; AS MUCH OF THE WEED SHOULD BE CUT AS POSSIBLE WITHOUT REMOVING TOO MUCH OF THE NEW GROWTH OF NATIVE GRASSES.

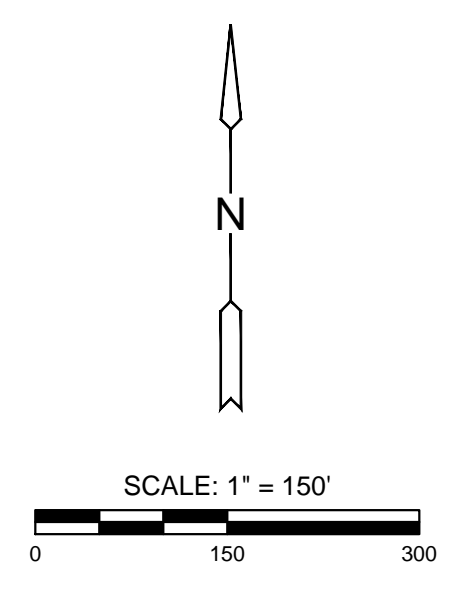
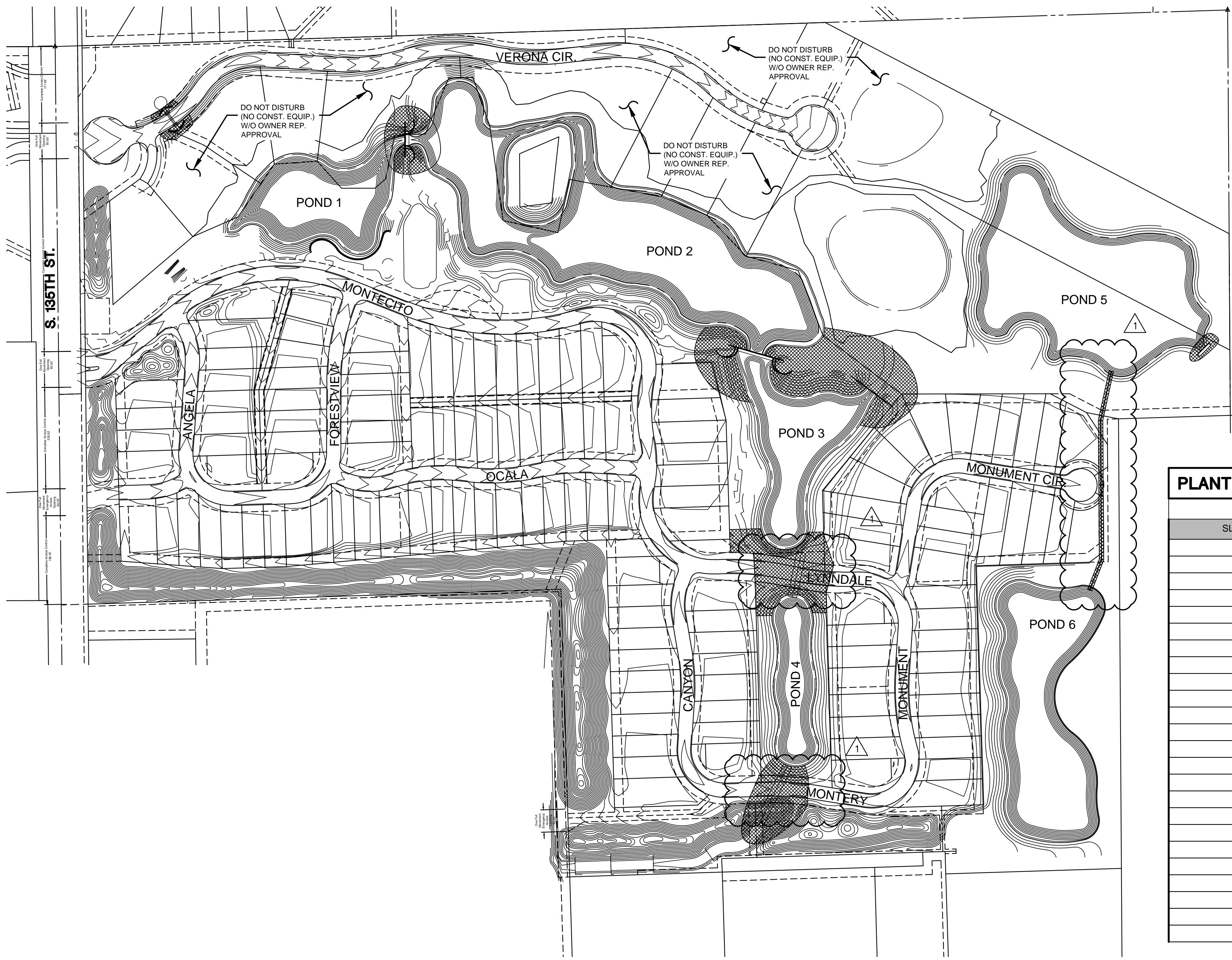
TRASH AND DEBRIS REMOVAL:
 9. THE BMP AREA SHOULD BE INSPECTED FOLLOWING MAJOR STORMS AND ON A REGULAR MONTHLY SCHEDULE. ANY TRASH OR DEBRIS SHOULD BE REMOVED AS SOON AS IT IS FOUND TO PREVENT PLANTS FROM BEING SMOTHERED. REGULARLY REMOVING TRASH AND DEBRIS WILL MAINTAIN AESTHETICS OF THE FEATURE. ALL TRASH AND DEBRIS SHOULD BE DISPOSED OF PROPERLY.

VEGETATION (BY OTHERS):
 10. REVIEW AND INSPECT VEGETATION WITHIN THE PLANTING AREA ON A MONTHLY BASIS DURING THE SPRING AND SUMMER MONTHS. INSPECTION SHOULD BE PERFORMED TO DETERMINE HEALTH AND TO IDENTIFY WEEDS AND INVASIVE SPECIES. INSPECTIONS SHOULD BE PERFORMED BY A PERSON TRAINED IN PLANT IDENTIFICATION AND CHARACTERISTICS. VEGETATION SHOULD ONLY INCLUDE PLANT SPECIES AS IDENTIFIED IN THE SEED MIX SPECIFIED. ALL OTHER PLANT SPECIES NOT IDENTIFIED IN SEED MIX ARE TO BE REMOVED DURING MAINTENANCE.

FALL AND WINTER MANAGEMENT (BY OTHERS):
 11. SEEDED AREAS SHOULD BE MOWED FOLLOWING A HARD FREEZE AND AFTER PLANTS HAVE ESTABLISHED SEEDS. IF MOWING IS USED IT SHOULD BE A TWO STEP PROCESS. MOW SITE AND THEN REMOVE TOP GROWTH. TOP GROWTH MAY BE REMOVED BY RAKING, BALING OR MOWING WITH A BAGGER BUT A LAWN VACUUM SHOULD NOT BE USED.

SATISFACTORY NATIVE STAND:
 12. WITHIN ONE FULL GROWING SEASON AND AT THE END OF THE MAINTENANCE PERIOD, A HEALTHY, WELL-ROOTED, VIABLE NATIVE STAND SHALL BE ESTABLISHED, FREE OF BARE AREAS GREATER THAN TWO SQUARE FEET IN SIZE AND FREE OF BROADER AREAS FAILING TO ACHIEVE 85% DESIRABLE PLANT COVERAGE.

13. REESTABLISH NATIVE STANDS THAT DO NOT COMPLY WITH REQUIREMENTS AND CONTINUE MAINTENANCE UNTIL NATIVE STANDS ARE SATISFACTORY.



LANDSCAPE LEGEND

SLOPE MIX

NOTES

- ALL QUANTITIES ARE FOR REFERENCE ONLY AND ARE APPROXIMATE.
- CONTRACTOR SHALL LIMIT DISTURBANCE BEYOND GRADING LIMITS.
- ALL DISTURBED AREAS SHALL BE SEEDED & MULCHED.

PLANT MATERIAL LIST

COMMON NAME	BOTANICAL NAME
SLOPE MIX (BERM & SLOPE MIX AREA) (20 LBS./ PLS/ AC)	
BUTTERFLY MILKWEED	ASCLEPIAS TUBEROSA
SIDE OATS GRAMMA	BOUTELOUA CUTIPENDULA
BLUE GRAMMA RASS	BOUTELOUA GRACILIS
BUFFALO GRASS	BUCHLOE DATYLOIDES
PURPLE POPPY MALLOW	CALLIRHOE INVOLUCRATA
SAND COREOPSIS	COREOPSIS LANCEOLATA
PLAINS COREOPSIS	COREOPSIS TINCTORA
PURPLE PRAIRIE CLOVER	DALEA PURPUREA
PALE PURPLE CONEFLOWER	ECHINACEA PALLID
CANADA WILD RYE	ELYMUS CANADENSIS
RATTLESNAKE MASTER	ERYNGIUM YUCCIFOLIUM
JUNE GRASS	KOELERIA MACRANTHA
ROUGH BLAZING STAR	LIATRIS ASPERA
DOTTED GAYFEATHER	LIATRIS PUNCTATA
SWITCHGRASS	PANICUM VIRGATUM
BEARDTONGUE	PENSTEMON DIGITALIS
UPRIGHT CONEFLOWER	RATIBA COLUMNIFERA
BLACK EYED SUSAN	RUDBECKIA HIRTA
BLUE SAGE	SALVIA AZURA
LITTLE BLUESTEM	SCHIZACYRIUM SCOPARIUM
PRAIRIE DROPSEED	SPOROBOLUS HETEROLEPSIS
OHIO SPIDERWORT	TRADESCANTIA OHIENSIS
INDIANGRASS	SORGHASTRUM NUTANS
SAND LOVEGRASS	ERAGOSTIS TRICHODES



GRADING PLANS FOR AUBURN LAKES ADDITION PART B

©2018
 MKEC Engineering
 All Rights Reserved
 www.mkec.com
 These drawings and their contents, including, but not limited to, all concepts, designs, & ideas are the exclusive property of MKEC Engineering (MKEC), and may not be used or reproduced in any way without the express consent of MKEC.

SEEDING PLAN

PROJECT NO.	468-85308
DATE	OCT. 2018
SCALE	1" = 150'
DESIGNED	DML
DRAWN	DML
CHECKED	JAG
1	ADDENDUM #1
NO.	REVISION
	DATE

SHEET NO.
 20 OF 32

INSTALL ADDITIONAL STOCKS 'PIONEER WILDFLOWER MIX' 10 PLS (pure live seed)/ LBS./ AC. IN ALL SLOPE MIX AND DESIGNATED AREAS. COST SUBSIDIARY TO SLOPE MIX.
 * MIX IS AVAILABLE THROUGH STOCKS SEED FARMS, MURDOCK, NE 1-800-759-1520