

SUB2017-00050 Auburn Lakes Addition

# FINAL PLAT

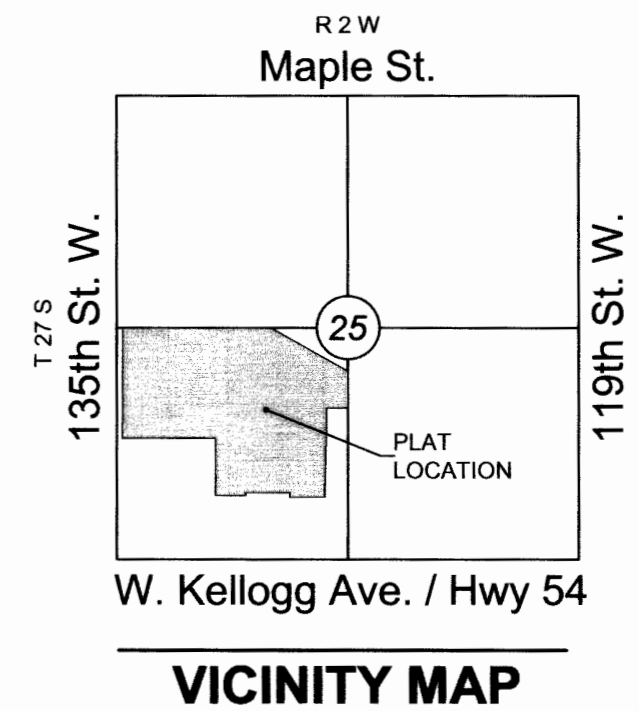
## AUBURN LAKES ADDITION

### AN ADDITION TO WICHITA, SEDGWICK COUNTY, KANSAS

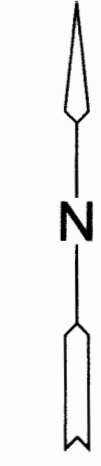
lying within in a portion of the Southwest Quarter of Section 25,  
Township 27 South, Range 2 West of the 6th Principal Meridian

NW cor., SW ¼, Sec. 25,  
T27S, R2W, 6th P.M.  
Fnd. 1" Iron Pipe in Thimble

NE cor., SW ¼, Sec. 25,  
T27S, R2W, 6th P.M.  
Fnd. Stone



**VICINITY MAP**



SCALE: 1" = 150'

0 150 300  
Basis of Bearings: Kansas coordinate system of 1983  
south zone bearing of S88°11'57"W on the south line  
of the Southwest Quarter, Section 25, Township 27  
South, Range 2 West of the 6th Principal Meridian.  
This plat is surveyed and platted on NAD83 using  
Kansas state plane south zone coordinates, modified  
to the surface, having a combined adjustment scale  
factor of 1.000120014401728

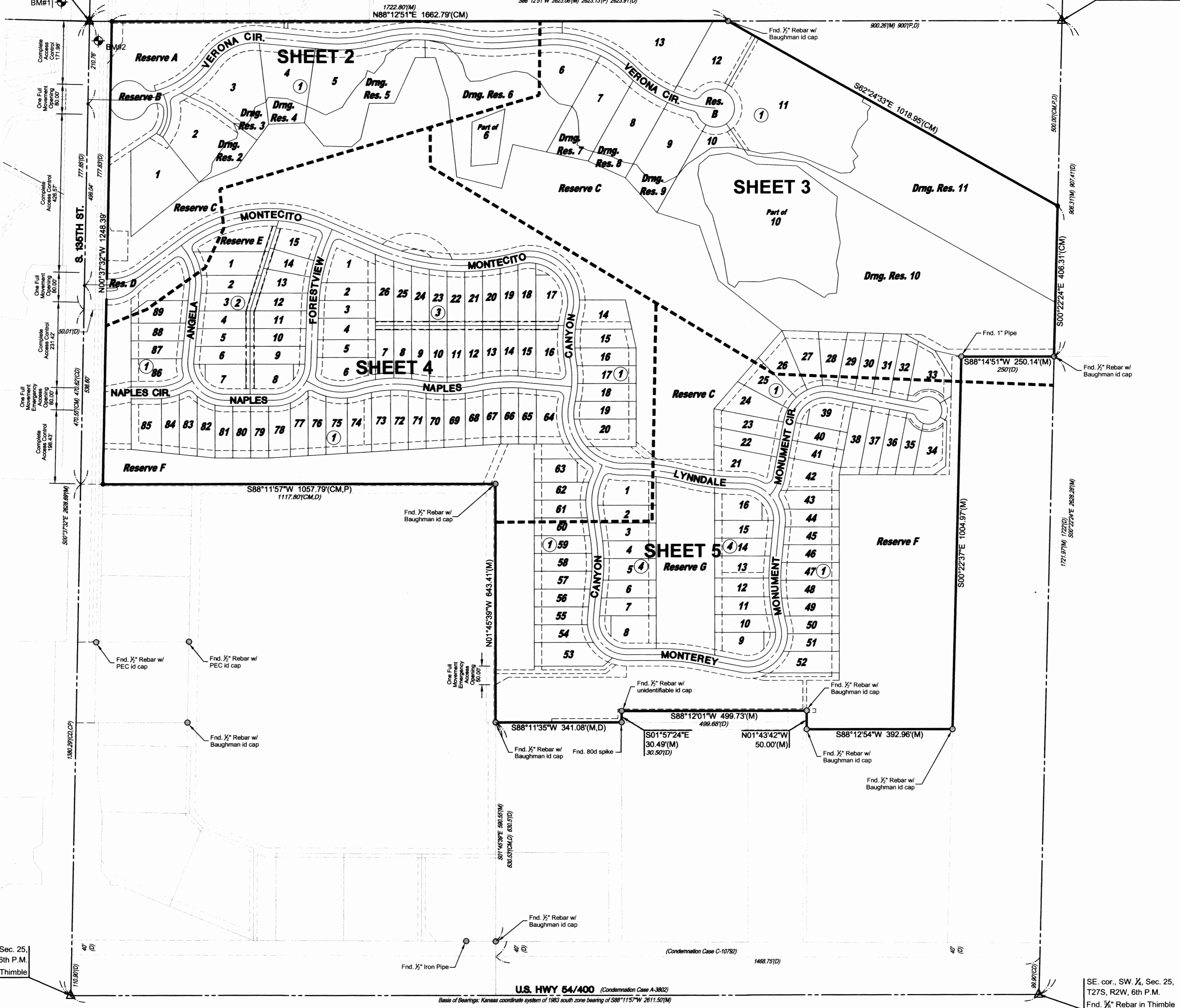
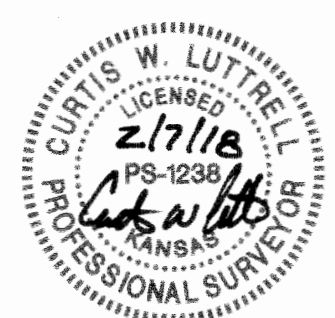
**LEGEND**

- Date of Survey: 9/17/17
- △ = Section Corner Monument Found
  - = Found monument (see annotation for type)
  - = Set 3/8" rebar w/ MKEC CLS 39 id. cap
  - ⊕ = Benchmark
  - (M) = Measured
  - (P) = Platted
  - (D) = Described
  - (CM) = Calculated from Measurement
  - (CP) = Calculated from Plat
  - (CD) = Calculated from Described
  - Drng. = Drainage
  - Util. = Utility
  - Sdwk. = Sidewalk
  - St. = Street
  - Esmt. = Easement
  - 1 = Lot
  - ① = Block

**BENCHMARKS**

- BM#1 Square Cut on east nose of center island, 50 feet west of 135th Street West and Onewood Street intersection.  
Elev.=1350.35 NAVD88
- BM#2 Square Cut on northeast corner curb inlet, east side of 135th Street West, 33 feet south of NW ¼, Sec. 25, T27S, R2W of the 6th P.M.  
Elev.=1346.29 NAVD88

MINIMUM PAD ELEVATIONS LOWEST OPENINGS		
LOT(S) inclusive	BLOCK	ELEVATION NAVD 88
1	1	1342.5
2	1	1339.5
3-5	1	1337.2
6-9	1	1333.2
10	1	1328.0
11	1	1326.5
14	1	1330.2
15-28	1	1327.9
29	1	1327.5
30	1	1327.0
31-38	1	1326.6
41-43	1	1326.6
44-47	1	1326.7
48-52	1	1326.8
53	1	1331.5
89	1	1342.5
1	2	1341.0
15	2	1337.2
1	3	1337.2
17-26	3	1333.2
1-16	4	1329.2



SW cor., SW ¼, Sec. 25,  
T27S, R2W, 6th P.M.  
Fnd. 3/8" Iron Pipe in Thimble

SE cor., SW ¼, Sec. 25,  
T27S, R2W, 6th P.M.  
Fnd. 3/8" Rebar in Thimble

U.S. HWY 54/400 (Condemnation Case A-3802)  
Basis of Bearings: Kansas coordinate system of 1983 south zone bearing of S88°11'57"W 2611.50(M)



SUB2017-00050 Auburn Lakes Addition