

SUB2017-00050 Auburn Lakes Addition

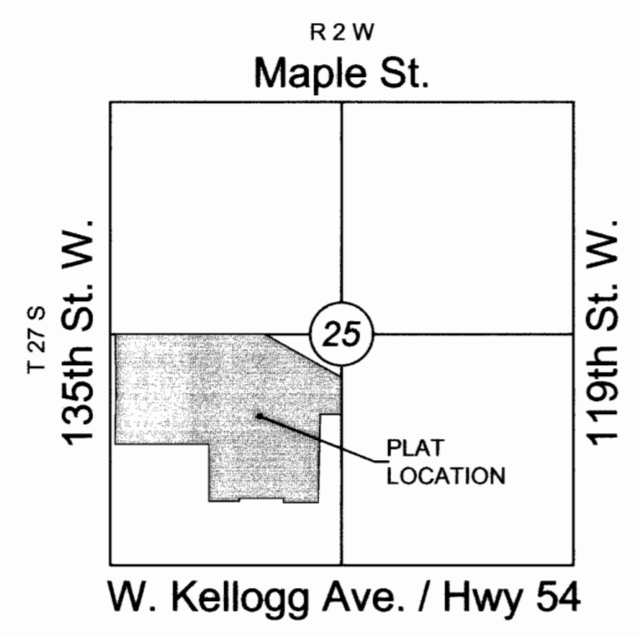
# FINAL PLAT

## AUBURN LAKES ADDITION

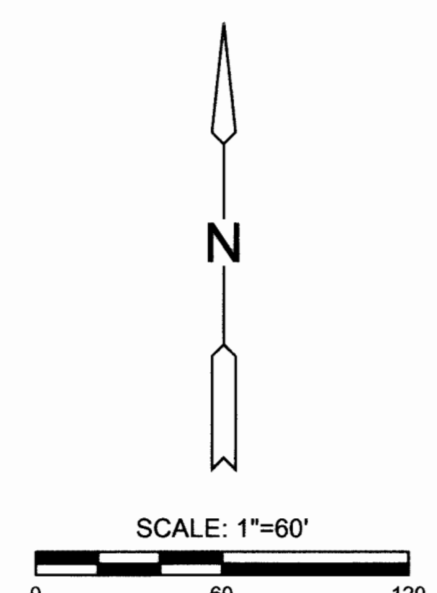
AN ADDITION TO WICHITA, SEDGWICK COUNTY, KANSAS

lying within in a portion of the Southwest Quarter of Section 25,  
Township 27 South, Range 2 West of the 6th Principal Meridian

NE cor., SW 1/4, Sec. 25,  
T27S, R2W, 6th P.M.  
Fnd. Stone



**VICINITY MAP**



Basis of Bearings: Kansas coordinate system of 1983 south zone bearing of S88°11'57"W on the south line of the Southwest Quarter, Section 25, Township 27 South, Range 2 West of the 6th Principal Meridian.  
This plat is surveyed and platted on NAD83 using Kansas state plane south zone coordinates, modified to the surface, having a combined adjustment scale factor of 1.000120014401728

**LEGEND**

- Date of Survey: 9/17/17
- △ = Section Corner Monument Found
  - = Found monument (see annotation for type)
  - = Set 3/4" rebar w/ MKEC CLS 39 id. cap
  - ◆ = Benchmark
  - (M) = Measured
  - (P) = Platted
  - (D) = Described
  - (CM) = Calculated from Measurement
  - (CP) = Calculated from Plat
  - (CD) = Calculated from Described
  - Dmg. = Drainage
  - Util. = Utility
  - Sdwk. = Sidewalk
  - St. = Street
  - Esmt. = Easement
  - ① = Lot
  - ② = Block

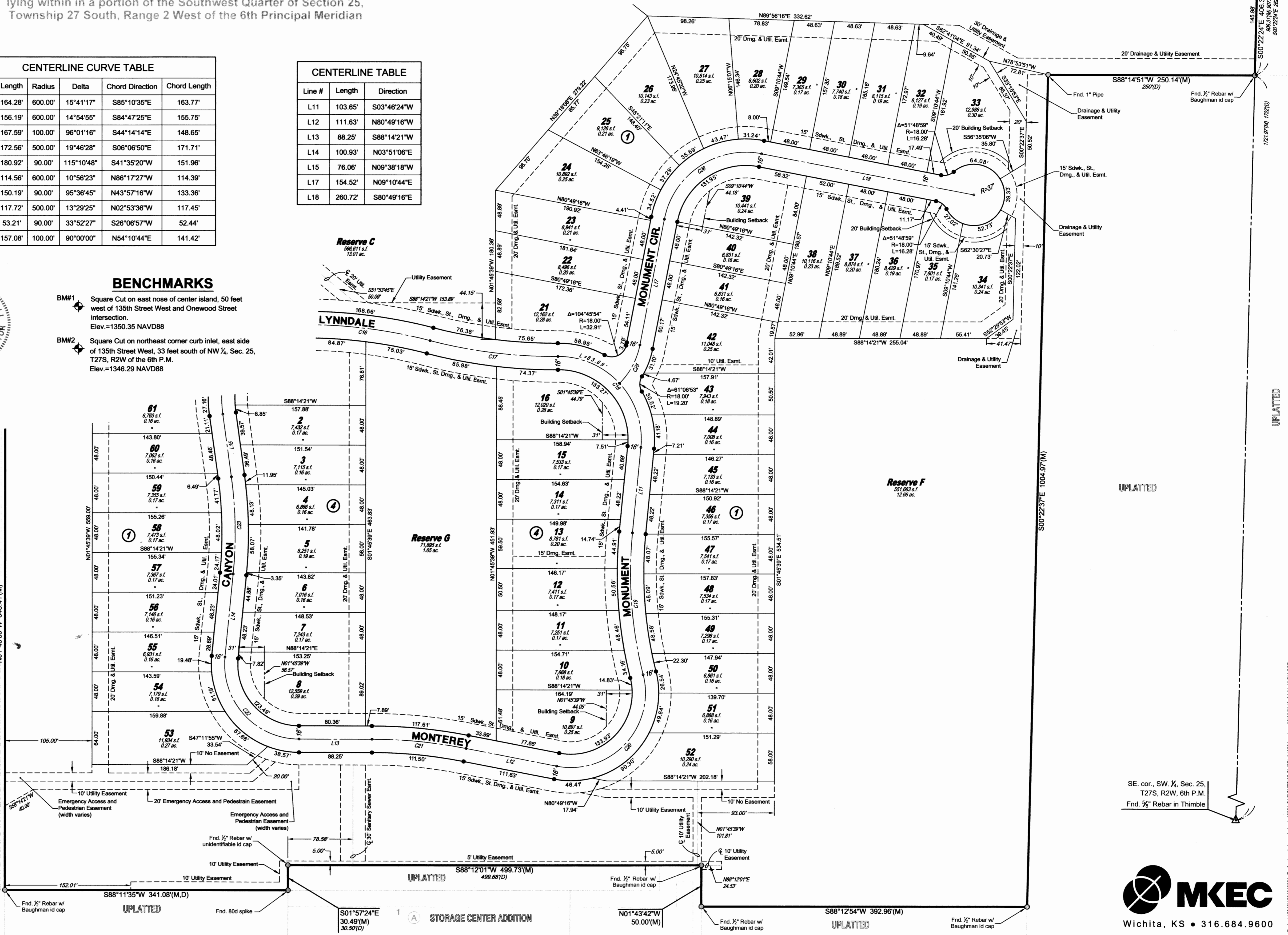
MINIMUM PAD ELEVATIONS LOWEST OPENINGS		
LOT(S) inclusive	BLOCK	ELEVATION NAVD 88
21-28	1	1327.9
29	1	1327.5
30	1	1327.0
31-38	1	1326.6
41-43	1	1326.6
44-47	1	1326.7
48-52	1	1326.8
53	1	1331.5
2-16	4	1329.2

CENTERLINE CURVE TABLE					
Curve #	Length	Radius	Delta	Chord Direction	Chord Length
C16	164.28'	600.00'	15°41'17"	S85°10'35"E	163.77'
C17	156.19'	600.00'	14°54'55"	S84°47'25"E	155.75'
C18	167.59'	100.00'	96°01'16"	S44°14'14"E	148.65'
C19	172.56'	500.00'	19°46'28"	S06°06'50"E	171.71'
C20	180.92'	90.00'	115°10'48"	S41°35'20"W	151.96'
C21	114.56'	600.00'	10°56'23"	N86°17'27"W	114.39'
C22	150.19'	90.00'	95°36'45"	N43°57'16"W	133.36'
C23	117.72'	500.00'	13°29'25"	N02°53'36"W	117.45'
C25	53.21'	90.00'	33°52'27"	S26°06'57"W	52.44'
C26	157.08'	100.00'	90°00'00"	N54°10'44"E	141.42'

CENTERLINE TABLE		
Line #	Length	Direction
L11	103.65'	S03°46'24"W
L12	111.63'	N80°49'16"W
L13	88.25'	S88°14'21"W
L14	100.93'	N03°51'06"E
L15	76.06'	N09°38'18"W
L17	154.52'	N09°10'44"E
L18	260.72'	S80°49'16"E

**BENCHMARKS**

- BM#1 Square Cut on east nose of center island, 50 feet west of 135th Street West and Onewood Street intersection.  
Elev.=1350.35 NAVD88
- BM#2 Square Cut on northeast corner curb inlet, east side of 135th Street West, 33 feet south of NW 1/4, Sec. 25, T27S, R2W of the 6th P.M.  
Elev.=1346.29 NAVD88



SE. cor., SW 1/4, Sec. 25,  
T27S, R2W, 6th P.M.  
Fnd. 3/4" Rebar in Thimble

