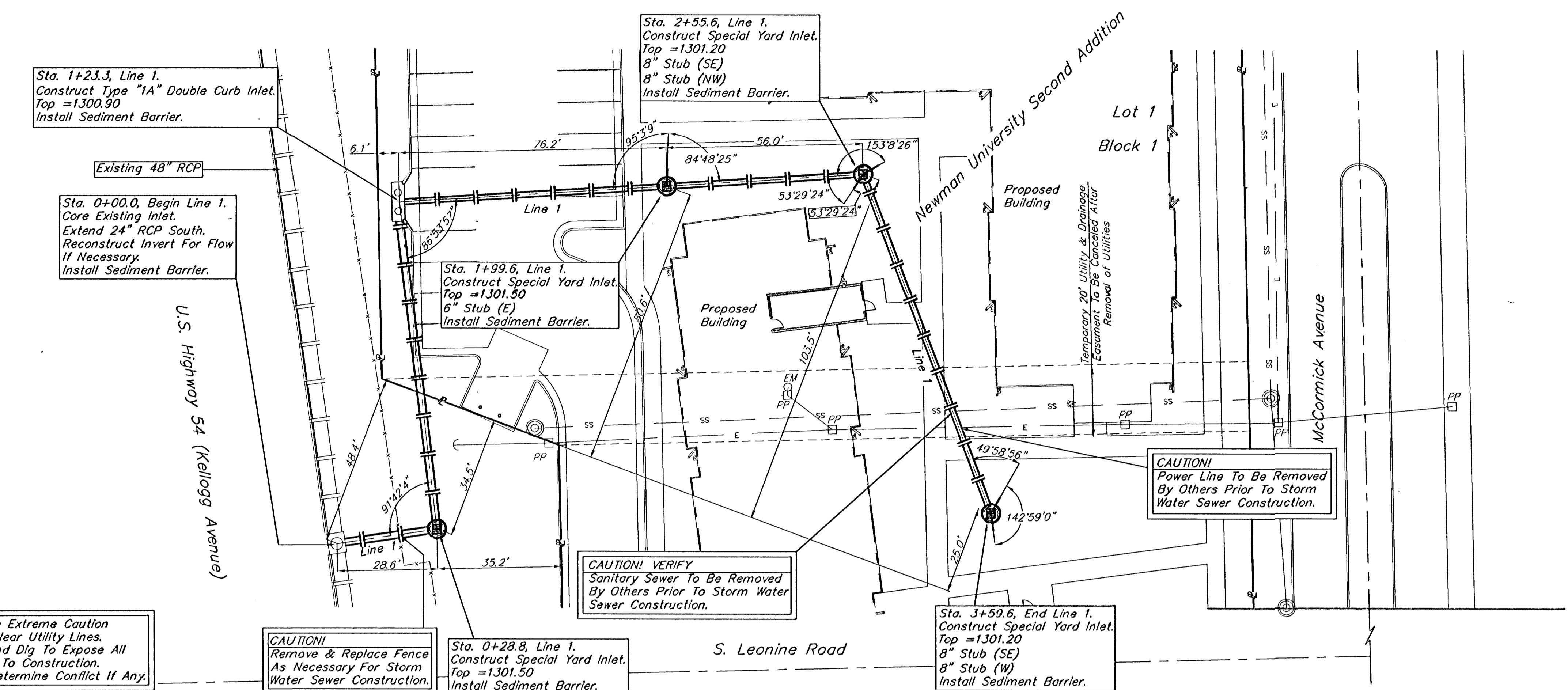


Bench Marks:

1. Site Bench Mark—
"□" Chiseled on top of curb.
22.00 ft. North of & of McCormick.
27.75 ft. East of & of Leonine
Elev. = 1299.92 (NGVD 29)
2. Site Bench Mark—
Railroad Spike in power pole.
28.48 ft. North of & of McCormick.
174.87 ft. West of & of Leonine
Elev. = 1300.78 (NGVD 29)

SCALE:
1" = 20' HORIZONTAL
1" = 5' VERTICAL

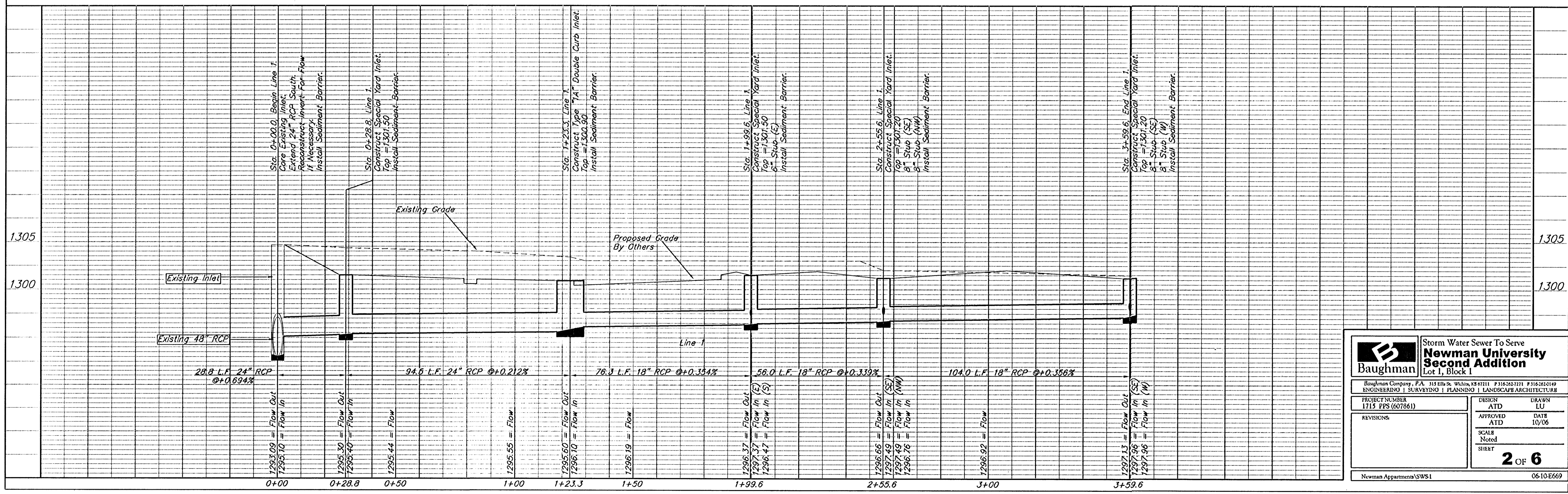


Contractor To Use Extreme Caution When Excavating Near Utility Lines. Contractor To Hand Dig To Expose All Utility Lines Prior To Construction. Verify Depth To Determine Conflict If Any.

CAUTION! Remove & Replace Fence As Necessary For Storm Water Sewer Construction.

CAUTION! VERIFY Sanitary Sewer To Be Removed By Others Prior To Storm Water Sewer Construction.

CAUTION! Power Line To Be Removed By Others Prior To Storm Water Sewer Construction.



Baughman		Storm Water Sewer To Serve Newman University Second Addition Lot 1, Block 1	
Baughman Company, P.A. 315 Ellis St. Wichita, KS 67211 P 316-262-7711 F 316-262-0149 ENGINEERING SURVEYING PLANNING LANDSCAPE ARCHITECTURE			
PROJECT NUMBER 1715 PPS (607861)	DESIGN ATD	DRAWN LU	DATE 10/06
REVISIONS	APPROVED ATD	SCALE Noted	SHEET 2 OF 6
Newman Apartments/SWS1		06-10-E669	