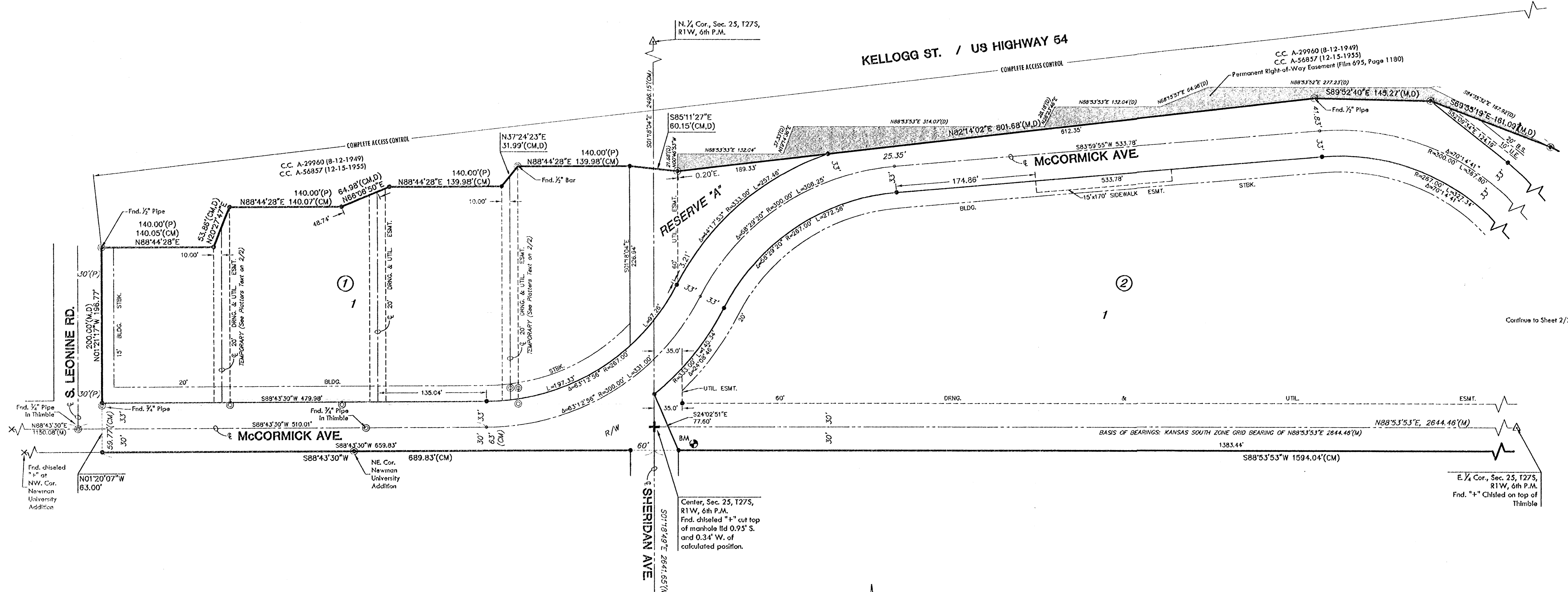


FINAL PLAT NEWMAN UNIVERSITY SECOND ADDITION AN ADDITION TO WICHITA, SEDGWICK COUNTY, KANSAS



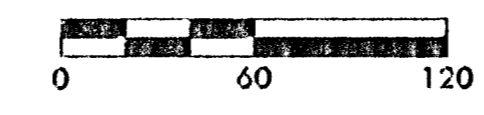
Continue to Sheet 2/2

LEGEND

- △ = Section Corner Monument Found
- ⊙ = Found 1/2" Rebar w/ Baughman Id cap
- = Found Survey Monument (see annotation for type)
- = Set 3/8" Rebar w/ MKEC CLS 39 Id. cap
- (M) = Measured
- (D) = Described
- (CM) = Calculated from measured
- ▨ = Street Dedication (width varies)

BENCH MARK

BM ⊙ COW Bench Mark - SE. corner of intersection Sheridan and McCormick lying 24' E. of centerline and 46.3' S. of centerline.
Elev. = 1299.76 (NGVD) 112.36 (City)



Seal of Sedgwick County, Kansas
 Register of Deeds - Big Mark
 DOC #/FLM-PG: 2872470/
 Sheet: 150/318
 Page Recorded: 2
 Recording Fee: \$40.00
 Date Recorded: 10/19/2005 12:51:44 PM

Gregory J. Allison
 8/15/05
 GREGORY J. ALLISON
 LICENSED
 L.S.-1257
 LAND SURVEYOR
 KANSAS

