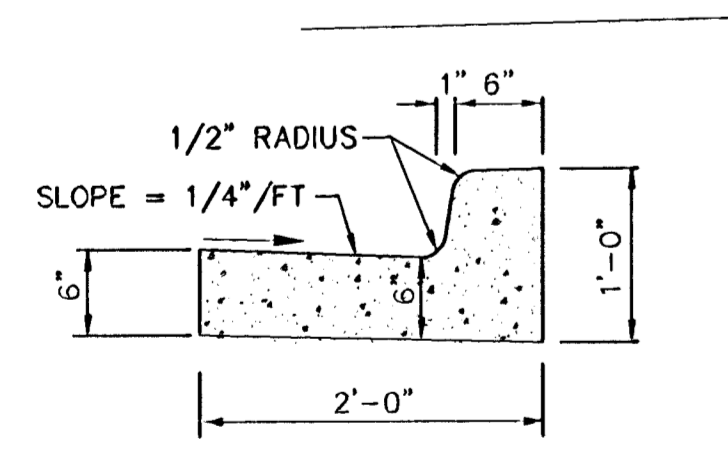
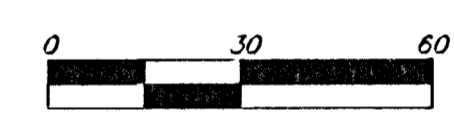
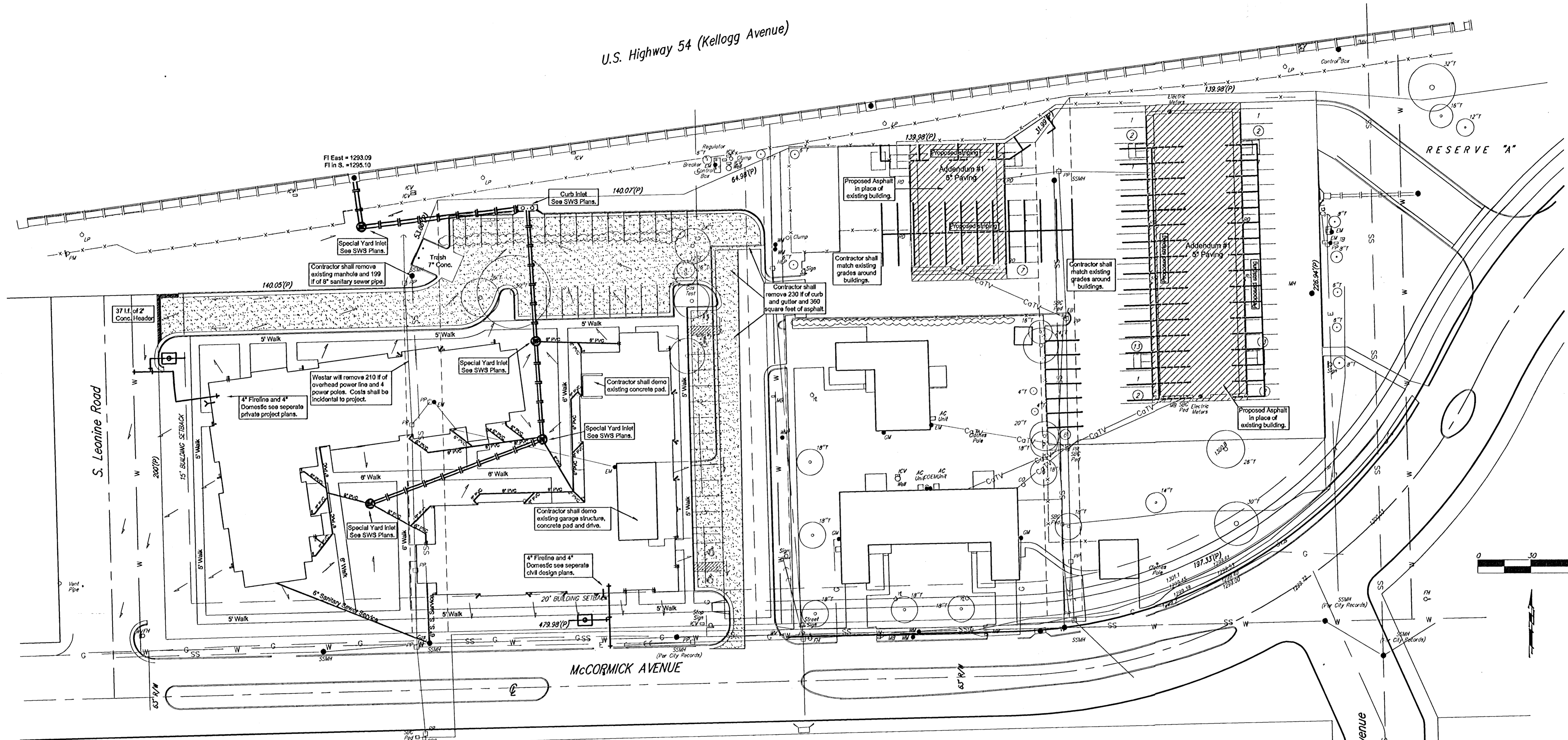
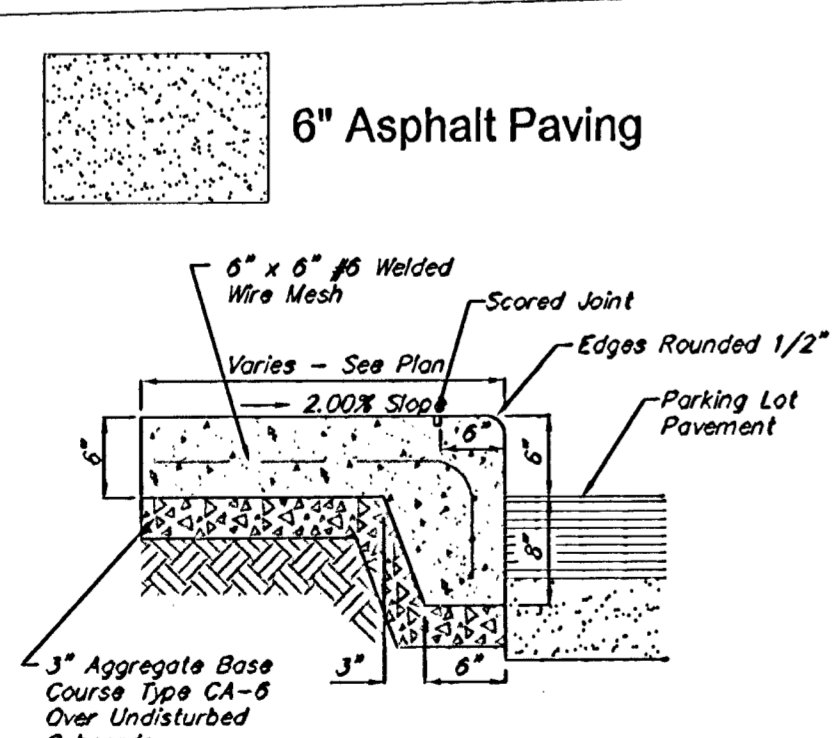


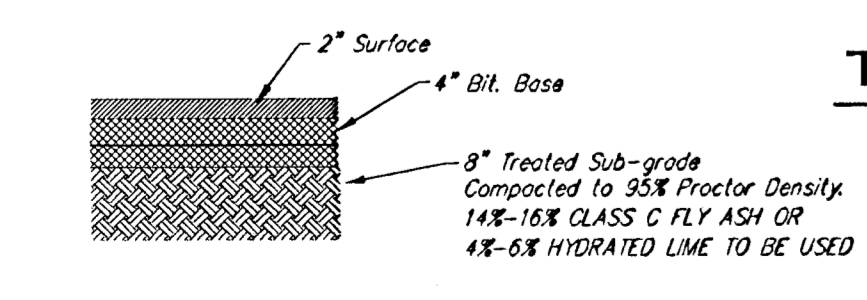
U.S. Highway 54 (Kellogg Avenue)



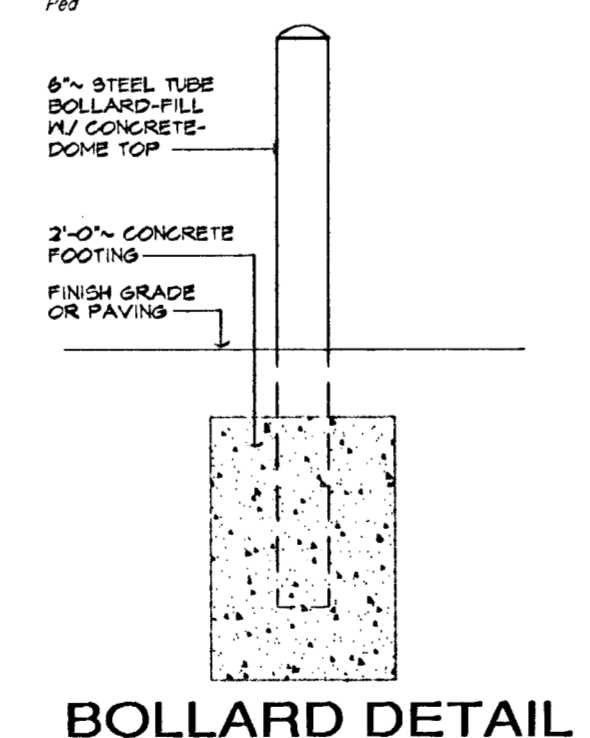
TYP. HIGH EDGE CURB AND GUTTER SECTION  
NOT TO SCALE



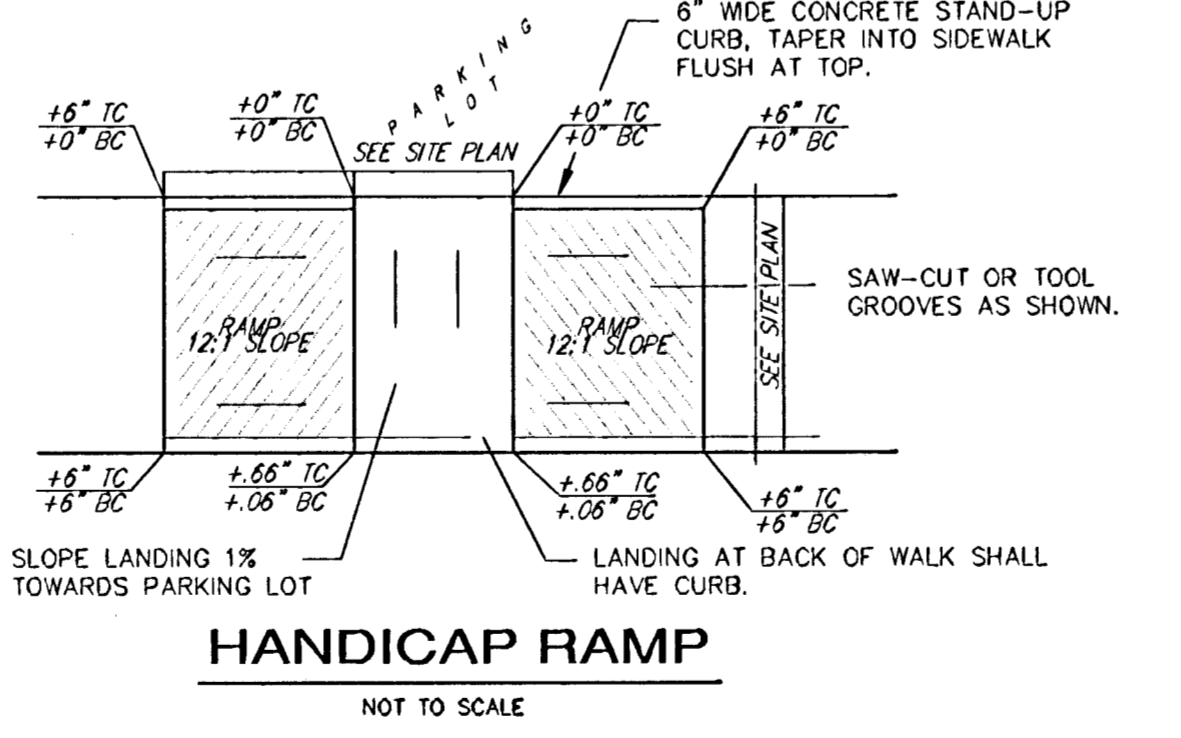
TYP. CURB-WALK SECTION  
NOT TO SCALE



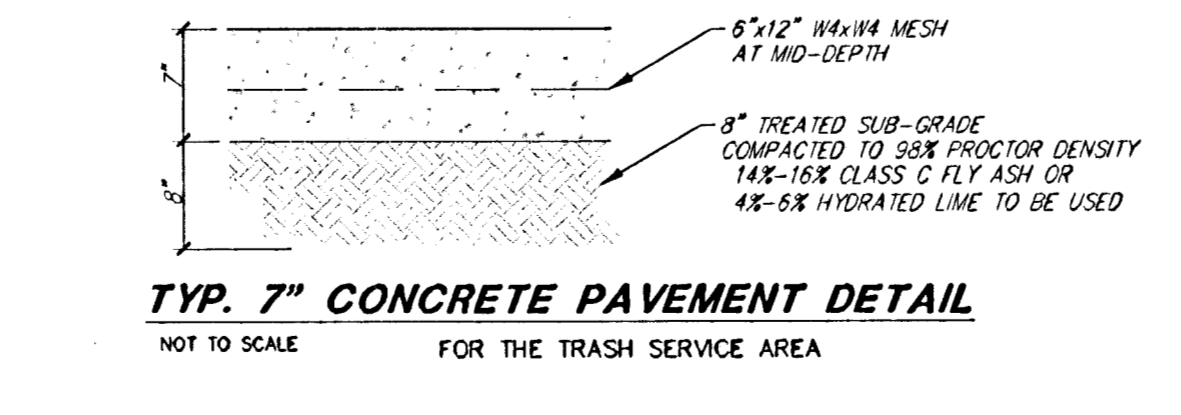
TYP. 6" ASPHALT PAVEMENT DETAIL  
NOT TO SCALE FOR ALL NEW PAVING UNLESS NOTED OTHERWISE



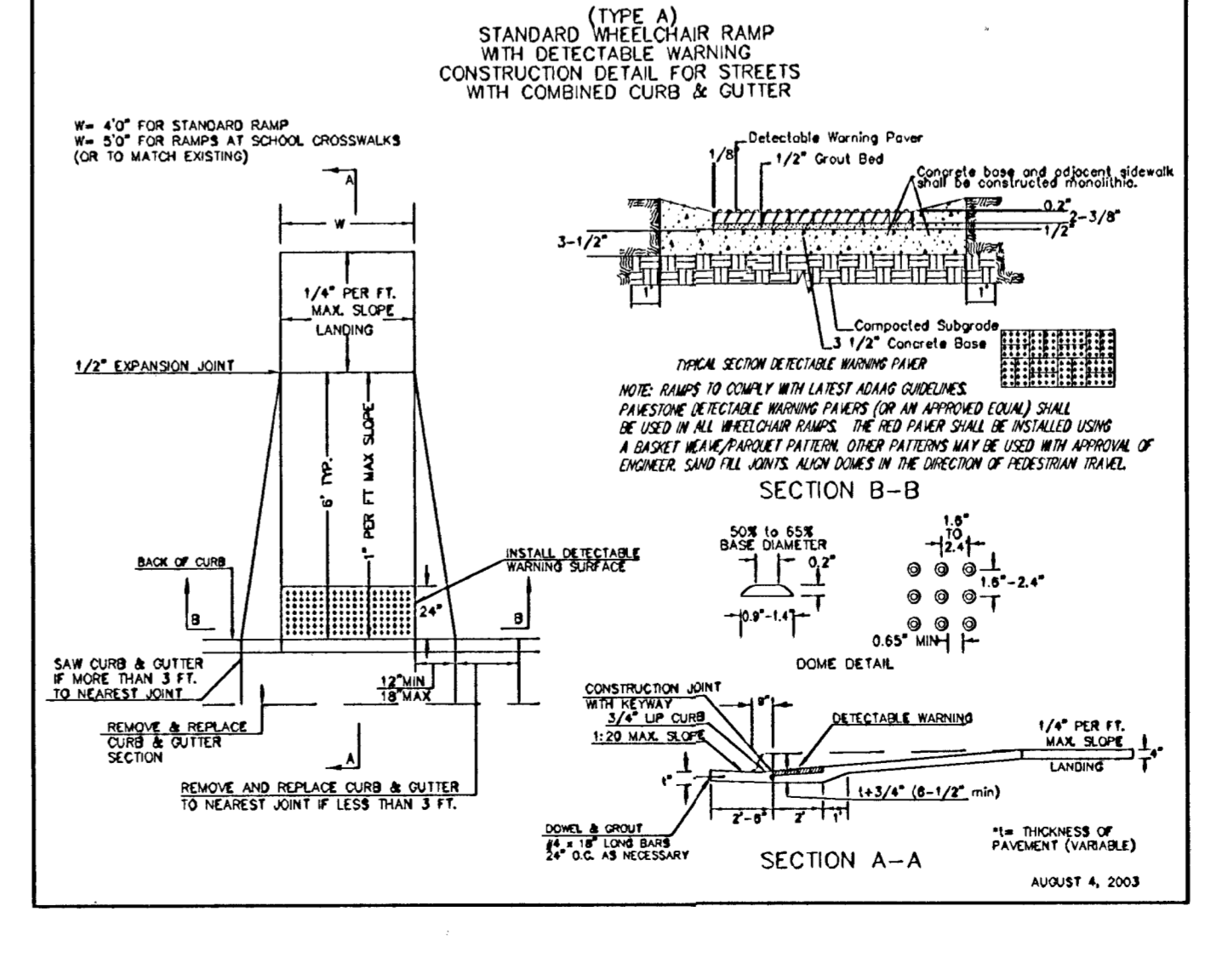
BOLLARD DETAIL  
NOT TO SCALE



HANDICAP RAMP  
NOT TO SCALE



TYP. 7" CONCRETE PAVEMENT DETAIL  
NOT TO SCALE FOR THE TRASH SERVICE AREA



Sheet 4 of 6

<b>Baughman</b>		<b>Site Plan</b>	
Baughman Company, P.A. 315 8th St. W., Suite 101, Wichita, KS 67202		Lot 1, Newman University 2nd	
ENGINEERING   SURVEYING   PLANNING   LANDSCAPE ARCHITECTURE		Wichita, Kansas	
REVISIONS	ATD	APPROVED	DRAWN
11/21/06			
Removal parking and parking along west side.		SCALE	
		1"=30'	
		DATE	
		October 30, 2006	