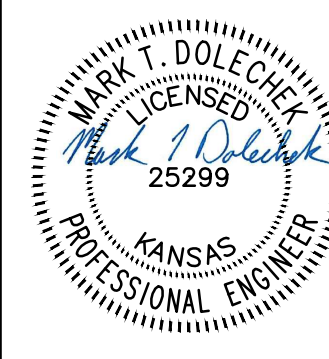
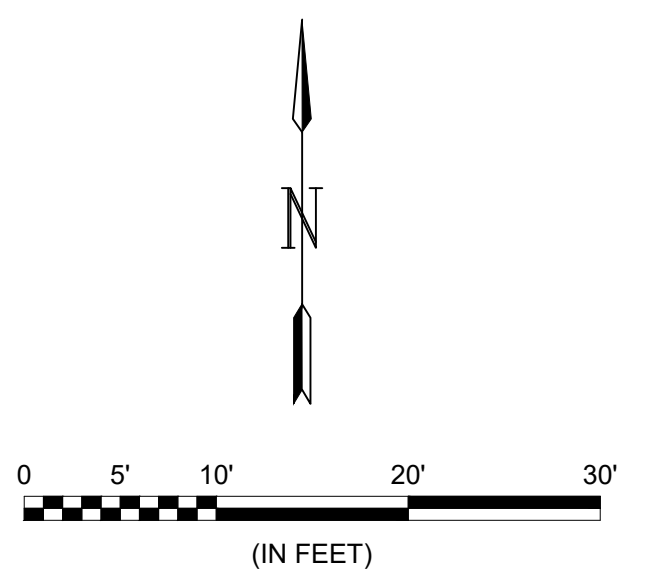
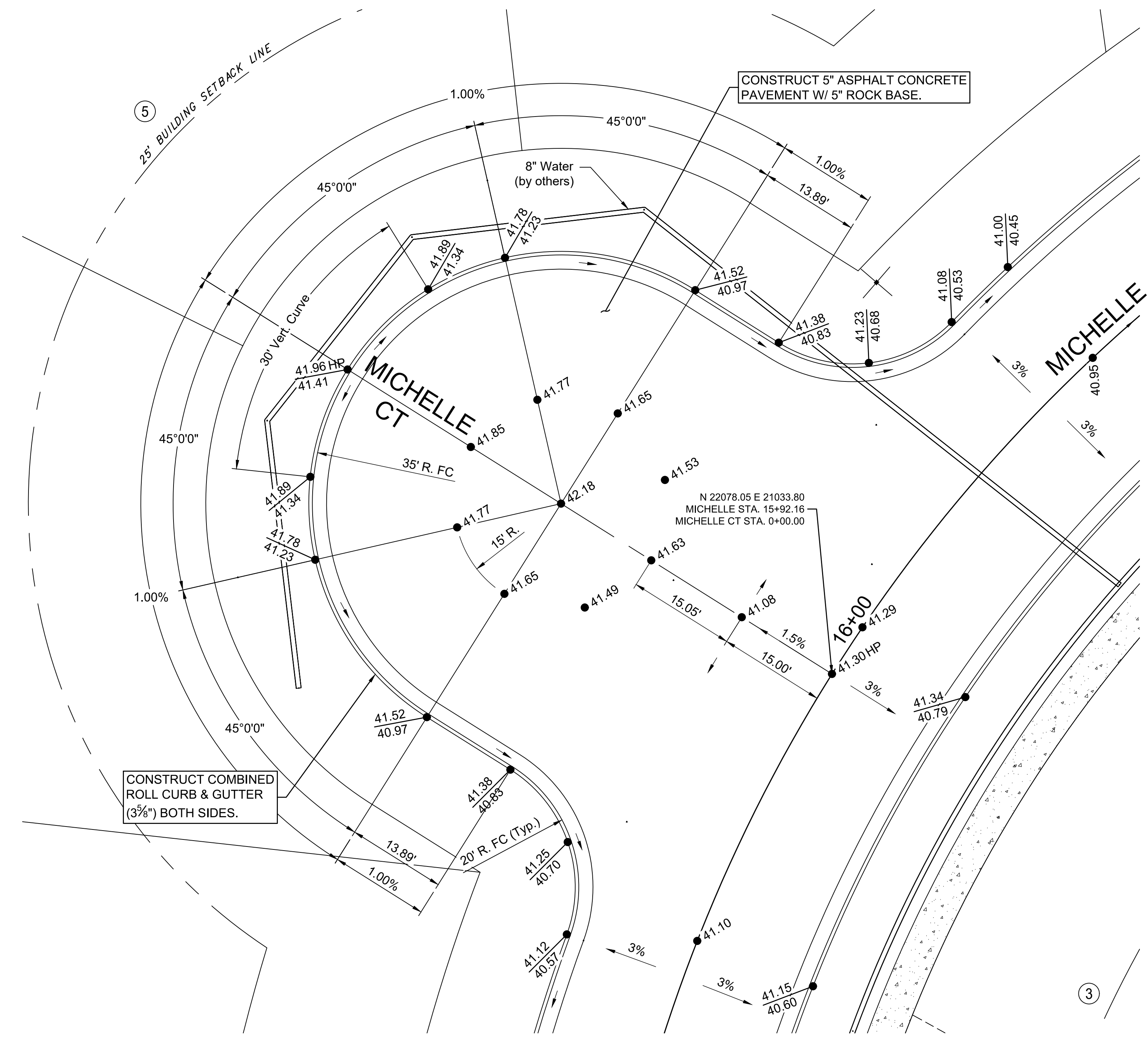




© 2018 GARVER, LLC
 THIS DOCUMENT, ALONG WITH THE IDEAS AND DESIGNS CONVEYED HEREIN, SHALL BE CONSIDERED INSTRUMENTS OF PROFESSIONAL SERVICE AND ARE PROPERTY OF GARVER, LLC. ANY USE, REPRODUCTION, OR DISTRIBUTION OF THIS DOCUMENT, ALONG WITH THE IDEAS AND DESIGN CONTAINED HEREIN, IS PROHIBITED UNLESS AUTHORIZED IN WRITING BY GARVER, LLC OR EXPLICITLY ALLOWED IN THE GOVERNING PROFESSIONAL SERVICES AGREEMENT FOR THIS WORK.



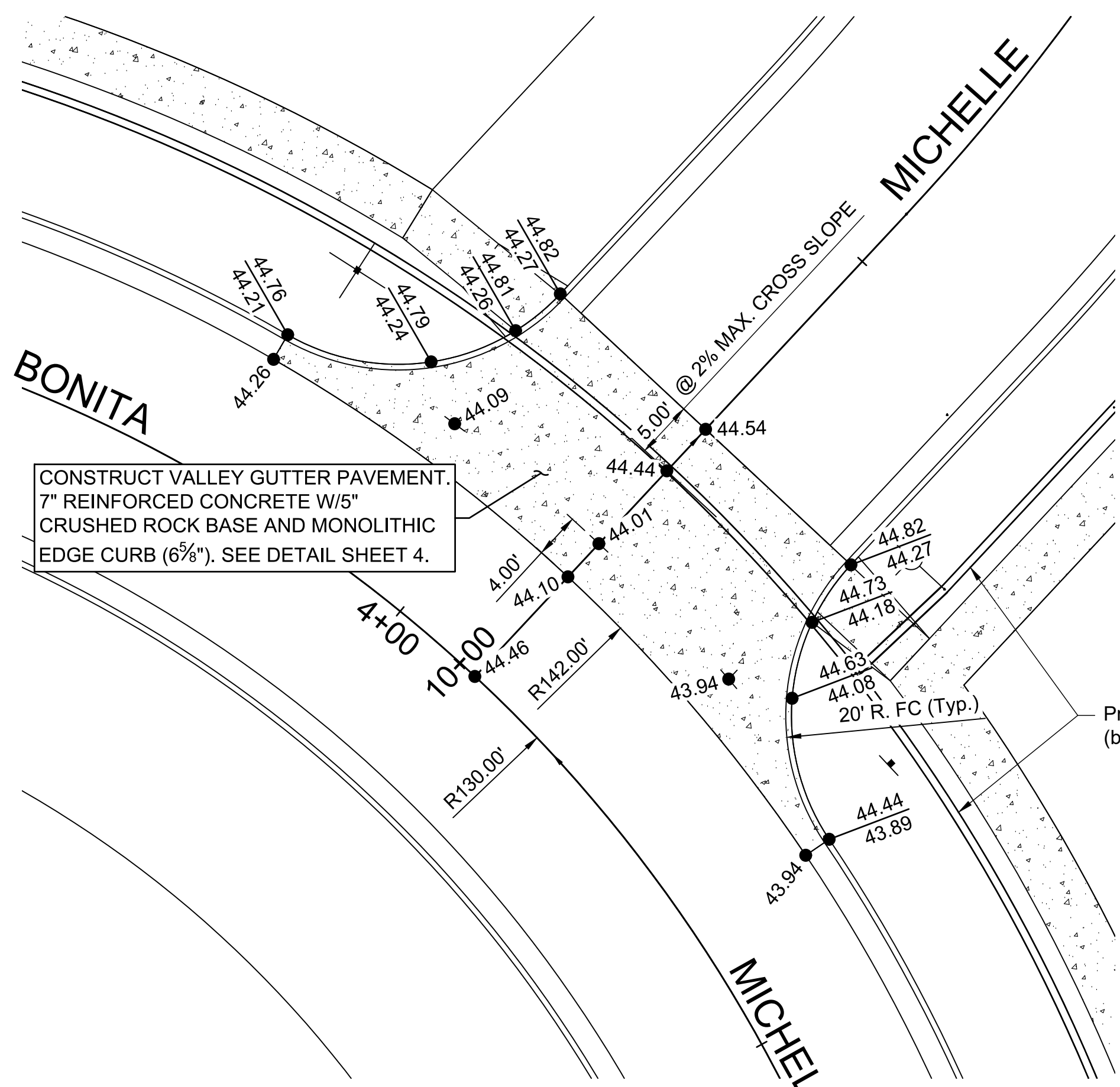
Digitally Signed 10/31/2018



- NOTES:
- Elevations shown are abbreviated. Add 1300 to the displayed elevation to obtain the true elevation.
 - The displayed top of curb elevation is the top of full curb (6 5/8"). Roll curb (3 5/8") shall be constructed except for Valley Gutters.
 - Contractor to grade Right-of-Way according to Grading Detail on Sheet No. 9.

MICHELLE COURT

- Left Cross Slope of Michelle to transition from 3% to 1.5% from Sta. 5+44.57 to Sta. 5+92.16 and then transition back to 3% by Sta. 6+39.74
- Right Cross Slope to match typical section (3%)



VALLEY GUTTER DETAIL

File: L:\2018\18267011 - Casa Bella Phase 5\Drawings\C3D\Paving\Intersection Details.dwg Last Save: 9/11/2018 8:52 AM Last saved by: DRStandrich
 Last plotted by: Dolechek, Mark T. Plot Style: --- Plot Scale: 1:2,564.9 Plot Date: 10/31/2018 11:27 AM Plotter used: None

REV.	DATE	DESCRIPTION	BY



CITY OF WICHITA
 WICHITA, KANSAS
 CASA BELLA 2nd ADD.
 PHASE 5 - PAVING

Intersection Details

JOB NO.: 18267011
 DATE: SEPT. 2018
 DESIGNED BY: MTD
 DRAWN BY: DRS

BAR IS ONE INCH ON ORIGINAL DRAWING
 IF NOT ONE INCH ON THIS SHEET, ADJUST SCALES ACCORDINGLY.

DRAWING NUMBER