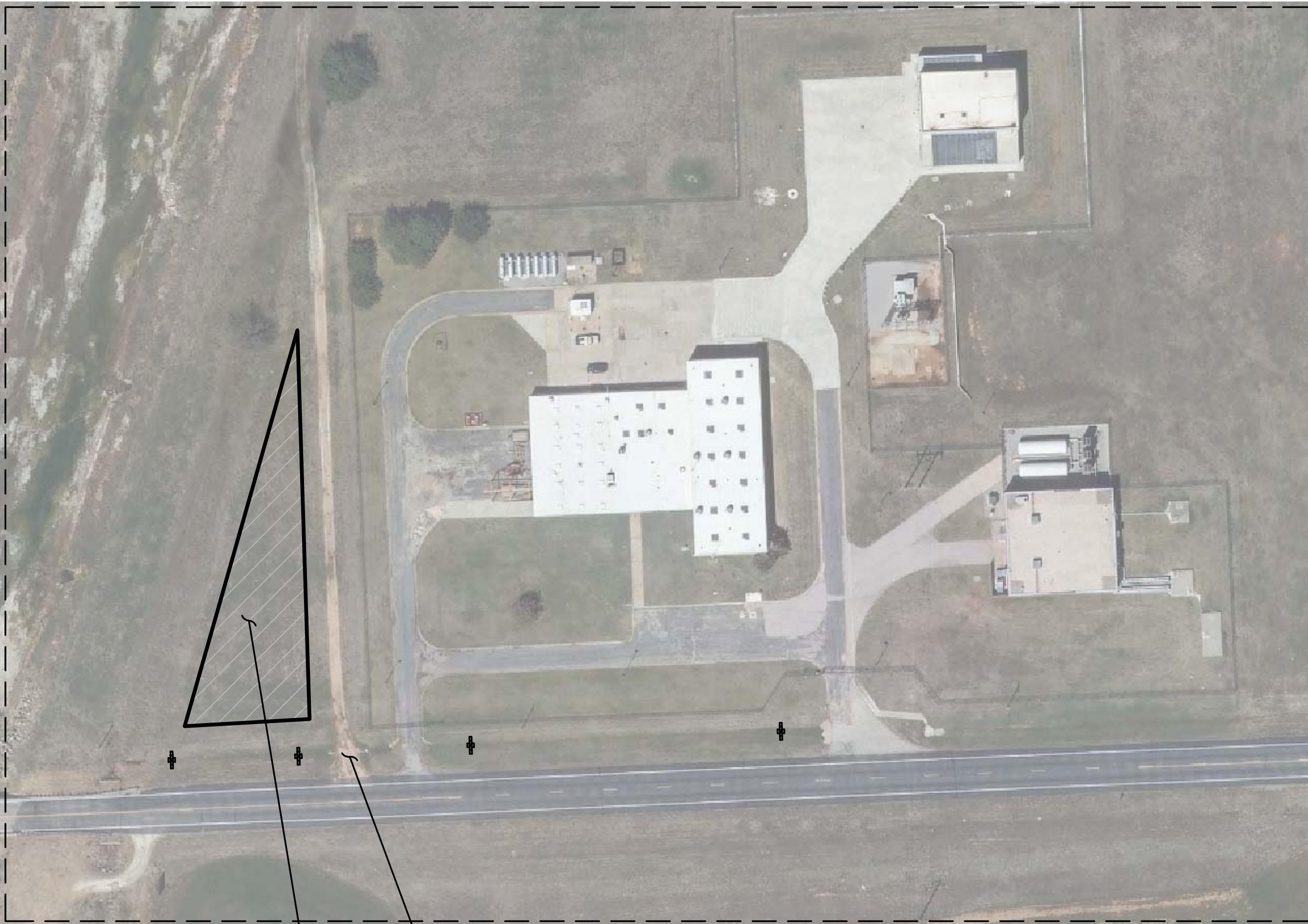


PLOTTED: Tuesday, November 06, 2018 @ 08:12PM

J:\PROJECTS\2018\1601010411_COW_ONCALLSERVICES_160411 CAD CHENEY PUMP STATION\SHOTS\05 CIVIL\PAV\16411_LAYDOWN AREA.DWG

EXCESS SOIL (CLEAN OF DEBRIS), SUBGRADE/BASE ROCK, AND DEMOLISHED CONCRETE CAN BE STOCKPILED AT THIS LOCATION - EXACT LOCATION SHALL BE COORDINATED WITH THE CITY OF WICHITA PUMP STATION SUPERINTENDENT PRIOR TO THE START OF CONSTRUCTION

FIELD ROAD SHALL BE RESTORED AT THE END OF THE PROJECT (IF NECESSARY PAID FOR AS "SITE RESTORATION")



INSET 1

CONTRACTOR WILL BE RESPONSIBLE FOR MAINTAINING THE CONDITION OF THE FIELD ROAD ENTRANCE. ADDITIONAL ROCK/GRAVEL MAY BE NECESSARY IN WEATHER CONDITIONS. COST OF MAINTENANCE SHALL BE INCIDENTAL TO THE PROJECT.

THE HATCHED ARE CAN BE USED FOR PROJECT STAGING/LAYDOWN. THE PERIMETER SHALL HAVE A GRASS BUFFER AROUND IT AT ALL TIMES.

EROSION CONTROL/SEEDING NOTES

1. THE LAYDOWN/STAGING AREA AND ANY DISTURBED AREAS BEHIND THE BACK OF CURBS/ADJACENT TO PAVEMENT SHALL BE SEEDED WITH BUFFALO GRASS AND MULCHED AT THE END OF THE PROJECT. CITY OF WICHITA STANDARD SPECIFICATIONS AND SPECIAL PROVISIONS SECTION 902 SHALL GOVERN.
2. SEEDING AREAS SHALL BE PREPARED FOR PLANTING WITH COMMON AGRICULTURAL TECHNIQUES. APPROVE WITH OWNER'S REPRESENTATIVE BEFORE PLANTING.
3. ALL SEED SHALL BE DISTRIBUTED WITH AN ACCEPTABLE DRILL INTENDED FOR SUCH OPERATIONS, OR OTHER EQUIPMENT APPROVED BY THE OWNER'S REPRESENTATIVE. SEEDING DEPTH SHALL BE 1/4 OF AN INCH.
4. ALL SEEDED AREAS SHALL BE IMMEDIATELY MULCHED WITH PRAIRIE HAY AT 2 TONS/ACRE. ANCHOR MULCH BY CRIMPING INTO TOPSOIL WITH SUITABLE MECHANICAL EQUIPMENT.
5. CONTRACTOR IS RESPONSIBLE FOR MAINTAINING AND IMPLEMENTING ALL EROSION CONTROL.
6. ANY MUD TRACKED ONTO ADJACENT PAVED AREAS OR STREETS SHALL BE REMOVED AT THE END OF EACH WORK DAY.

LEGEND

12" STRAW WAFFLE DITCH CHECK (4)

ERIC MEYER: PUMP STATION SUPERINTENDENT
OFFICE PHONE: 316-540-3574

PAVING & INCIDENTAL DRAINAGE FOR
CHENEY PUMP STATION
PAVEMENT REPLACEMENT & REPAIR

©2018 MKEC Engineering All Rights Reserved www.mkec.com
These drawings and their contents, including, but not limited to, all concepts, designs, & ideas are the exclusive property of MKEC Engineering (MKEC), and may not be used or reproduced in any way without the express consent of MKEC.

LAYDOWN & STAGING AREAS

PROJECT NO.	448-90934	
DATE	NOV. 2018	
SCALE	AS SHOWN	
DESIGNED	DRAWN	CHECKED
SLF	SLF	JRA
NO.	REVISION	DATE