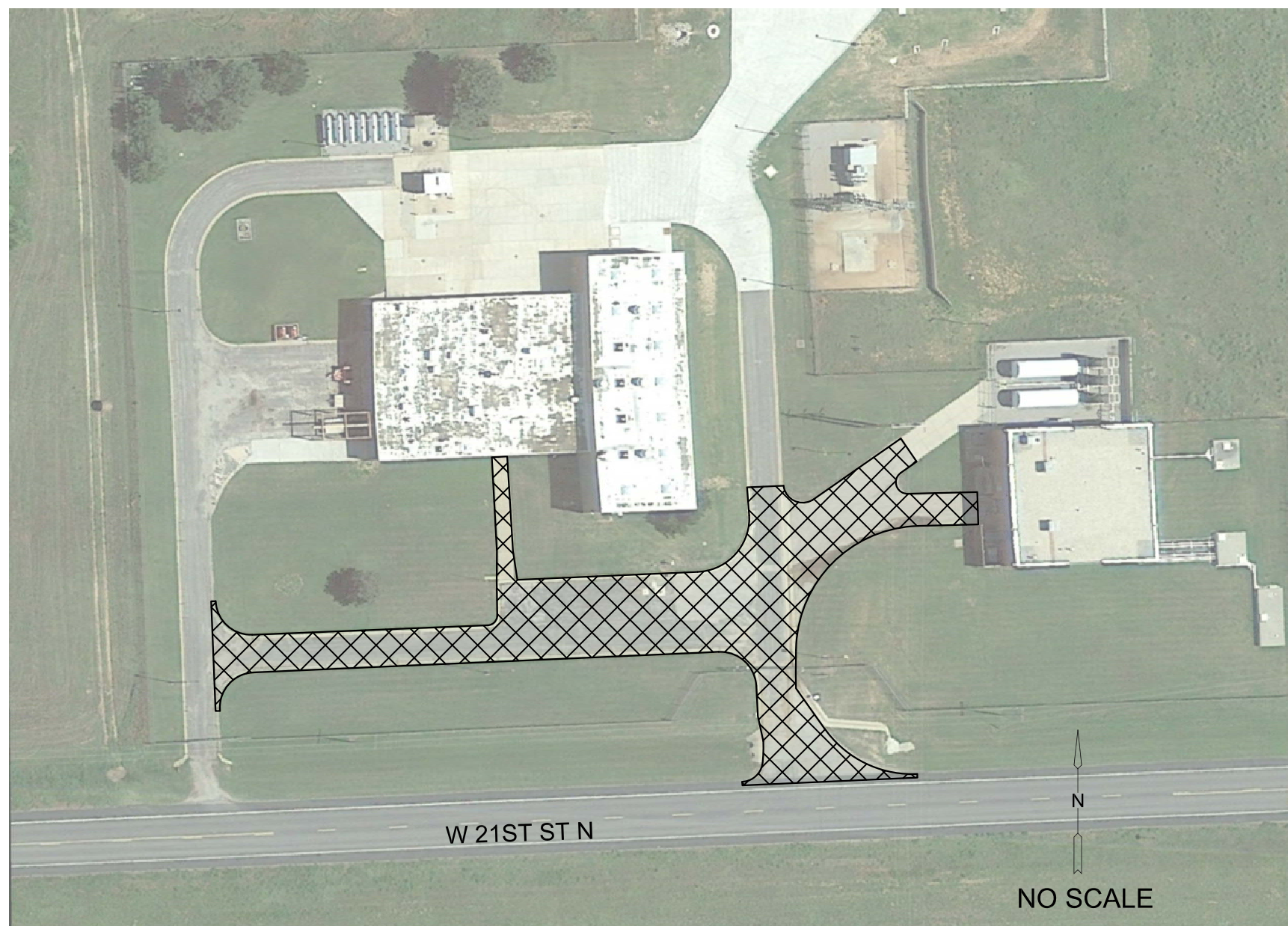


PLOTED: Tuesday, November 06, 2018 @ 08:12PM

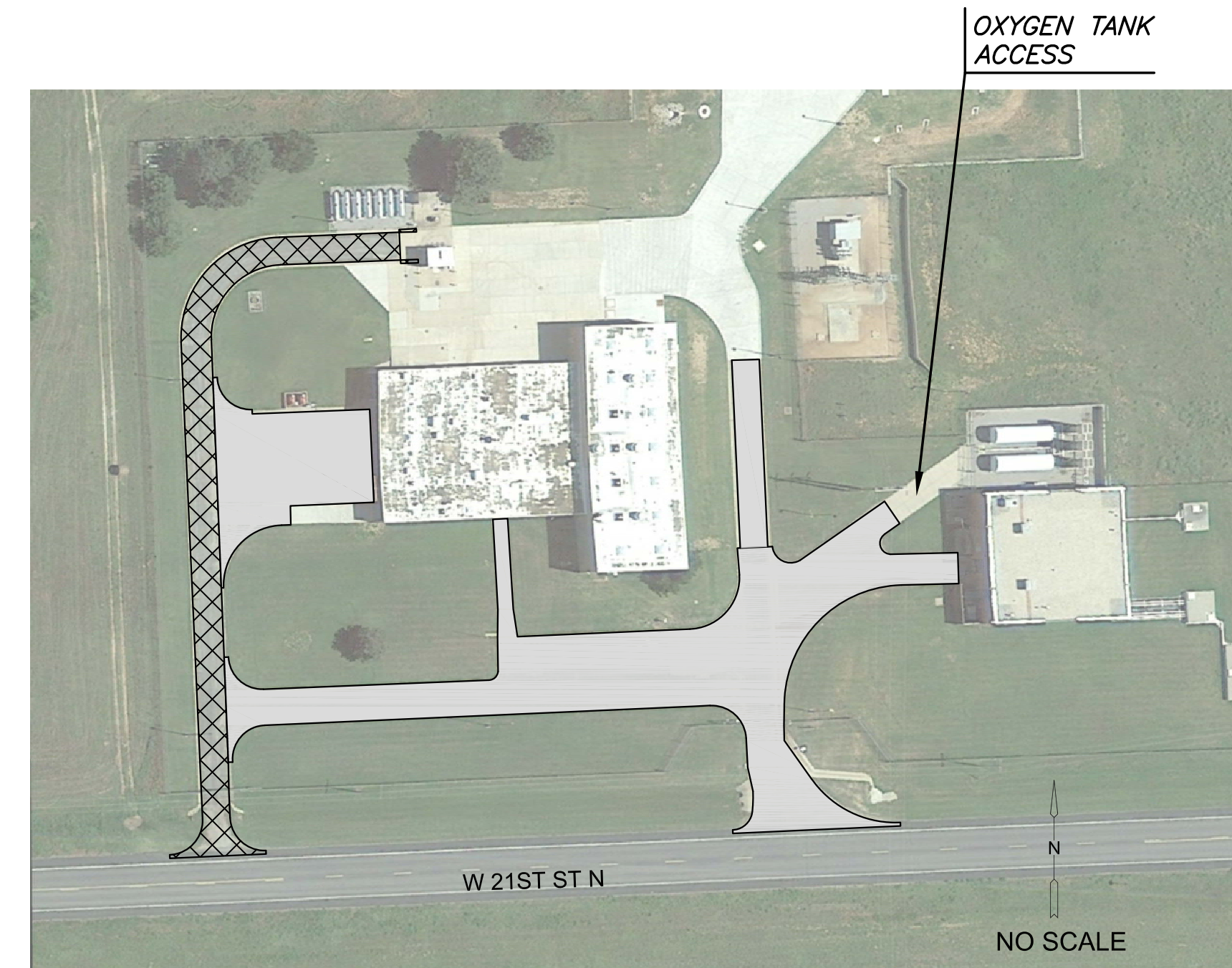
J:\PROJECTS\2018\1601010411\_COW\_ONCALLSERVICES\_160411\_CAD\_CHENEY PUMP STATION\SHOTS\05\_CIVIL\PAV\16411\_EPHASING.DWG



PHASE 1 CONSTRUCTION PLAN



PHASE 2 CONSTRUCTION PLAN



PHASE 3 CONSTRUCTION PLAN

All signs and pavement markings conflicting with construction traffic control shall be covered or removed as directed by the Engineer.

Access must be maintained to the maintenance shop area and the oxygen tanks to allow for the weekly delivery of oxygen. As the various construction activities progress, certain situations may arise that will preclude adhering to the original construction sequence or which, in the opinion of the Contractor, would readily adapt themselves to a more efficient phasing operation. Should this occur, the Contractor may submit to the Engineer an alternative plan for approval.

Contractor shall maintain existing drainage system during construction and address local drainage issues as necessary during construction. Temporary drainage measures will be subsidiary to other items in the contract. Contractor shall provide for drainage in sump areas opened to traffic. Ponded stormwater in sump areas will not be allowed.

Maintain access to all properties within the project limits at all times.

All traffic control signs and devices shall be in conformance with the latest edition of the Manual on Uniform Traffic Control Devices.

PHASING	HANDLING OF TRAFFIC	MAJOR CONSTRUCTION ITEMS	REMARKS
1	Provided a 3' shift off traffic to utilize the 4' shoulders of W 21st St N. Maintain single lane of traffic in each direction on W 21st St. N.	Construct the planned improvements on the east approach slab off of W 21st St N., the east/west facility road & parking lot area, and the "Y" east of the existing 5' concrete valley gutter. The planned sidewalk and ADA stall striping improvements will also be included in this phase.	Refer to the Traffic Control Plan (East) sheet for this phase of the project. Phase 1 concrete improvements must be out of cure and back in use before any of Phase 3 can begin.
2	Offsite traffic should not be impacted by this phase of the project.	Construct the west receiving bay area improvements and the remaining portion for the north/south road.	Phase 1 concrete improvements must be out of cure and back in use.
3	Provided a 3' shift off traffic to utilize the 4' shoulders of W 21st St N. Maintain single lane of traffic in each direction on W 21st St. N.	Continue construction of the south half of improvements on 21st Street and construct the west half of improvements on Oliver. Construct the southeast quadrant of the 21st and Oliver intersection.	Refer to the Traffic Control Plan (West) sheet for this phase of the project. Phase 1 concrete improvements must be out of cure and back in use before any of Phase 3 can begin.

**LEGEND**

- Under Construction This Phase
- Construction Completed

©2018  
 MKEC Engineering  
 All Rights Reserved  
 www.mkec.com  
 These drawings and their contents, including, but not limited to, all concepts, designs, & ideas are the exclusive property of MKEC Engineering (MKEC), and may not be used or reproduced in any way without the express consent of MKEC.

**CONSTRUCTION SEQUENCING**

PROJECT NO.	448-90934	
DATE	NOV. 2018	
SCALE	NTS	
DESIGNED	DRAWN	CHECKED
SLF	BKS	SLF

NO.	REVISION	DATE
-----	----------	------

SHEET NO.  
3 OF 22