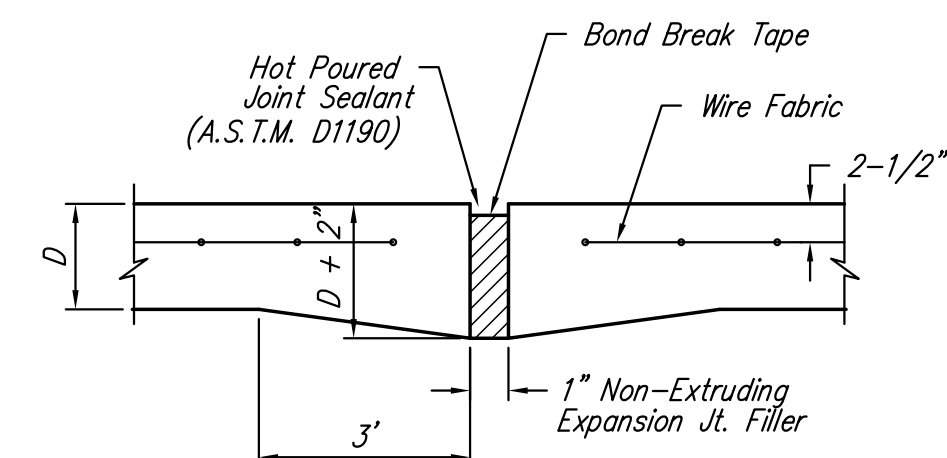


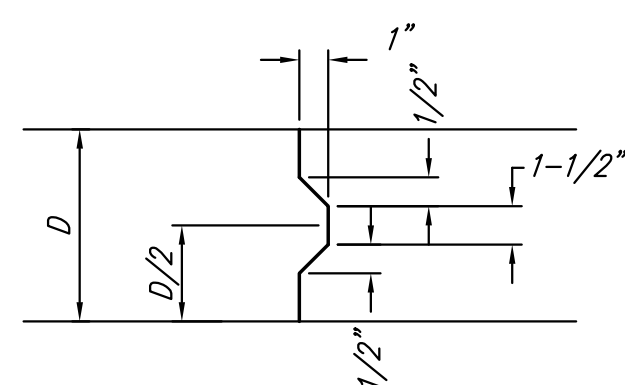
PLOTTED: Tuesday, November 06, 2018 @ 08:10PM

J:\PROJECTS\2018\1601010411_COW_ONCALLSERVICES_160411 CAD CHENEY PUMP STATIONS\SHOTS\CIVIL\PAV\16411_VALVYGUT.DWG

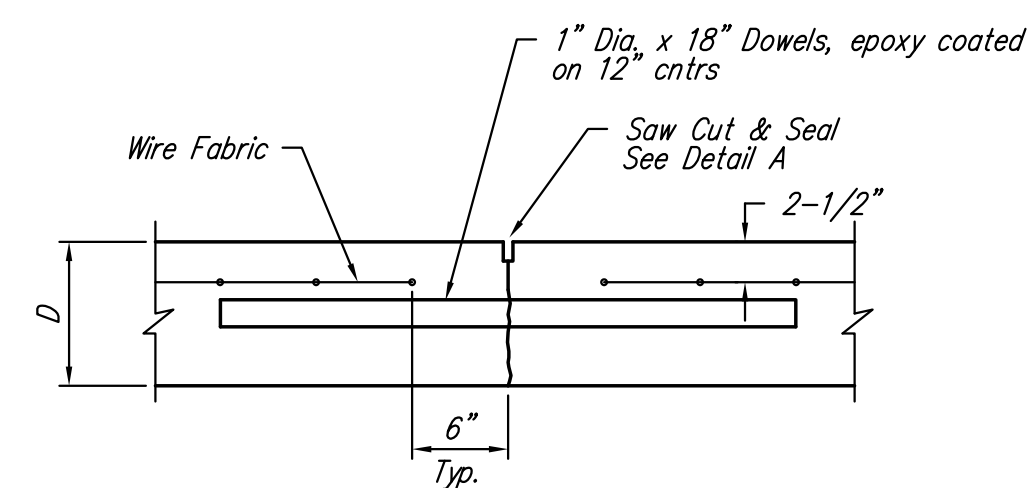


EXPANSION JOINT

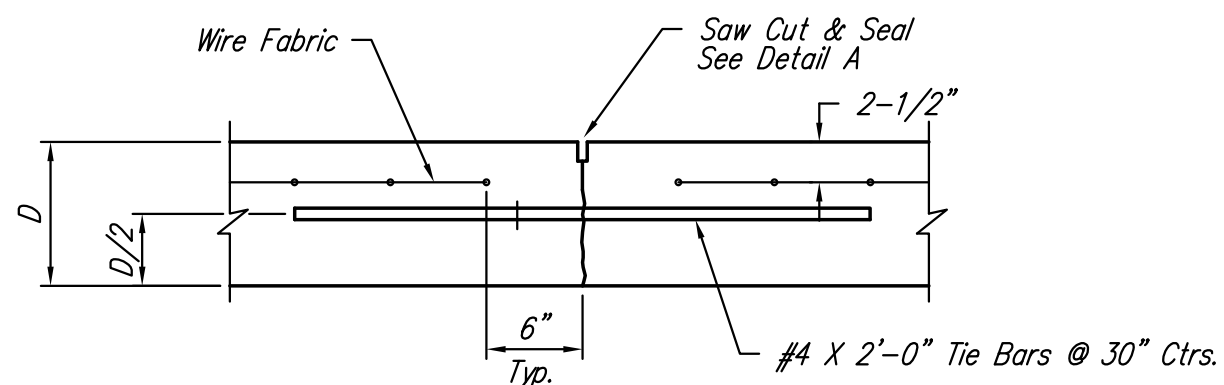
NOTE: Extra Thickness to be Subsidiary to Price of Square Yards Pavement



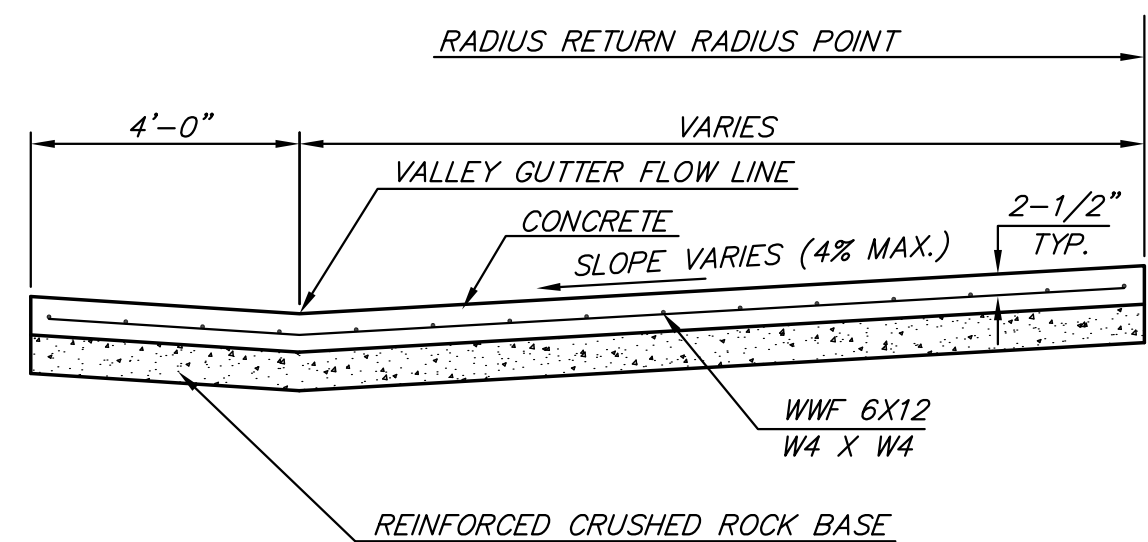
KEYWAY DETAIL



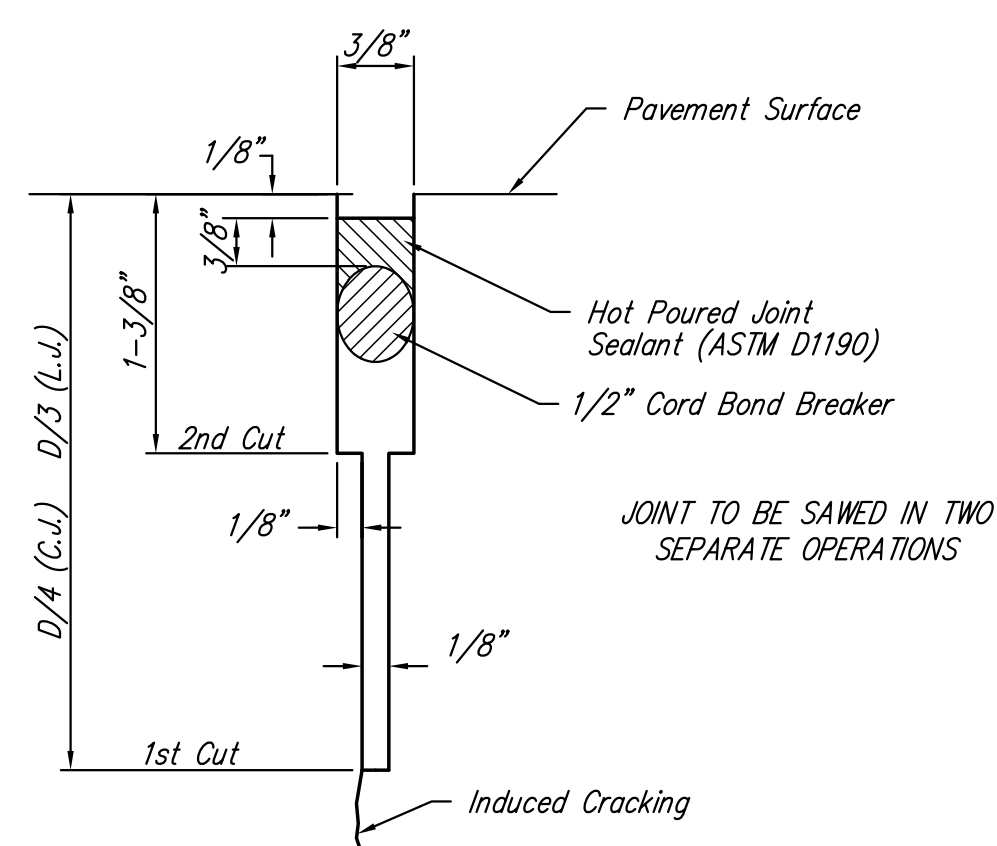
CONTRACTION JOINT DETAIL (C.J.)



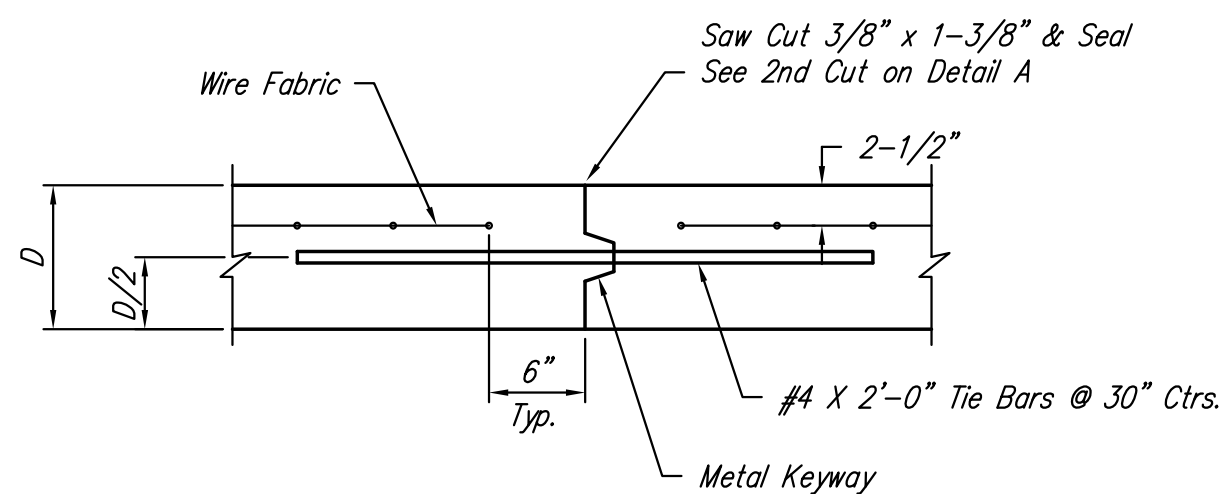
LONGITUDINAL JOINT DETAIL (L.J.)



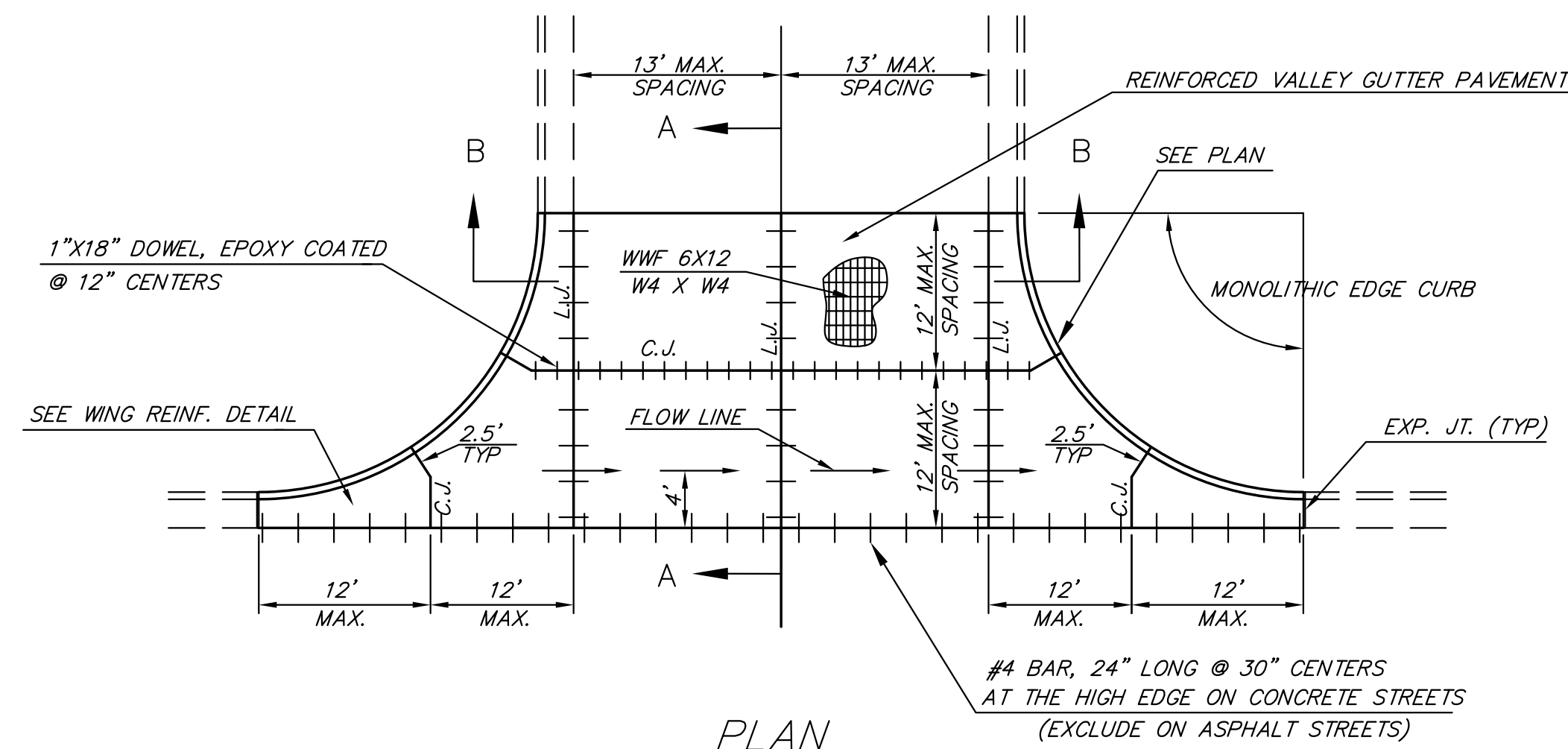
SECTION A-A



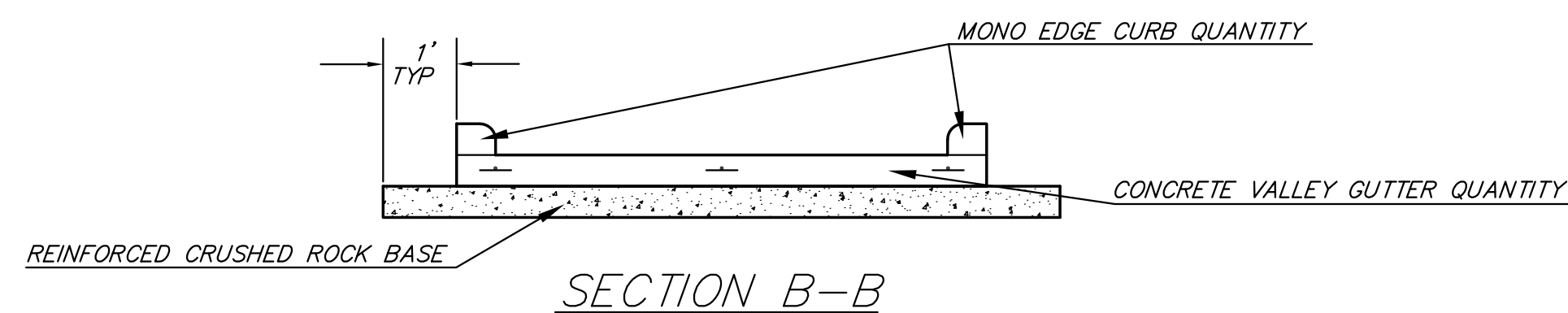
SAW JOINT DETAIL (DETAIL A)



OPTIONAL LONGITUDINAL JOINT DETAIL (L.J.)

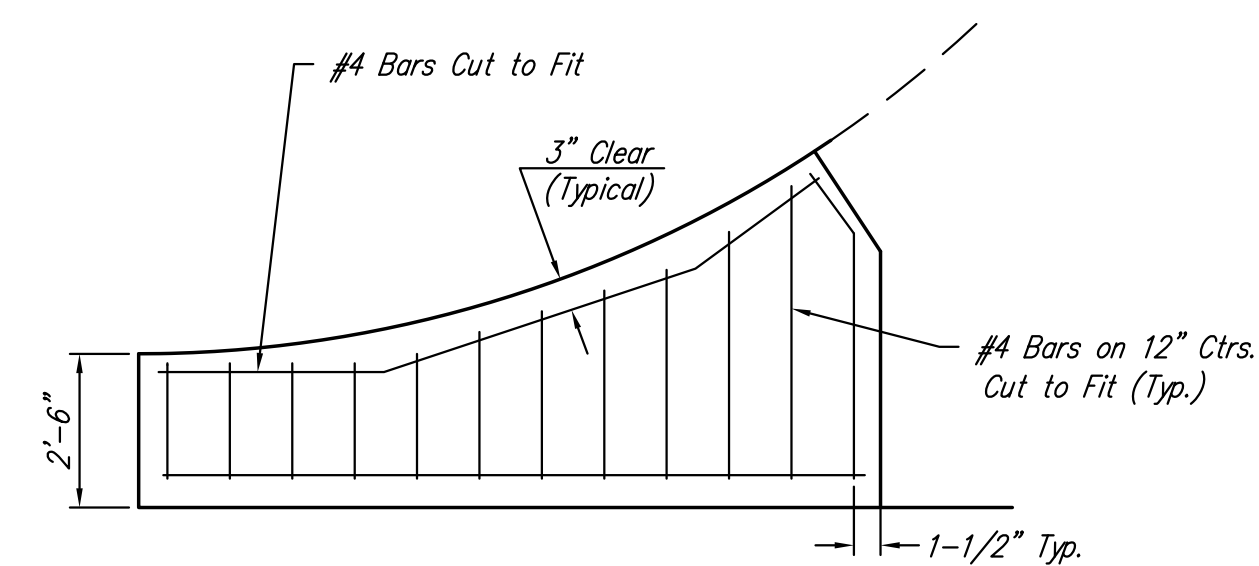


PLAN



REINFORCED VALLEY GUTTER (DOWELED) DETAIL

WELDED WIRE FABRIC (AND BARS) SHALL BE SUPPORTED BY BAR CHAIRS PER SECTION 406 OF THE CITY OF WICHITA STANDARD SPECIFICATIONS.



WING REINFORCING DETAIL

©2018 MKEC Engineering All Rights Reserved www.mkec.com
These drawings and their contents, including, but not limited to, all concepts, designs, & ideas are the exclusive property of MKEC Engineering (MKEC), and may not be used or reproduced in any way without the express consent of MKEC.

VALLEY GUTTER DETAIL

PROJECT NO.	448-90934	
DATE	NOV. 2018	
SCALE	NTS	
DESIGNED	DRAWN	CHECKED
SLF	SLF	CRM

NO.	REVISION	DATE

SHEET NO.